



* 0 0 B R E A K 0 0 *



**ADVANCED
IMAGING
SYSTEMS**

www.aisimc.com

An Information
Management Company

City of Charlotte – Planning Dept. Scanning Rezoning Files

Petition # _____

Document type:

- Applications
- Correspondence
- Department Comments
- Land Use Consistency
 - Mail Info
 - Mapping
 - Other
- Site Plans



* 0 0 B R E A K 0 0 *

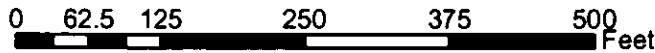
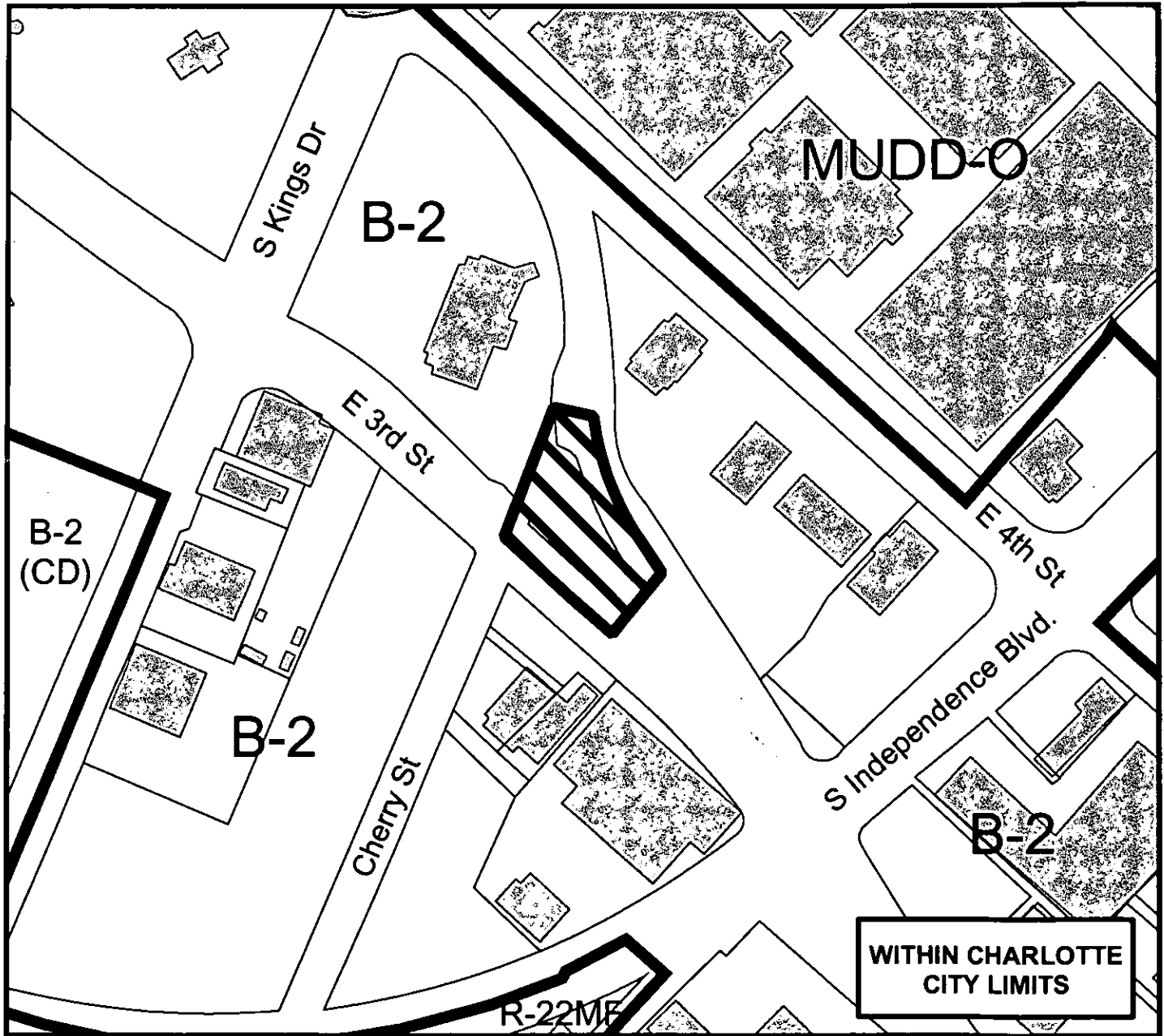
Petition #: **2004-127**

Petitioner: Marc H. Silverman & Lorin Silverman Stiefel

Zoning Classification (Existing): B-2
(General Business)

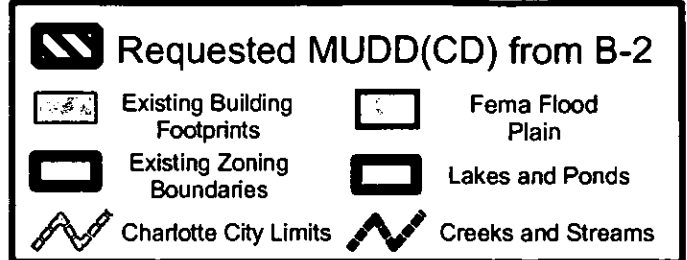
Zoning Classification (Requested): MUDD(CD)
(Mixed-Use Development District, Conditional)

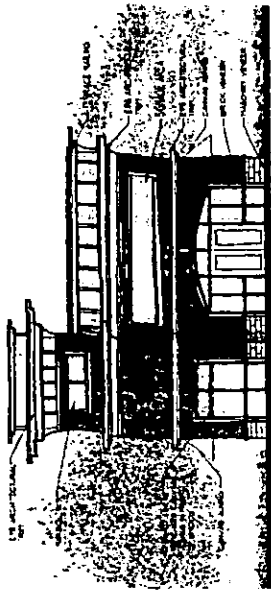
Acreage & Location : Approximately .24 acres located on the northwest corner of the intersection of East 3rd Street and the 3rd/4th Street Connector



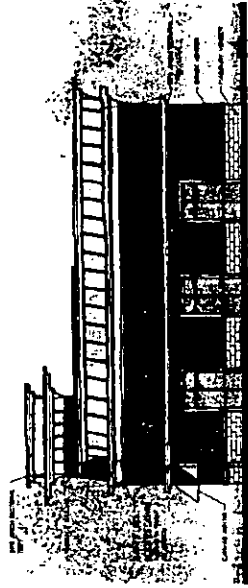
Zoning Map #(s) **102**

Map Produced by the
Charlotte-Mecklenburg Planning Commission
08-25-2004

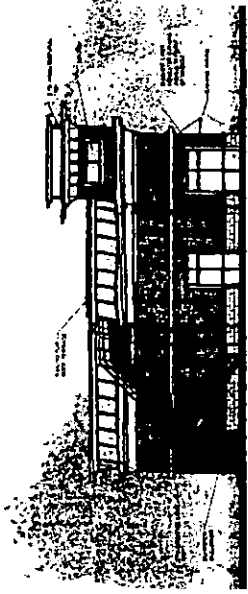




SCHEME 1 ELEVATION A

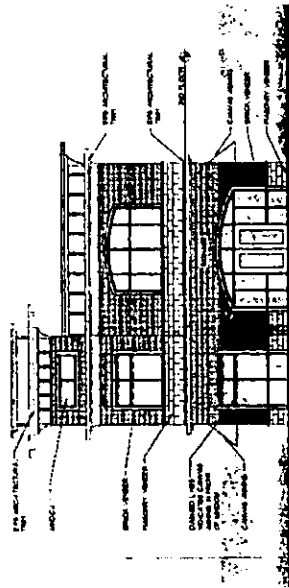


SCHEME 1 ELEVATION B

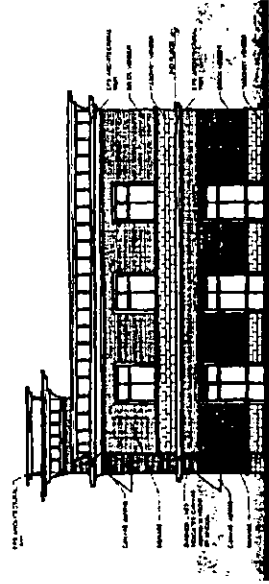


SCHEME 1 ELEVATION C

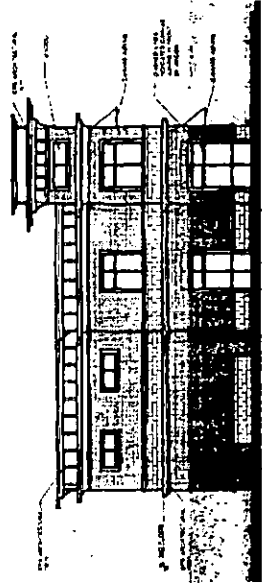
① SCHEME 1 - 1 STORY BUILDING WITH ROOFTOP TERRACE



SCHEME 2 ELEVATION A



SCHEME 2 ELEVATION B



SCHEME 2 ELEVATION C

② SCHEME 2 - 2 STORY BUILDING