

Mc² ENGINEERING

Mc² ENGINEERING, INC.
8624 LAUREL RUN DRIVE
CHARLOTTE, NC 28269
PHONE 704.363.7375

WALDEN PONDS SUBDIVISION
DEVELOPED BY:
RR MANAGEMENT COMPANY, LLC
1220 SOUTH KING DRIVE
CHARLOTTE, NC 28207
P: 704.372.4821
F: 704.372.5631

SCHEMATIC SITE PLAN

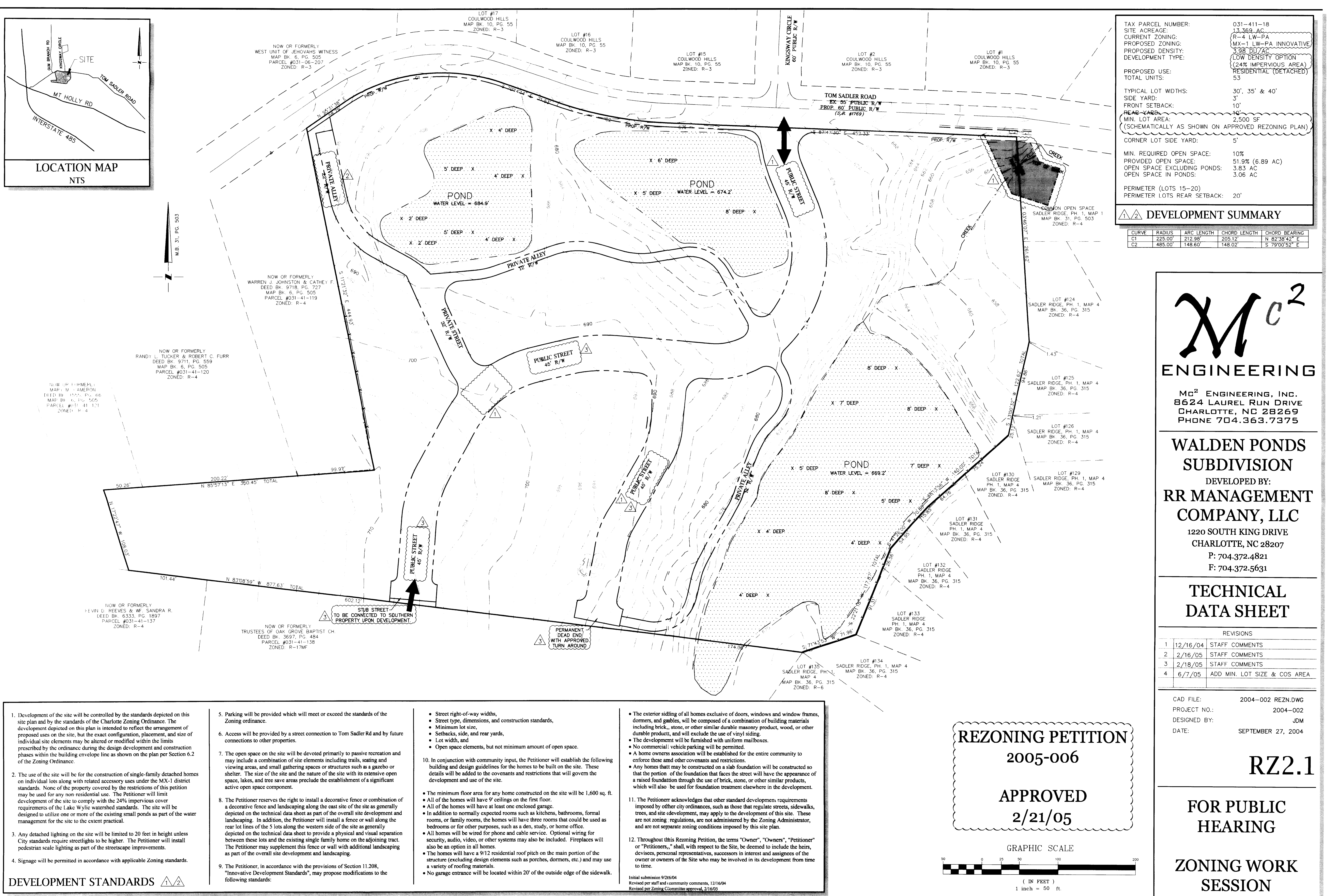
REVISIONS

1	12/16/04	STAFF COMMENTS
2	2/16/05	STAFF COMMENTS
3	2/18/05	STAFF COMMENTS
4	6/7/05	ADD MIN. LOT SIZE & COS AREA

CAD FILE: 2004-002 REZN.DWG
PROJECT NO.: 2004-002
DESIGNED BY: JDM
DATE: SEPTEMBER 27, 2004

RZ2.0

FOR PUBLIC HEARING
ZONING WORK SESSION



Mc² ENGINEERING

Mc² ENGINEERING, INC.
8624 LAUREL RUN DRIVE
CHARLOTTE, NC 28269
PHONE 704.363.7375

WALDEN PONDS SUBDIVISION
DEVELOPED BY:
RR MANAGEMENT COMPANY, LLC
1220 SOUTH KING DRIVE
CHARLOTTE, NC 28207
P: 704.372.4821
F: 704.372.5631

TECHNICAL DATA SHEET

REVISIONS

1	12/16/04	STAFF COMMENTS
2	2/16/05	STAFF COMMENTS
3	2/18/05	STAFF COMMENTS
4	6/7/05	ADD MIN. LOT SIZE & COS AREA

CAD FILE: 2004-002 REZN.DWG
PROJECT NO.: 2004-002
DESIGNED BY: JDM
DATE: SEPTEMBER 27, 2004

RZ2.1

FOR PUBLIC HEARING
ZONING WORK SESSION

**CHARLOTTE - MECKLENBURG
PLANNING COMMISSION**

INTER - OFFICE COMMUNICATION

DATE: July 26, 2005

TO: Katrina Young,
Interim Zoning Administrator

FROM: Debra Campbell,
Planning Director



SUBJECT: Innovative Site Plan Approval for Petition No. 2005-006 by RR Management
Comp., LLC

Attached is an innovative site plan for Petition No. 2005-006. This plan proposes an innovative standard to allow a minimum lot size of 2500 square foot. Additionally, the limits of the common open space and tree save have been modified to accommodate the roadway alignments and lot adjustments.

The Zoning Committee of the Charlotte-Mecklenburg Planning Commission approved this innovative site plan on June 29, 2005. Please use this plan when evaluating requests for building permits and certificates of occupancy.

Note all other ordinance requirements still apply.