

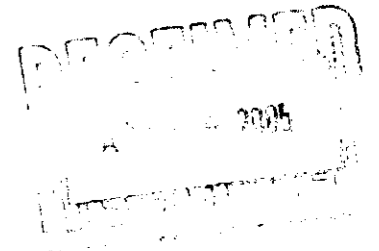
APPROVED BY CITY COUNCIL
DATE 3/21/05

NORTH C
(VARIA)

NORTH CALDWELL STREET
(VARIABLE PUBLIC R/W)

PROPOSED
ARENA

FUTURE
DEVELOPMENT
SITE



TWO (2) TREES TO BE
DELETED. SEE
CHARLOTTE ARENA
SIGNAGE STANDARDS
NOTE #4.

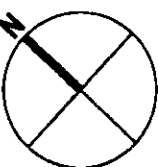
EDGE OF
BUILDING
OVERHANG
VIDEO BOARD
LOCATION
ABOVE



NEW CHARLOTTE ARENA
FOR PUBLIC HEARING - PETITION #2005-020

Project No. 2637 Issued 02.23.05 SCALE: 1" = 80'

REZONING SITE PLAN



**CHARLOTTE ARENA
EXTERIOR SIGNAGE**

CHARLOTTE, NC

04-007



Exterior Signage

- 1 Signage Matrix
- 2 AD.01 5th Street Plaza Sponsorship ID
- 3 AD.02 5th Street Pageantry Banners
- 4 AD.03a Practice Court Sponsor
- 5 AD.03b Practice Court Pageantry Banners
- 6 AD.04 5th Street Naming Rights ID
- 7 AD.06 Naming Rights at 5th Street/ East Trade Street
- 8 AD.07a East Trade Street Video Marquee
- 9 AD.07b 5th Street Video Marquee
- 10 AD.08 East Trade Street Naming Rights ID
- 11 AD.09 East Trade Street Arcade Pageantry Banners
- 12 Team Store Entrance at East Trade Street

CITY OF CHARLOTTE, NC OWNER
Engineering & Property Management
600 East Fourth Street
Charlotte, North Carolina 28202-2844
704 336 4625
704 336 4554

ELLERBE BECKET ARCHITECT
4600 Madison Ave., Suite 1000
Kansas City, Missouri 64112
816 561 4443
816 561 2863

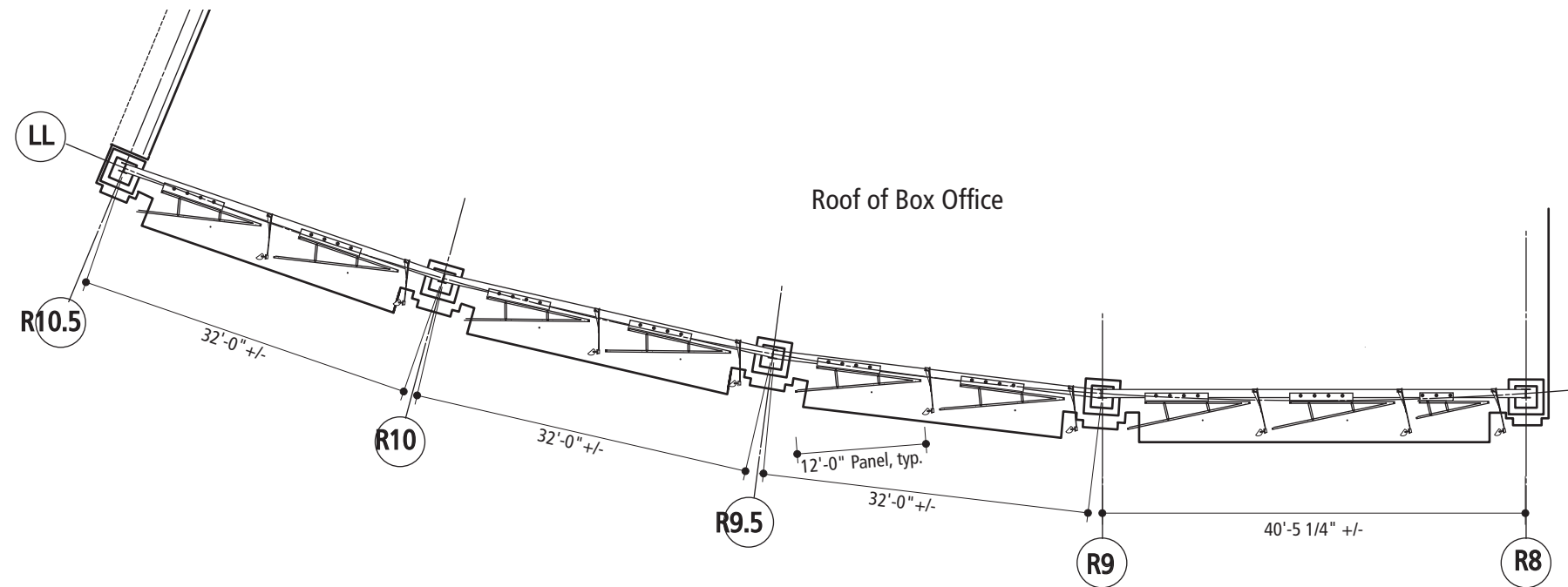
WORKSHOP DESIGN L. L. C. GRAPHIC DESIGN
1925 Central Street, Suite 300
Kansas City, Missouri 64108-2054
816 842 4460
816 842 4468
ATTN: Christopher Molinsky, NCARB
Scott Bond, SEGD

CHARLOTTE ARENA
EXTERIOR SIGNAGE
 CHARLOTTE, NC
 04-007

ITEM	QUANTITY	SIZE	METHOD OF FABRICATION	ILLUMINATION
AD.01	8 large 1 small	1442 sqft Total	Digital mesh graphic applied over metal frame	External, 3 lights per panel, from right side baffled by adjacent panel.
AD.02	8	72 sqft each	Cooley flex face banner held in metal stretcher at top, bottom and midpoint.	External, from bottom of banner, each side
AD.03a	1 large 2 small	198.75 sqft, total	Channel letterform with lexan face held in metal frame 2 Metal panel team logo graphics with scotch print face	Internal for main sign None for logos
AD.03b	5	34 sqft each	Cooley flex face banner held in metal stretcher at top and bottom	None
AD.04	1	335 sqft	Reverse channel letterforms attached to metal frame	Halo Illuminated TBD
AD.06	2	21 sqft	Laser cut metal letterforms attached to top of canopy	None
AD.07a	1	542 sqft	LED screen with surrounding graphics	LED
AD.07b	1	212.5 sqft	LED screen with surrounding graphics	LED
AD.08	1	300 sqft	Reverse channel letterforms attached to metal frame	Halo Illuminated TBD
AD.09	8	72 sqft	Cooley flex face banner held in metal stretcher at top, bottom and midpoint	External from bottom of banner, each side
Team store	1	21 sqft	Laser cut metal letterforms attached to top of canopy	None

FOR PUBLIC HEARING
 2005-020

©2005 Workshop Design L.L.C.



1 5th Street Plaza Sponsorship Identification Sign, Plan Section at Support Beam
Scale: 1/16" = 1'-0"



2 5th Street Plaza Sponsorship Identification Sign, Location Elevation
Scale: 1/16" = 1'-0" Note: Elevation is Curved.

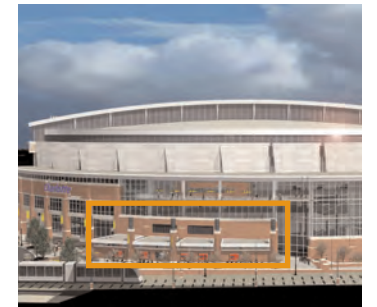
Quantity 8 large, 1 small

1. Construction: Mesh graphic with digital graphics applied over metal frame
2. Lighting: External, applied to right edge as the panels are canted to mimic the panels on the building facade.

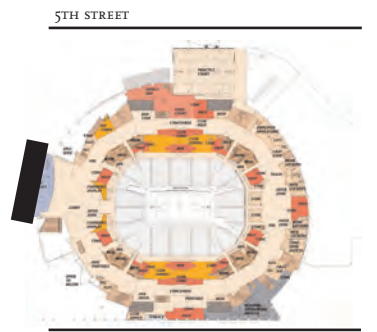
Large	168 sqft
Small	98 sqft
Total	1442 sqft

**CHARLOTTE ARENA
EXTERIOR SIGNAGE**

CHARLOTTE, NC
04-007



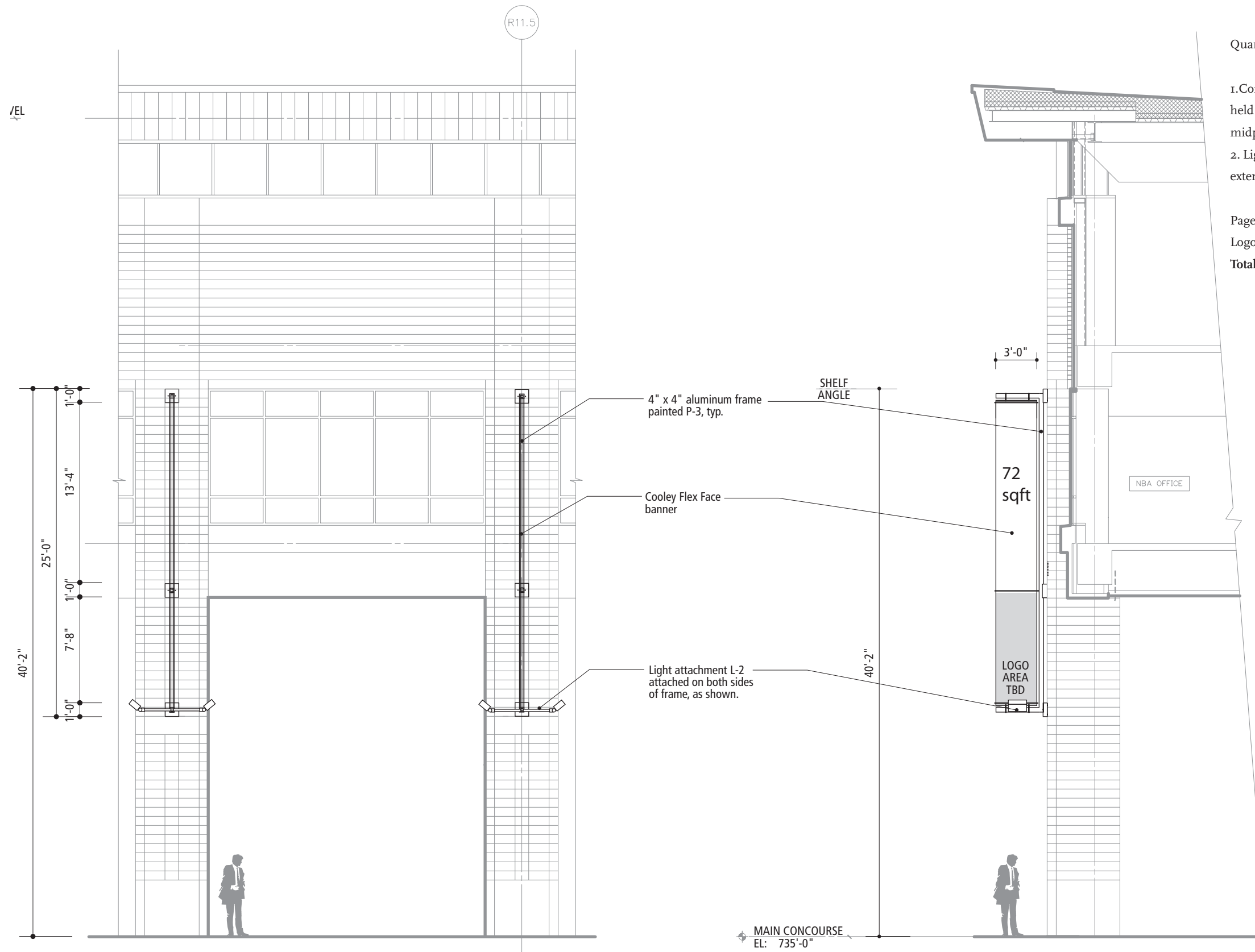
LOCATION ELEVATION



KEY PLAN

FOR PUBLIC HEARING
2005-020

©2005 Workshop Design L.L.C.



Quantity 8

1. Construction: Cooley flex face banner held in metal stretcher at top, bottom, and midpoint.
2. Lighting: From bottom of banner, external, each side.

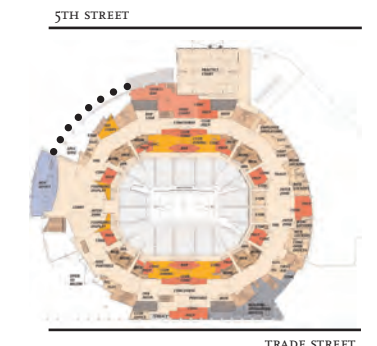
Pageantry	50 sqft
Logo	22 sqft
Total	72 sqft

**CHARLOTTE ARENA
EXTERIOR SIGNAGE**

CHARLOTTE, NC
04-007



LOCATION ELEVATION



KEY PLAN

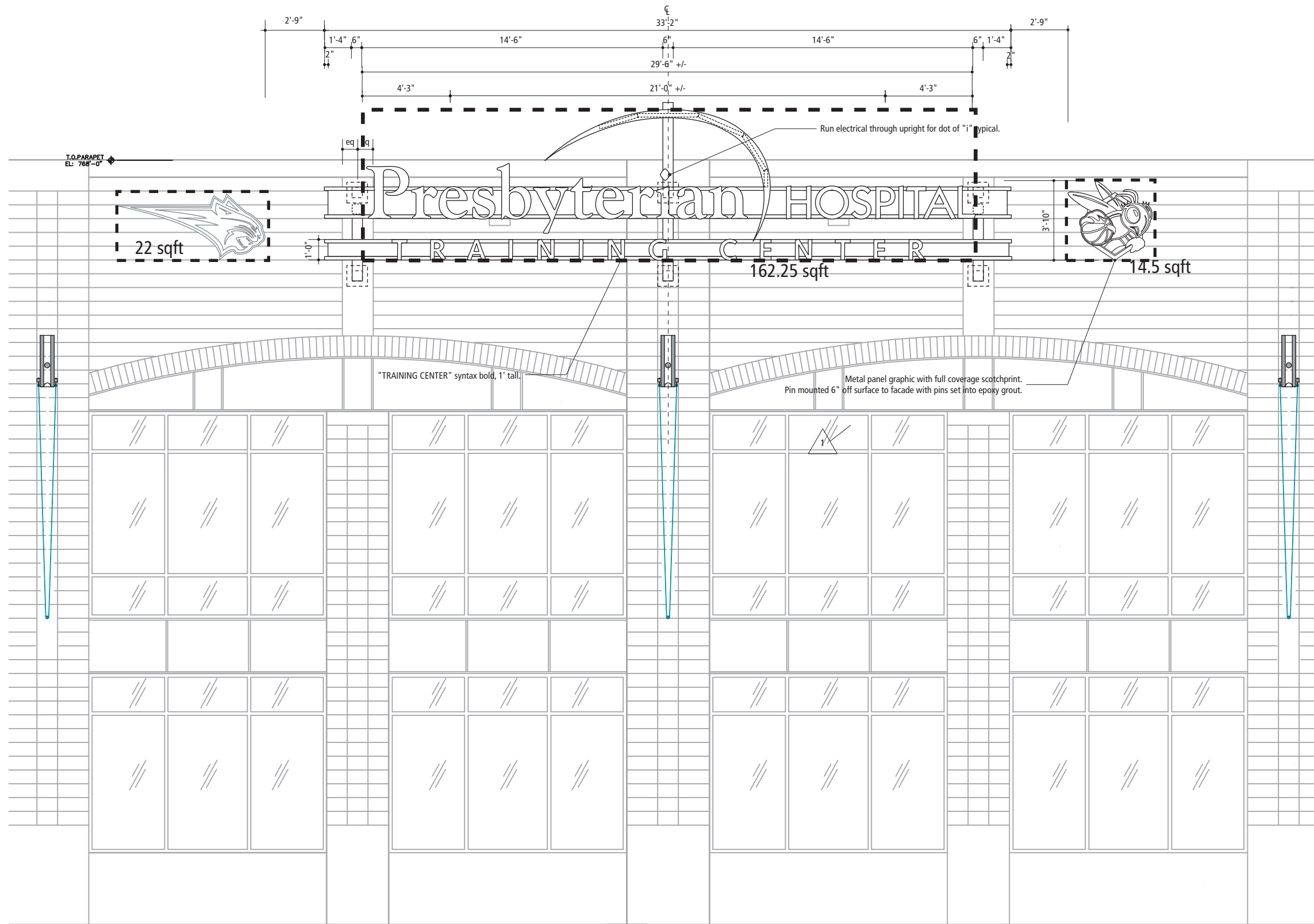
FOR PUBLIC HEARING
2005-020

©2005 Workshop Design L.L.C.

SHEET NUMBER SHEET DATE
3 01.24.05

1 5th Street Pageantry Banner Location Elevation
Scale: 1/8" = 1'-0"

2 5th Street Pageantry Banner Section
Scale: 1/8" = 1'-0"



Quantity 1

1. Construction: Main sign, channel letterform with lexan face held in metal frame. Logos, metal panel graphic with full coverage scotch-print.
2. Illumination: Main sign, internal. Logos, none.

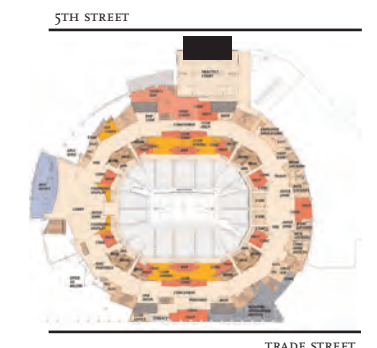
Main sign	162.25 sqft
Bobcat logo	22 sqft
Sting logo	14.5 sqft
Total	198.75 sqft

**CHARLOTTE ARENA
EXTERIOR SIGNAGE**

CHARLOTTE, NC
04-007



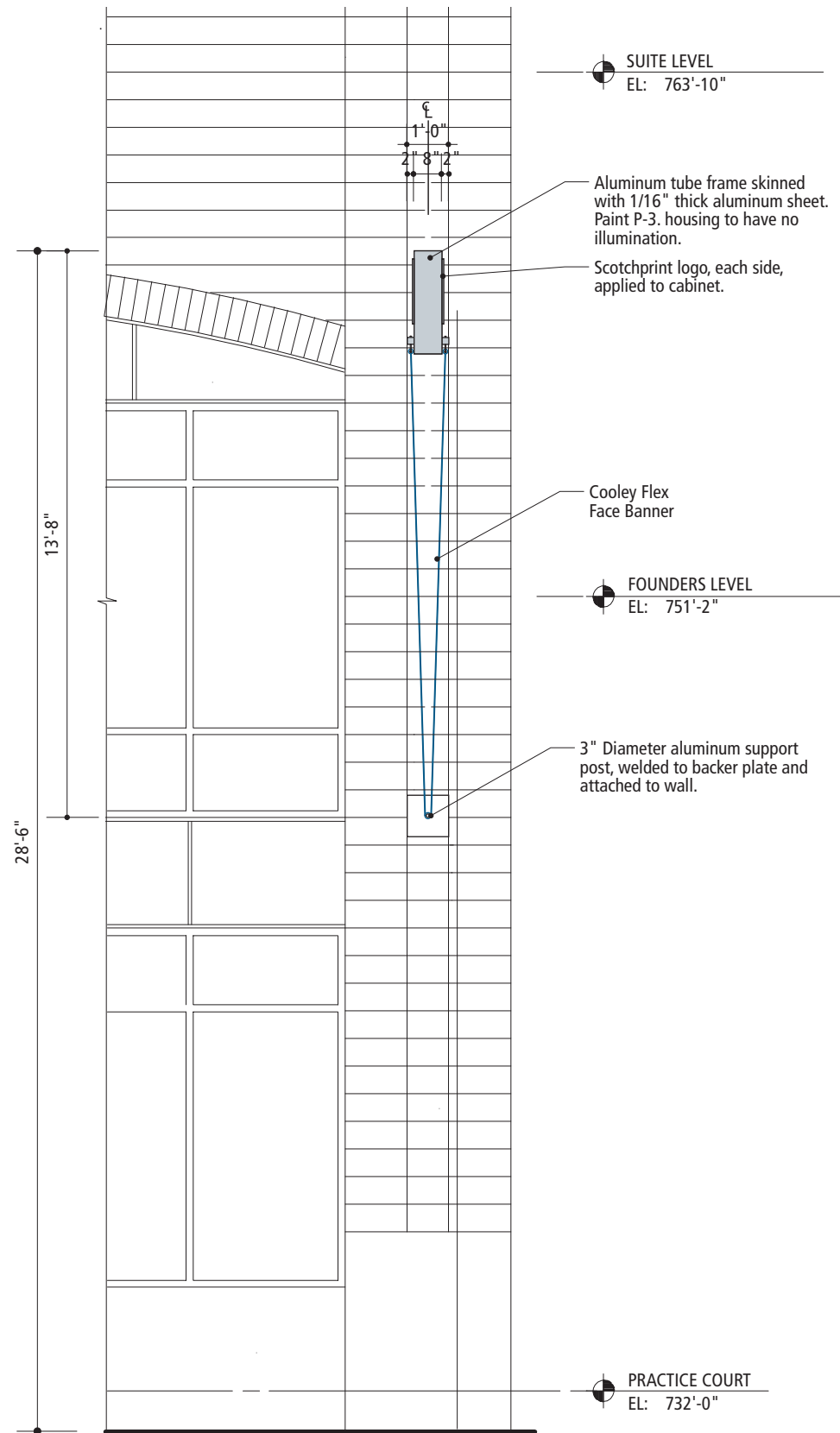
LOCATION ELEVATION



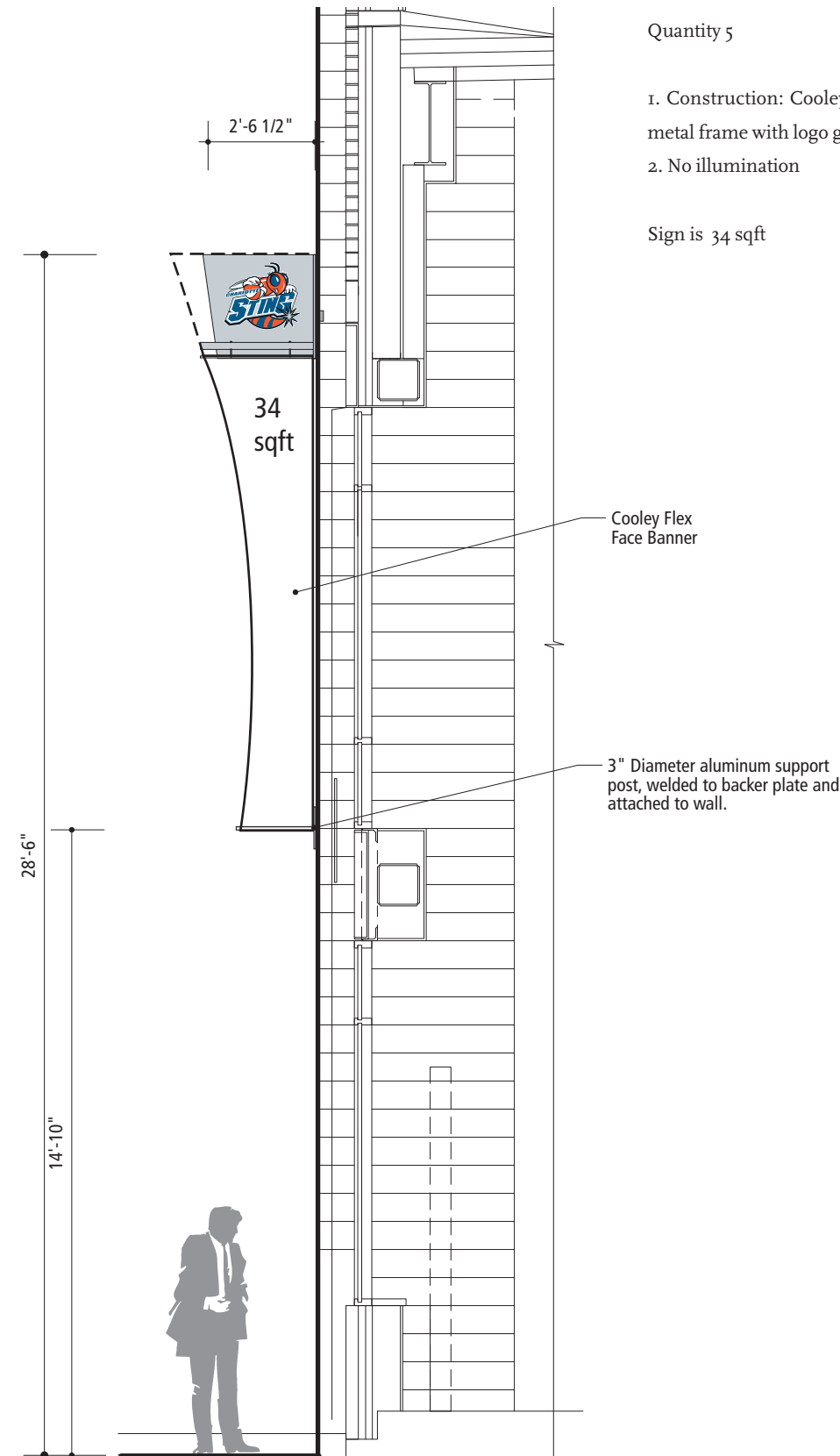
KEY PLAN

FOR PUBLIC HEARING
2005-020

1 Practice Court ID, Elevation
Scale: 3/16" = 1'-0"



1 Typ. Bay - North Enlarged Elevation @ Practice Court Pagentry
Scale: 1/4" = 1'-0"



2 Wall Section @ Practice Court Pagentry Banner
Scale: 1/4" = 1'-0"

Quantity 5

- 1. Construction: Cooley flex face held in metal frame with logo graphic.
- 2. No illumination

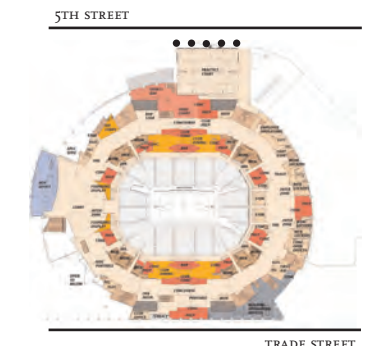
Sign is 34 sqft

**CHARLOTTE ARENA
EXTERIOR SIGNAGE**

CHARLOTTE, NC
04-007



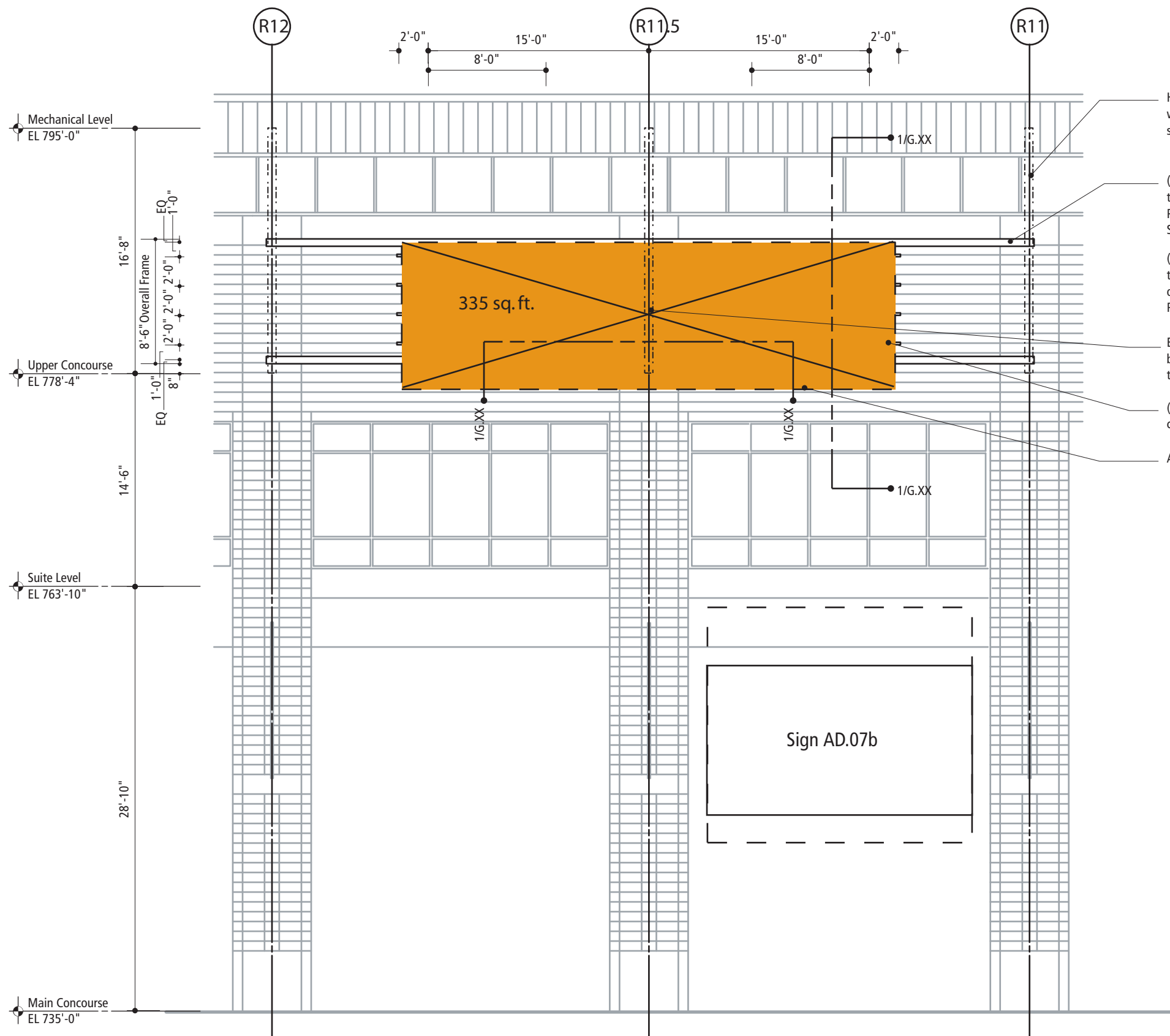
LOCATION ELEVATION



KEY PLAN

FOR PUBLIC HEARING
2005-020

©2005 Workshop Design L.L.C.



HSS 6x6x1/2 Column inside of pier at three locations with vertical slip connection at top with 1" clear to structure. Provided per CI #3.

(2) HSS 6x6x1/4 horizontal members with full penetration weld to HSS 6x6x1/2 Column-- Paint P-____ Provide per CI #3 for attachment of signage in CI #5. See Section for details.

(5) HSS 4x4x1/4 Uprights welded to horizontal members to create frame for signage. Align 4x4 flush with back edge of 6x6 to create 2" space for secondary members. Provide per CI #3. Paint P-____.

Electrical for sign work provided in center column behind framework (277volt) Make all connections to this circuit(s).

(4) HSS 2x2x1/4 uprights welded to 4x4 horizontals to create frame as shown. Provide per CI #3. Paint P-____.

Area of future Naming Rights signage, T.B.D.

Quantity 1

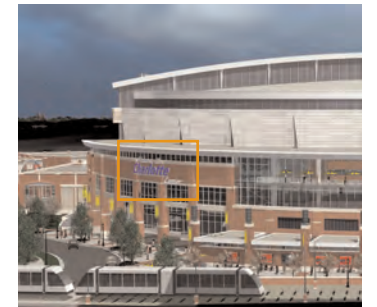
1. Construction: Reverse channel letter forms attached to metal frame
2. Illumination: Halo illumination of logo TBD

Sign area is 335 sqft

**CHARLOTTE ARENA
EXTERIOR SIGNAGE**

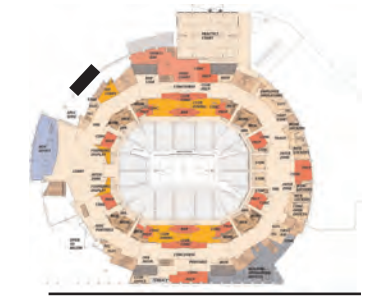
CHARLOTTE, NC

04-007



LOCATION ELEVATION

5TH STREET



KEY PLAN

FOR PUBLIC HEARING

2005-020

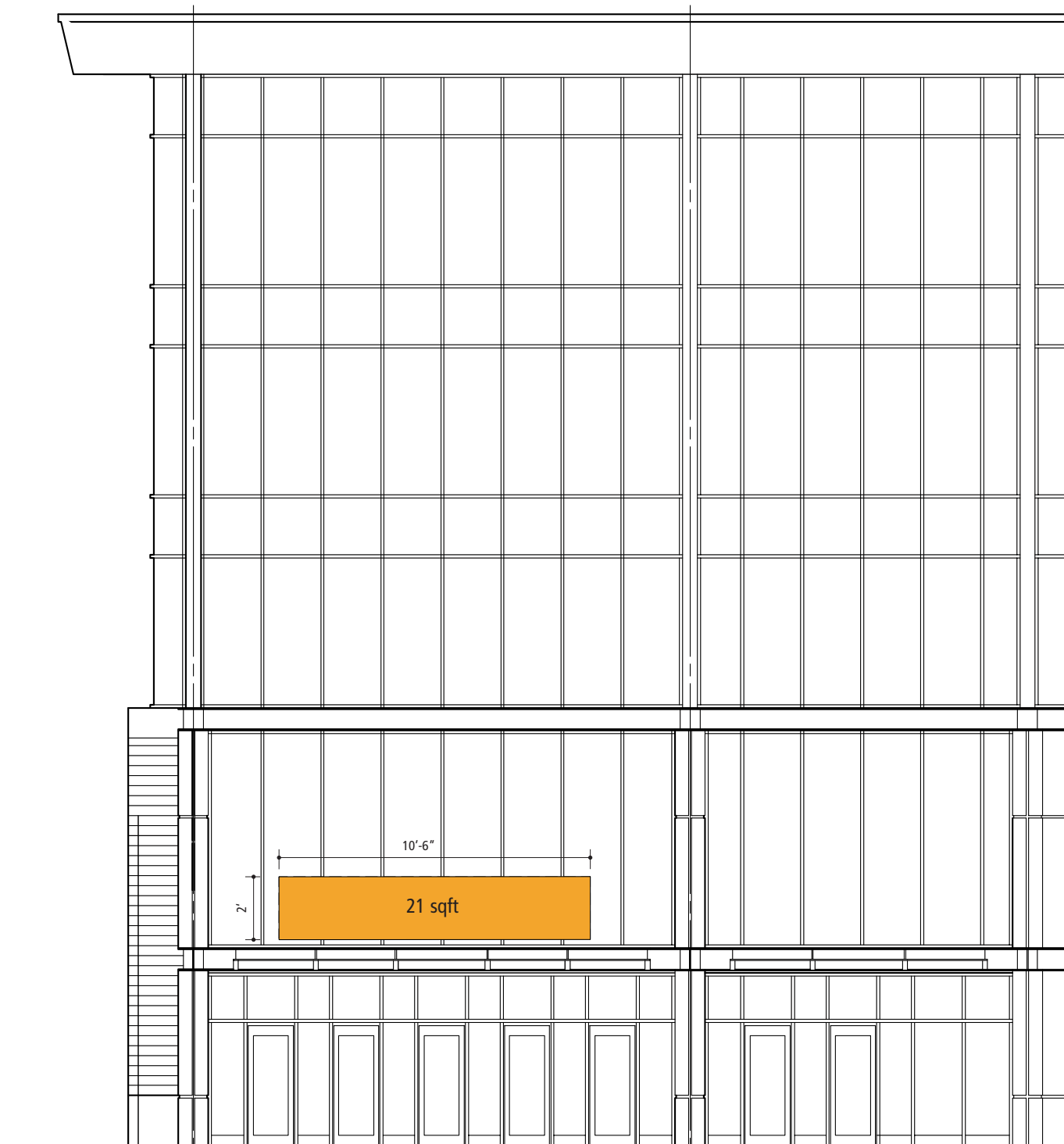
©2005 Workshop Design L.L.C.

1 5th Street Naming Rights Signage
Scale: 1/8" = 1'-0"

Quantity 2

- 1. Construction is laser cut metal letterforms attached to top of canopy.
- 2. Illumination : none

Sign area is 21 sqft each



**CHARLOTTE ARENA
EXTERIOR SIGNAGE**

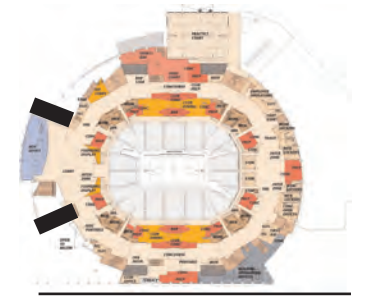
CHARLOTTE, NC

04-007



LOCATION ELEVATION

5TH STREET



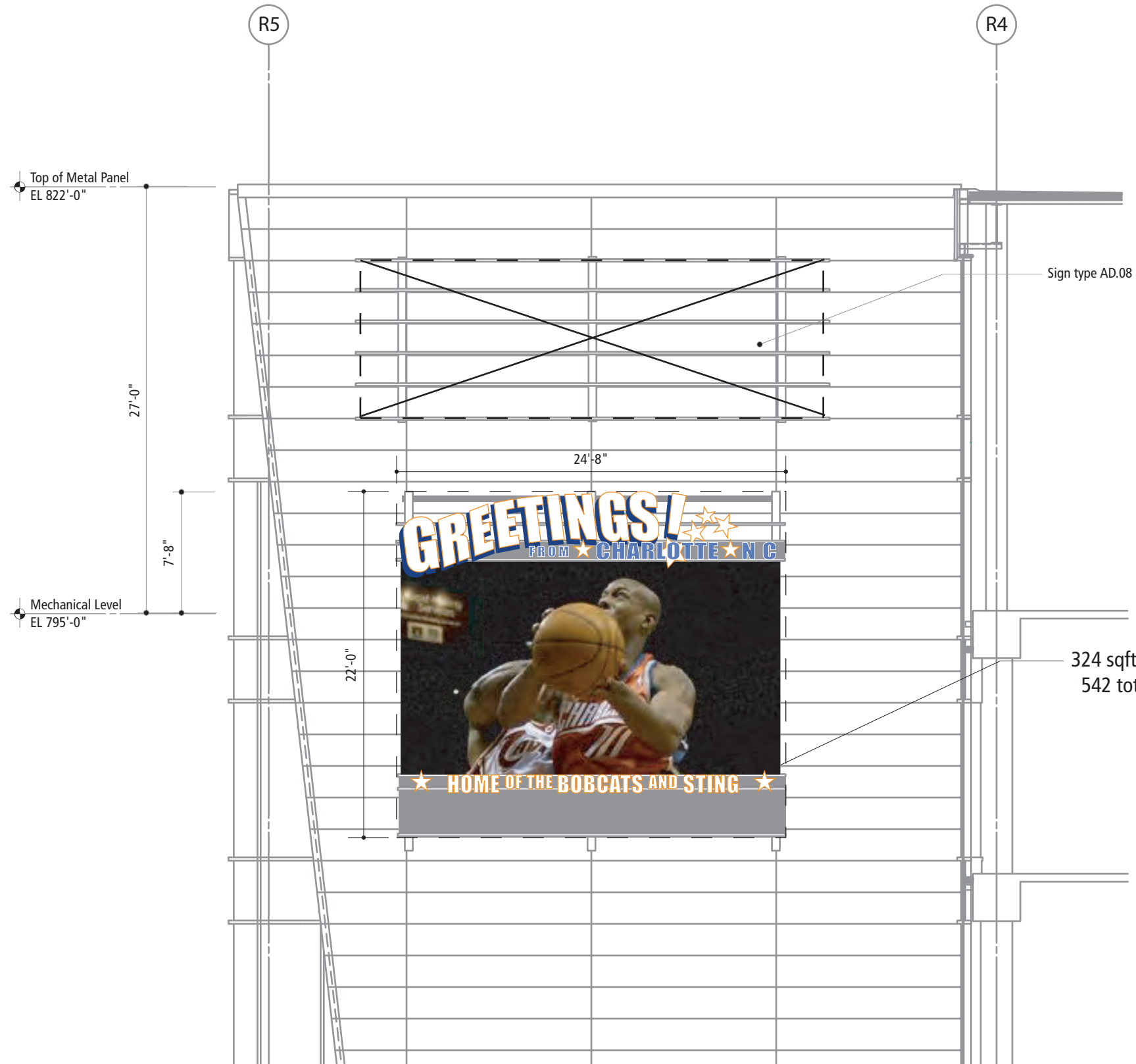
TRADE STREET

KEY PLAN

FOR PUBLIC HEARING

2005-020

©2005 Workshop Design L.L.C.



1 East Trade Street Video Marquee Signage, Elevation
Scale: 1/8" = 1'-0"

Quantity 1

- 1. Construction: LED board in metal frame
- 2. Lighting: LED

Sign area is 324 sqft for LED video
542 for total sign.

**CHARLOTTE ARENA
EXTERIOR SIGNAGE**

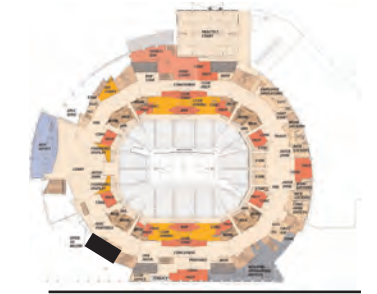
CHARLOTTE, NC

04-007



LOCATION ELEVATION

5TH STREET



KEY PLAN

TRADE STREET

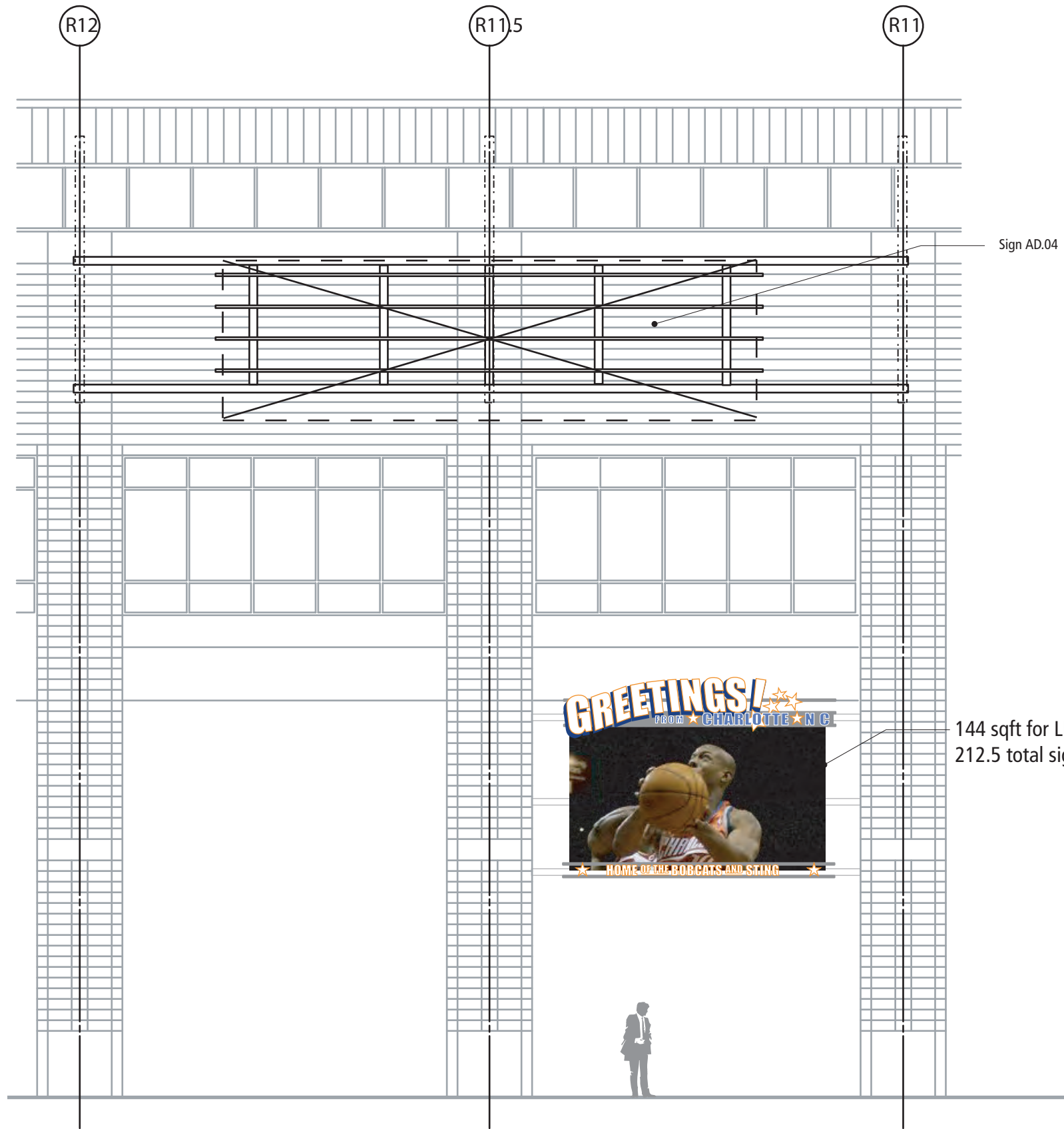


24'x13.5' Video Display

FOR PUBLIC HEARING

2005-020

©2005 Workshop Design L.L.C.



Quantity 1

- 1. Construction: LED board in metal frame
- 2. Lighting: LED

Sign area 144 sqft for LED video
212.5 for total sign.

**CHARLOTTE ARENA
EXTERIOR SIGNAGE**

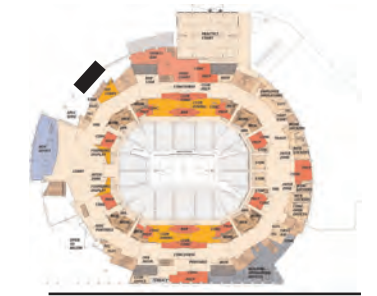
CHARLOTTE, NC

04-007



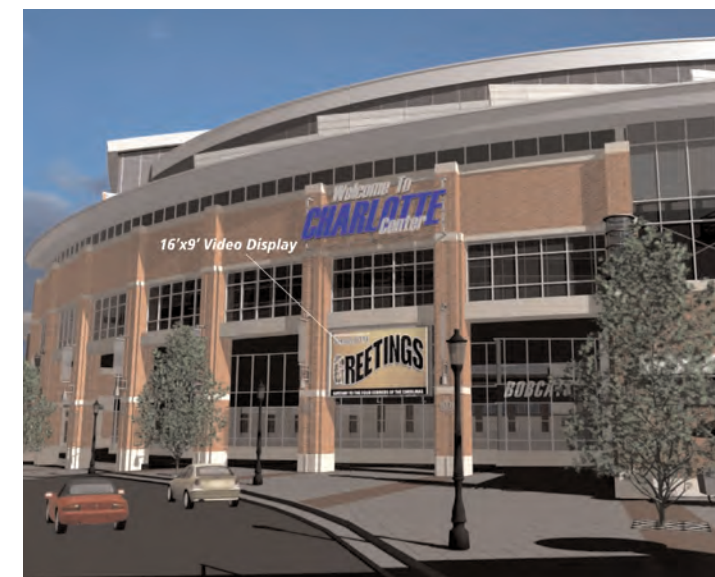
LOCATION ELEVATION

5TH STREET



KEY PLAN

TRADE STREET



1 5th Street Video Marquee
Scale: 1/8" = 1'-0"

FOR PUBLIC HEARING
2005-020

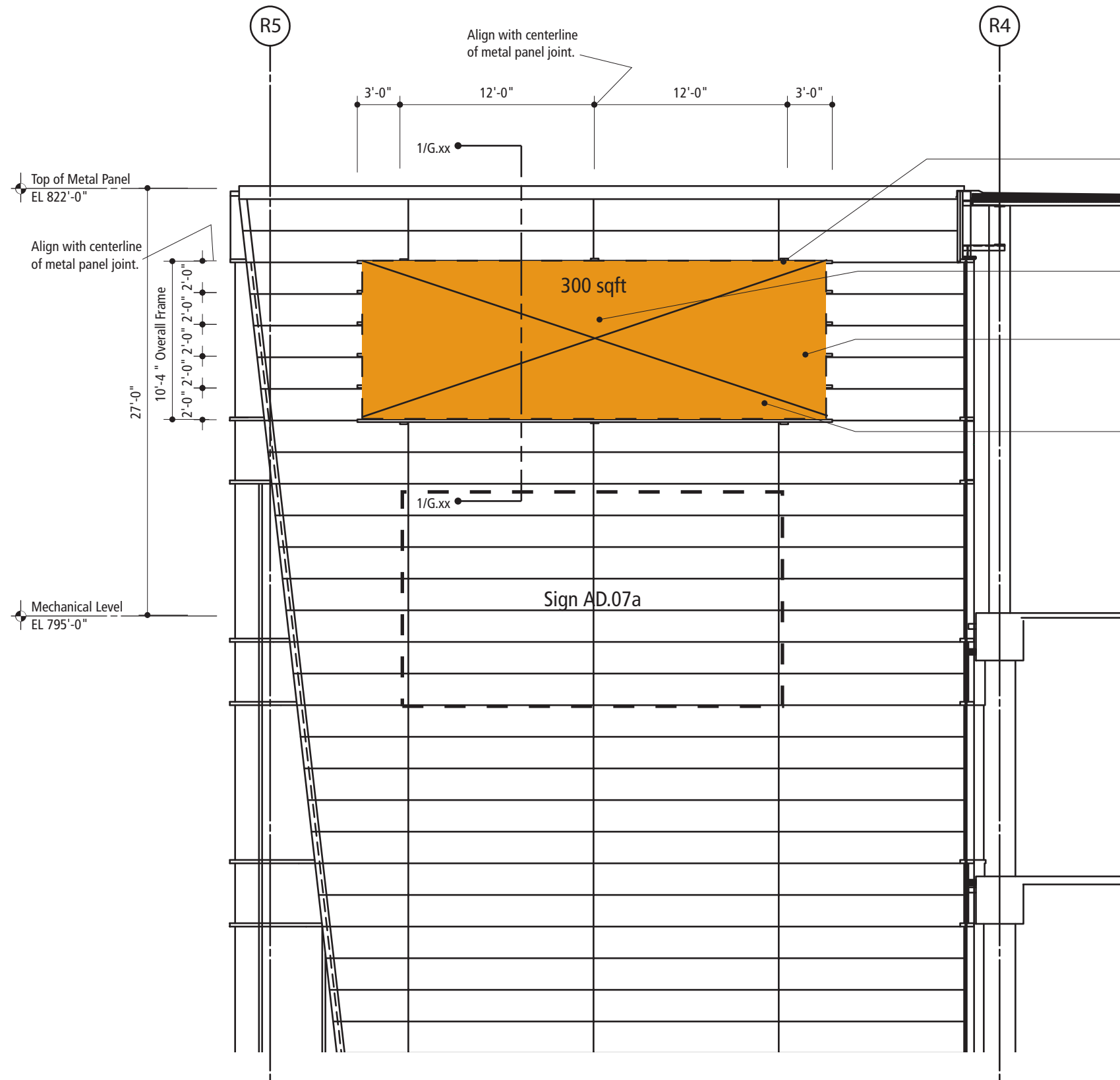
©2005 Workshop Design L.L.C.

SHEET NUMBER

SHEET DATE

9

01.24.05



- (3)HSS 4x4x1/4 Fully welded rigid frame with full penetration weld to back up tube for metal panel wall. Coordinate with metal panel manufacturer. Paint P-____ Part of CI # 3 work.
- Electrical for sign provided behind framework (277volt) Make all connections to this circuit. Electrical at 84'-0" +/-
- (6) HSS 2x2x1/4 fully welded to 4x4 frame spaced as shown provided under CI # 3, for attachment of sign. Paint P-____.
- Area of future Naming Rights signage, T.B.D.

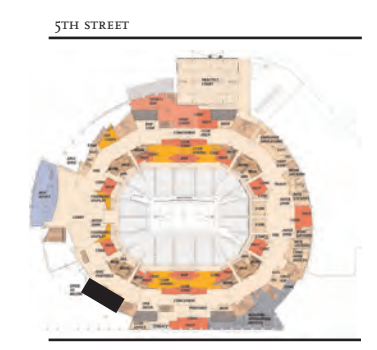
- Quantity 1
1. Construction: channel letters attached to metal frame
 2. Illumination: halo
- Sign area is 300 sqft

1 East Trade Street Naming Rights Signage, Elevation
Scale: 1/8" = 1'-0"

CHARLOTTE ARENA
EXTERIOR SIGNAGE
CHARLOTTE, NC
04-007



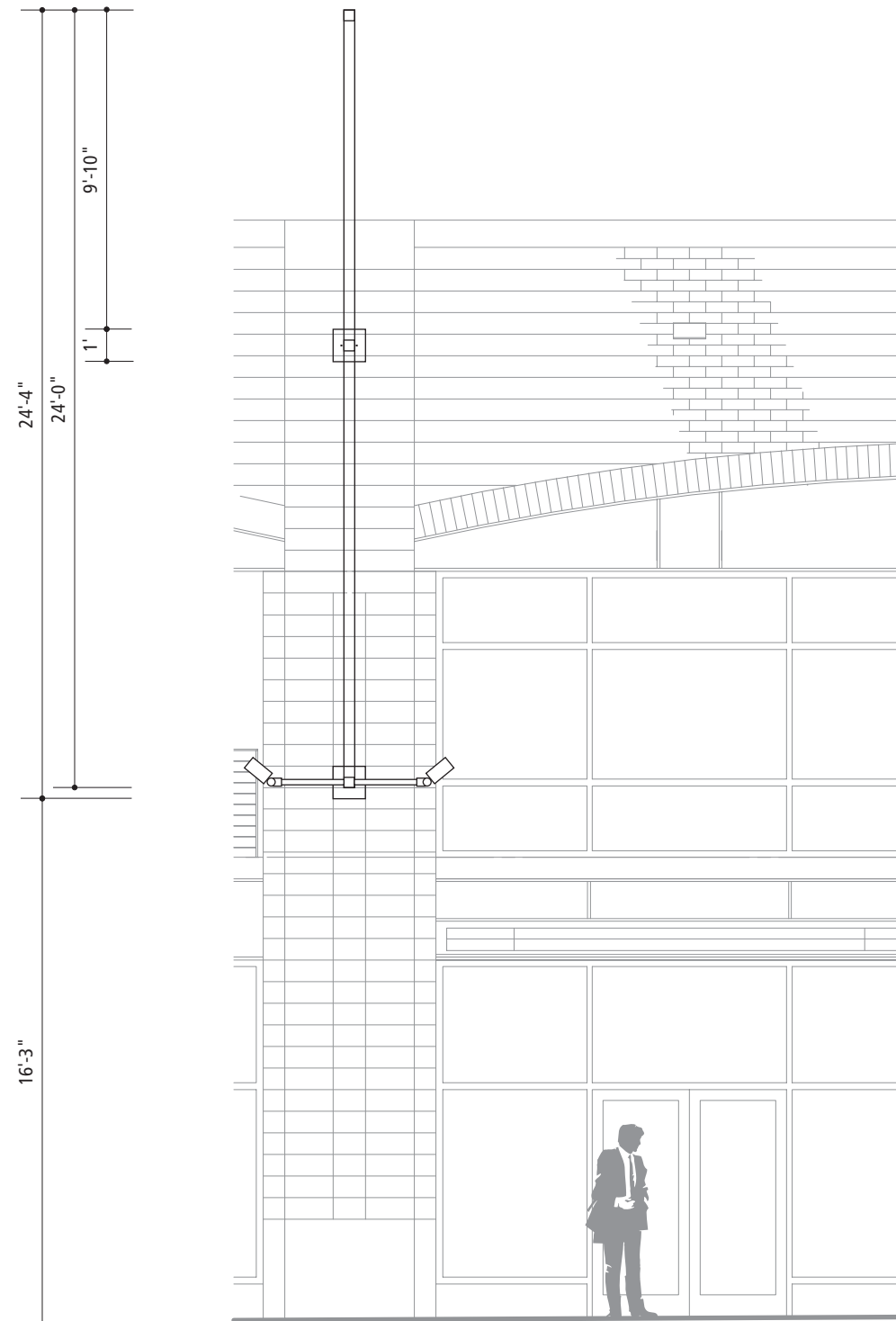
LOCATION ELEVATION



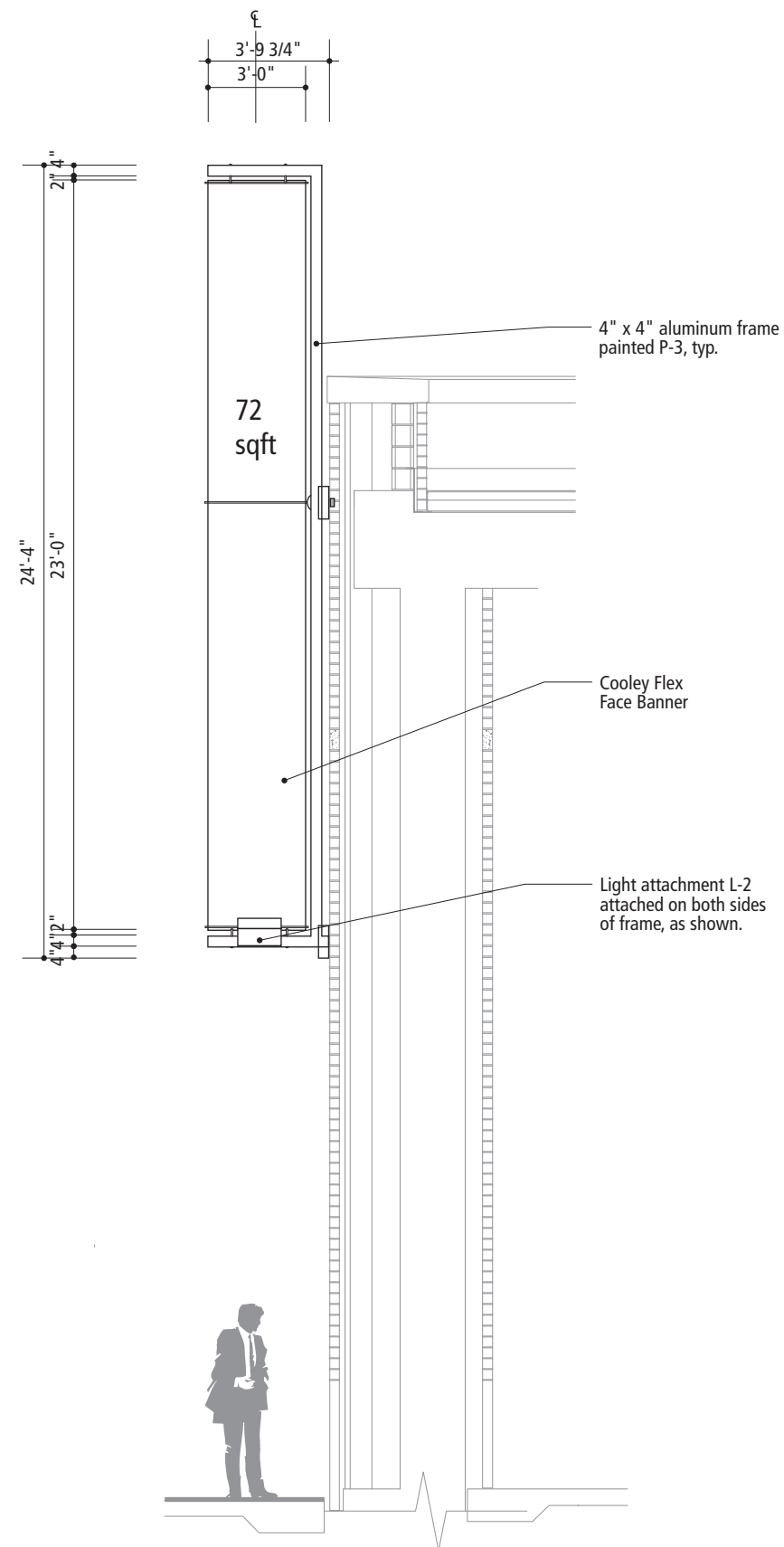
KEY PLAN

FOR PUBLIC HEARING
2005-020

©2005 Workshop Design L.L.C.



1 East Trade Street Arcade Pagentry Banners, Elevation
Scale: 3/16" = 1'-0"



2 Wall Section @ South Pilaster Typ. with Pagentry
Scale: 3/16" = 1'-0"

Quantity 8

1. Construction: Cooley flex face banner held in metal stretcher at top, bottom, and midpoint.
2. Lighting: from bottom of banner, external, each side.

Sign area is 72 sqft

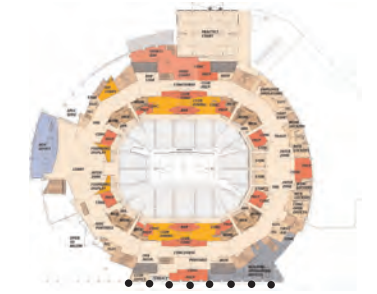
**CHARLOTTE ARENA
EXTERIOR SIGNAGE**

CHARLOTTE, NC
04-007



LOCATION ELEVATION

5TH STREET



KEY PLAN

FOR PUBLIC HEARING
2005-020

©2005 Workshop Design L.L.C.

Quantity 1

1. construction is laser cut metal letter-forms attached to top of canopy.

2. Illumination : none

Sign area is 21 sqft

**CHARLOTTE ARENA
EXTERIOR SIGNAGE**

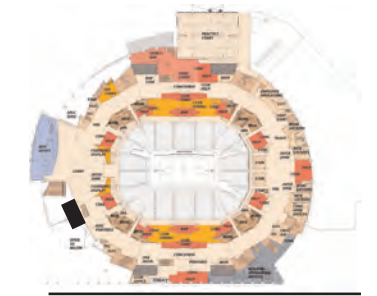
CHARLOTTE, NC

04-007



LOCATION ELEVATION

5TH STREET



KEY PLAN

FOR PUBLIC HEARING

2005-020

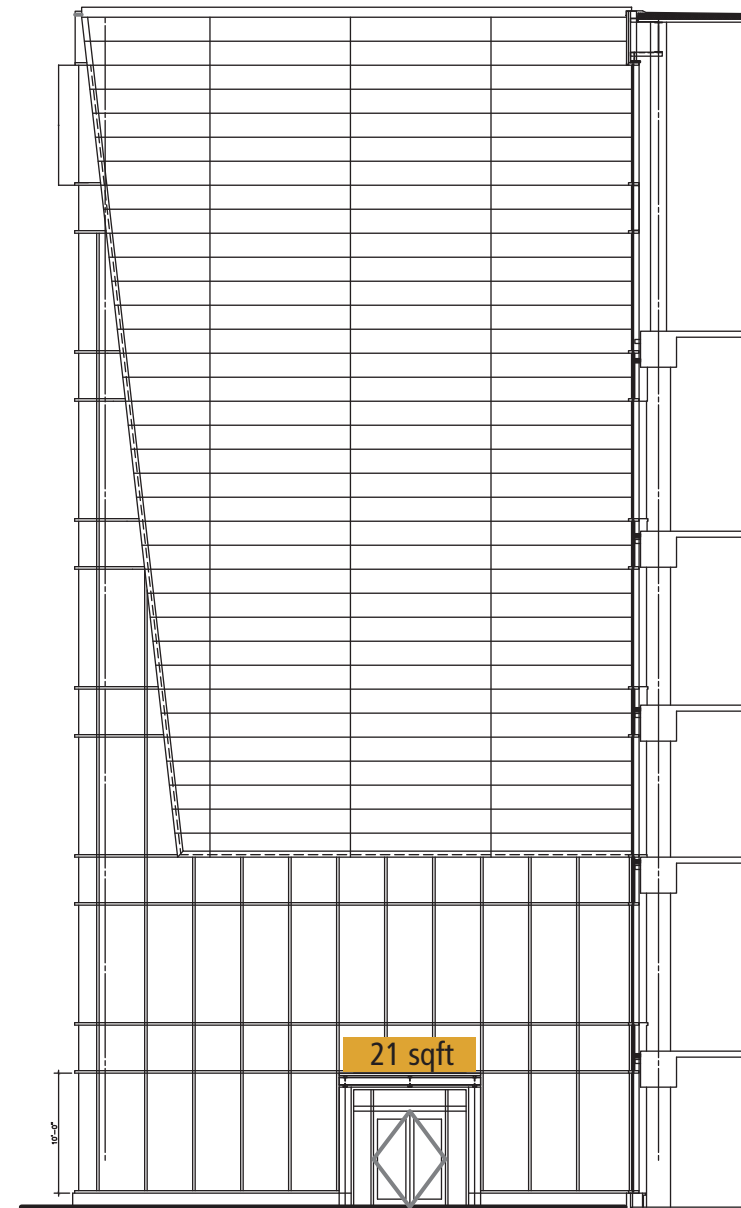
©2005 Workshop Design L.L.C.

SHEET NUMBER

SHEET DATE

I2

01.24.05



1 Team Store Entrance at East Trade Street
Scale: 1/16" = 1'-0"