

**SITE TABULATIONS:**

TOTAL AREA: ± 642.119 AC.  
 NET AREA: ± 638.9 AC. (NOT INCLUDING EXISTING PUBLIC R.O.W)

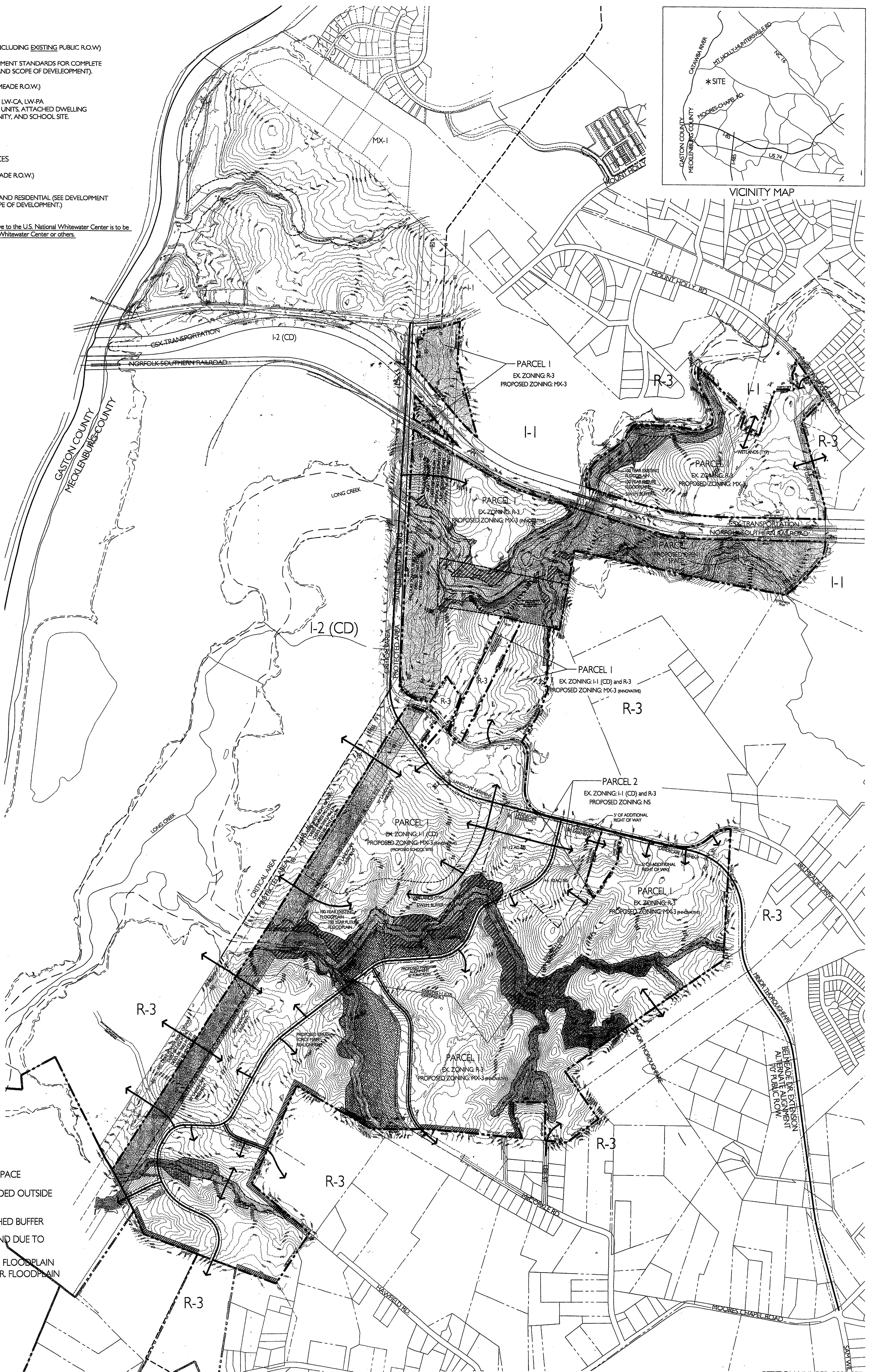
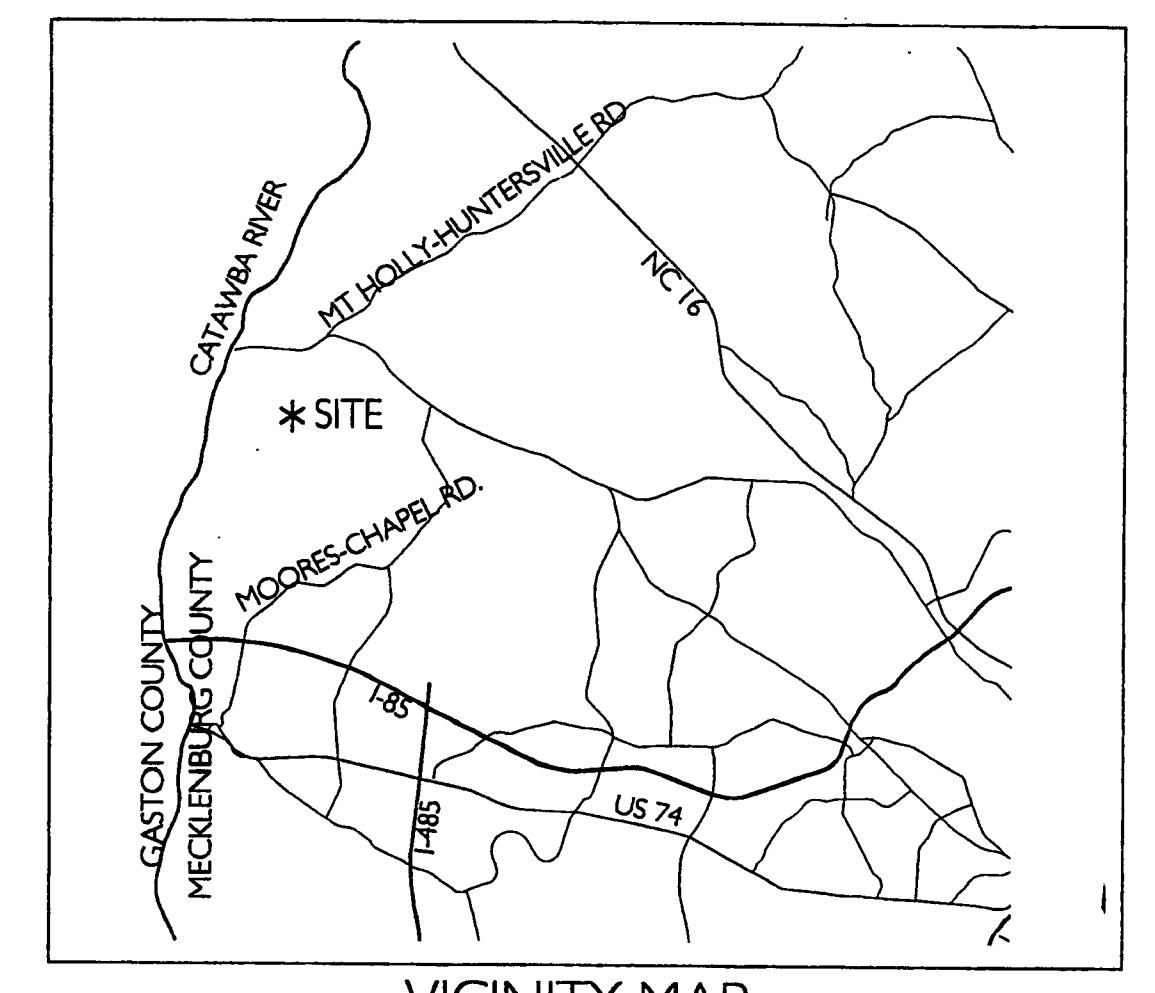
**PARCEL 1: RESIDENTIAL** (SEE DEVELOPMENT STANDARDS FOR COMPLETE LIST OF USES AND SCOPE OF DEVELOPMENT).

TOTAL AREA: +/- 617.975 AC  
 NET AREA: +/- 615.586 AC. (MINUS EX. BELMEADE R.O.W.)  
 EXISTING ZONING: R-3 AND I-2 (CD)  
 PROPOSED ZONING: MX-3 (INNOVATIVE), LW-CA, LW-PA  
 PROPOSED PRIMARY USES: SINGLE-FAMILY UNITS, ATTACHED DWELLING UNITS, COMMUNITY RECREATIONAL AMENITY, AND SCHOOL SITE.  
 REQUIRED OPEN SPACE: +/- 61.8 AC.  
 PROVIDED OPEN SPACE: +/- 192.7 AC.

**PARCEL 2: NEIGHBORHOOD SERVICES**

TOTAL AREA: +/-241.144 AC  
 NET AREA: +/- 233.33 AC. (MINUS EX. BELMEADE R.O.W.)  
 EXISTING ZONING: I-1 (CD) AND R-3  
 PROPOSED ZONING: NS, LW-PA  
 PROPOSED PRIMARY USES: COMMERCIAL AND RESIDENTIAL (SEE DEVELOPMENT STANDARDS FOR LIST OF USES AND SCOPE OF DEVELOPMENT).

**NOTE:** The entrance road from Belmeade Drive to the U.S. National Whitewater Center is to be designed and constructed by the U.S. National Whitewater Center or others.



**LEGEND**

- NATURAL BUFFER
- WETLANDS
- DESIGNATED OPEN SPACE
- FLOODPLAIN EXTENDED OUTSIDE STREAM BUFFER
- SWIM AND WATERSHED BUFFER
- UNDEVELOPABLE LAND DUE TO STEEP SLOPES
- FUTURE FEMA 100 YR. FLOODPLAIN
- EXISTING FEMA 100 YR. FLOODPLAIN

PETITION NUMBER: 2005-077

02/25/05 JOB NO. 1004227

**LandDesign**  
 223 N Graham Street Charlotte, NC 28202  
 V: 704.333.0325 F: 704.332.3246  
 www.LandDesign.com

**WHITWATER - REZONING PETITION**  
**TECHNICAL DATA SHEET**  
 CHARLOTTE, NORTH CAROLINA

APPROVED BY CITY COUNCIL  
 DATE: 9/19/05

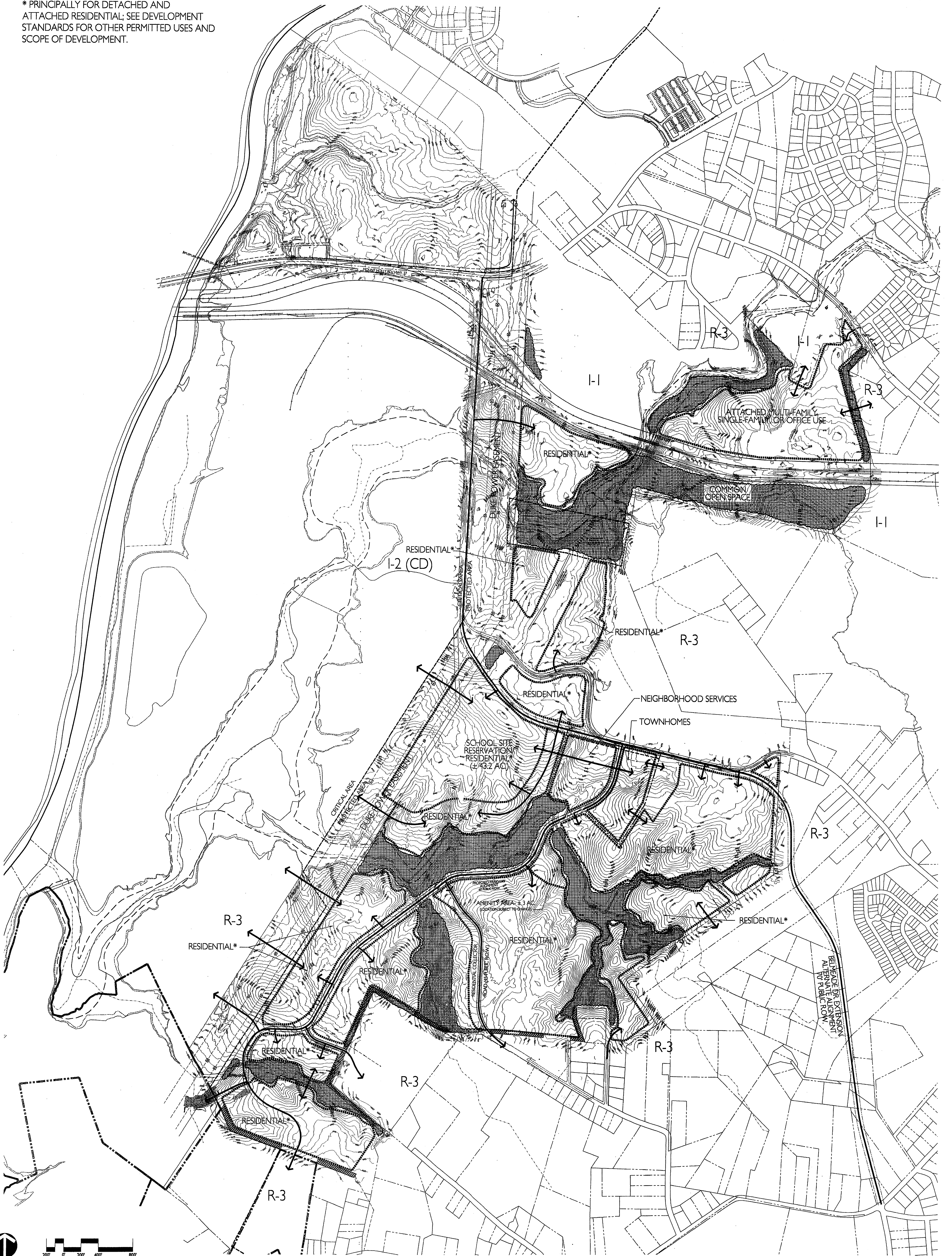
- REVISIONS 1: 4-20-05 REVISIONS PER STAFF REVIEW
- REVISIONS 2: 5-20-05 REVISIONS PER STAFF REVIEW
- REVISIONS 3: 06-20-05 PUBLIC MEETING
- REVISIONS 4: 07-05-05 REMOVED STREET SECTIONS
- REVISIONS 5: 08-04-05 REVISIONS TO LAYOUT
- REVISIONS 6: 09-09-05 REVISIONS TO LAYOUT
- REVISIONS 7: 09-16-05 REVISIONS TO LAYOUT
- REVISIONS 8: 02-20-06 REVISIONS TO LAYOUT







\* PRINCIPALLY FOR DETACHED AND ATTACHED RESIDENTIAL; SEE DEVELOPMENT STANDARDS FOR OTHER PERMITTED USES AND SCOPE OF DEVELOPMENT.



02/25/05 JOB NO. 1004227

# WHITEWATER - REZONING PETITION

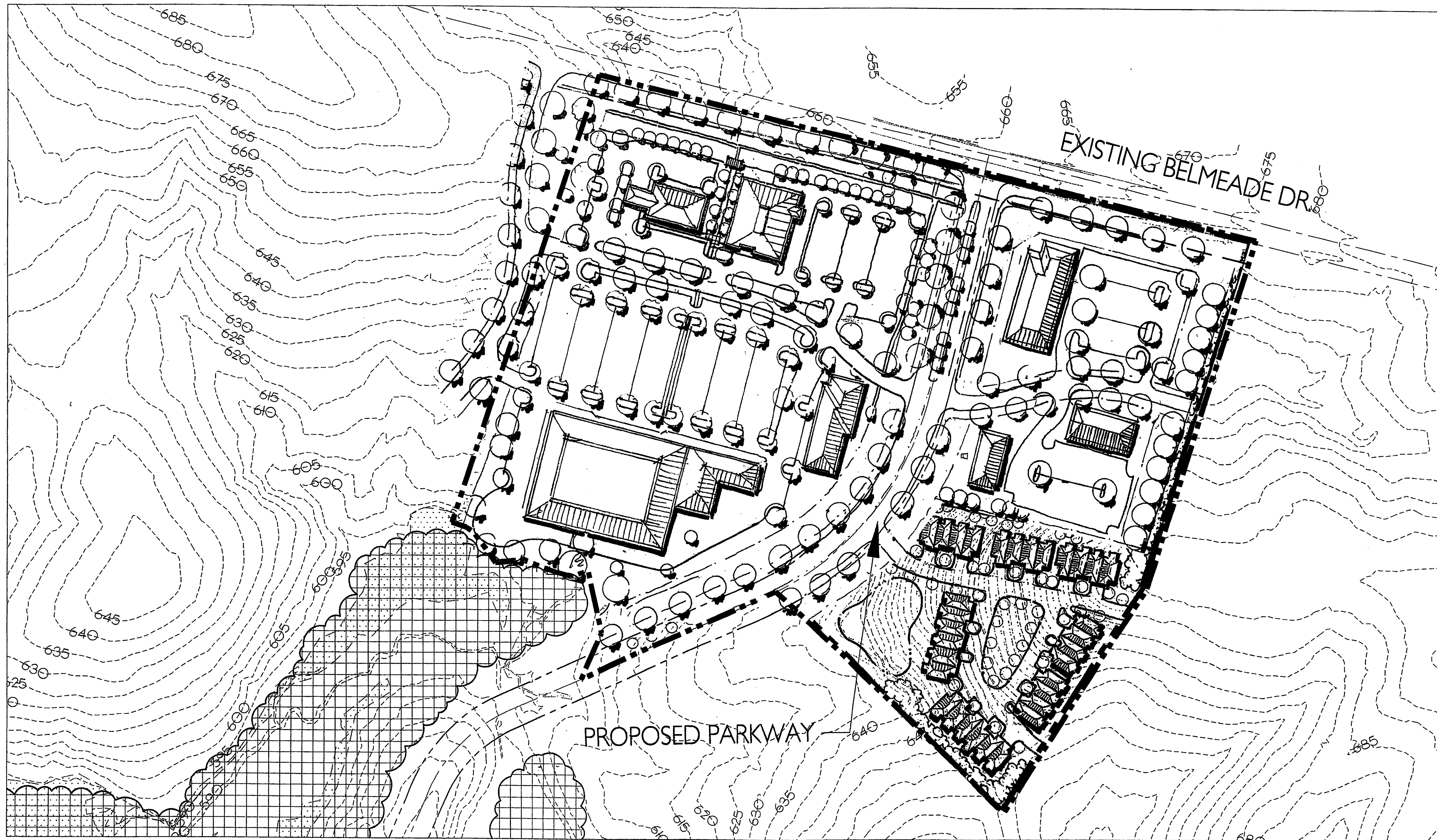
## CONCEPTUAL LAND USE

CHARLOTTE, NORTH CAROLINA

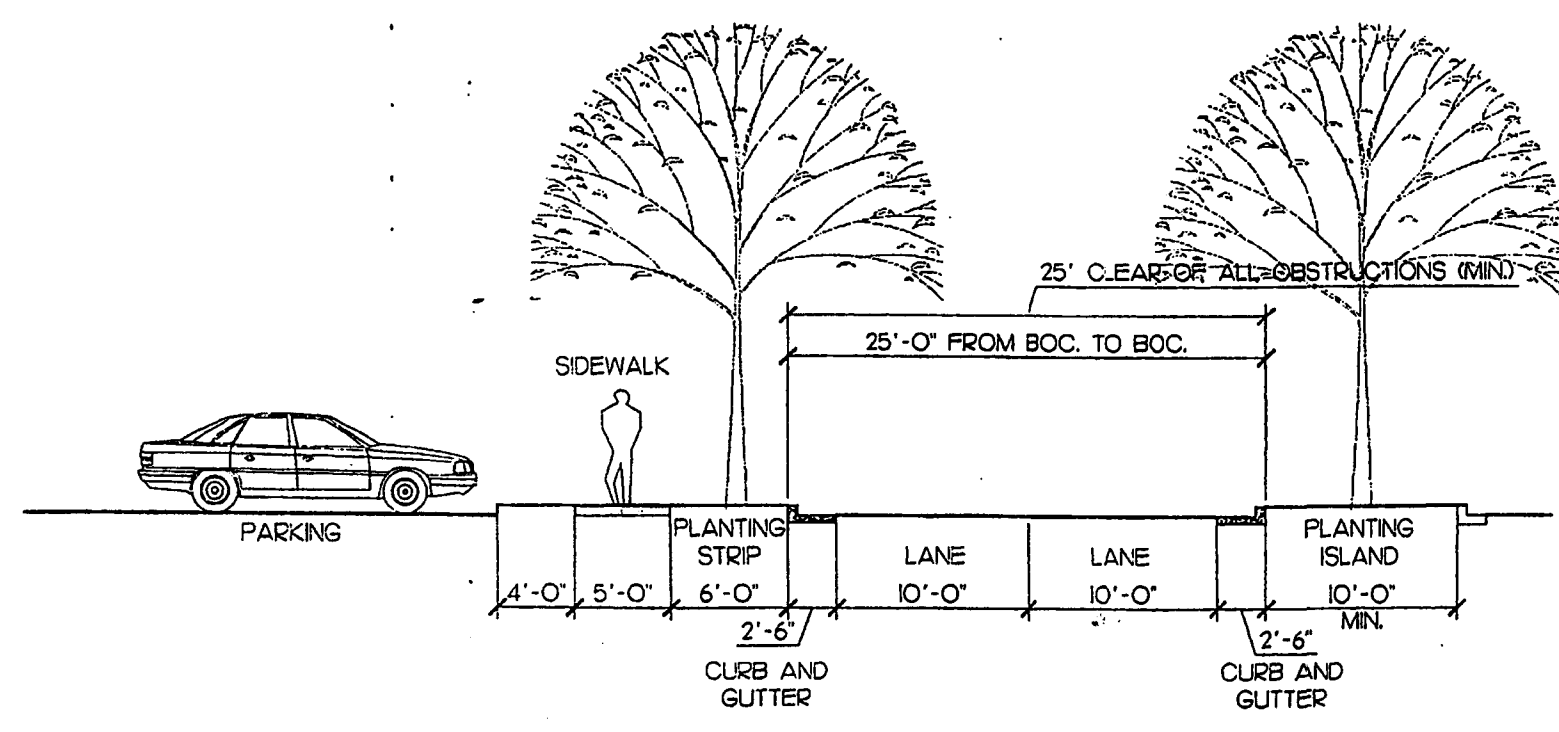
REVISIONS 1: 4-20-05 REVISIONS PER STAFF REVIEW EW  
 REVISIONS 2: 5-20-05 REVISIONS PER STAFF REVIEW EW  
 REVISIONS 3: 06-20-05 PUBLIC MEETING JNS  
 REVISIONS 4: 07-05-05 REMOVED STREET SECTIONS JNS  
 REVISIONS 5: 08-04-05 REVISIONS TO LAYOUT  
 REVISIONS 6: 09-09-05 REVISIONS TO LAYOUT  
 REVISIONS 7: 09-16-05 REVISIONS TO LAYOUT  
 REVISIONS 8: 02-20-06 REVISIONS TO LAYOUT

SHEET 3 OF 5



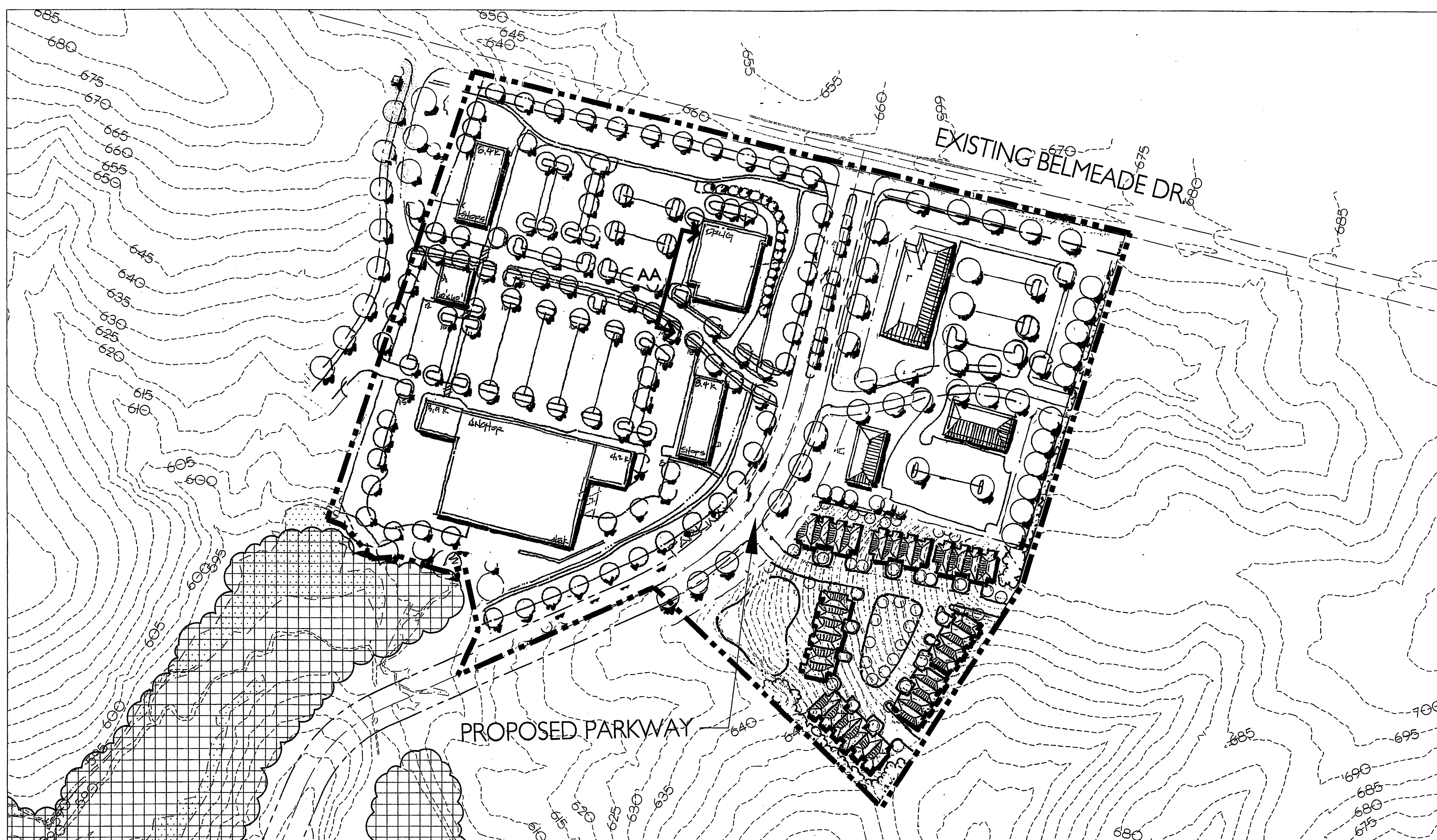


NEIGHBORHOOD SERVICE DISTRICT- OPTION A



AA PRIVATE-RETAIL ROAD  
RZ-3 SECTION

SCALE: NTS



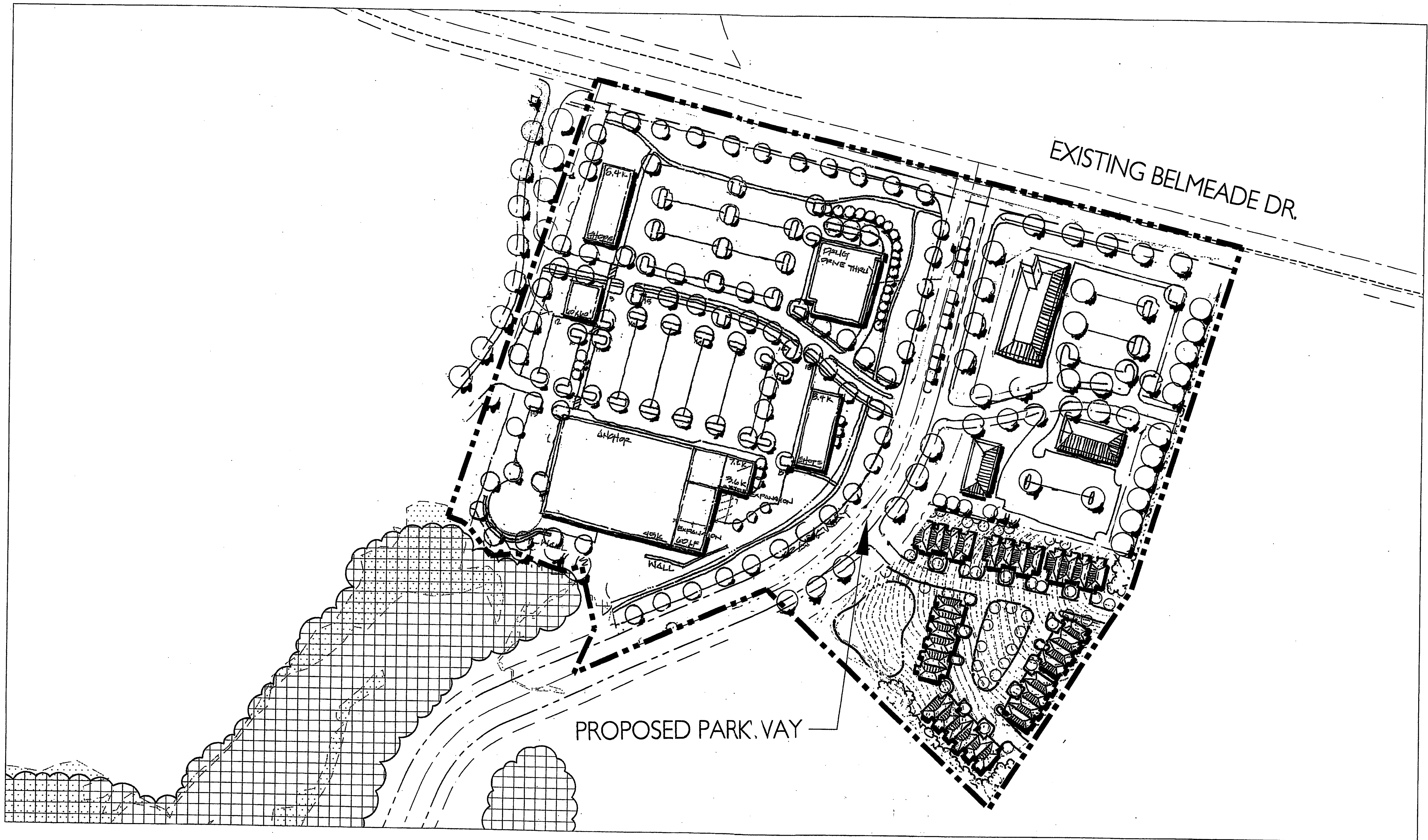
NEIGHBORHOOD SERVICE DISTRICT- OPTION B

PETITION NUMBER: 2005-077  
02/25/05 JOB NO. 1004227

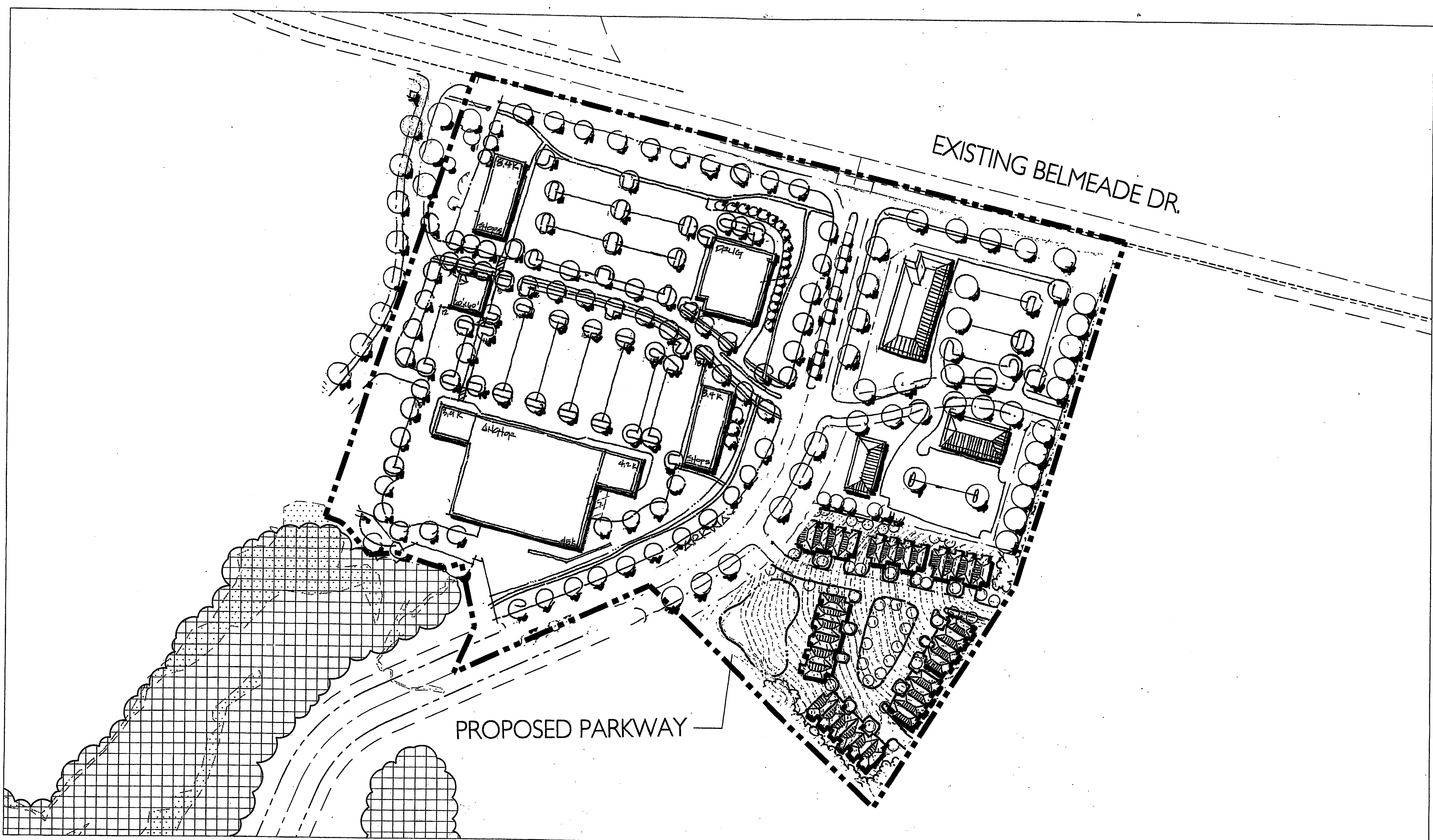
WHITEWATER - REZONING PETITION  
NEIGHBORHOOD SERVICE SITE PLANS  
CHARLOTTE, NORTH CAROLINA

REVISIONS 1: 4-20-05 REVISIONS PER STAFF REVIEW IEW  
REVISIONS 2: 5-20-05 REVISIONS PER STAFF REVIEW IEW  
REVISIONS 3: 06-20-05 PUBLIC MEETING JNS  
REVISIONS 4: 07-05-05 REMOVED STREET SECTIONS  
REVISIONS 5: 08-04-05 REVISIONS TO LAYOUT  
REVISIONS 6: 09-09-05 REVISIONS TO LAYOUT  
REVISIONS 7: 09-16-05 REVISIONS TO LAYOUT  
REVISIONS 8: 02-20-06 REVISIONS TO LAYOUT

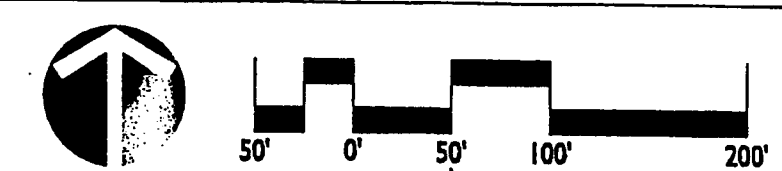




NEIGHBORHOOD SERVICE DISTRICT- OPTION C



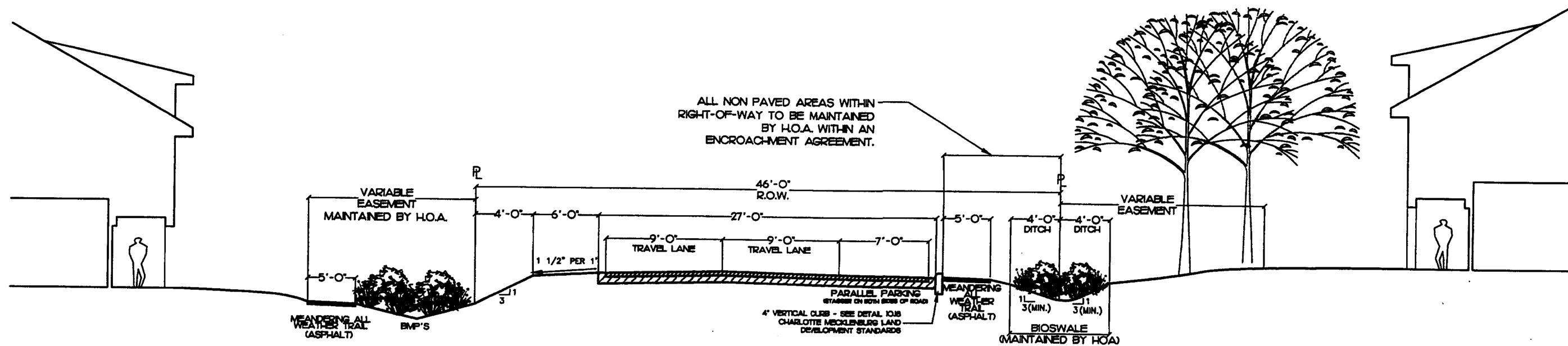
NEIGHBORHOOD SERVICE DISTRICT- OPTION D



PETITION NUMBER: 2005-077  
02/25/05 JOB NO. 1004227

WHITEWATER - REZONING PETITION  
NEIGHBORHOOD SERVICE SITE PLANS  
CHARLOTTE, NORTH CAROLINA

F REVISIONS 1: 4-20-05 REVISIONS PER STAFF REVIEW EW  
F REVISIONS 2: 5-20-05 REVISIONS PER STAFF REVIEW EW  
F REVISIONS 3: 06-20-05 PUBLIC MEETING JNS  
F REVISIONS 4: 07-05-05 REMOVED STREET SECTIONS JNS  
F REVISIONS 5: 08-04-05 REVISIONS TO LAYOUT JNS  
F REVISIONS 6: 09-09-05 REVISIONS TO LAYOUT JNS  
F REVISIONS 7: 09-16-05 REVISIONS TO LAYOUT JNS  
F REVISIONS 8: 02-20-06 REVISIONS TO LAYOUT JNS



NOTES:  
 1. THE CROWN (TRANSVERSE SLOPE) FOR THE TYPICAL SECTION ON THIS SHEET IS 3/8" PER FT.

**EE** GREEN STREAM SECTION (PUBLIC OR PRIVATE STREET)  
 46' PUBLIC R.O.W- WITH INFORMAL PARKING (LOCAL RESIDENTIAL STREET)

TYPICAL GREEN STREAM CROSS SECTION

FIGURE 1