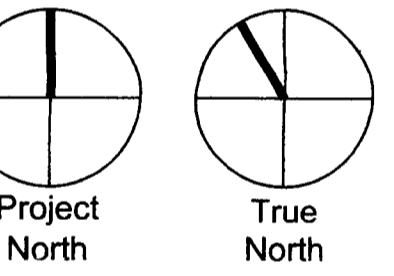




**NOT FOR CONSTRUCTION**

MEMBERS OF THE AMERICAN INSTITUTE OF ARCHITECTS  
 COPYRIGHT 2007 ALL RIGHTS RESERVED  
 PRINTED ON ELECTRONIC DRAWINGS AND  
 DOCUMENTATION MAY NOT BE REPRODUCED  
 IN ANY FORM WITHOUT WRITTEN PERMISSION  
 FROM LS3P ASSOCIATES LTD.

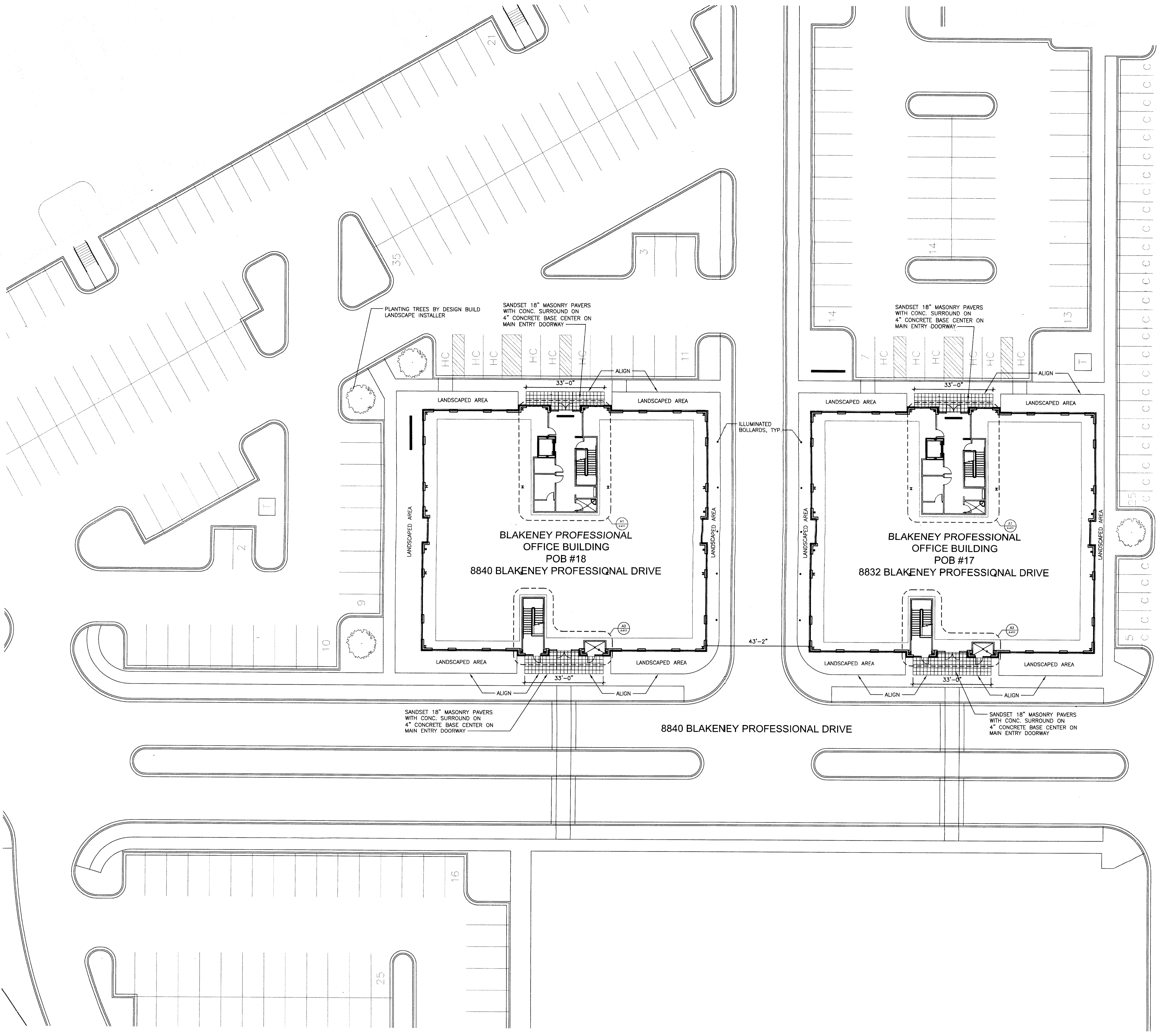
REVISIONS:  
**CONSTRUCTION DOCUMENTS**



PROJECT: 9102-062300  
 DATE: 03.01.07  
 DRAWN BY: JTB  
 CHECKED BY: JBK

ARCHITECTURAL  
 SITE PLAN  
 APPROVAL  
 DATE: *March 1, 2007*  
 BY: DEBRA D. CAMPBELL  
 2006-161  
**AS102**

SOLUTIONS THROUGH LISTENING  
 SERVICE BY DESIGN



**A1** ARCHITECTURAL SITE PLAN  
 1/16"=1'-0"

**CHARLOTTE - MECKLENBURG  
 PLANNING COMMISSION**  
 INTER - OFFICE COMMUNICATION

TO: Gary Huss  
 Zoning Coordinator

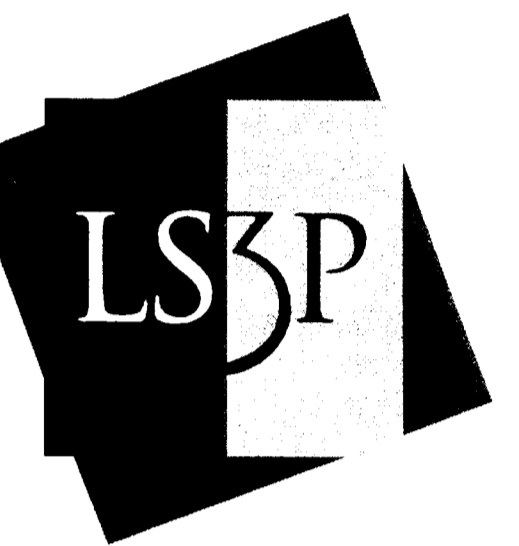
DATE: March 1, 2007

FROM: Debra Campbell  
 Planning Director

**SUBJECT:** Administrative Approval for Petition No. 2006-161, Crosland

As required in the Conditional Plan for Crosland the Staff of the Charlotte-Mecklenburg Planning Commission has reviewed the elevations for buildings 17 and 18 and found that they meet the requirements as outlined in the Conditional Plan. Attached are specific elevations. Since these elevations meet the intent of the conceptual Plan, I am administratively approving these elevations for Crosland. Please use these elevations when evaluating requests for building permits and certificates of occupancy.

**This site must still meet all other requirements as outlined in the City of Charlotte Zoning Ordinance.**



**LS3P ASSOCIATES LTD.**  
227 WEST TRADE STREET SUITE 700  
CHARLOTTE, NORTH CAROLINA 28202  
TEL. 704.333.6686 FAX 704.333.2926  
WWW.LS3P.COM

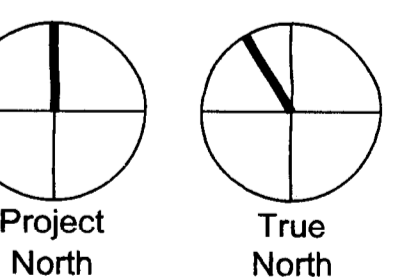


**NOT FOR CONSTRUCTION**

MEMBERS OF THE AMERICAN INSTITUTE OF ARCHITECTS  
COPYRIGHT 2007 ALL RIGHTS RESERVED  
PRINTED OR ELECTRONIC DRAWINGS AND DOCUMENTATION MAY NOT BE REPRODUCED IN ANY FORM WITHOUT WRITTEN PERMISSION FROM LS3P ASSOCIATES LTD.

REVISIONS:

**CONSTRUCTION DOCUMENTS**



PROJECT: 9102-062300  
DATE: 03.01.07  
DRAWN BY: JTB  
CHECKED BY: JBK

**EXTERIOR ELEVATIONS**

ATTACHED TO ADMINISTRATIVE

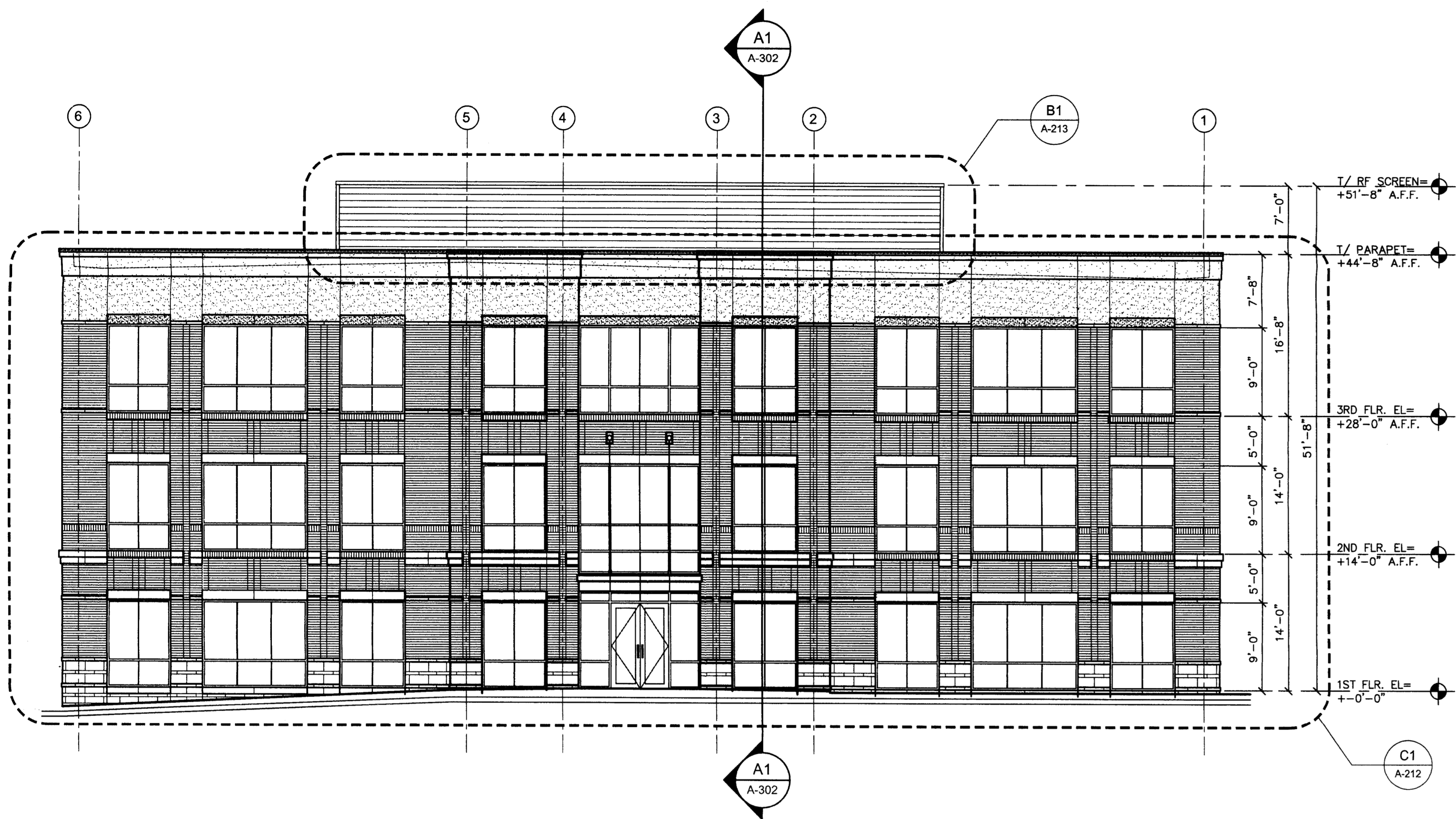
DATE: *March 2007*

BY: DEBRA D. CAMPBELL

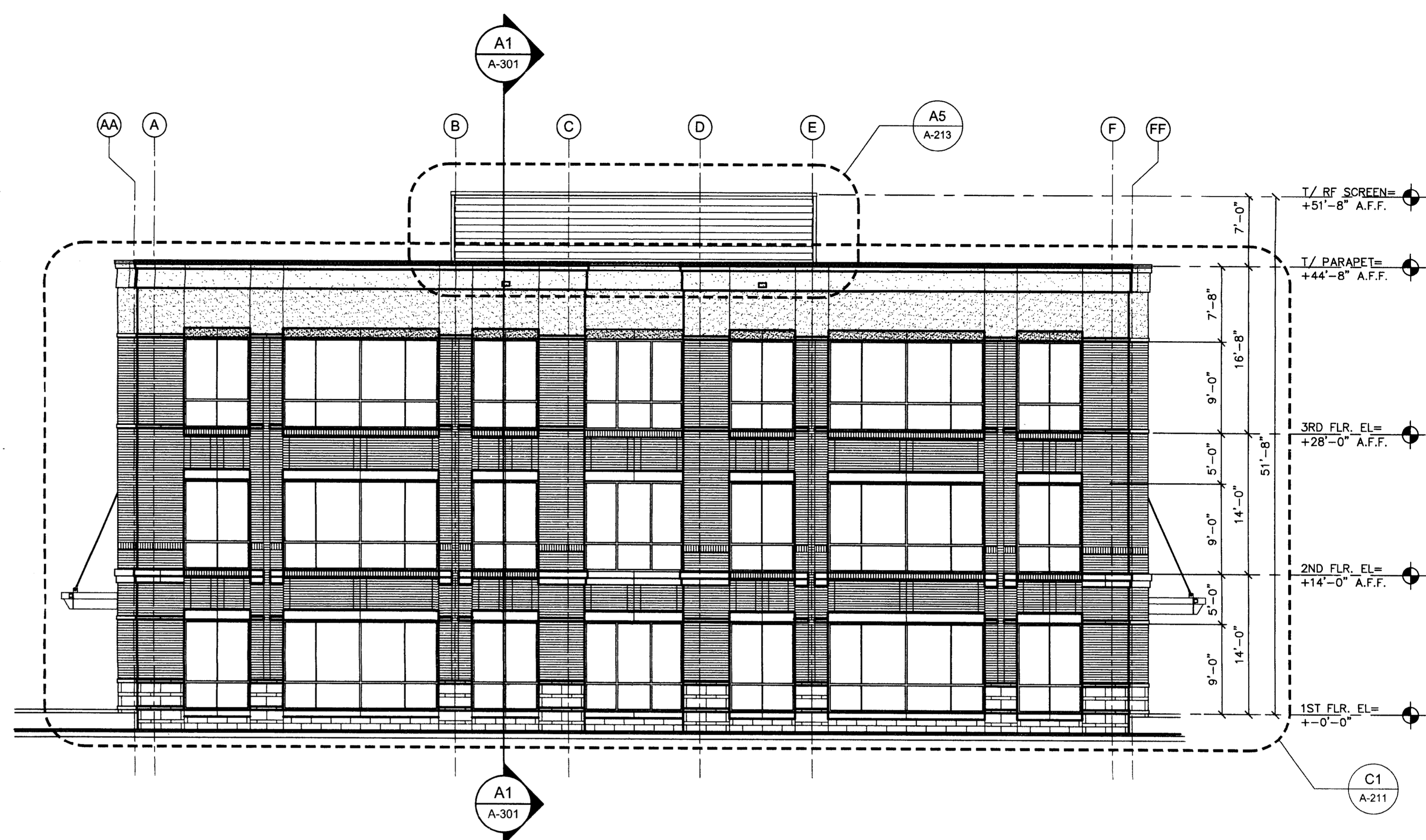
**A-201**

2006-161

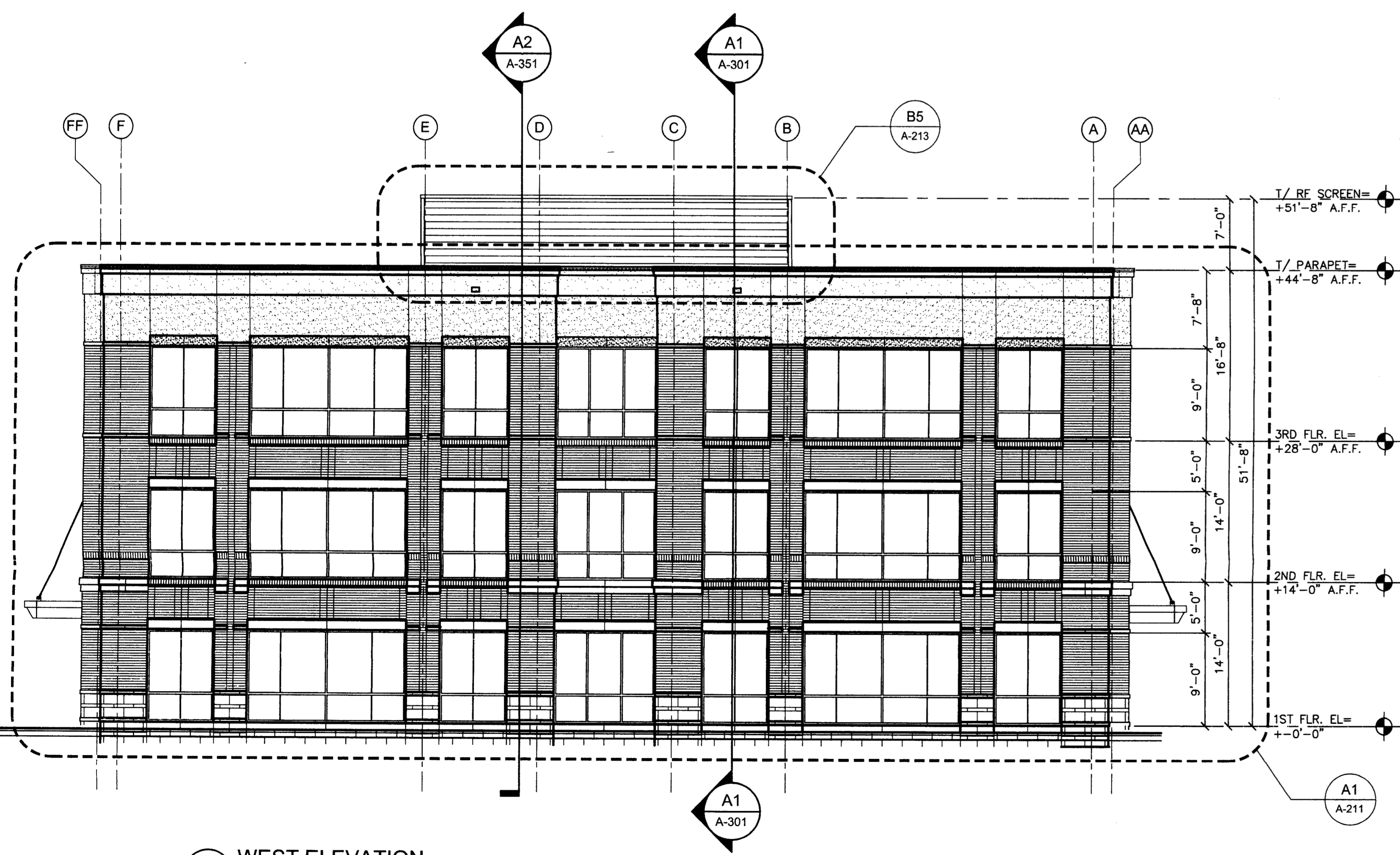
SOLUTIONS THROUGH LISTENING  
SERVICE BY DESIGN



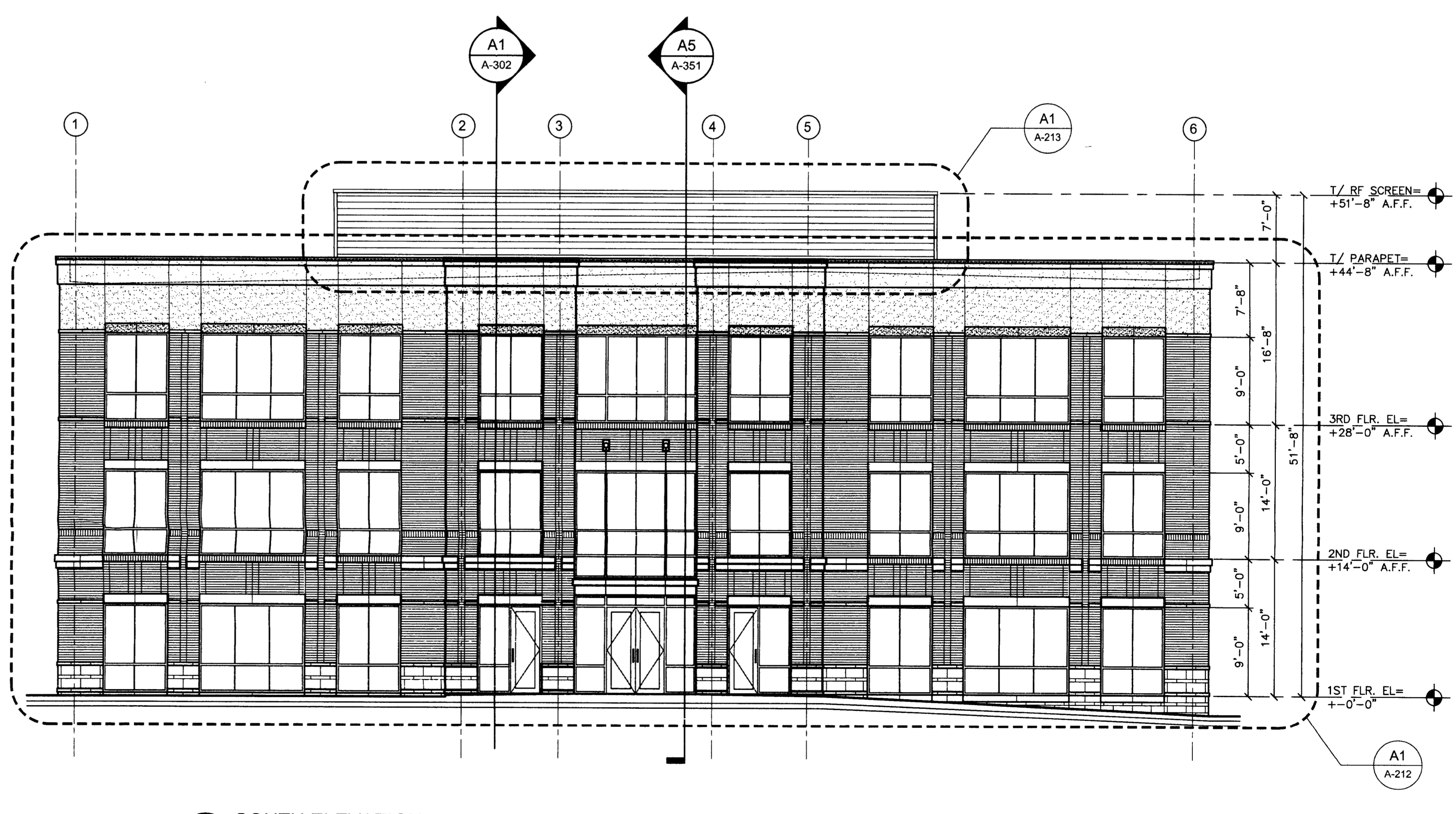
**C1 NORTH ELEVATION**  
1/8"=1'-0"



**C4 EAST ELEVATION**  
1/8"=1'-0"



**A1 WEST ELEVATION**  
1/8"=1'-0"



**A4 SOUTH ELEVATION**  
1/8"=1'-0"