

Petition #: **2008-069**

Petitioner: City of Charlotte

B-2(LLWPA), B-D, B-D(LLWPA), B-D(CD) (LLWPA), I-1, I-1(LLWPA), I-1(CD), I-2(CD), I-2(CD) (LLWPA), R-3, R-3(LLWPA), R-4(LLWPA) and R-MH(LLWPA)

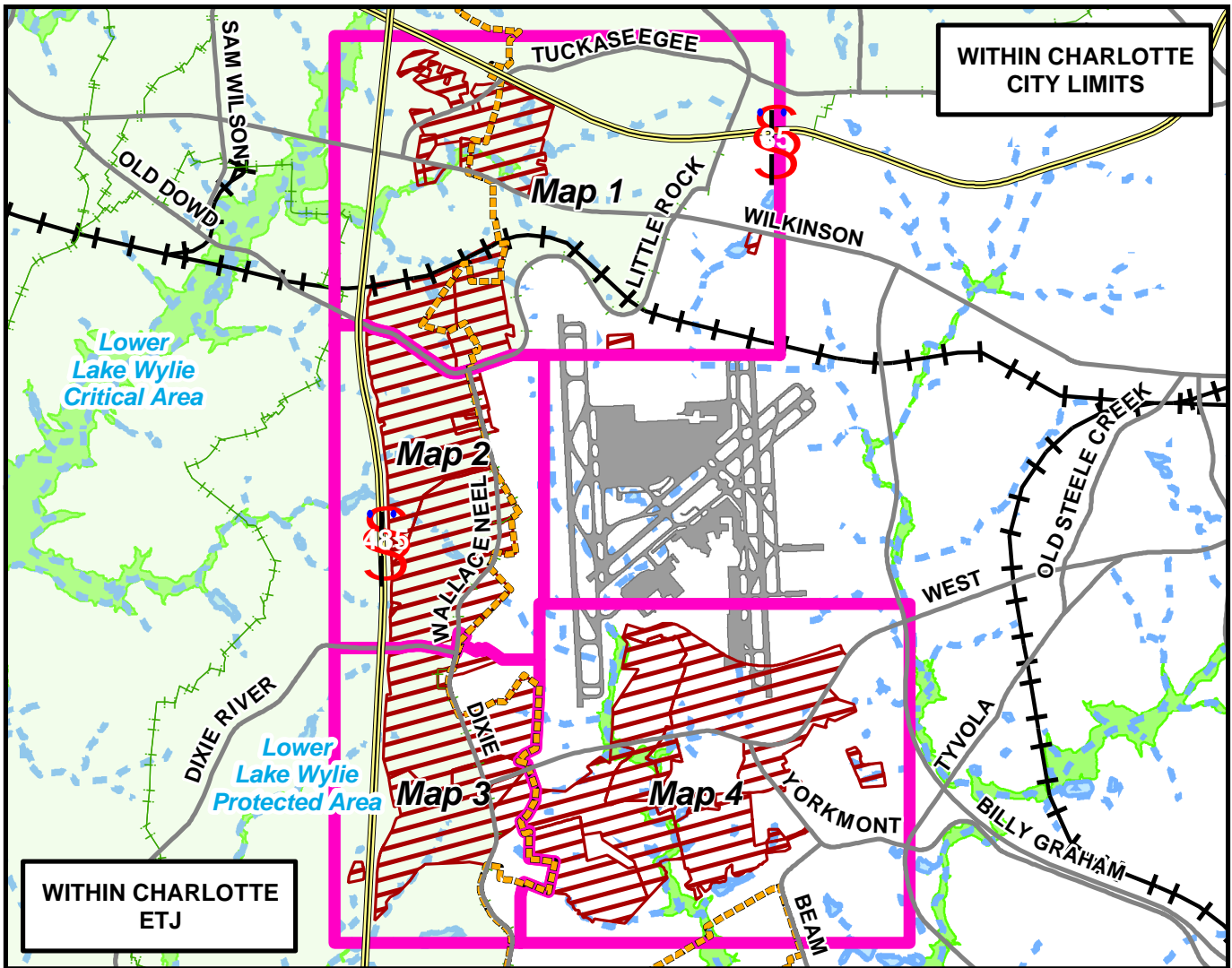
Zoning Classification (Existing):

(General Business, Lower Lake Wylie Protected Area; Distributive Business; Distributive Business, Lower Lake Wylie Protected Area; Distributive Business, Conditional, Lower Lake Wylie Protected Area; Light Industrial; Light Industrial, Lower Lake Wylie Protected Area; Light Industrial, Conditional; General Industrial, Conditional; General Industrial, Conditional, Lower Lake Wylie Protected Area; Single-Family Residential, up to 3 dwelling units per acre; Single-Family Residential, up to 3 dwelling units per acre, Lower Lake Wylie Protected Area; Single-Family Residential, up to 4 dwelling units per acre, Lower Lake Wylie Protected Area and Manufactured Housing, Lower Lake Wylie Protected Area)

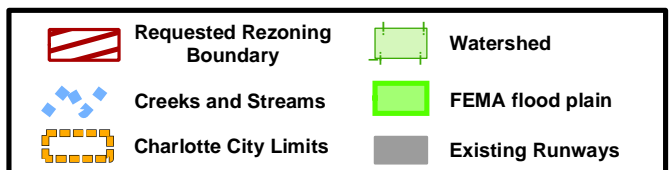
Zoning Classification (Requested): I-2 and I-2(LLWPA)

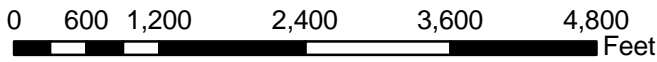
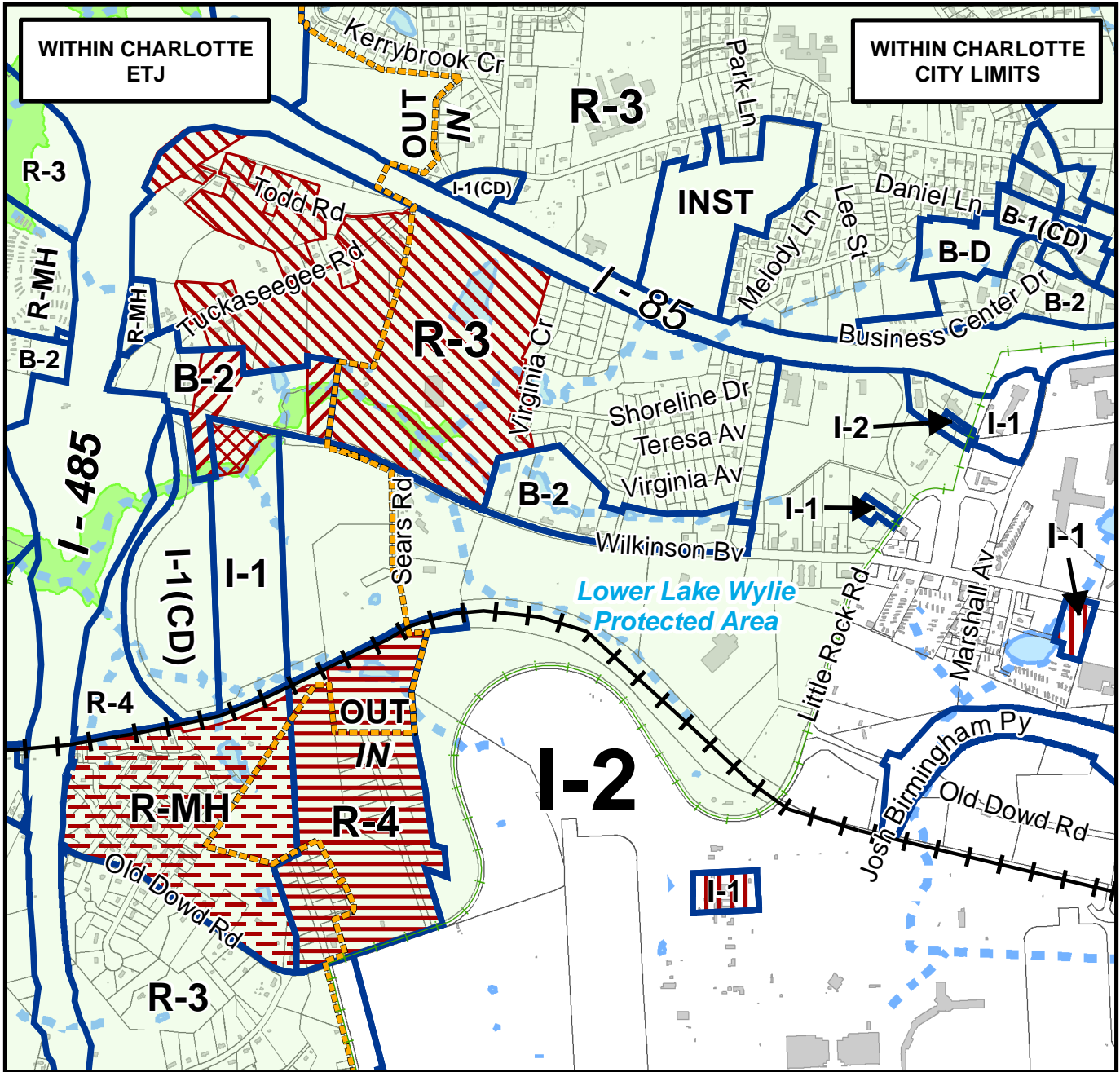
(General Industrial and General Industrial, Lower Lake Wylie Protected Area)

Acreeage & Location : Approximately 2,140.97 acres located along Wilkinson Blvd, Tuckasegee Rd, Little Rock Rd, Old Dowd Rd, Wallace Neal Rd, Dixie Rd and West Blvd.

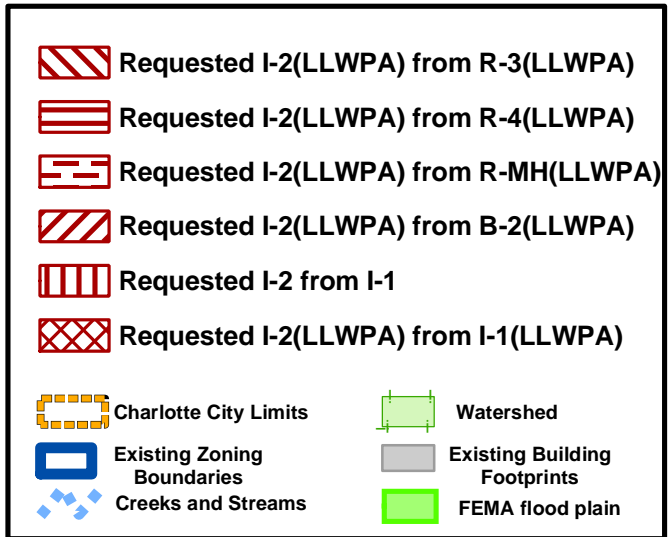


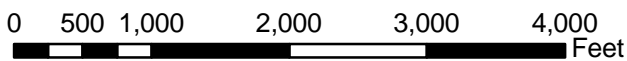
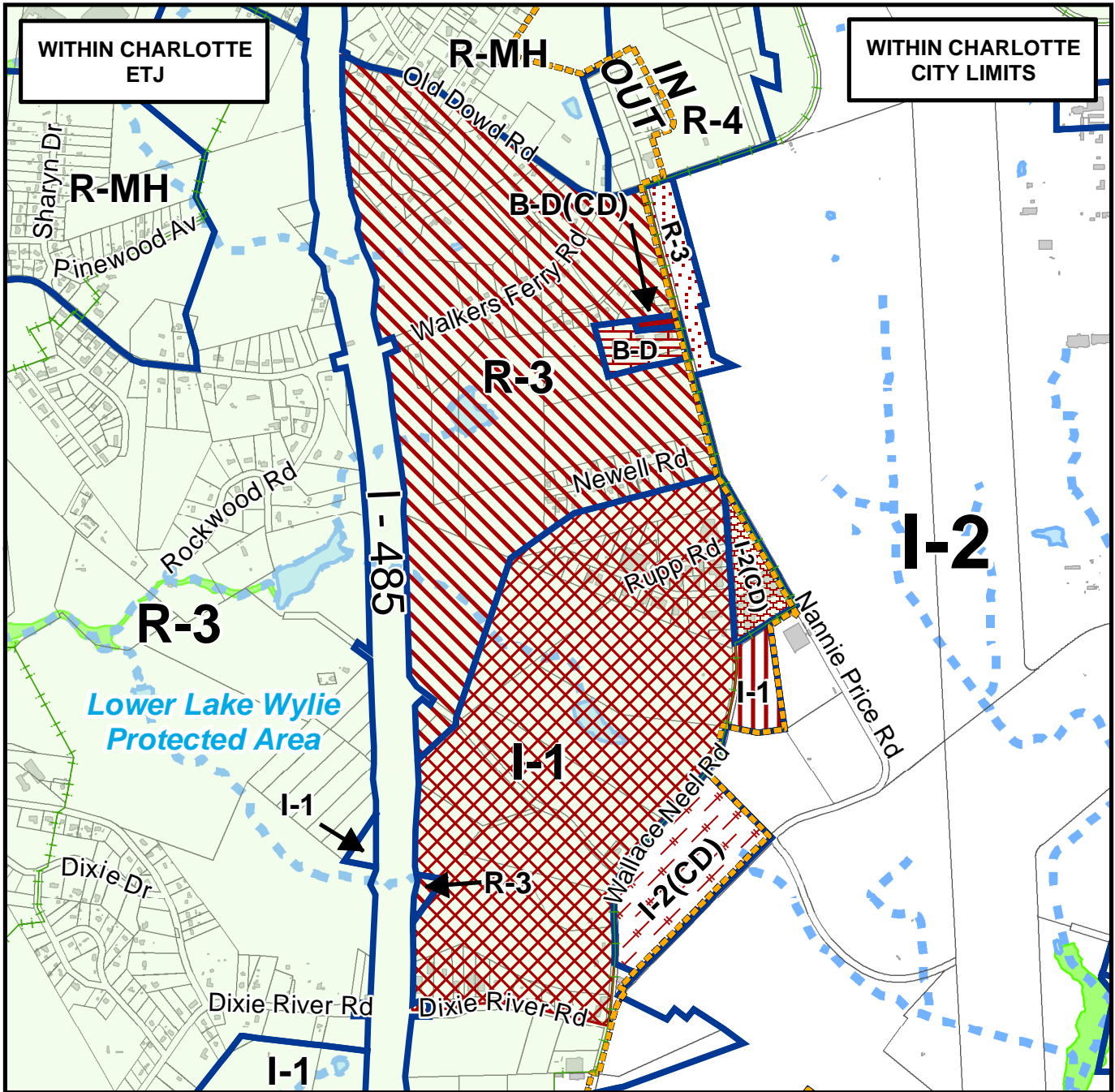
0 2,500 5,000 10,000 Feet



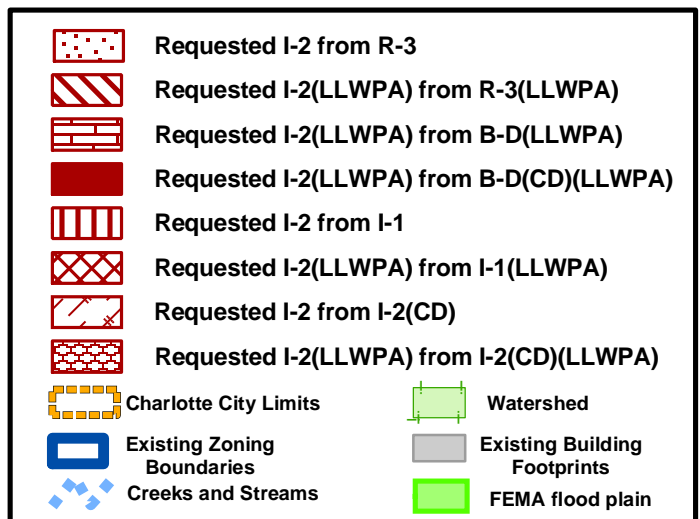


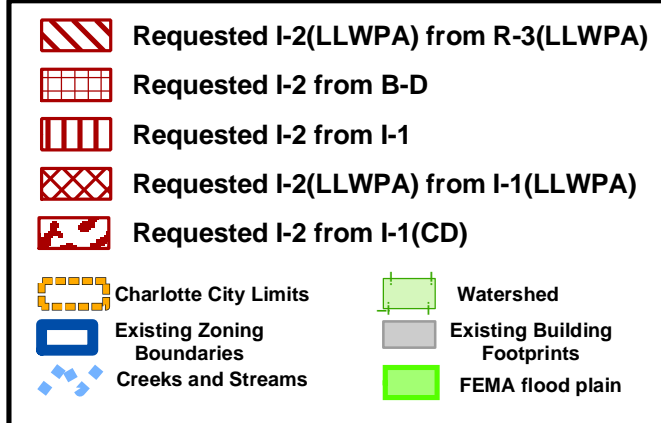
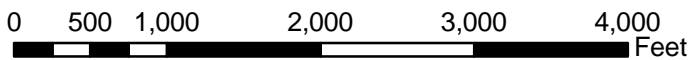
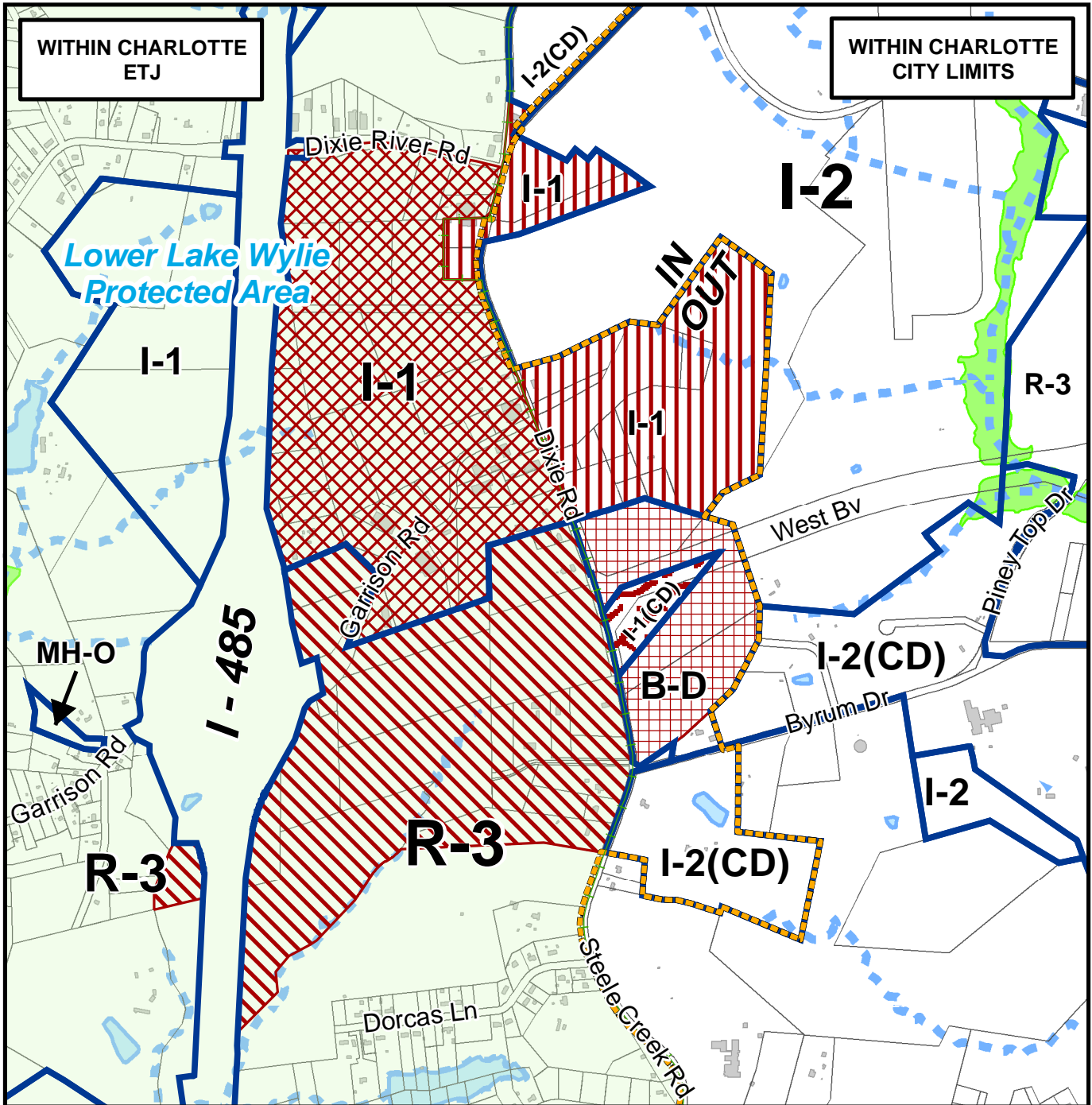
Zoning Map #(s) 85,86,105



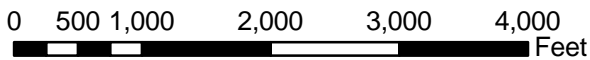
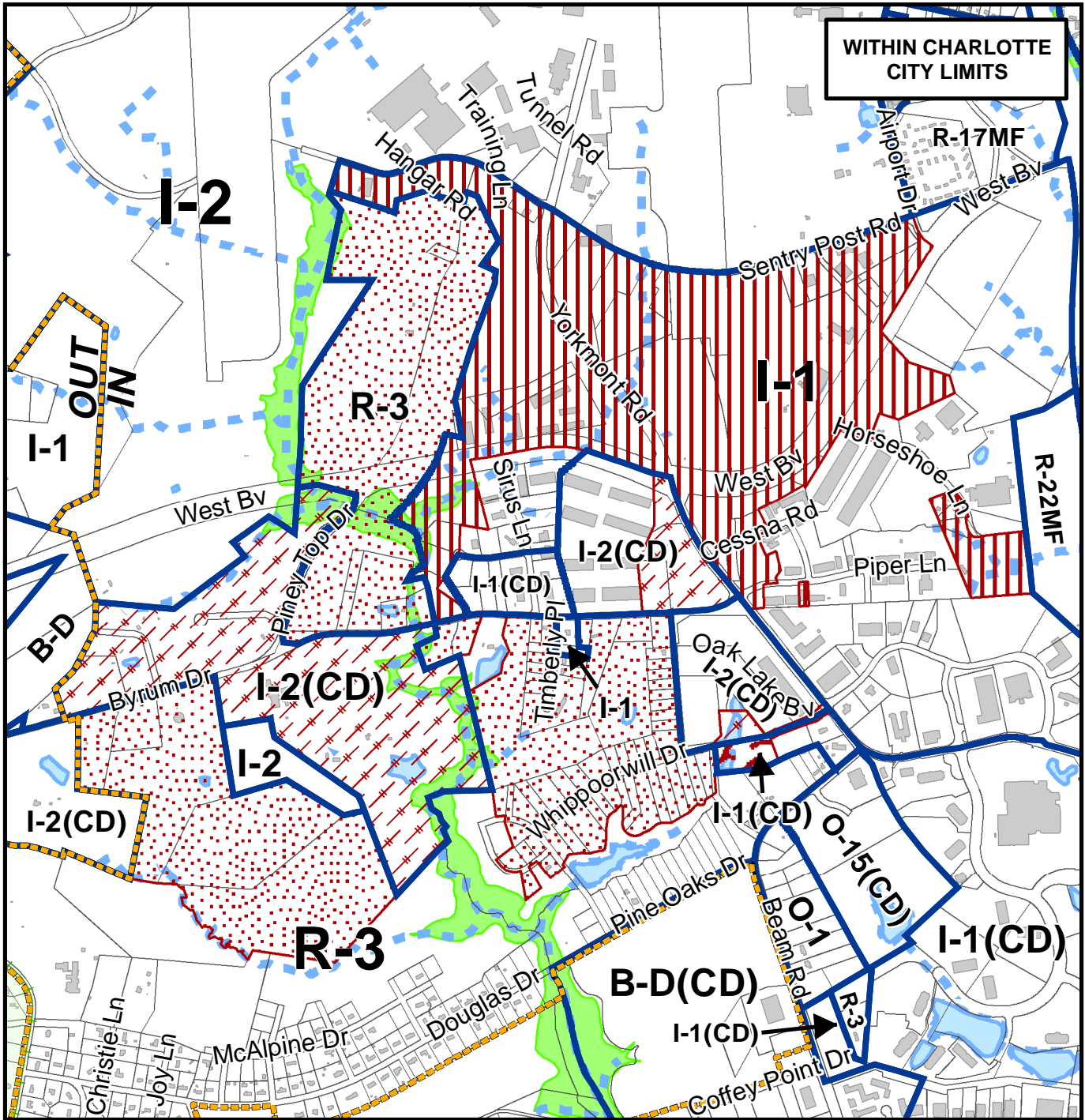


Zoning Map #(s) **105,108**





Zoning Map #(s) 108,128



Zoning Map #(s) 108,109,127,128

