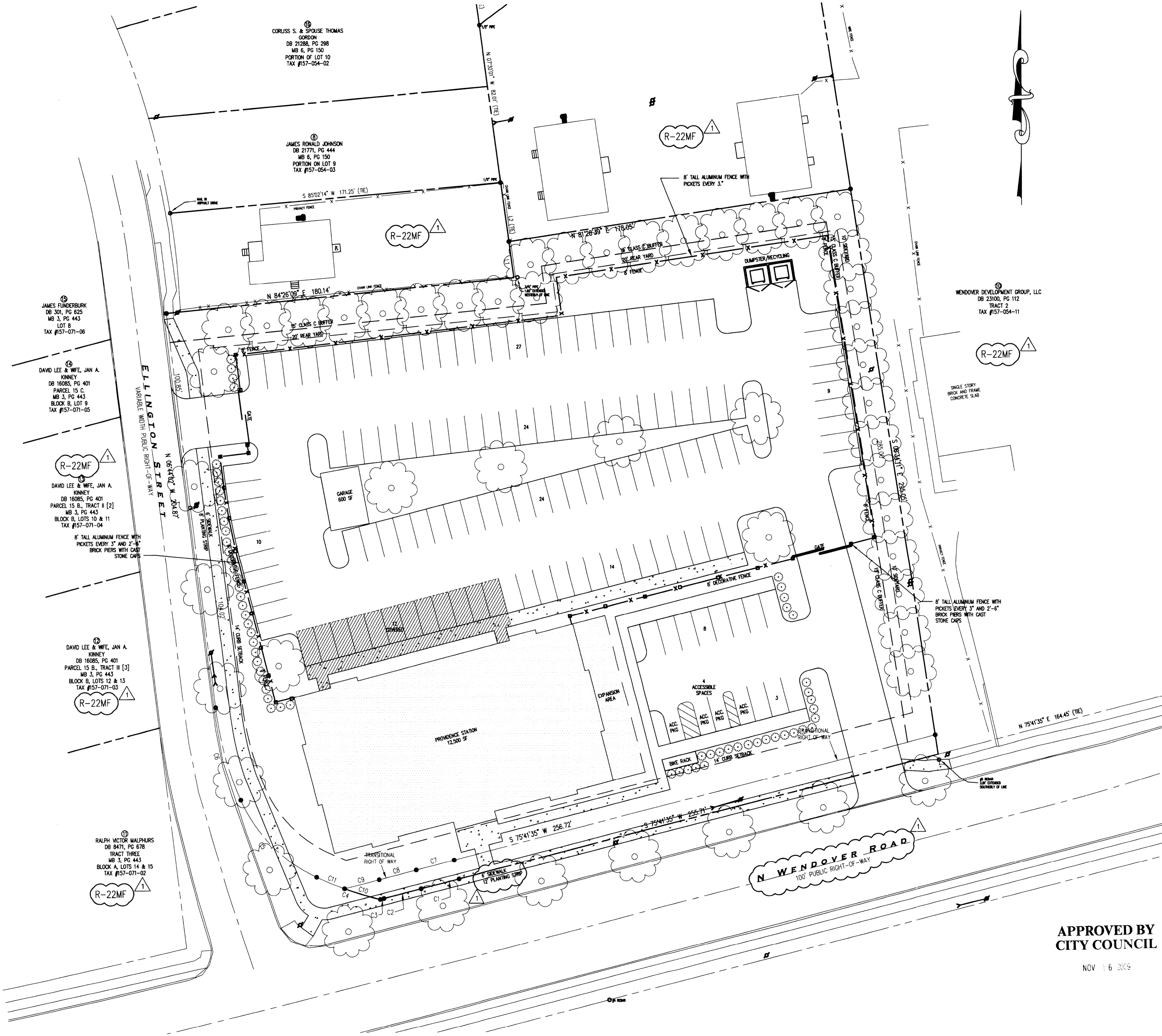


**AREA MAP**

**SITE DATA**

- APPROXIMATELY 2.5 ACRES
- EXISTING ZONING: R-22MF
- PROPOSED ZONING: NS (NEIGHBORHOOD SERVICES)
- PROPOSED USE: POLICE STATION (FUTURE EXPANSION TO 15,000SF)
- GARAGE AREA: 600SF
- ZONING BOUNDARIES:  
 FRONT = 10' TRANSITIONAL +14' NS = 24'  
 SIDE = 10' SIDE YARD  
 REAR = 20' REAR YARD
- PARKING: REQUIRED (1 / 600)=21 SPACES PROVIDED = 135 SPACES
- PROPOSED FAR = 0.14(INCLUDING EXPANSION)  
 MAXIMUM FAR = 2.0
- MAXIMUM BUILDING HEIGHT = 60'-0"

NOTE: ALL OUTDOOR FREESTANDING LIGHTING WILL HAVE FULL CUT OFF FIXTURES.



1 REZONING SITE PLAN 1"=25'-0"

**Creech & Associates**  
 127 W. Worthington Ave. Suite 206  
 Charlotte, NC 28203  
 p 704.376.6000  
 f 704.376.5550  
 w www.nwcarch.com

**CMPD Providence Division**

DATE: SEPTEMBER 19, 2009  
 REVISIONS:  
 1 REZONING COMMENTS OCTOBER 23, 2009

PROJECT NUMBER 2009-012

APPROVED BY CITY COUNCIL  
 NOV 16 2009

2009-073  
 SITE PLAN

AS-1

2009-073

APPROVED BY  
CITY COUNCIL

NOV 16 2009



Charlotte-Mecklenburg Police Department



 Creech & Associates  
ARCHITECTURAL DESIGN

10.12.2009