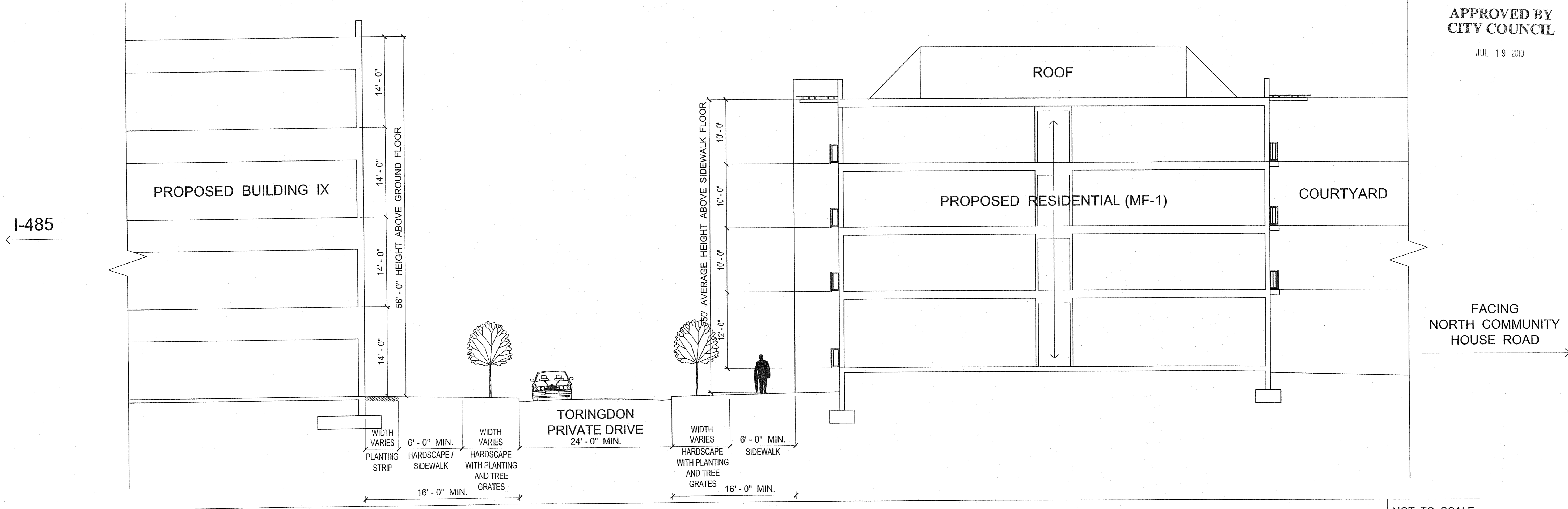


DEVELOPMENT CROSS - SECTIONS

APPROVED BY
CITY COUNCIL

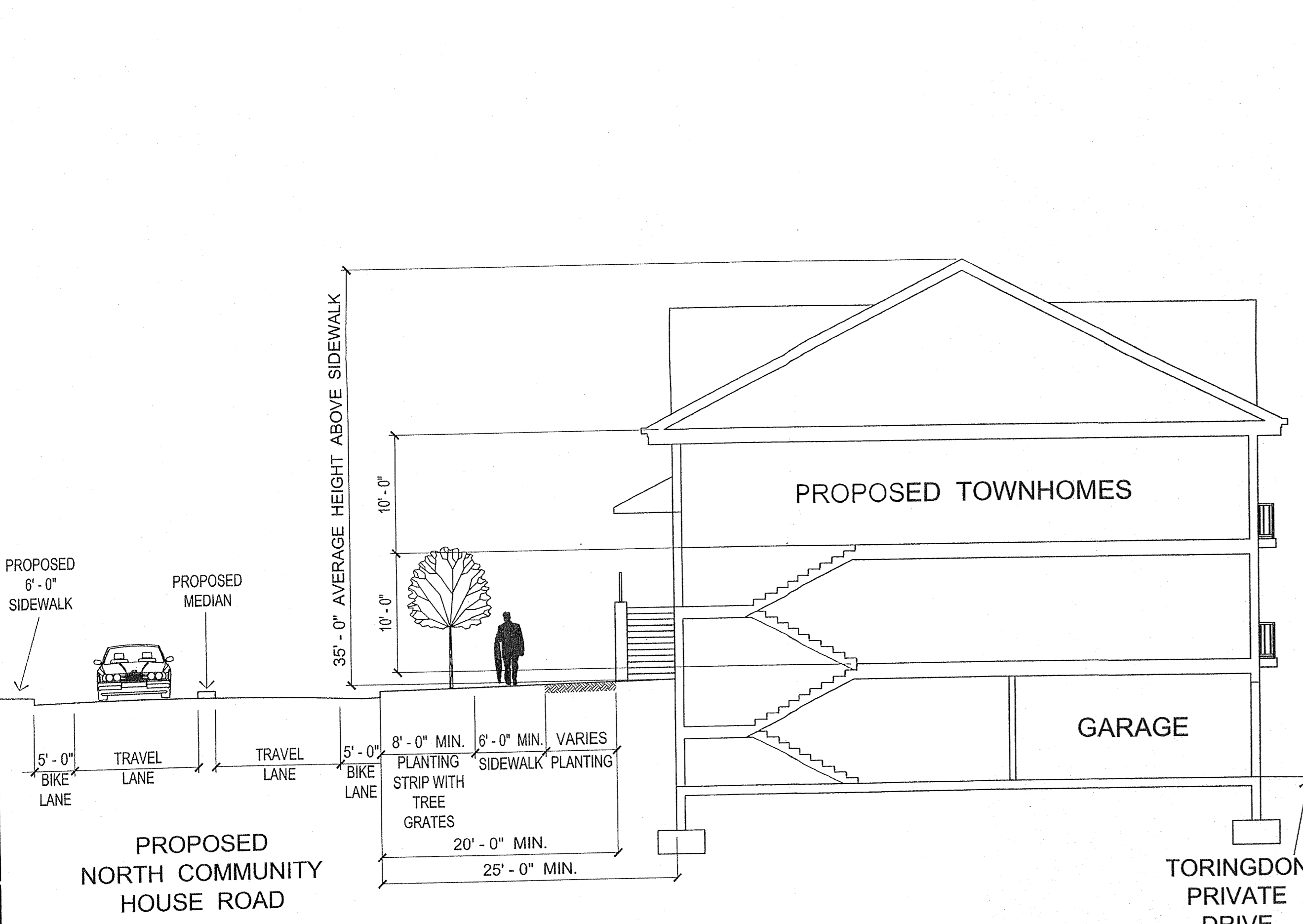
JUL 19 2010

Dewberry & Davis, Inc.
6135 LAKEVIEW ROAD
SUITE 400
CHARLOTTE, NC 28209-2609
PHONE: (704) 509-9918
FAX: (704) 509-9937



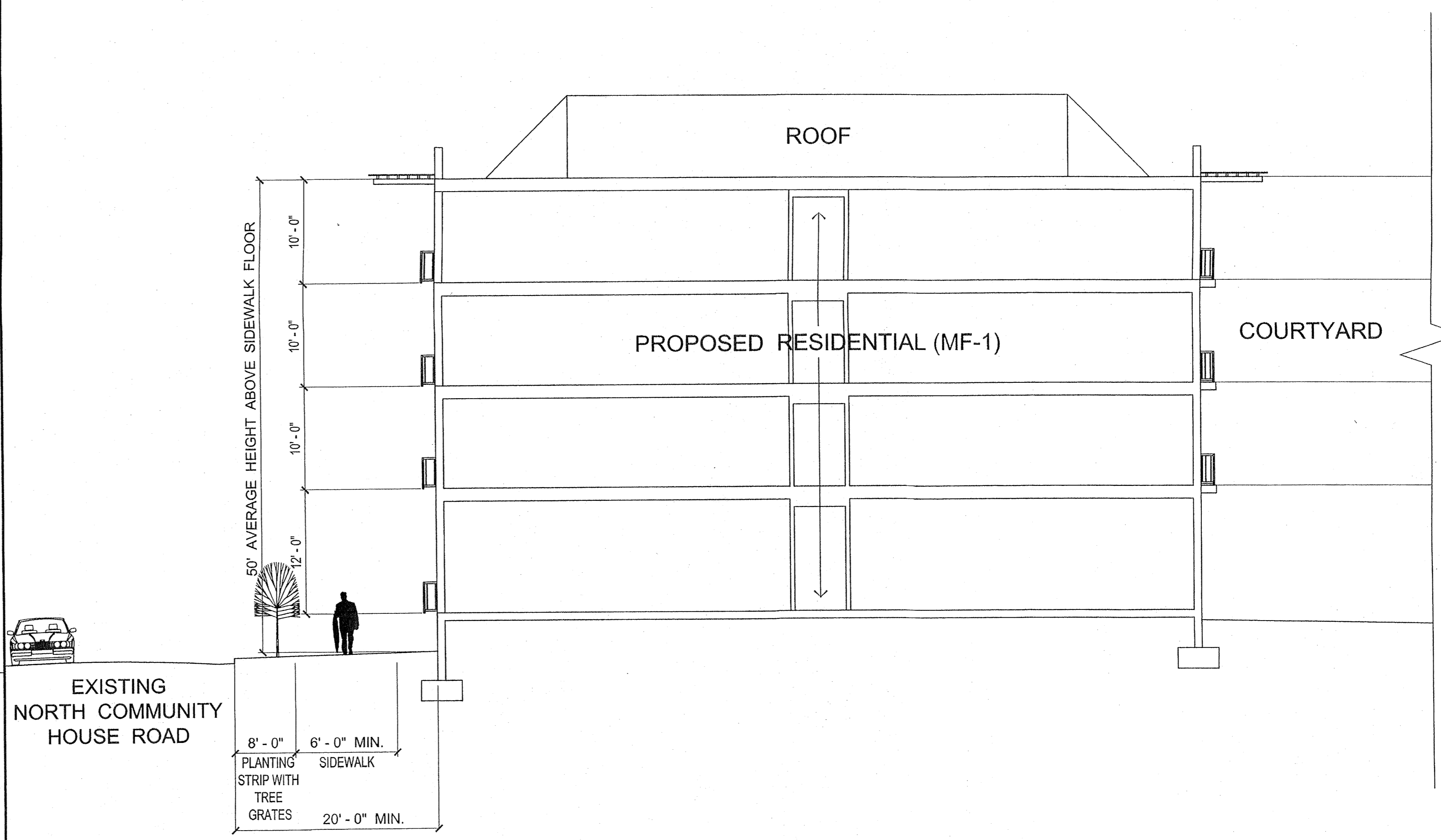
SECTION C - C

NOT TO SCALE



SECTION B - B

NOT TO SCALE



SECTION A - A

NOT TO SCALE

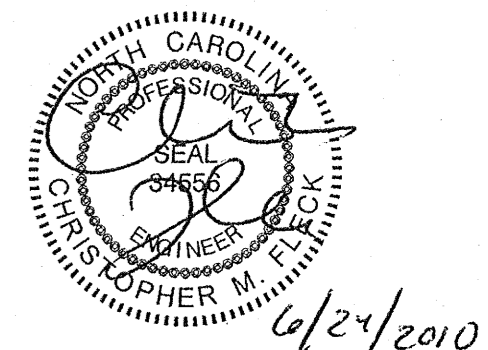
TORINGTON MIXED - USE DEVELOPMENT
(TORINGTON WAY)

OWNER : LICHTIN CORPORATION
3110 EDWARDS MILL ROAD
SUITE 200
RALEIGH, NORTH CAROLINA 27612
PHONE : (919) 783 - 6000
CHARLOTTE, NORTH CAROLINA
2010 REZONING PETITION PLANS

SEAL

REZONING
DOCUMENT
NOT FOR
CONSTRUCTION

SEAL



SCALE : NOTED

No.	Date	By	Description
1	05/14/2010	RAM	Revised per City Review

REVISIONS

DRAWN BY: CFC
APPROVED BY: ARV
CHECKED BY: CMF
DATE: 03 / 19 / 2010

TITLE
DEVELOPMENT
CROSS - SECTIONS
FOR PUBLIC
HEARING

PROJECT NO. 10001471

C3

SHEET NO.