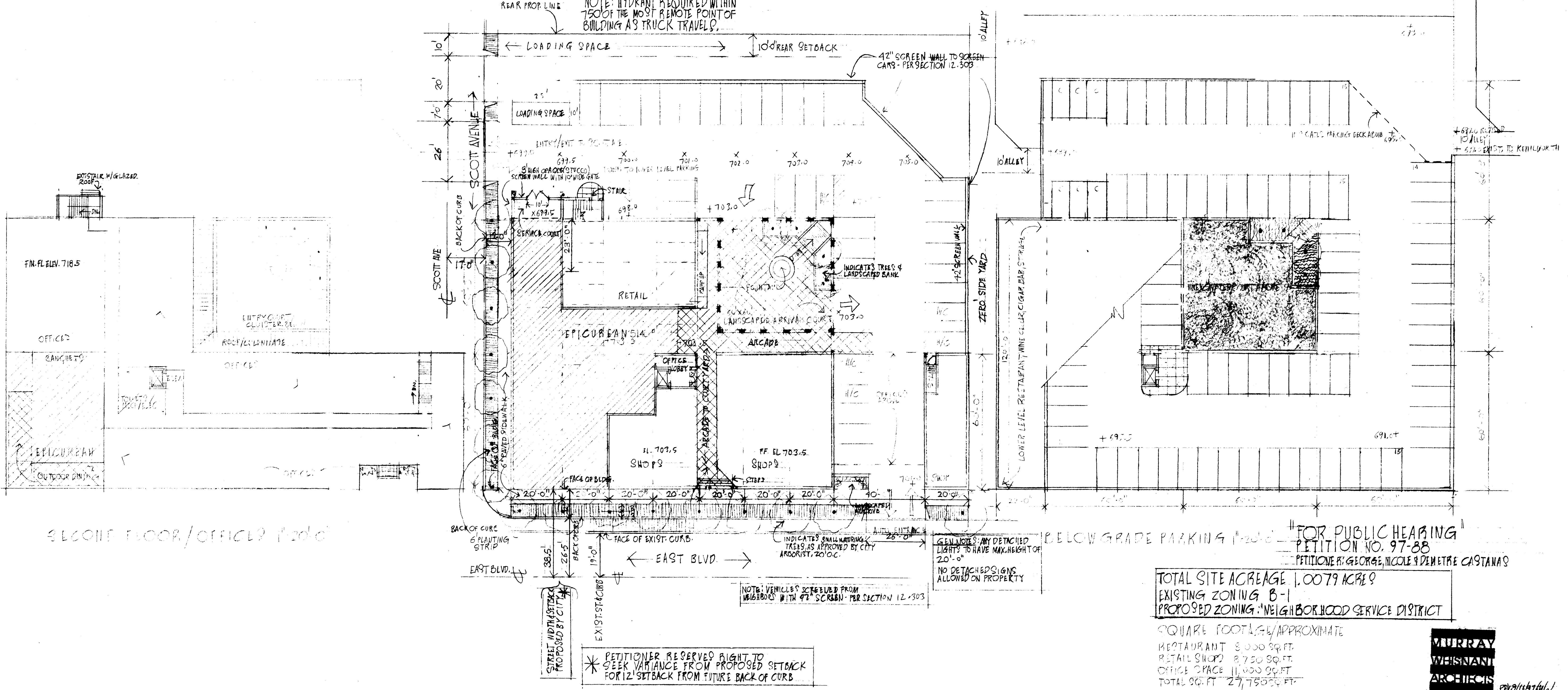


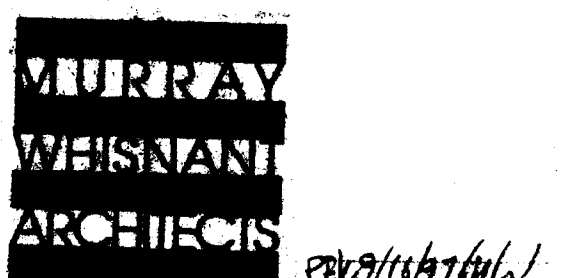
BUILDING SECTION/NORTH-SOUTH 1/8"=1'-0"

FIRE HYDRANT LOCATION 100'-0"
 NOTE: HYDRANT REQUIRED WITHIN 150' OF THE MOST REMOTE POINT OF BUILDING AS TRUCK TRAVEL.



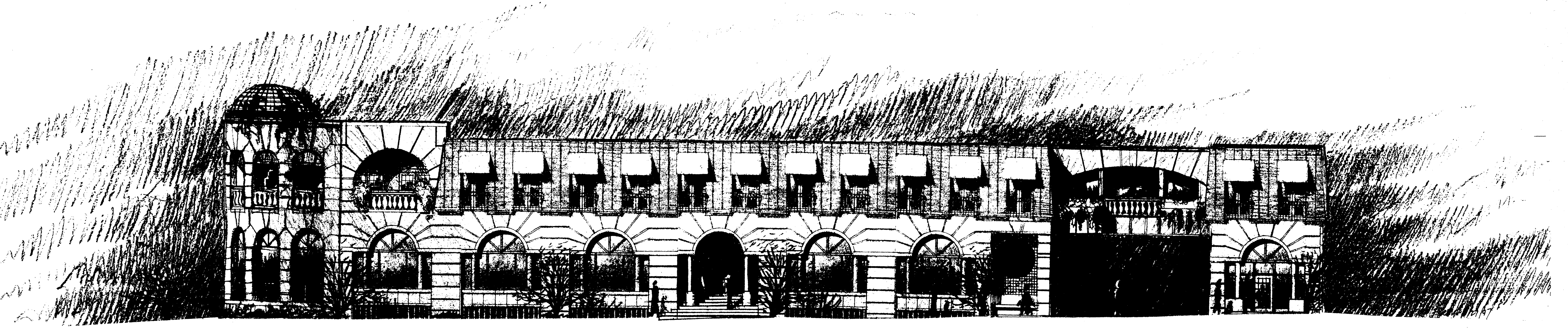
SCOTT AVENUE/OFFICE FLOOR

FOR PUBLIC HEARING
 PETITION NO. 97-88
 PETITIONER: GEORGE, NICOLE & DENISE CASTANO
 TOTAL SITE ACREAGE 1.0079 ACRES
 EXISTING ZONING B-1
 PROPOSED ZONING: NEIGHBORHOOD SERVICE DISTRICT
 SQUARE FOOTAGE APPROXIMATE:
 RESTAURANT 8,000 SQ. FT.
 RETAIL SHOP 8,750 SQ. FT.
 OFFICE SPACE 11,400 SQ. FT.
 TOTAL SQ. FT. 27,150 SQ. FT.
 120 PARKING SPACES APPROX.

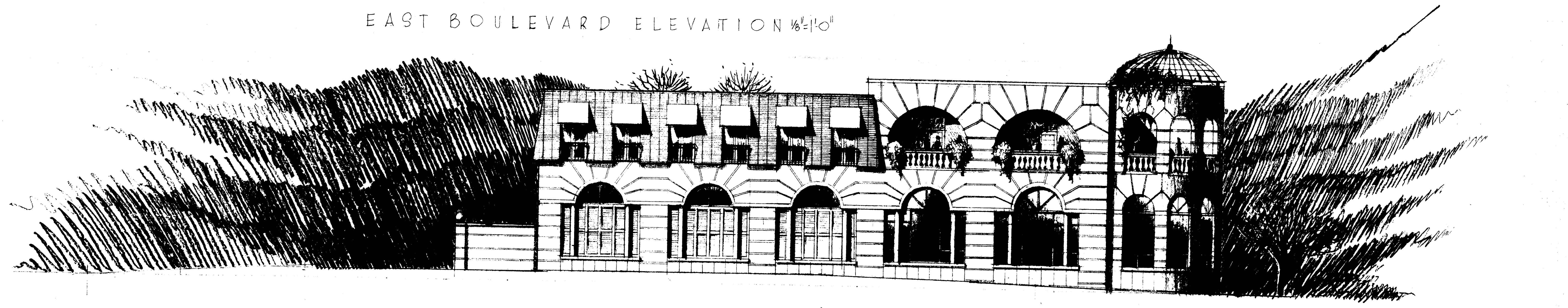


APPROVED BY CITY COUNCIL
 DATE 11/17/87

E P I C U R E A N C E N T E R



EAST BOULEVARD ELEVATION 1/8"=1'-0"



SCOTT AVENUE ELEVATION 1/8"=1'-0"



E P I C U R E A N C E N T E R