

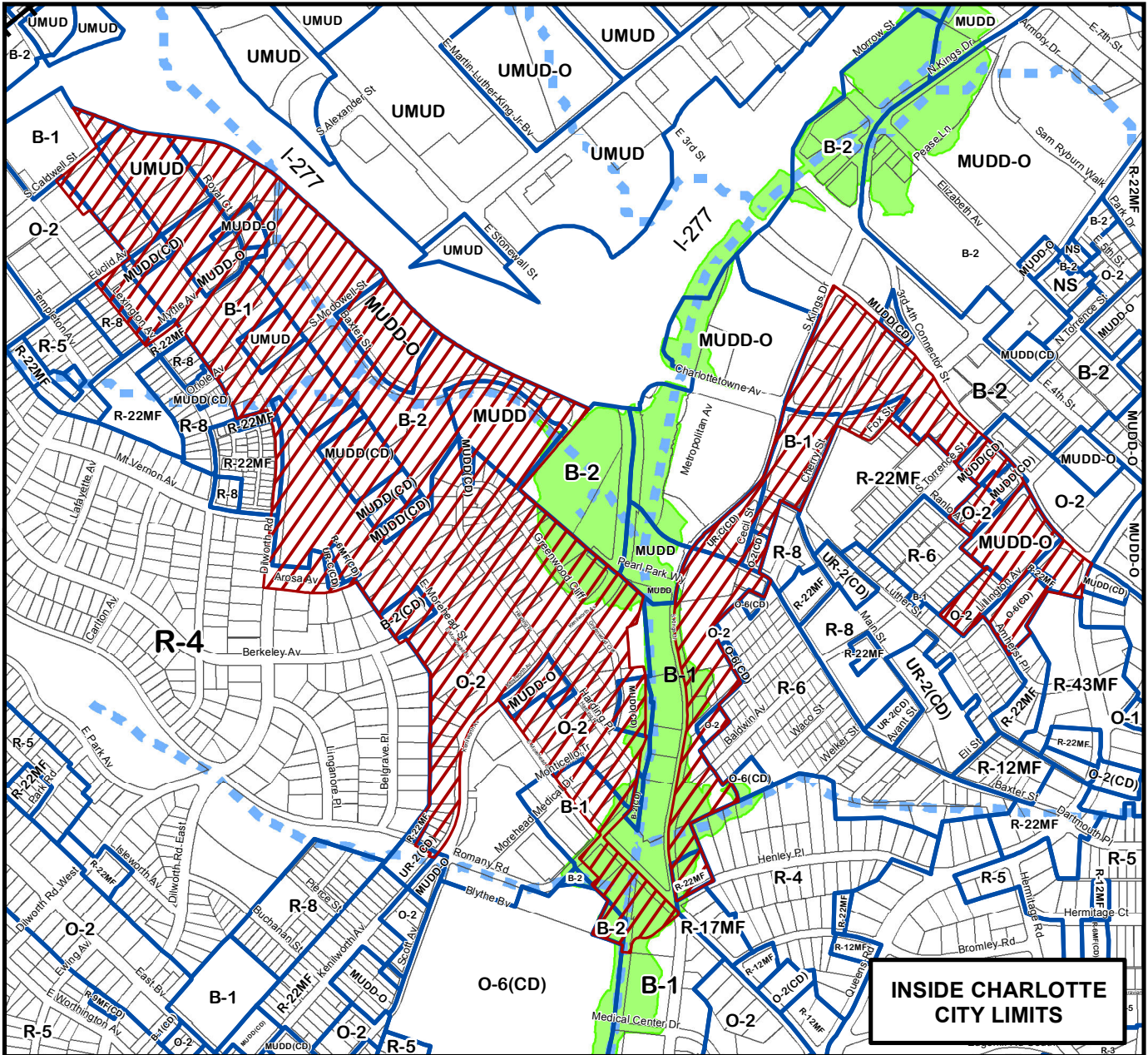
Petition #: **2012-050**

Petitioner: **Charlotte-Mecklenburg Planning Department**

Zoning Classification (Requested): **Establishment of a Pedestrian Overlay District**

(underlying zoning will remain unchanged)

Acreeage & Location: Approximately 374 acres located on the southwest side of I-277 beginning at Caldwell Street following south along Morehead Street then continuing north along North Kings Drive to East 3rd Street ending at Queens Road.



0 250 500 1,000 1,500 2,000 Feet

Zoning Map #(s) **158**



Map Produced by the
Charlotte-Mecklenburg Planning Department
3-30-2012

