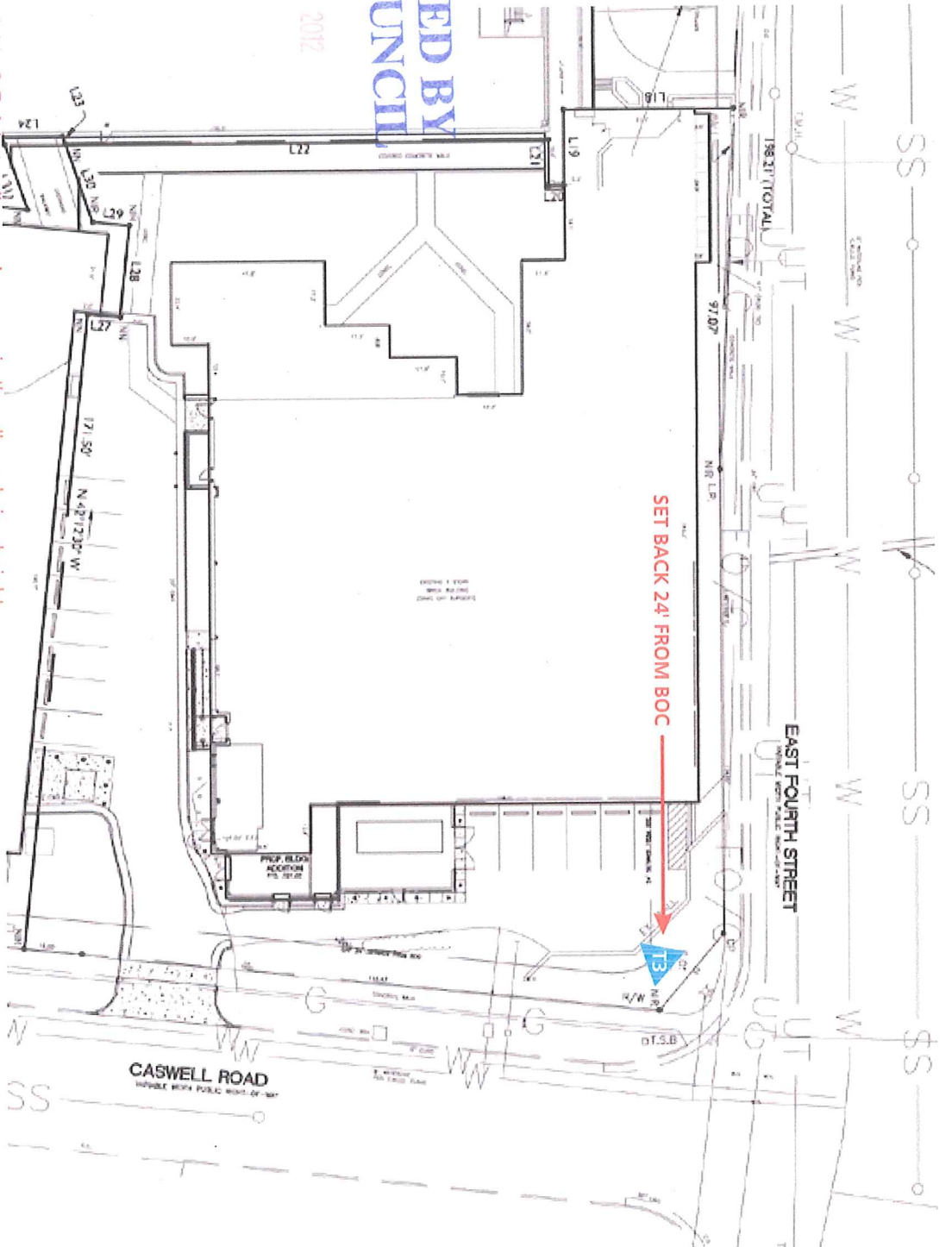


APPROVED BY
CITY COUNCIL

JUL 16 2012



1. The purposed of this S.P.A is to allow an increase in the allowed sign height and sign Square footage.
2. All other conditions and optional provisions with petition 2007-076 still apply to the subject property.

SITE MAP
SIGN T3



RP SIGNS
3108 Monroe Road
Charlotte, N.C. 28205
Ph: 704.344.8552 Fax: 704.375.8081
www.rpsigns.net

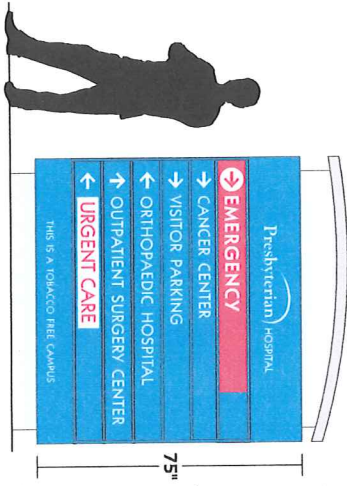
CUSTOMER: Presbyterian Medical Tower
LOCATION: 1800 E. 4th St. Charlotte, NC 28204
PROJECT: New Campus Signage - Exterior
CONTACT NAME: Joy Greear
EMAIL: ajgreear@novanthealth.org

DATE: 3/20/12
QUOTE #:
DRAWN BY: SP

All ideas, designs and arrangements expressed on this drawing are the exclusive property of Rr Sign Systems until purchased and any reproduction or use without written consent is prohibited.



EXISTING

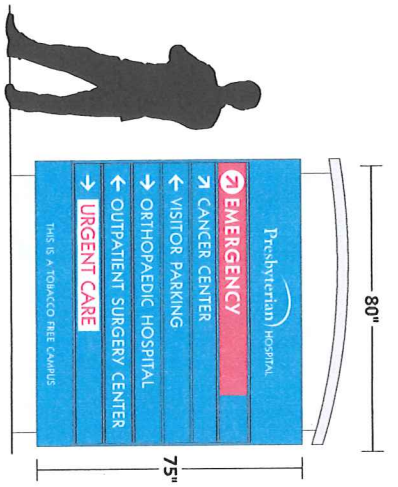


SIDE A

41.67 SQ. FT. FACE



EXISTING

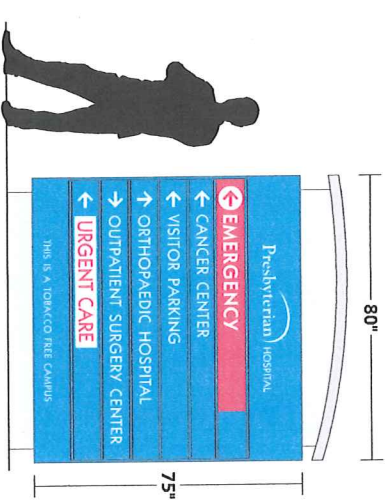


SIDE B

41.67 SQ. FT. FACE



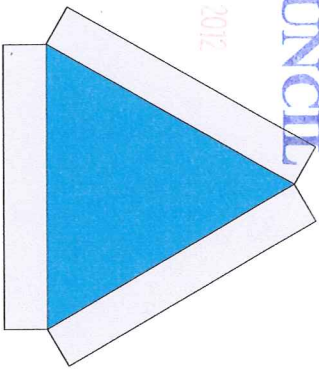
EXISTING



SIDE C

41.67 SQ. FT. FACE

APPROVED BY
CITY COUNCIL
JUL 16 2012



TOP VIEW



1. The purpose of this S.P.A. is to allow an increase in the allowed sign height and sign square footage.

2. All other conditions & optional provisions with petition 2007-076 still apply to the subject property.

95" HIGH x 80" WIDE

LED INTERNALLY ILLUMINATED, 41.67 SQ. FT. FACE • THREE-SIDED



RP SIGNS

3108 Monroe Road
Charlotte, N.C. 28205
Ph: 704.344.8552 Fax: 704.375.8081
www.rpsigns.net

CUSTOMER: Presbyterian Medical Tower

LOCATION: 1800 E. 4th St. Charlotte, NC 28204

PROJECT: New Campus Signage - Exterior

CONTACT NAME: Joy Greear

EMAIL: ajgreear@novanhealth.org

DATE: 3/21/12

QUOTE #:

DRAWN BY: SP

All ideas, designs and arrangements expressed on this drawing are the exclusive property of RP Sign Systems until purchased and any reproduction or use without written consent is prohibited.