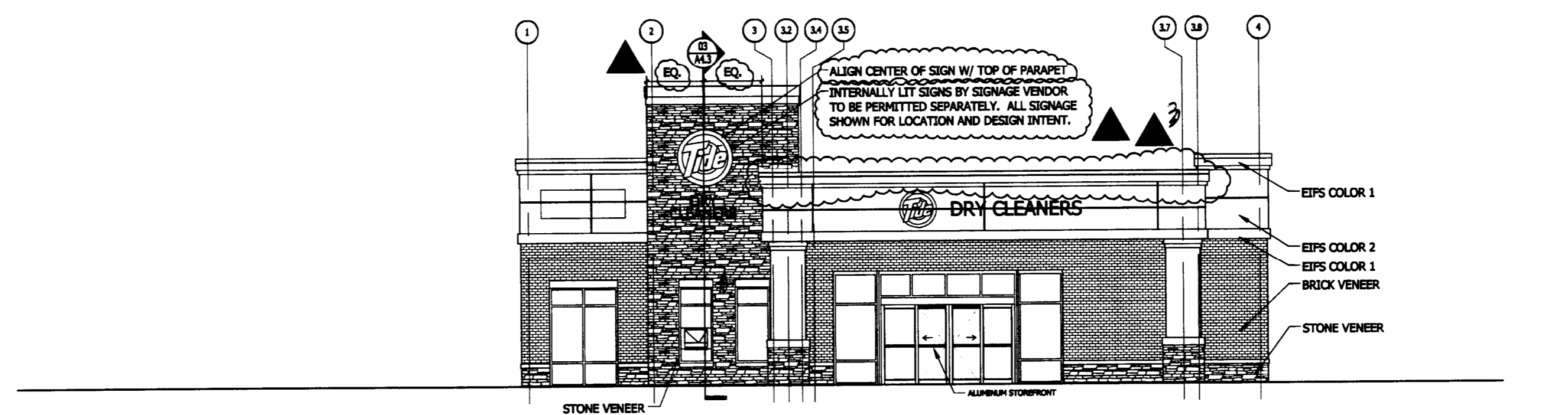
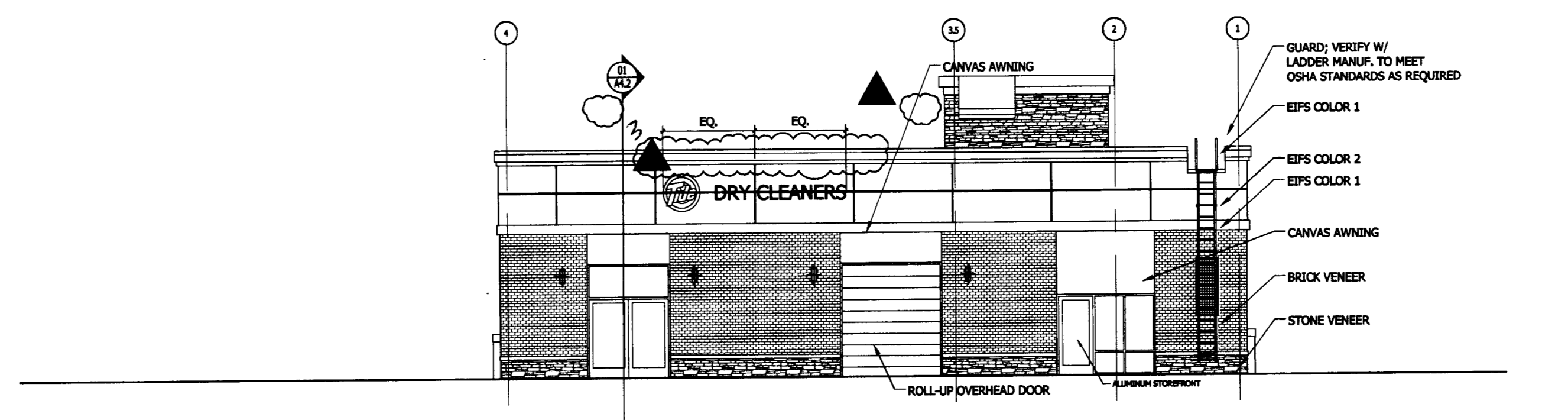


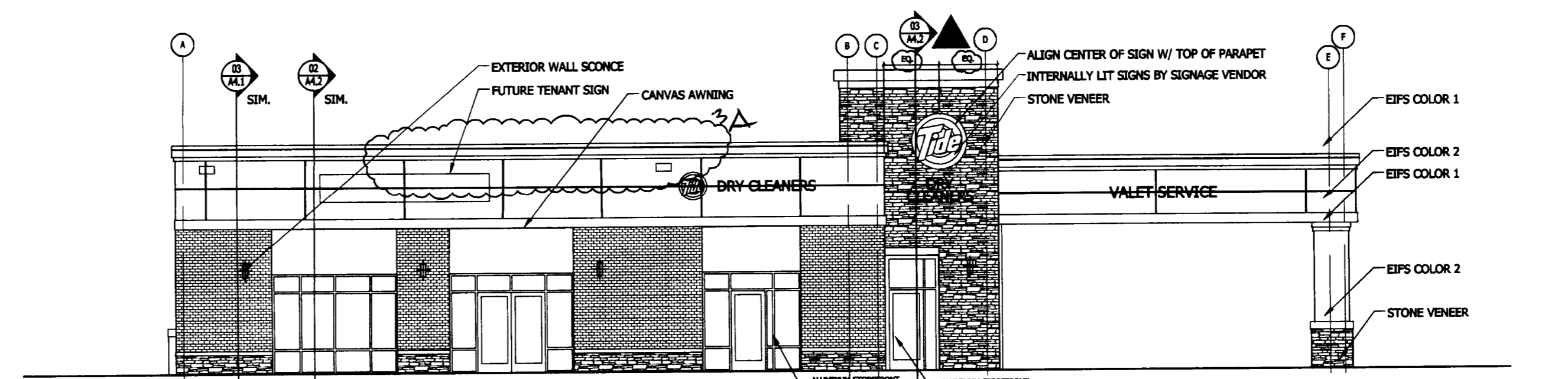
TAG VENTURES, LLC



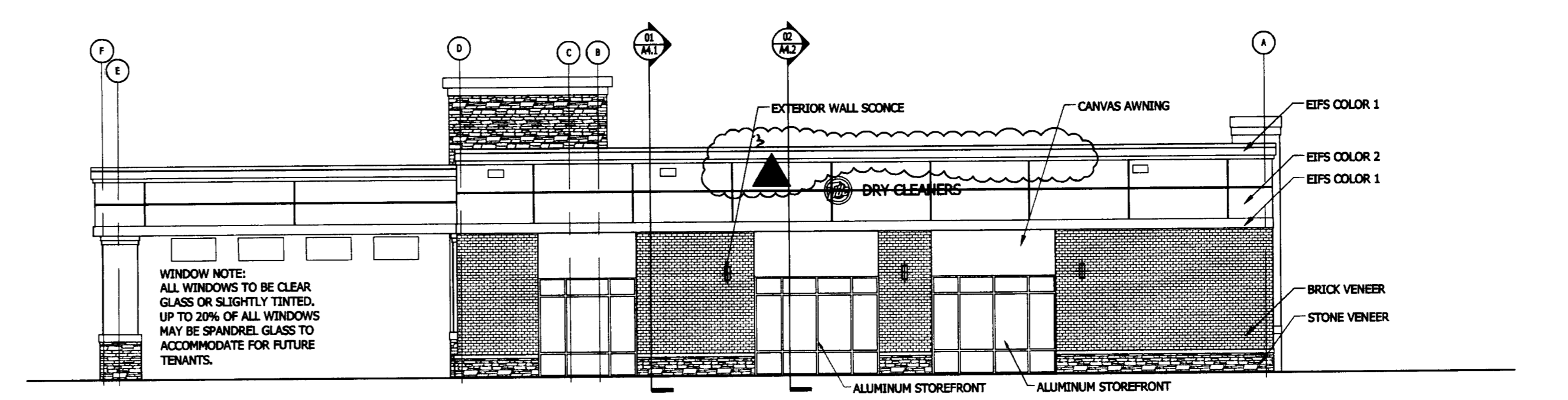
04 FRONT ELEVATION 1/8" = 1'-0"



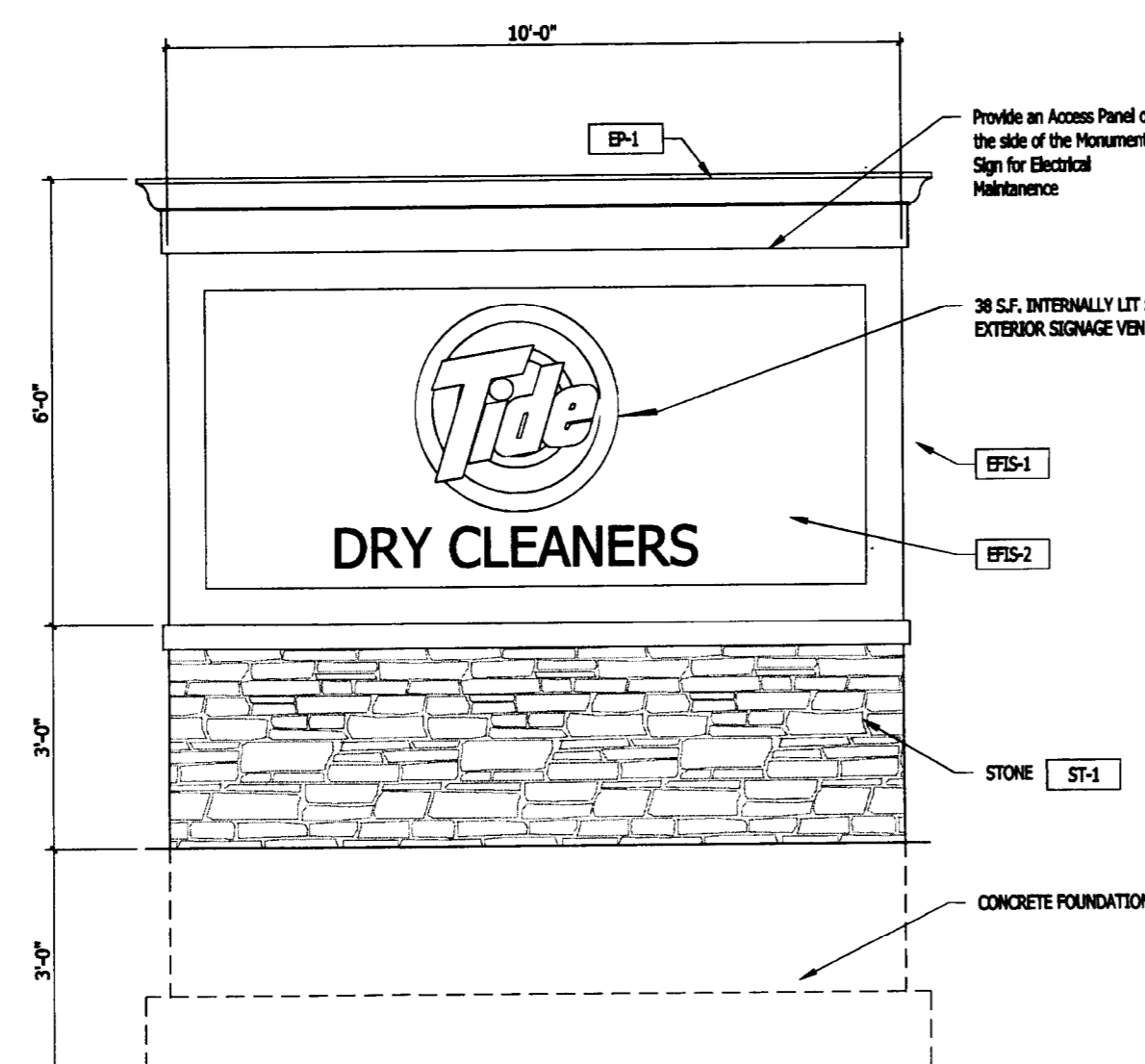
03 REAR ELEVATION 1/8" = 1'-0"



02 SIDE ELEVATION 1/8" = 1'-0"



01 SIDE ELEVATION 1/8" = 1'-0"



SEE STRUCTURAL DRAWINGS FOR CONSTRUCTION DETAILS / SECTION

05 SIGNAGE ELEVATION - Location To Be Verified At time of Sign Permit 1/8" = 1'-0"

EXTERIOR MATERIALS & FINISH SCHEDULE						
CODE	MATERIAL	LOCATION	MANUFACTURER	PRODUCT	COLOR	ADDITIONAL INFORMATION
BR-1	BRICK	EXTERIOR GENERAL	GLEN GARY OR EQUAL	GLZE DETROIT OR SIMILAR	GLZE DETROIT - RED	1" THIN BRICK OR MODULAR CONTACT: WWW.GLENGARYBRICK.COM OR TAYLOR GARY: PASE DRUMMET
EPS-1	EXTERIOR INSULATED FINISHING SYSTEM	EXTERIOR GENERAL	DRYVIT OR EQUAL	SANDRAST OPR	104 DOWER SKY	CONTACT: THE SIGNERSHIP AT INTERIOR SUPPLY (888) 866-4743
EPS-2	EXTERIOR INSULATED FINISHING SYSTEM	EXTERIOR GENERAL	DRYVIT OR EQUAL	SANDRAST OPR	102 WHITE WHITE	
EP-1	EXTERIOR PAINT	TRIM & CORNICE	PPG PAINT	*SEE NOTES	518 - 1 DELICATE WHITE	CONTACT: BOB SCHROCK AT PPG INDUSTRIES (713) 243-2925
EP-2	EXTERIOR PAINT	METAL AWNINGS	BENJAMIN MOORE	*SEE NOTES		CONTACT: BENJAMIN MOORE ELECTRIC CHANGE NOTE: APPLY TO AWNING/ CANOPY/ BALLINGS
EP-3	EXTERIOR PAINT	METAL DOORS, OUTRIGS	PPG PAINT	*SEE NOTES	515 - 4 MOTTI GREY	CONTACT: BOB SCHROCK AT PPG INDUSTRIES (713) 243-2925
MC-1	METAL COILING	EXTERIOR GENERAL	W. F. HOOGAN SYSTEMS, INC	TERNA SHIP PLUS	PAINT TO MATCH EP-1	CONTACT: W.F. HOOGAN COMPANY (508) 274-4000 WWW.WFH.COM
MCC-1	METAL CANOPY CEILING	CANOPY CEILING	BERKESE	METAL VEE PANEL	SERRA TAN	NOTE: 1. PANEL WIDTH OF VENTED SECTIONS, FROM SIDE TO SIDE, INSTEAD OF DISTANCE AND EXT.
MP-1	METAL PANEL/SUPPORT	GENERAL EXTERIOR SUPPORTS	PROVIDED BY GC	BREAK METAL	COLOR: SEE EP-2	
SP-1	STOREFRONT	GENERAL	EXAMERER OR EQUAL		CLEAR ANODIZED	CONTACT: DANA RUS AT THE EXAMERER COMPANY, INC. (442) 446-0900
ST-1	DRYSTACK STONE	PILINGS AT ENTRY	NATURAL STONE VENEERS, INC	TRADITIONAL COLLECTION	BEYOND	CONTACT: NATURAL STONE VENEERS INTERNATIONAL, INC. (877) 823-2800 OR MANUFACTURED STONE VENEER
ST-2	COST STONE	MONUMENT SIGN	READING ROCK	ROCKCAST	CP - A BURNSTONE - SINGLE CHAMFERED	CONTACT: READING ROCK (513) 874-2345

**DRY CLEANERS**  
2229 WEST ARBORS DR.  
CHARLOTTE, NC

KEY PLAN

FOR CONSTRUCTION ONLY	11/20/12
REVISION	12/10/12
REV. PARAPET DESIGN	8/26/13

BUILDING ELEVATIONS

**A2.1**  
Copyright 2012, Overcash Demmitt Architects  
ODA No. 12286 CAD File: *dwg/2208\_A2-1.dwg*

ATTACHED TO ADMINISTRATIVE APPROVAL  
SEP 30 2013  
BY: DEBRA CAMPBELL



Charlotte-Mecklenburg Planning Department

DATE: September 30, 2013

TO: Mark Fowler  
Zoning Supervisor

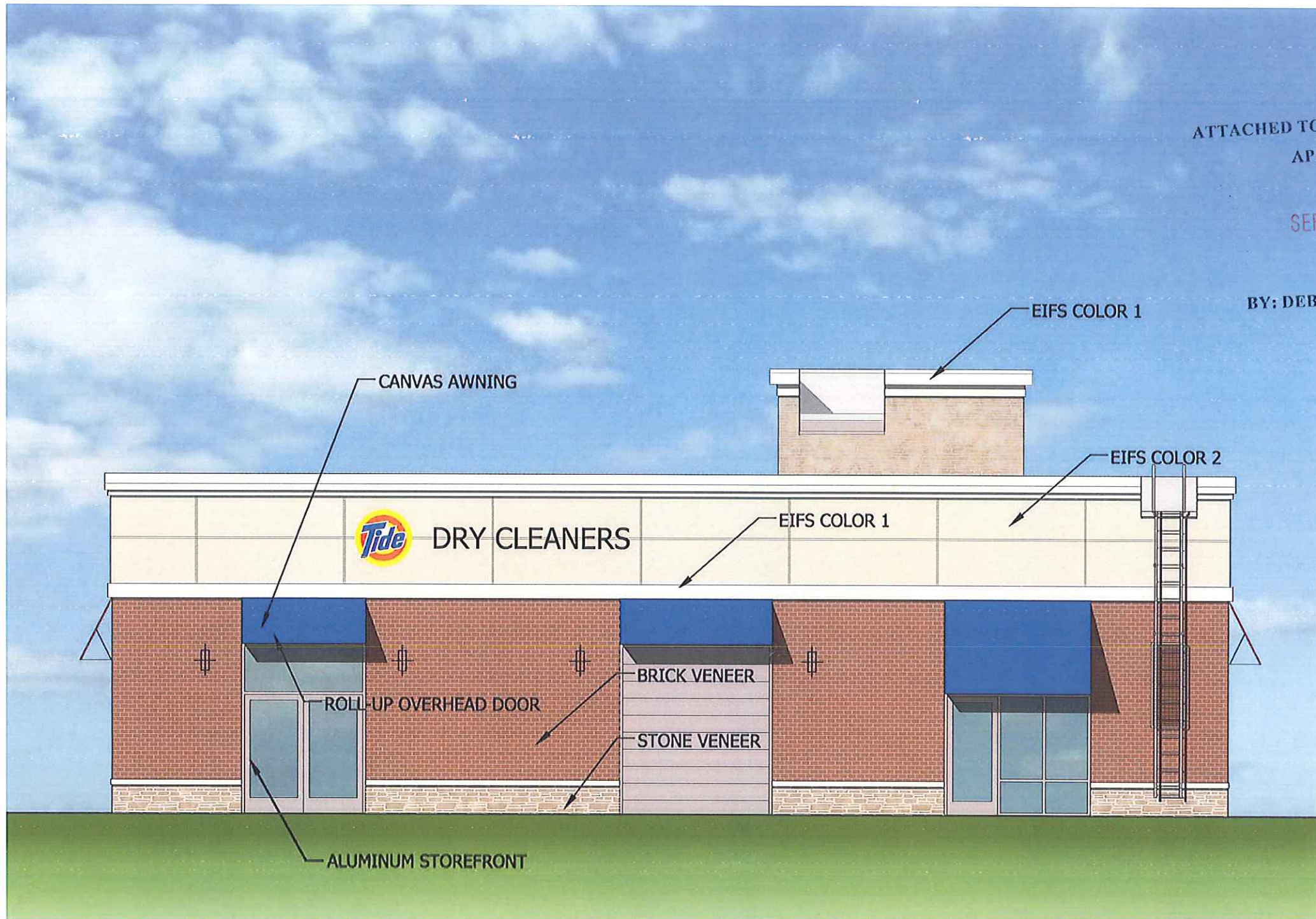
FROM: Debra Campbell  
Planning Director

SUBJECT: Administrative Approval for Petition No. 2012-079 TAG Ventures, LLC

Attached are the proposed elevations for petition 2012-079. Since these changes do not alter the intent of the development and meet the requirements of the conditional site plan, I am approving these elevations. Please use these plans when evaluating requests for building permits and certificates of occupancy.

Note: All other Zoning, Subdivision, Tree Ordinance and conditional requirements still apply.

Please note signage was not a part of this review.



ATTACHED TO ADMINISTRATIVE  
APPROVAL

SEP 30 2013

BY: DEBRA CAMPBELL

BACK ELEVATION

08.26.13

# TIDE DRY CLEANERS - THE ARBORS

TAG Ventures

Charlotte, North Carolina

overcash demmitt architects



SIDE ELEVATION

ATTACHED TO ADMINISTRATIVE  
APPROVAL

SEP 30 2013

BY: DEBRA CAMPBELL



08.26.13

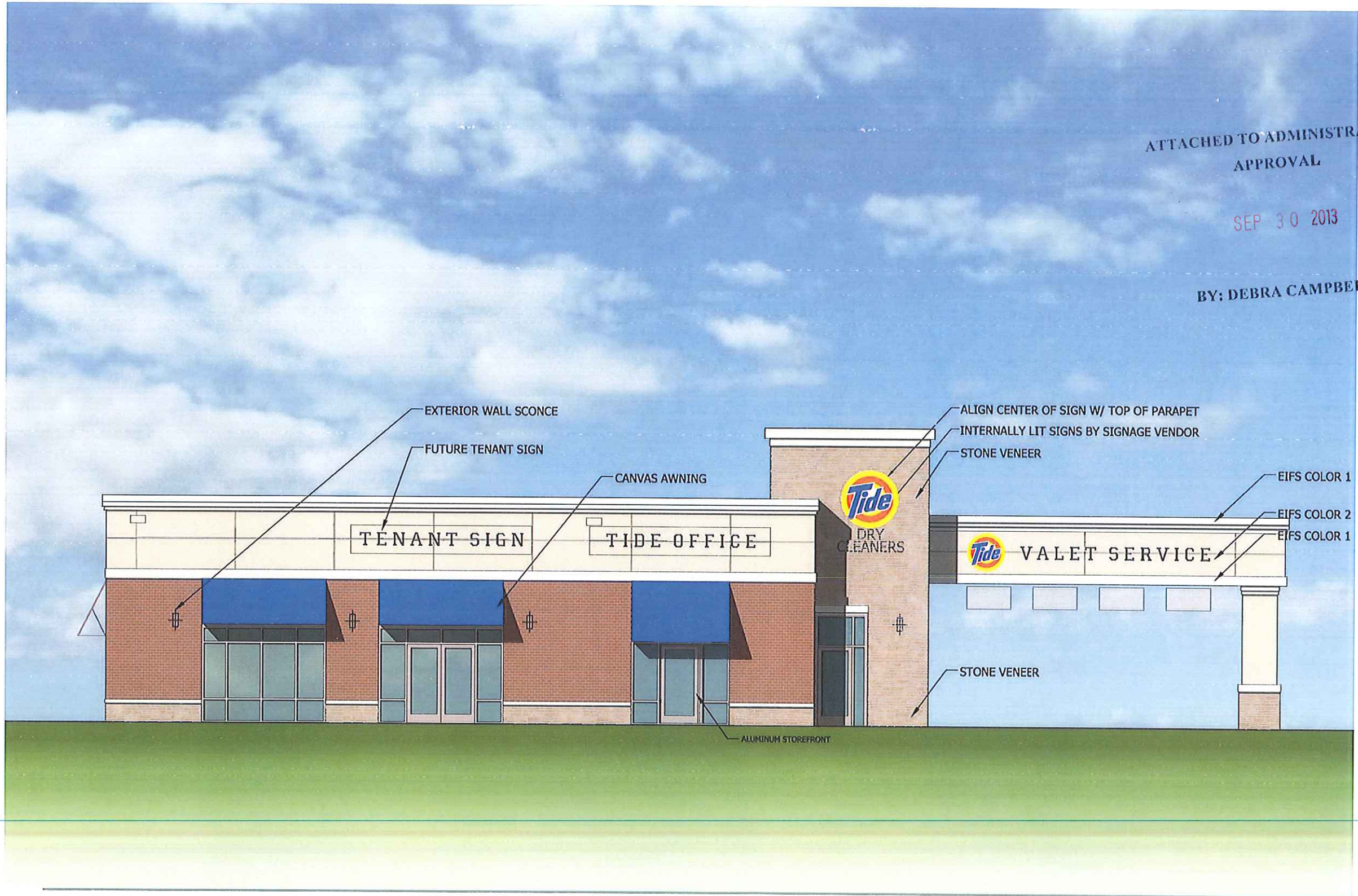
TIDE DRY CLEANERS - THE ARBORS

TAG Ventures

Charlotte, North Carolina

overcash demmitt architects





ATTACHED TO ADMINISTRATIVE  
APPROVAL

SEP 30 2013

BY: DEBRA CAMPBELL

SIDE ELEVATION

08.26.13

# TIDE DRY CLEANERS - THE ARBORS

TAG Ventures  
Charlotte, North Carolina

overcash demmitt architects



ATTACHED TO ADMINISTRATIVE  
APPROVAL

SEP 30 2013

BY: DEBRA CAMPBELL



FRONT ELEVATION

08.26.13

# TIDE DRY CLEANERS - THE ARBORS

TAG Ventures  
Charlotte, North Carolina

overcash demmitt architects

