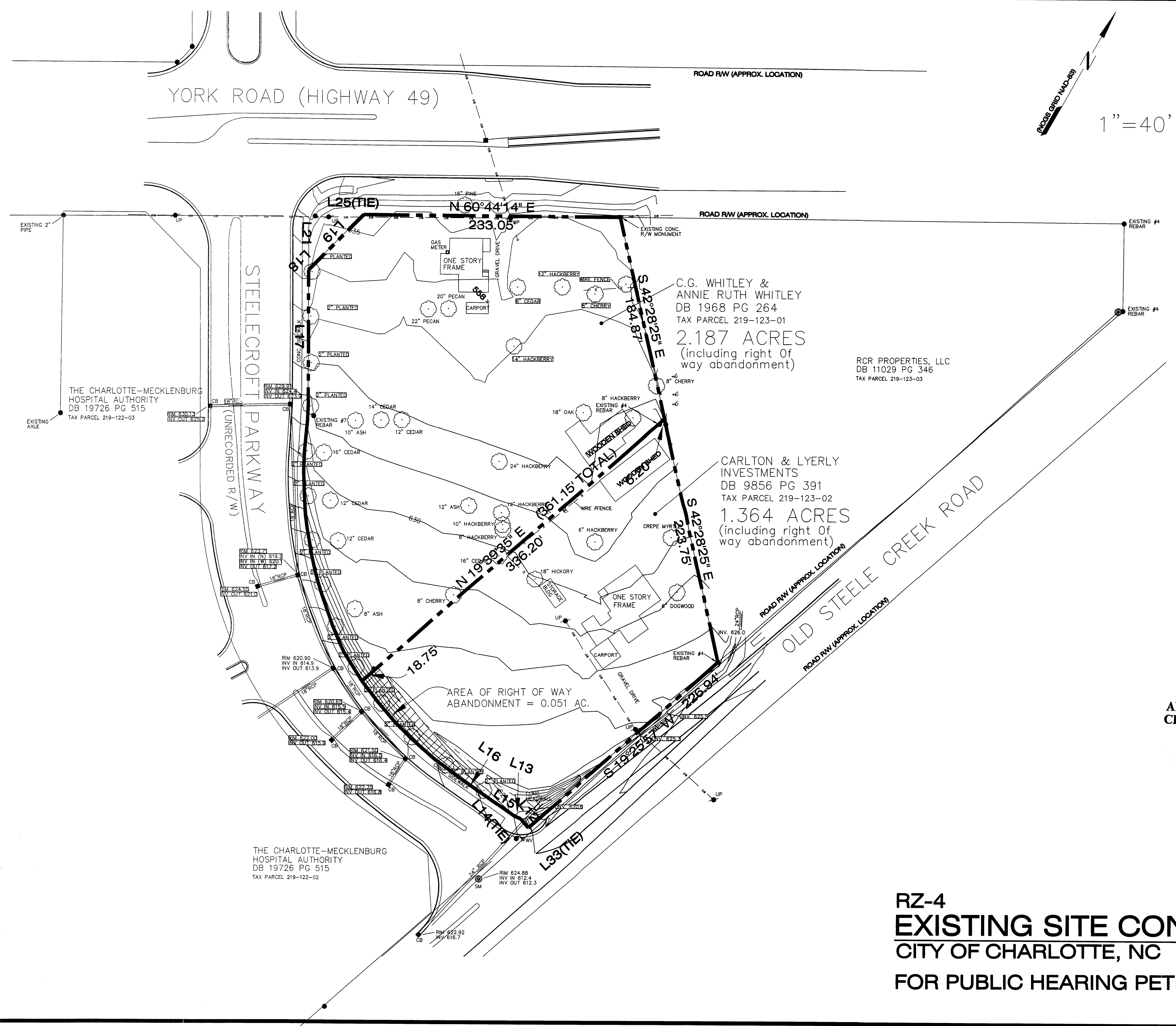


1" = 40'
NCCS GRID MD-89



C.G. WHITLEY &
ANNIE RUTH WHITLEY
DB 1968 PG 264
TAX PARCEL 219-123-01
2.187 ACRES
(including right of
way abandonment)

ROR PROPERTIES, LLC
DB 11029 PG 346
TAX PARCEL 219-123-03

CARLTON & LYERLY
INVESTMENTS
DB 9856 PG 391
TAX PARCEL 219-123-02
1.364 ACRES
(including right of
way abandonment)

AREA OF RIGHT OF WAY
ABANDONMENT = 0.051 AC.

THE CHARLOTTE-MECKLENBURG
HOSPITAL AUTHORITY
DB 19726 PG 515
TAX PARCEL 219-122-03

THE CHARLOTTE-MECKLENBURG
HOSPITAL AUTHORITY
DB 19726 PG 515
TAX PARCEL 219-122-02

APPROVED BY
CITY COUNCIL
OCT 21 2013

RZ-4
EXISTING SITE CONDITION
CITY OF CHARLOTTE, NC
FOR PUBLIC HEARING PETITION 2013-060
revised: 10-2-13