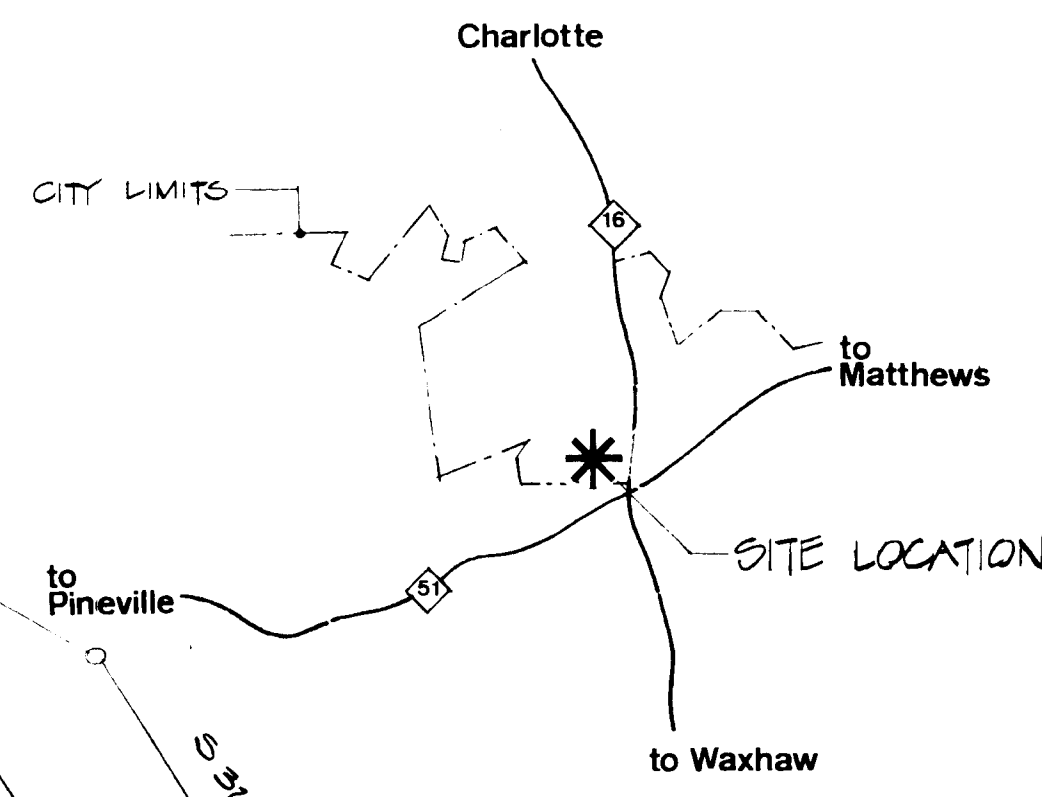


plan summary

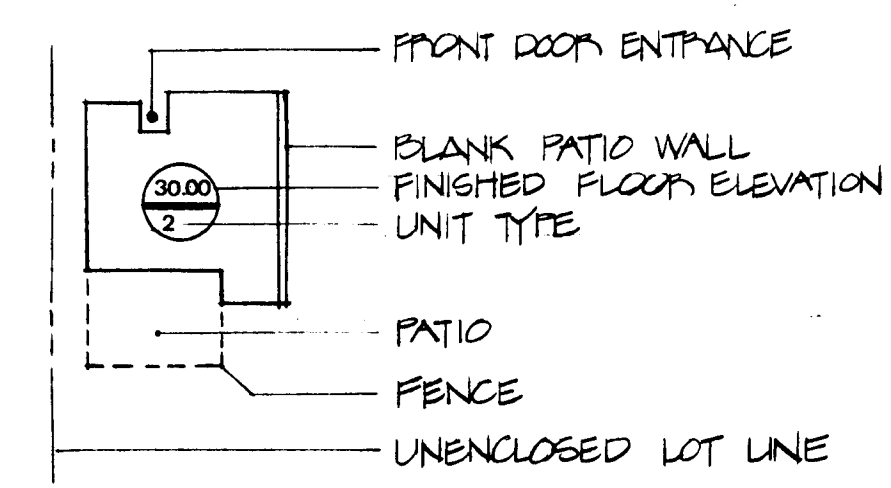
| | PARCEL A | PARCEL B | TOTAL |
|---------------------------|-----------|-----------|-----------|
| SITE AREA | 10.03 ac | 6.88 ac | 17.91 ac |
| NUMBER OF DWELLING UNITS | 73 | 33 | 106 |
| PARKING SPACES REQUIRED | 164 | 74 | 238 |
| PARKING SPACES PROVIDED | 166 | 75 | 241 |
| CRUISES DENSITY | 5.60 DU/A | 4.77 DU/A | 5.34 DU/A |
| BUILDING COVERAGE | 2.84 ac | 1.81 ac | 4.65 ac |
| ROAD AND PARKING COVERAGE | 2.17 ac | .86 ac | 3.03 ac |
| PRIVATE OPEN SPACE AREA | 2.51 ac | 1.14 ac | 3.65 ac |
| PUBLIC OPEN SPACE AREA | 5.31 ac | 3.57 ac | 9.10 ac |

AVERAGE LOT SIZE : 2100 SQ. FT.
 PARKING RATIO : 2.31 SPACES/DU
 CURRENT ZONING : PUD, MF

location map



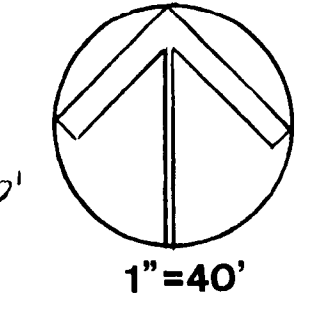
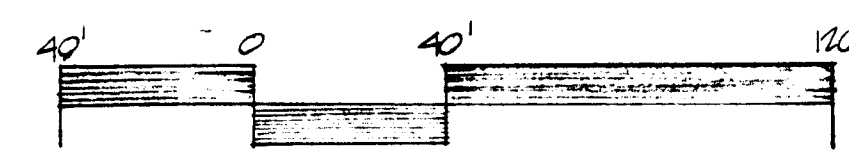
legend



John Crosland Company

Candlewyck Patio Homes

Basic plan as shown here approved by Pl. Comm. March 4/1980



GENERAL SITE PLAN
PARCEL A

DATE 15 DECEMBER 1979
REVISIONS:

SHEET 1 OF 2

Landscape Architects
Land Planners

LandDesign Charlotte, N.C.

GENERAL SITE PLAN
PARCEL B

DATE 15 DECEMBER 1979
REVISIONS:

SHEET 2 OF 2

