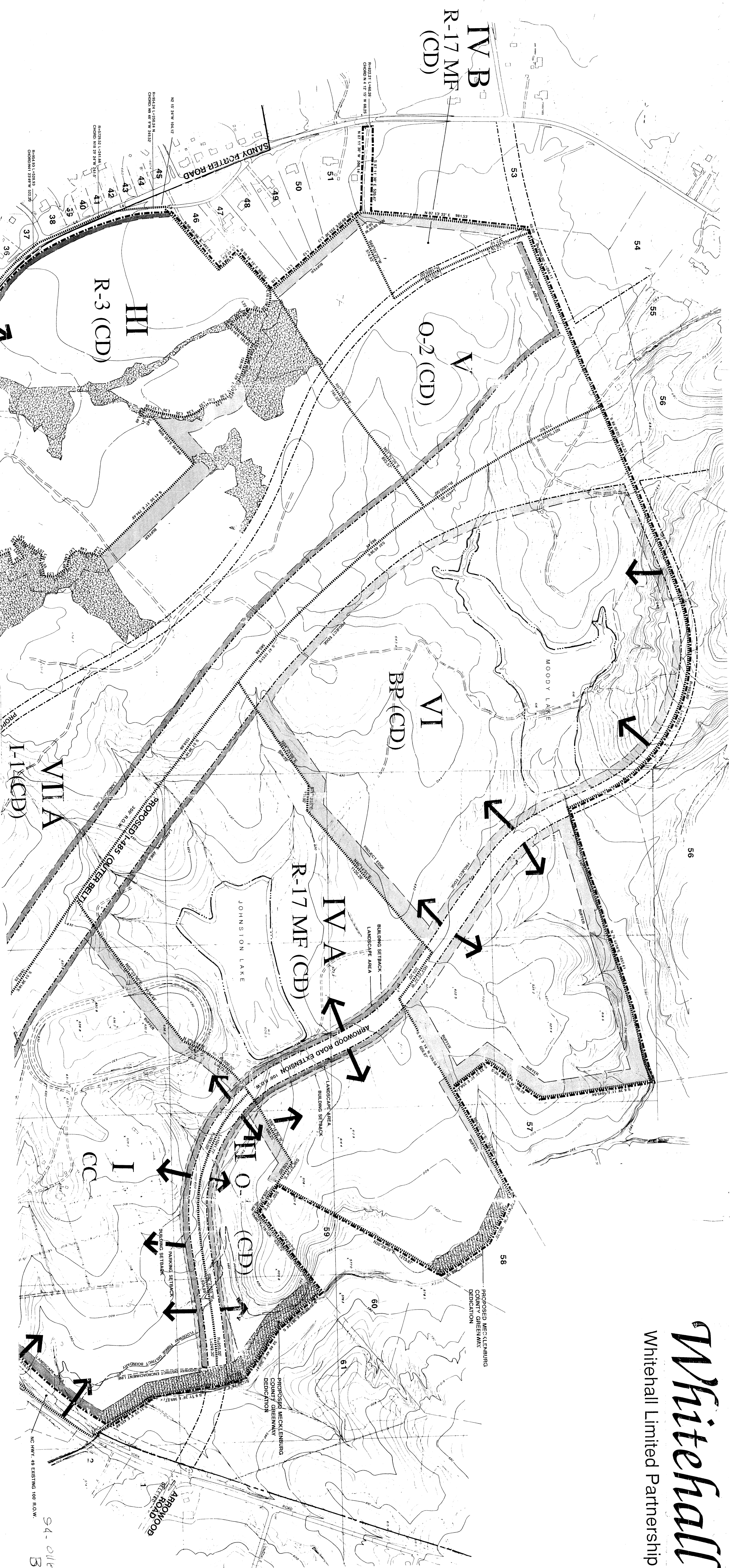


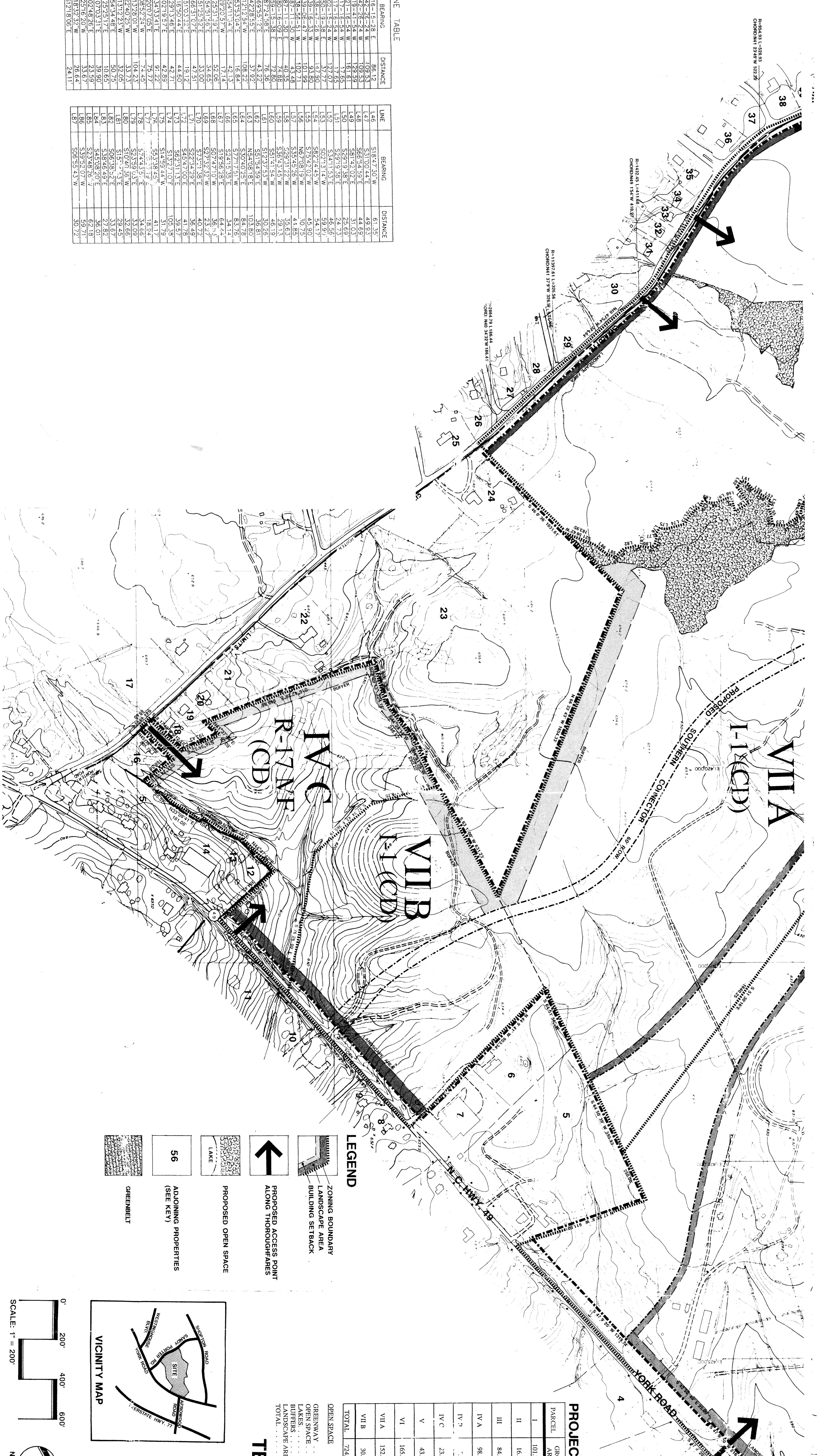
Whitehall

Whitehall Limited Partnership



LINE TABLE

LINE	BEARING	DISTANCE	LINE	BEARING	DISTANCE
1	N 89° 58' 30" W	10.00	11	N 89° 58' 30" W	10.00
2	N 89° 58' 30" W	10.00	12	N 89° 58' 30" W	10.00
3	N 89° 58' 30" W	10.00	13	N 89° 58' 30" W	10.00
4	N 89° 58' 30" W	10.00	14	N 89° 58' 30" W	10.00
5	N 89° 58' 30" W	10.00	15	N 89° 58' 30" W	10.00
6	N 89° 58' 30" W	10.00	16	N 89° 58' 30" W	10.00
7	N 89° 58' 30" W	10.00	17	N 89° 58' 30" W	10.00
8	N 89° 58' 30" W	10.00	18	N 89° 58' 30" W	10.00
9	N 89° 58' 30" W	10.00	19	N 89° 58' 30" W	10.00
10	N 89° 58' 30" W	10.00	20	N 89° 58' 30" W	10.00
21	N 89° 58' 30" W	10.00	31	N 89° 58' 30" W	10.00
22	N 89° 58' 30" W	10.00	32	N 89° 58' 30" W	10.00
23	N 89° 58' 30" W	10.00	33	N 89° 58' 30" W	10.00
24	N 89° 58' 30" W	10.00	34	N 89° 58' 30" W	10.00
25	N 89° 58' 30" W	10.00	35	N 89° 58' 30" W	10.00
26	N 89° 58' 30" W	10.00	36	N 89° 58' 30" W	10.00
27	N 89° 58' 30" W	10.00	37	N 89° 58' 30" W	10.00
28	N 89° 58' 30" W	10.00	38	N 89° 58' 30" W	10.00
29	N 89° 58' 30" W	10.00	39	N 89° 58' 30" W	10.00
30	N 89° 58' 30" W	10.00	40	N 89° 58' 30" W	10.00
31	N 89° 58' 30" W	10.00	41	N 89° 58' 30" W	10.00
32	N 89° 58' 30" W	10.00	42	N 89° 58' 30" W	10.00
33	N 89° 58' 30" W	10.00	43	N 89° 58' 30" W	10.00
34	N 89° 58' 30" W	10.00	44	N 89° 58' 30" W	10.00
35	N 89° 58' 30" W	10.00	45	N 89° 58' 30" W	10.00
36	N 89° 58' 30" W	10.00	46	N 89° 58' 30" W	10.00
37	N 89° 58' 30" W	10.00	47	N 89° 58' 30" W	10.00
38	N 89° 58' 30" W	10.00	48	N 89° 58' 30" W	10.00
39	N 89° 58' 30" W	10.00	49	N 89° 58' 30" W	10.00
40	N 89° 58' 30" W	10.00	50	N 89° 58' 30" W	10.00
41	N 89° 58' 30" W	10.00	51	N 89° 58' 30" W	10.00
42	N 89° 58' 30" W	10.00	52	N 89° 58' 30" W	10.00
43	N 89° 58' 30" W	10.00	53	N 89° 58' 30" W	10.00
44	N 89° 58' 30" W	10.00	54	N 89° 58' 30" W	10.00
45	N 89° 58' 30" W	10.00	55	N 89° 58' 30" W	10.00
46	N 89° 58' 30" W	10.00	56	N 89° 58' 30" W	10.00
47	N 89° 58' 30" W	10.00	57	N 89° 58' 30" W	10.00
48	N 89° 58' 30" W	10.00	58	N 89° 58' 30" W	10.00
49	N 89° 58' 30" W	10.00	59	N 89° 58' 30" W	10.00
50	N 89° 58' 30" W	10.00	60	N 89° 58' 30" W	10.00
51	N 89° 58' 30" W	10.00	61	N 89° 58' 30" W	10.00
52	N 89° 58' 30" W	10.00	62	N 89° 58' 30" W	10.00
53	N 89° 58' 30" W	10.00	63	N 89° 58' 30" W	10.00
54	N 89° 58' 30" W	10.00	64	N 89° 58' 30" W	10.00
55	N 89° 58' 30" W	10.00	65	N 89° 58' 30" W	10.00
56	N 89° 58' 30" W	10.00	66	N 89° 58' 30" W	10.00
57	N 89° 58' 30" W	10.00	67	N 89° 58' 30" W	10.00
58	N 89° 58' 30" W	10.00	68	N 89° 58' 30" W	10.00
59	N 89° 58' 30" W	10.00	69	N 89° 58' 30" W	10.00
60	N 89° 58' 30" W	10.00	70	N 89° 58' 30" W	10.00
61	N 89° 58' 30" W	10.00	71	N 89° 58' 30" W	10.00
62	N 89° 58' 30" W	10.00	72	N 89° 58' 30" W	10.00
63	N 89° 58' 30" W	10.00	73	N 89° 58' 30" W	10.00
64	N 89° 58' 30" W	10.00	74	N 89° 58' 30" W	10.00
65	N 89° 58' 30" W	10.00	75	N 89° 58' 30" W	10.00
66	N 89° 58' 30" W	10.00	76	N 89° 58' 30" W	10.00
67	N 89° 58' 30" W	10.00	77	N 89° 58' 30" W	10.00
68	N 89° 58' 30" W	10.00	78	N 89° 58' 30" W	10.00
69	N 89° 58' 30" W	10.00	79	N 89° 58' 30" W	10.00
70	N 89° 58' 30" W	10.00	80	N 89° 58' 30" W	10.00



LEGEND

- CONING DOMINANT BUILDING SETBACK
- PROPOSED OPEN SPACE
- PROPOSED ACCESS POINT FROM TRANSPORTATION
- ADJOINING PROPERTIES (SEE MAP)
- OPENWATER
- WATER
- LAND

TECHNICAL DATA SHEET

DATE: 10/09/2023
 SHEET NO: 12/28/23
 PROJECT: Whitehall Limited Partnership

DESIGNER: L&D DESIGN INC.
 PROJECT MANAGER: [Signature]
 CHECKED: [Signature]
 APPROVED: [Signature]

SCALE: 1" = 200'

VICINITY MAP

PROJECT SUMMARY

ZONE	EXISTING	PROPOSED	USE	BUILDING	OPENSPACE	ROADWAY
I	101.3 AC	R-3	CC	580,000 SF	87 AC	18.3 AC
II	16.8 AC	R-3	O-2 (CD)	100,000 SF	5.0 AC	2.9 AC
III	84.4 AC	R-3	R-3 (CD)	Single Family	244,000	43.1 AC
IV A	98.1 AC	R-3	R-17 MF (CD)	Medium Density Residential	1,599,000	138.8 AC
IV B	1.3 AC	R-3	R-17 MF (CD)	Medium Density Residential	79,000	11.8 AC
IV C	218.3 AC	R-17 MF (CD)	R-17 MF (CD)	Medium Density Residential	301,000	318.8 AC
V	43.8 AC	R-3	O-2 (CD)	Office	470,000 SF	2.2 AC
VII A	153.9 AC	R-3	BR (CD)	Residential	1,530,000	21.1 AC
VII B	301.9 AC	R-3	I-1 (CD)	Light Industrial	1,000,000	29.8 AC
TOTAL	2,254.4				4,600,000 SF	246.6 AC

TOTAL PROJECT AREA: 231.95 ACRES

ZONE	EXISTING	PROPOSED	USE	BUILDING	OPENSPACE	ROADWAY
I	101.3 AC	R-3	CC	580,000 SF	87 AC	18.3 AC
II	16.8 AC	R-3	O-2 (CD)	100,000 SF	5.0 AC	2.9 AC
III	84.4 AC	R-3	R-3 (CD)	Single Family	244,000	43.1 AC
IV A	98.1 AC	R-3	R-17 MF (CD)	Medium Density Residential	1,599,000	138.8 AC
IV B	1.3 AC	R-3	R-17 MF (CD)	Medium Density Residential	79,000	11.8 AC
IV C	218.3 AC	R-17 MF (CD)	R-17 MF (CD)	Medium Density Residential	301,000	318.8 AC
V	43.8 AC	R-3	O-2 (CD)	Office	470,000 SF	2.2 AC
VII A	153.9 AC	R-3	BR (CD)	Residential	1,530,000	21.1 AC
VII B	301.9 AC	R-3	I-1 (CD)	Light Industrial	1,000,000	29.8 AC
TOTAL	2,254.4				4,600,000 SF	246.6 AC