

R=954.93 L=528.93
CHORD=N1 2349' W 522.20'

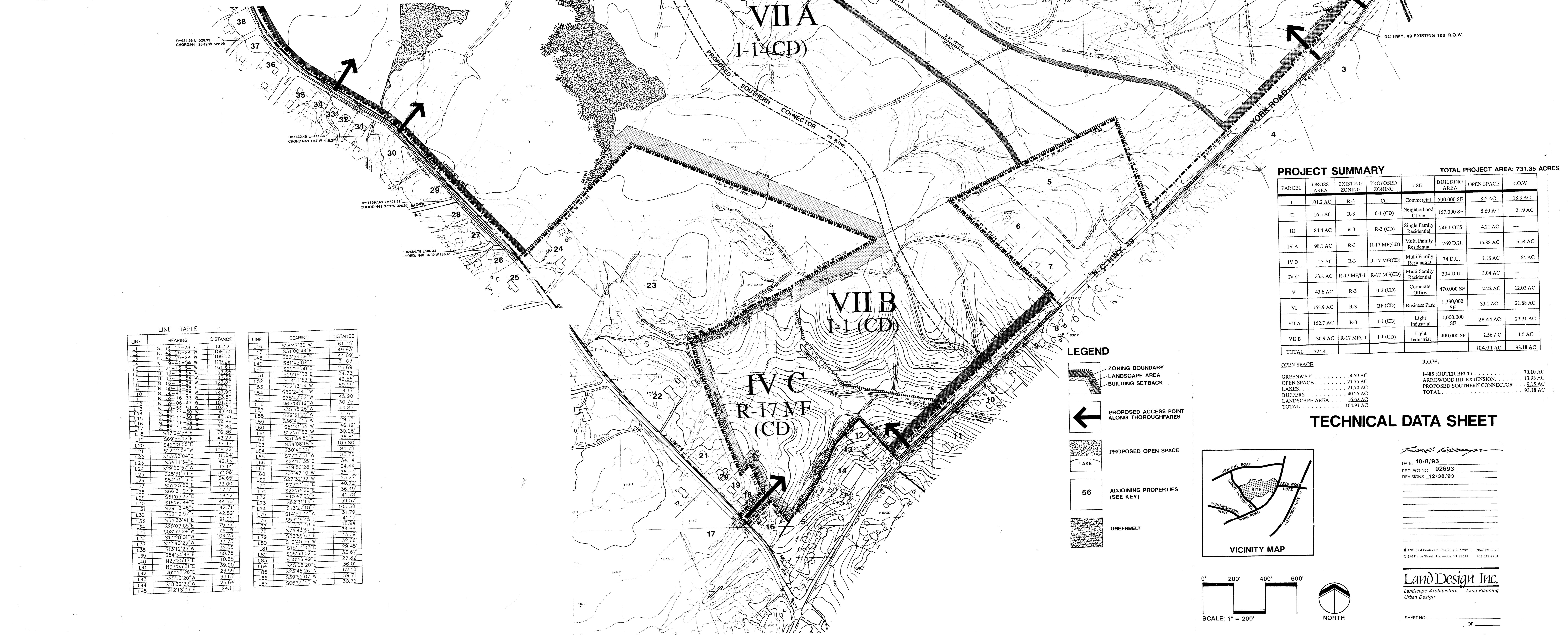
R=1432.45 L=1111.68
CHORD=N45 134' W 410.20'

R=11397.61 L=320.56
CHORD=N41 379' W 320.56'

R=2884.79 L=188.44
CHORD=N40 343' W 188.44'

LINE TABLE

LINE	BEARING	DISTANCE
L1	S 16-15-28 E	86.12
L2	N 42-26-24 W	109.53
L3	N 42-26-24 W	109.53
L4	N 19-41-54 W	123.59
L5	N 21-18-54 W	161.61
L6	N 17-18-54 W	17.65
L7	N 17-16-54 W	17.65
L8	N 02-15-24 W	127.07
L9	N 50-19-38 E	37.77
L10	N 38-47-26 W	127.90
L11	N 39-16-33 W	93.80
L12	N 39-06-47 W	101.99
L13	N 38-56-51 W	102.71
L14	N 37-11-30 W	43.48
L15	S 87-11-30 E	40.35
L16	N 80-16-09 E	74.88
L17	S 39-18-38 E	72.80
L18	S 57-24-58 E	75.36
L19	S 69-55-12 E	43.22
L20	S 42-28-55 E	37.92
L21	S 12-12-54 W	108.22
L22	N 53-53-04 E	16.84
L23	S 54-11-34 E	42.13
L24	S 29-20-57 W	17.14
L25	S 25-31-59 E	52.06
L26	S 54-51-56 E	34.65
L27	S 51-25-52 E	33.00
L28	S 66-31-02 E	47.51
L29	S 51-03-32 E	19.12
L30	S 16-50-44 E	44.80
L31	S 29-13-46 E	42.71
L32	S 02-19-57 E	42.89
L33	S 34-33-41 E	91.22
L34	S 20-07-05 E	75.77
L35	S 08-52-22 W	74.45
L36	S 13-28-01 W	104.23
L37	S 22-40-25 W	33.73
L38	S 13-12-23 W	32.05
L39	S 54-34-48 E	50.75
L40	N 25-51-17 E	10.65
L41	N 07-03-31 E	39.90
L42	N 02-48-26 E	23.59
L43	S 25-16-20 W	33.67
L44	S 18-32-32 W	26.64
L45	S 12-18-06 E	24.11
L46	S 18-47-30 W	61.35
L47	S 31-00-44 E	49.93
L48	S 66-54-59 E	44.69
L49	S 81-42-02 E	31.03
L50	S 29-19-38 E	25.69
L51	S 29-19-38 E	24.73
L52	S 34-11-53 E	46.56
L53	S 02-13-14 W	59.91
L54	S 82-24-45 W	54.17
L55	S 75-42-02 W	45.90
L56	N 67-08-19 W	30.75
L57	S 35-48-26 W	41.85
L58	S 29-31-22 W	35.63
L59	S 36-43-45 W	29.13
L60	S 51-74-56 W	46.19
L61	S 12-37-53 W	30.26
L62	S 51-54-59 E	36.81
L63	N 54-08-18 E	103.80
L64	S 30-40-25 E	84.78
L65	S 77-17-51 W	83.76
L66	S 24-13-35 E	34.14
L67	S 19-56-28 E	64.44
L68	S 07-47-10 W	36.13
L69	S 27-32-32 W	23.27
L70	S 73-21-58 E	40.72
L71	S 22-34-29 E	36.49
L72	S 45-47-00 E	41.78
L73	S 62-31-13 E	39.57
L74	S 13-27-10 E	105.38
L75	S 14-59-44 W	31.79
L76	S 53-38-45 E	41.17
L77	S 75-27-19 E	18.94
L78	S 74-43-57 E	34.66
L79	S 23-58-03 E	33.06
L80	S 10-40-36 W	32.66
L81	S 15-11-33 E	29.45
L82	S 06-38-52 E	33.67
L83	S 38-46-49 E	27.82
L84	S 45-08-20 E	36.01
L85	S 23-48-26 W	62.18
L86	S 39-52-07 W	59.71
L87	S 06-55-43 W	30.72



PROJECT SUMMARY TOTAL PROJECT AREA: 731.35 ACRES

PARCEL	GROSS AREA	EXISTING ZONING	PROPOSED ZONING	USE	BUILDING AREA	OPEN SPACE	R.O.W.
I	101.2 AC	R-3	CC	Commercial	500,000 SF	8.6 AC	18.3 AC
II	16.5 AC	R-3	0-1 (CD)	Neighborhood Office	167,000 SF	5.69 AC	2.19 AC
III	84.4 AC	R-3	R-3 (CD)	Single Family Residential	246 LOTS	4.21 AC	---
IV A	98.1 AC	R-3	R-17 MF(CD)	Multi Family Residential	1269 D.U.	15.88 AC	9.54 AC
IV B	7.3 AC	R-3	R-17 MF(CD)	Multi Family Residential	74 D.U.	1.18 AC	.64 AC
IV C	23.8 AC	R-17 MF/I-1	R-17 MF(CD)	Multi Family Residential	304 D.U.	3.04 AC	---
V	43.6 AC	R-3	0-2 (CD)	Corporate Office	470,000 SF	2.22 AC	12.02 AC
VI	165.9 AC	R-3	BP (CD)	Business Park	1,330,000 SF	33.1 AC	21.68 AC
VII A	152.7 AC	R-3	I-1 (CD)	Light Industrial	1,000,000 SF	28.41 AC	27.31 AC
VII B	30.9 AC	R-17 MF/I-1	I-1 (CD)	Light Industrial	400,000 SF	2.56 AC	1.5 AC
TOTAL	724.4					104.91 AC	93.18 AC

LEGEND

- ZONING BOUNDARY
- LANDSCAPE AREA
- BUILDING SETBACK
- PROPOSED ACCESS POINT ALONG THOROUGHFARES
- PROPOSED OPEN SPACE
- LAKE
- ADJOINING PROPERTIES (SEE KEY)
- GREENBELT

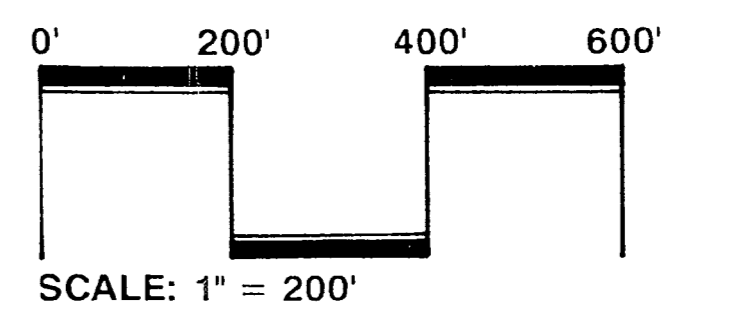
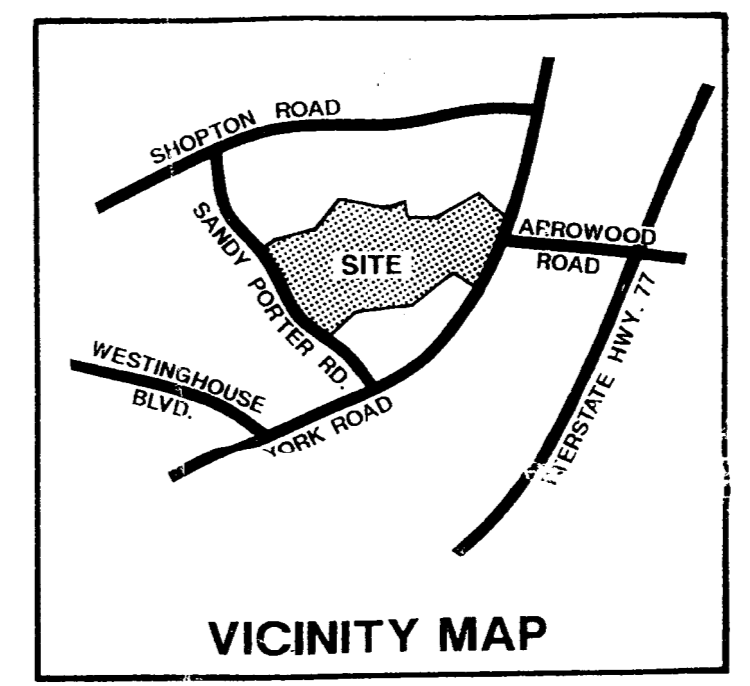
OPEN SPACE

GREENWAY	4.59 AC
OPEN SPACE	21.75 AC
LAKE	21.70 AC
BUFFERS	40.25 AC
LANDSCAPE AREA	16.62 AC
TOTAL	104.91 AC

R.O.W.

I-485 (OUTER BELT)	70.10 AC
ARROWOOD RD. EXTENSION	13.93 AC
PROPOSED SOUTHERN CONNECTOR	9.15 AC
TOTAL	93.18 AC

TECHNICAL DATA SHEET



Land Design Inc.
 DATE: 10/8/93
 PROJECT NO: 92693
 REVISIONS: 12/30/93

Land Design Inc.
 Landscape Architecture Land Planning
 Urban Design

SHEET NO: _____ OF: _____

Approved 4/10/94