

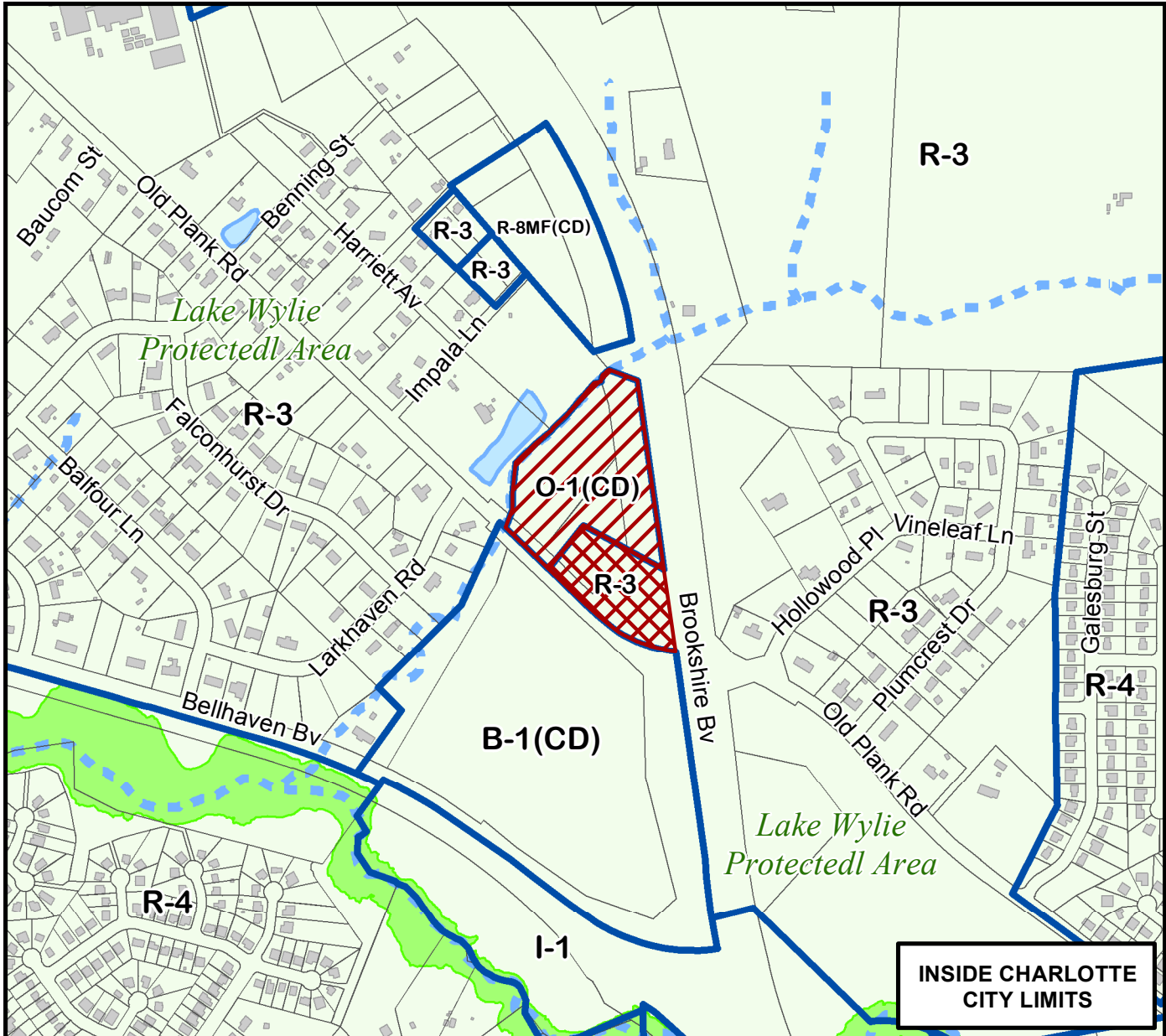
Petition #: **2017-018**

Petitioner: **Robert Puckett & Steven Mozeley**

Zoning Classification (Existing): **R-3 (LWPA) & O-1(CD)(LWPA)**
(Single Family Residential & Light Industrial, Conditional, both Lake Wylie Protected Area)

Zoning Classification (Requested): **BD(CD) (LWPA), 5 Year Vested Rights**
(Distributive Business, Conditional, Lake Wylie Protected Area, Five Year Vested Rights)

Acreeage & Location: Approximately 5.96 acres located in the north west quadrant at the intersection of Old Plank Road and Brookshire Boulevard.



Map Produced by the Charlotte-Mecklenburg Planning Department, 12-12-2016.

0 175 350 700 1,050 1,400 Feet



Zoning Map #(s)

62

- Requested BD(CD) (LWPA) 5 Year Vested from O-1(CD) (LWPA)
- Requested BD(CD) (LWPA) 5 Year Vested from R-3 (LWPA)
- Existing Building Footprints
- Existing Zoning Boundaries
- Charlotte City Limits
- Pedestrian Overlay
- FEMA flood plain
- Watershed
- Lakes and Ponds
- Creeks and Streams
- Historic District