

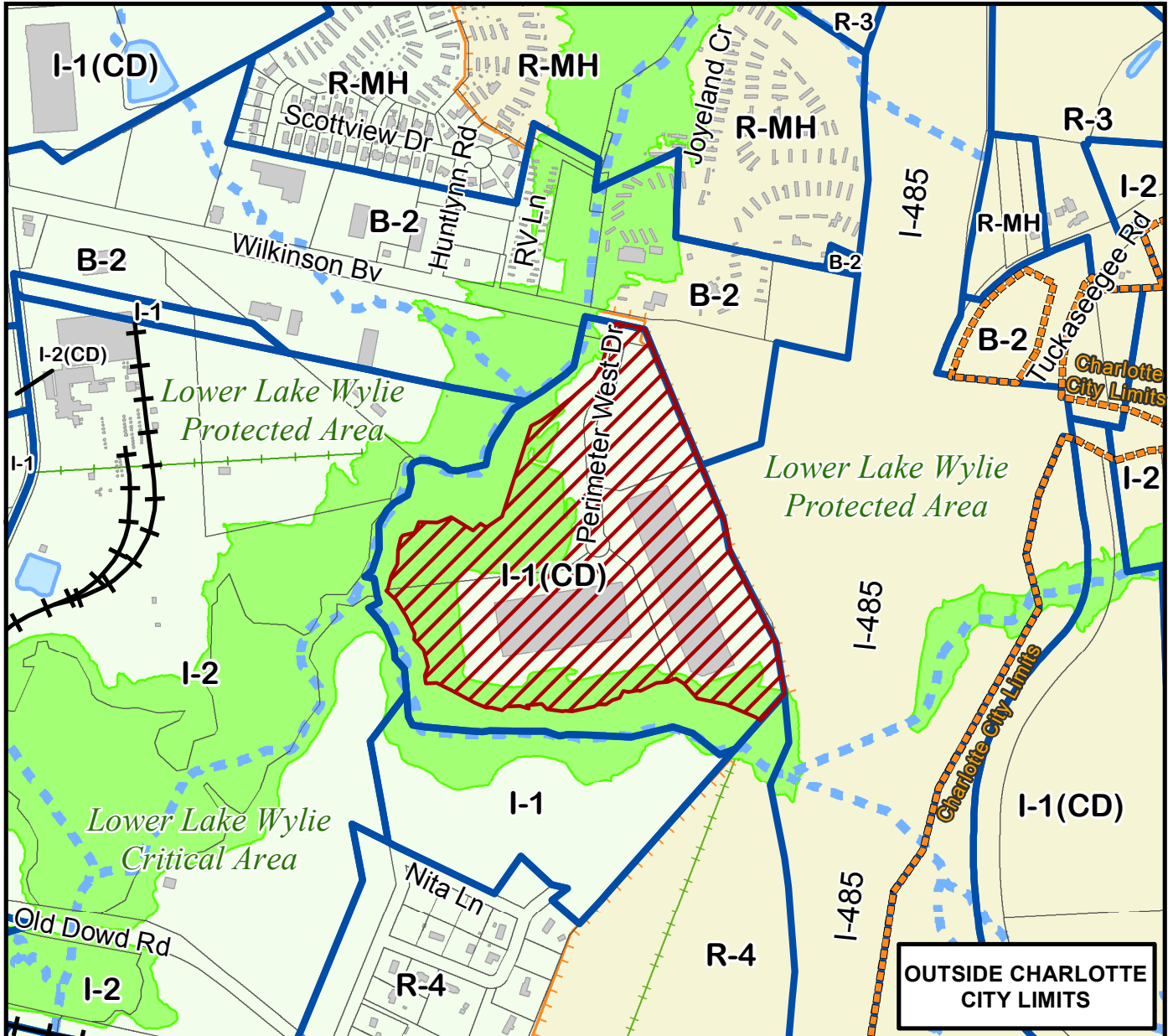
Petition #: **2017-061**

Petitioner: **LBP Berryhill, LLC**

Zoning Classification (Existing): **I-1(CD) LLWPA**  
(Light Industrial, Conditional, Lower Lake Wylie Protected Area)

Zoning Classification (Requested): **I-1(CD) SPA LLWPA**  
(Light Industrial, Conditional, Site Plan Amendment, Lower Lake Wylie Protected Area)

Acreage & Location: Approximately 42.11 acres surrounding Perimeter West Drive, South of Wilkinson Boulevard and West of Interstate 485.



Map Produced by the Charlotte-Mecklenburg Planning Department, 3-27-2017.

0 225 450 900 1,350 1,800 Feet



Zoning Map #(s)

**85**

	Requested I-1(CD) SPA LLWPA from I-1(CD) LLWPA		Charlotte City Limits
	Existing Building Footprints		Creeks and Streams
	Existing Zoning Boundaries		FEMA flood plain
	Pedestrian Overlay		Watershed
	Historic District		Lakes and Ponds
	Airport Noise Overlay		