

2017-186 : The Drakeford Company

Current Zoning R-22MF HD (Multi-Family Residential, Historic District Overlay)

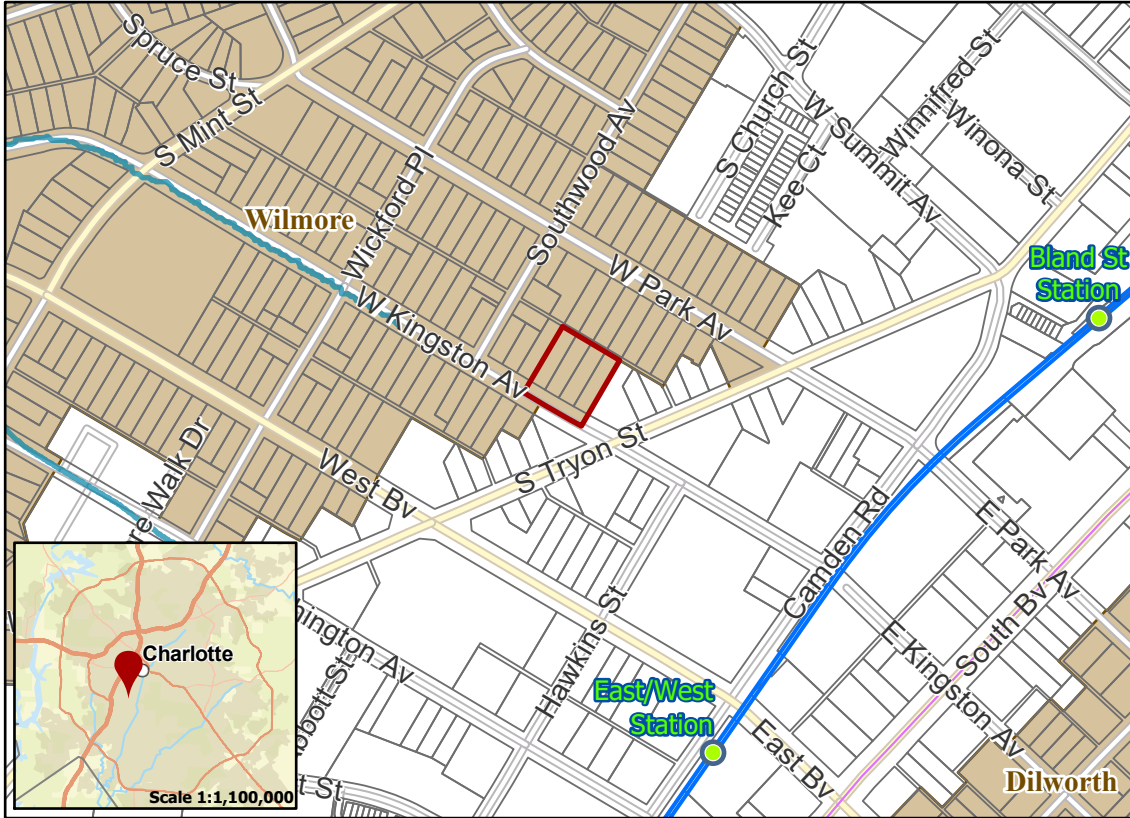
Requested Zoning UR-2(CD) TS HD, 5 Year Vested (Urban Residential, Conditional, Transit Supportive Overlay, Historic District Overlay with 5 Year Vested Rights)

Approximately 0.87 acres

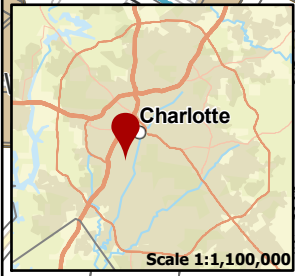
Rezoning Map



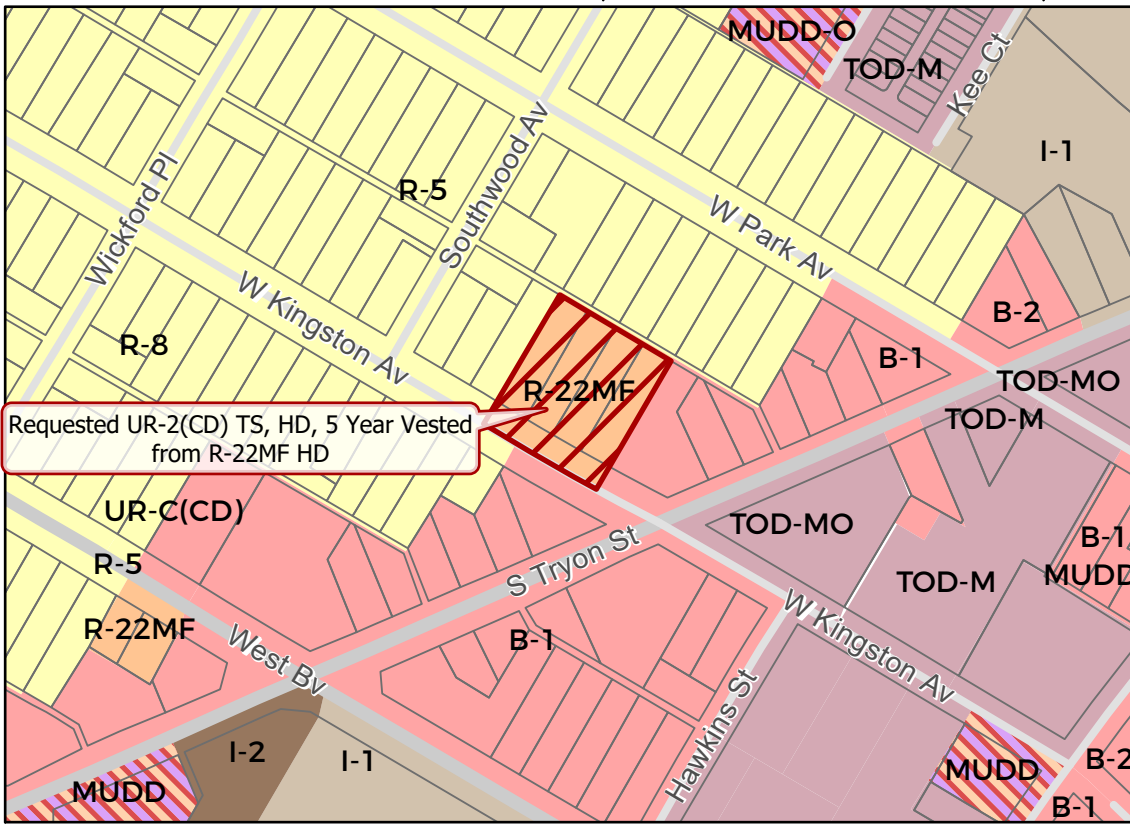
Location of Requested Rezoning



- 2017-186
- Inside City Limits
- Parcel
- LYNX Blue Line Station
- LYNX Blue Line
- Streams
- Historic Districts
- City Council District**
- 3-LaWana Mayfield



Existing Zoning & Rezoning Request



- Requested UR-2(CD) TS HD
5 Year Vested from R-22MF HD
- Zoning Classification**
- Single Family
- Multi-Family
- Business
- Light Industrial
- Heavy Industrial
- Mixed Use
- Transit-Oriented



Map Created 12/11/2017