

2017-194: Dipak & Sushma Patel

Rezoning Map

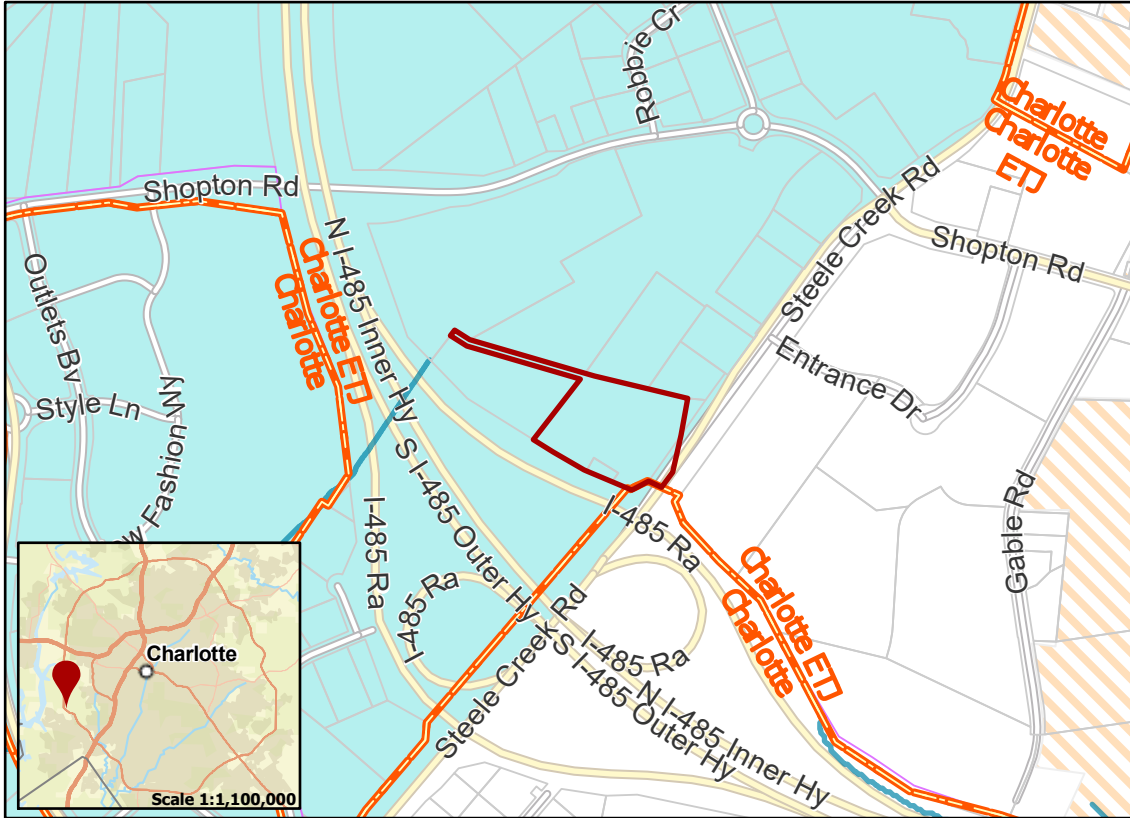
Current Zoning R-3 LLWPA (Single Family Residential, Lower Lake Wylie Protected Area)

Requested Zoning B-2 LLWPA (General Business, Lower Lake Wylie Protected Area)

Approximately 4.867 acres

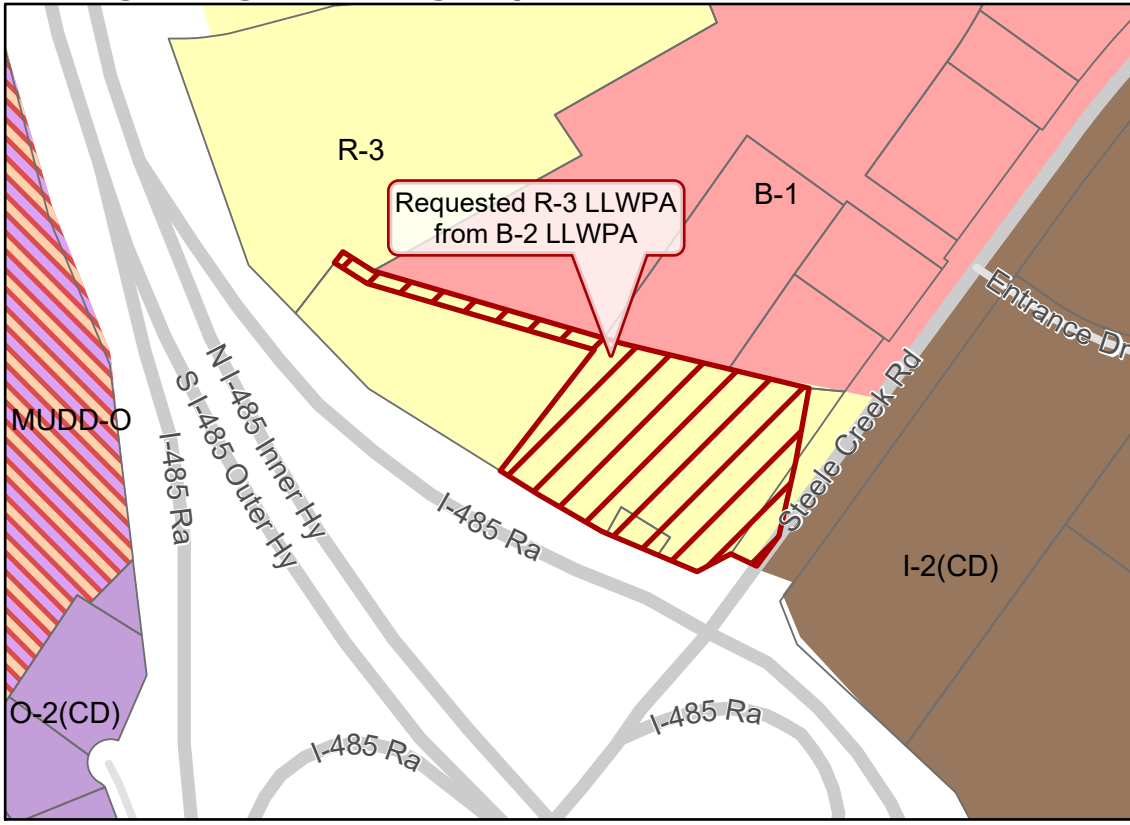


Location of Requested Rezoning



- 2017-194
- Outside City Limits
- Parcel
- Streams
- Airport Noise Overlay
- Watershed Overlay
- Lower Lake Wylie - Protected Area

Existing Zoning & Rezoning Request



- Requested R-3 LLWPA from B-2 LLWPA
- Zoning Classification
- Single Family
- Office
- Business
- General Industrial
- Mixed Use



0 250 500 1,000 Feet

Map Created 12/20/2017