

2017-204: Ed Zepa

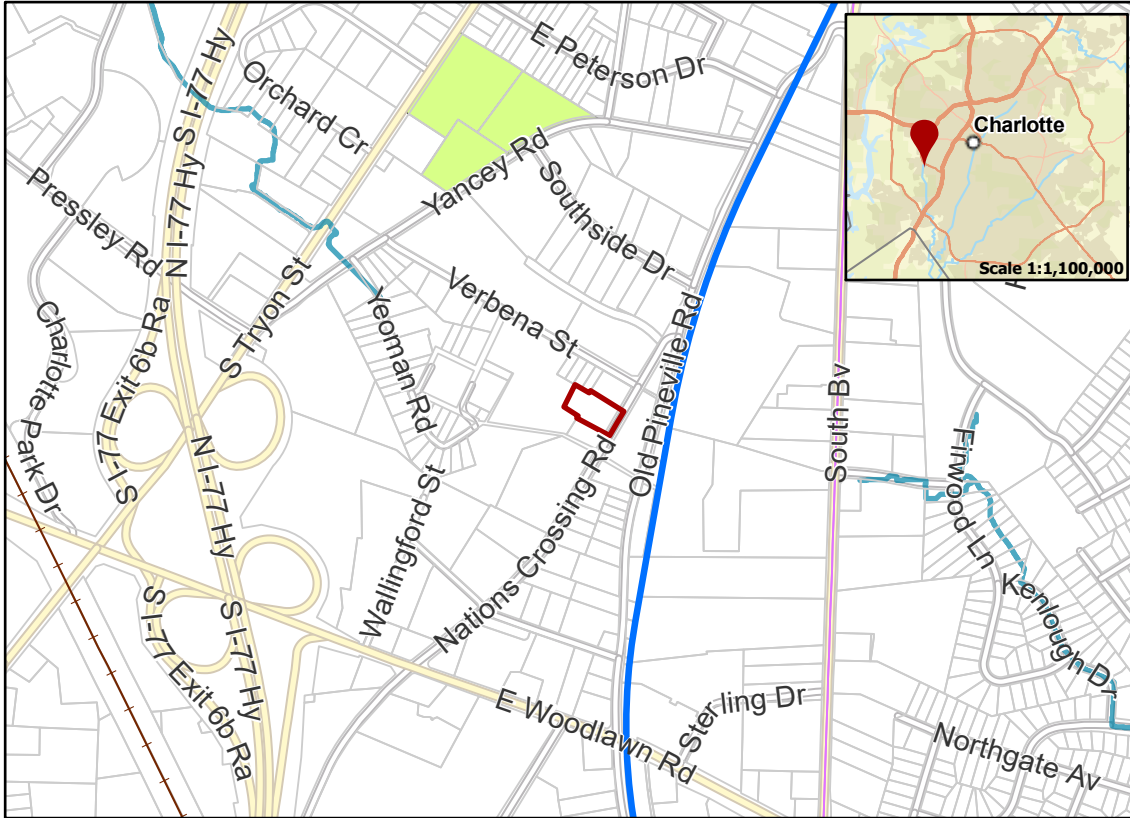
Current Zoning MUDD-O (Mixed Use Development District-Optional)

Requested Zoning I-2 (General Industrial)

Approximately 0.952 acres

Location of Requested Rezoning

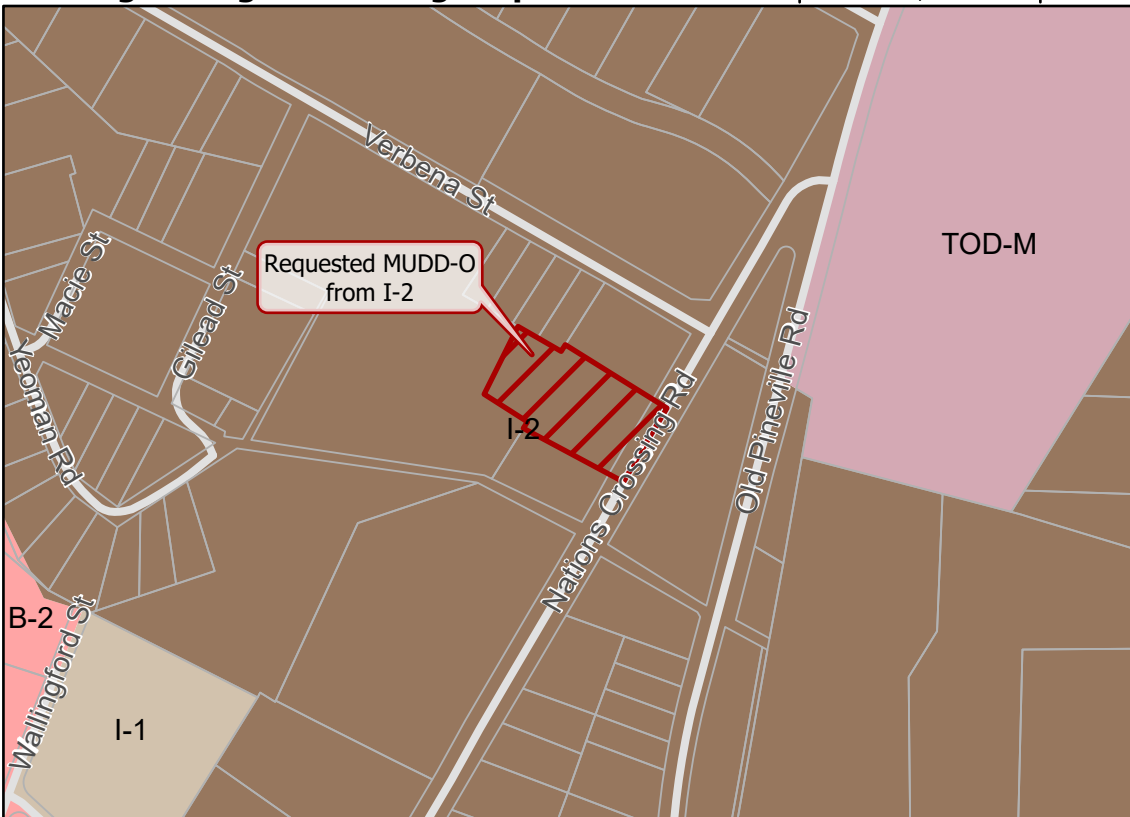
Rezoning Map



- 2017-204
- Inside City Limits
- Parcel
- LYNX Blue Line
- Railway
- Streams
- Transit Supportive Overlay
- City Council District**
- 3-LaWana Mayfield

0 0.13 0.25 Miles

Existing Zoning & Rezoning Request



- Requested MUDD-O from I-2
- Zoning Classification**
- Business
- Light Industrial
- General Industrial
- Transit-Oriented

0 250 500 1,000 Feet



Map Created 12/21/2017