

2018-030:JV Transport Inc

Current Zoning I-1 (Light Industrial)

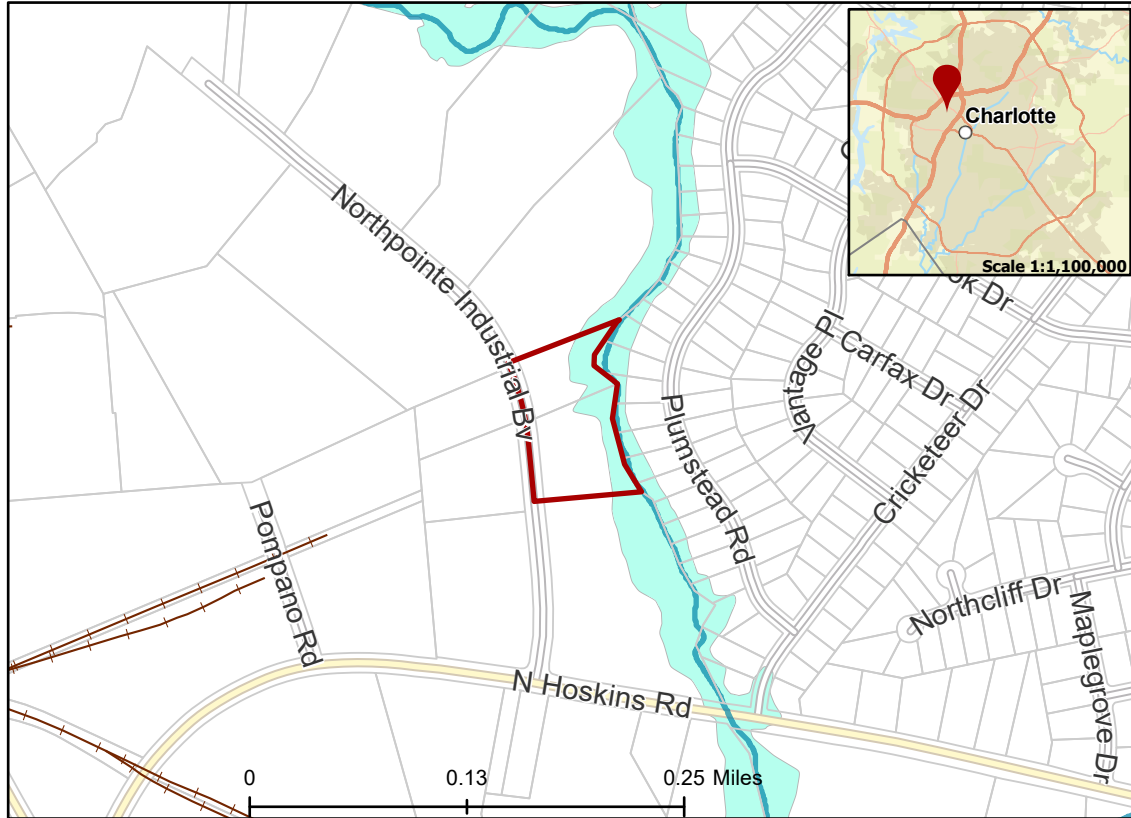
Requested Zoning I-2(CD) (General Industrial, Conditional)

Approximately 2.75 acres

Rezoning Map



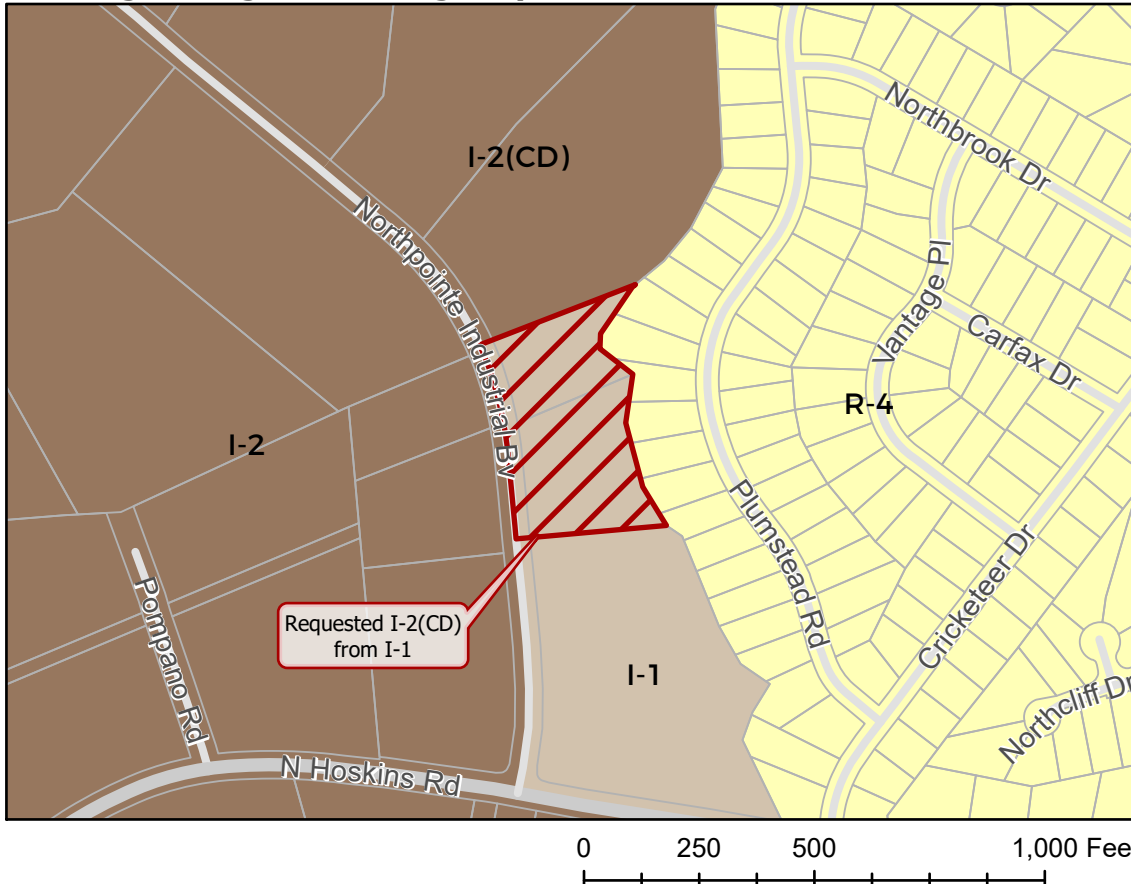
Location of Requested Rezoning



- 2018-030
- Inside City Limits
- Parcel
- Railway
- Streams
- FEMA Flood Plain
- City Council District
- 2-Justin Harlow



Existing Zoning & Rezoning Request



- Requested I-2(CD) from I-1
- Zoning Classification
- Single Family
- Light Industrial
- General Industrial



Map Created 3/2/2018