

**2018-157: O'Leary Group Business Park LLC**

**Current Zoning** I-2 (CD) (General Industrial, Conditional)

B-2 (General Business) I-1 (Light Industrial)

**Requested Zoning** I-2 (General Industrial)

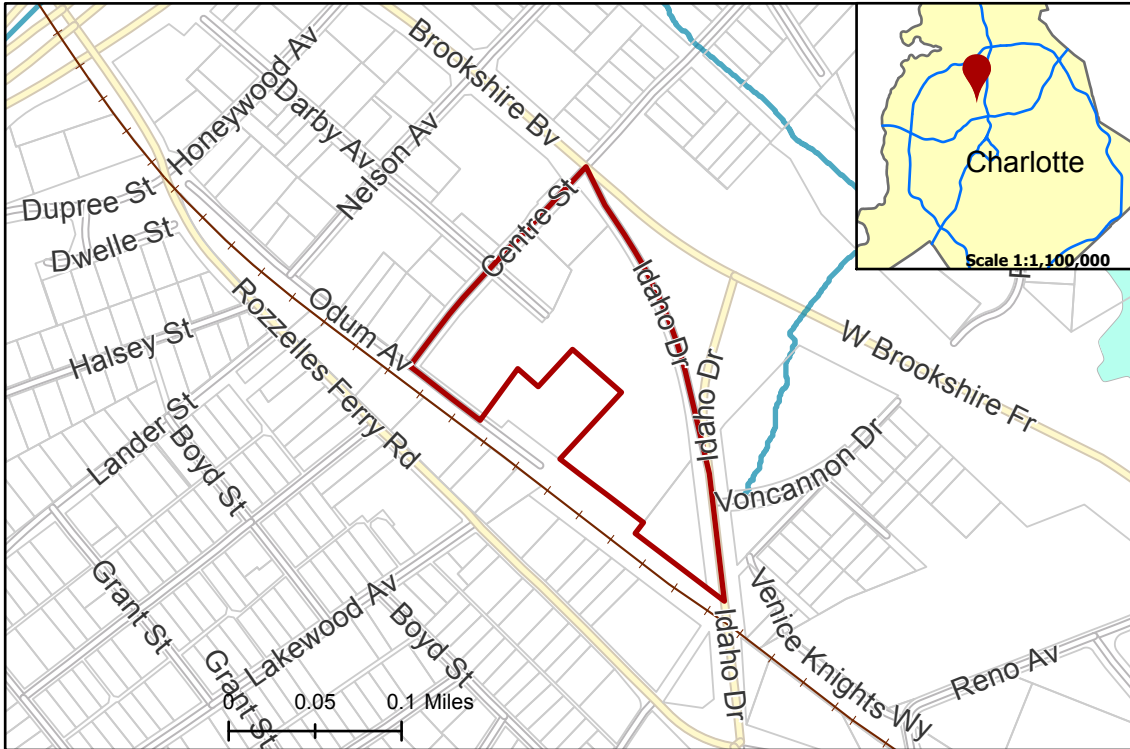
Approximately 9.05 acres

**Location of Requested Rezoning**

**Rezoning Map**



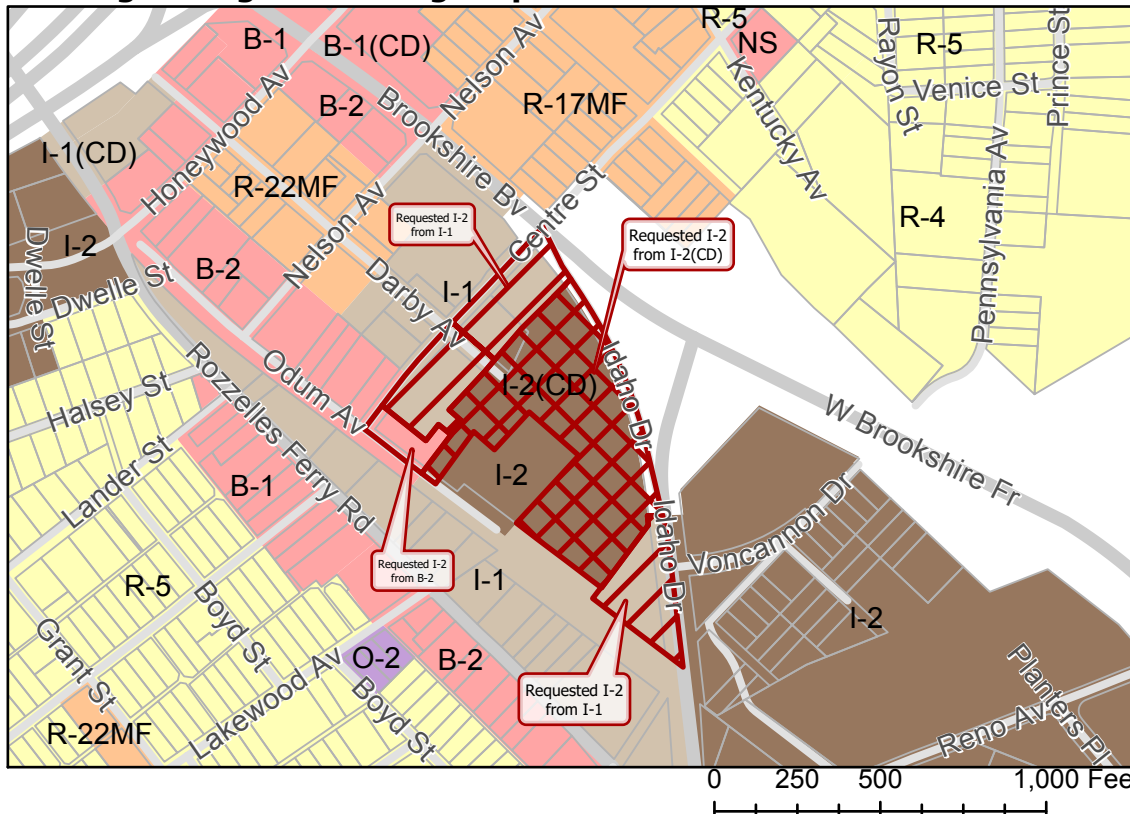
**CHARLOTTE**  
PLANNING, DESIGN  
& DEVELOPMENT



- 2018-157
- Inside City Limits
- Parcel
- Railway
- Streams
- FEMA Flood Plain
- City Council District**
- 2-Justin Harlow



**Existing Zoning & Rezoning Request**



- Requested I-2 from B-2
- Requested I-2 from I-1
- Requested I-2 from I-2(CD)

**Zoning Classification**

- Single Family
- Multi-Family
- Office
- Business
- Light Industrial
- General Industrial



Map Created 12/7/2018