

**2019-004 : C4 Investments, LLC**

**Current Zoning** INST (Institutional)

**Requested Zoning** R-22MF (Multi-Family Residential)

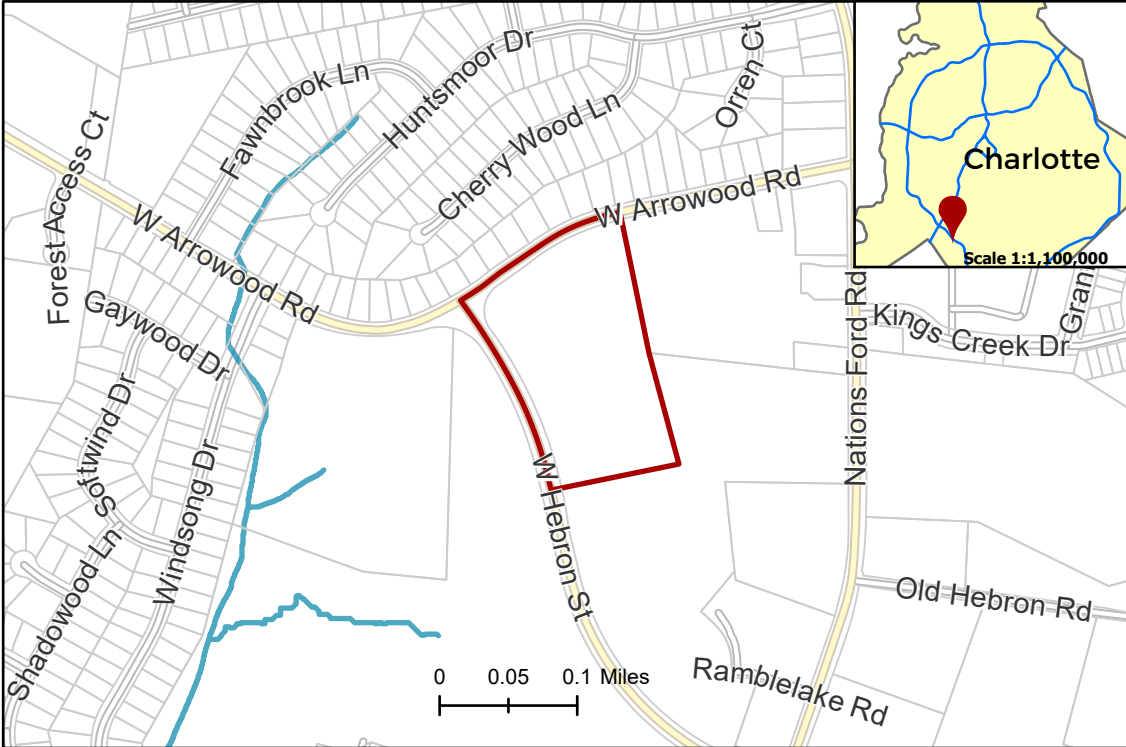
Approximately 10.543 acres

**Location of Requested Rezoning**

**Rezoning Map**



**CHARLOTTE**  
PLANNING, DESIGN  
& DEVELOPMENT

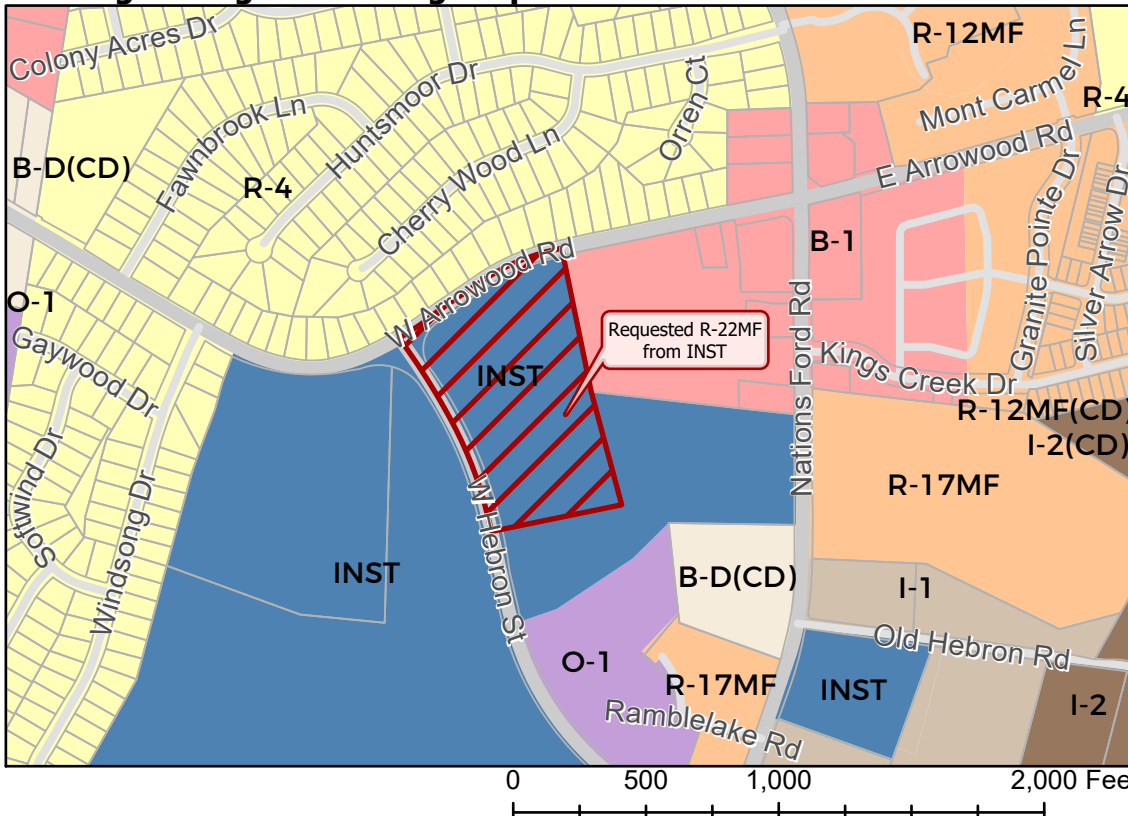


- 2019-004
- Inside City Limits
- Parcel
- Streams

- City Council District
- 3-LaWana Mayfield



**Existing Zoning & Rezoning Request**



- Requested R-22MF from INST

**Zoning Classification**

- Single Family
- Multi-Family
- Institutional
- Office
- Business
- Business-Distribution
- Light Industrial
- General Industrial



Map Created 2/11/2019