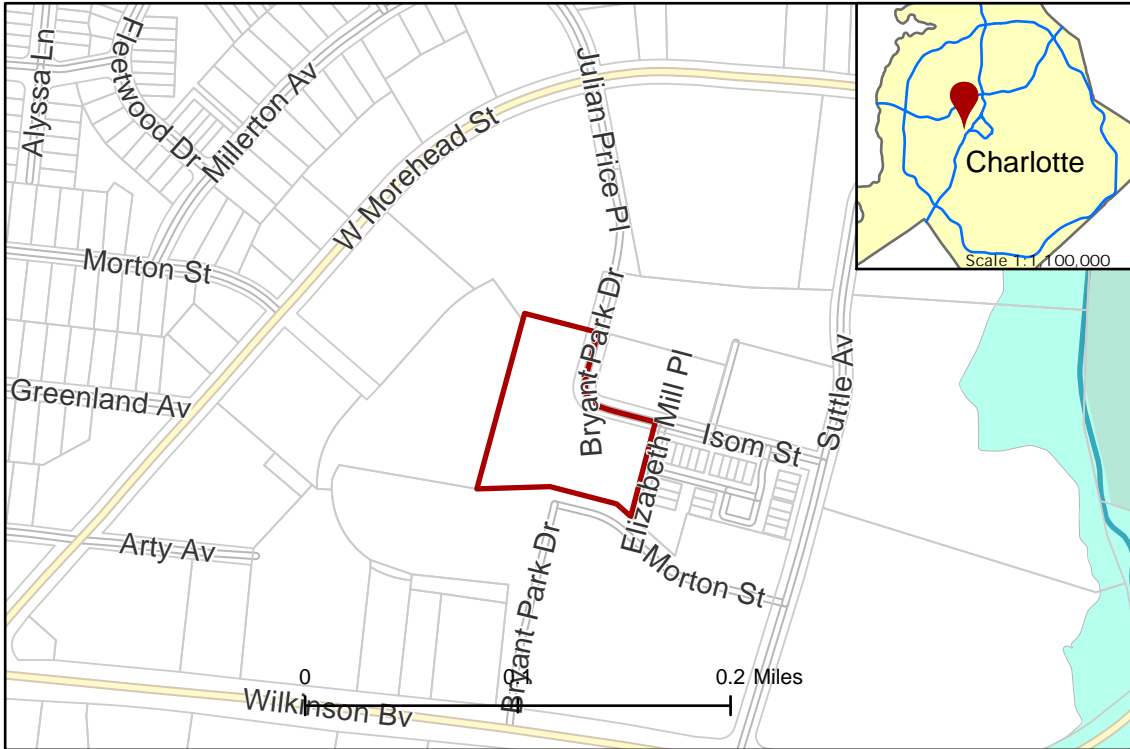


2019-053 : Hopper Communities

Current Zoning O-1 (Office) I-2 (General Industrial)
 Requested Zoning MUDD (O) (Mixed Use Development, Optional)

Approximately 2.653 acres
 Location of Requested Rezoning

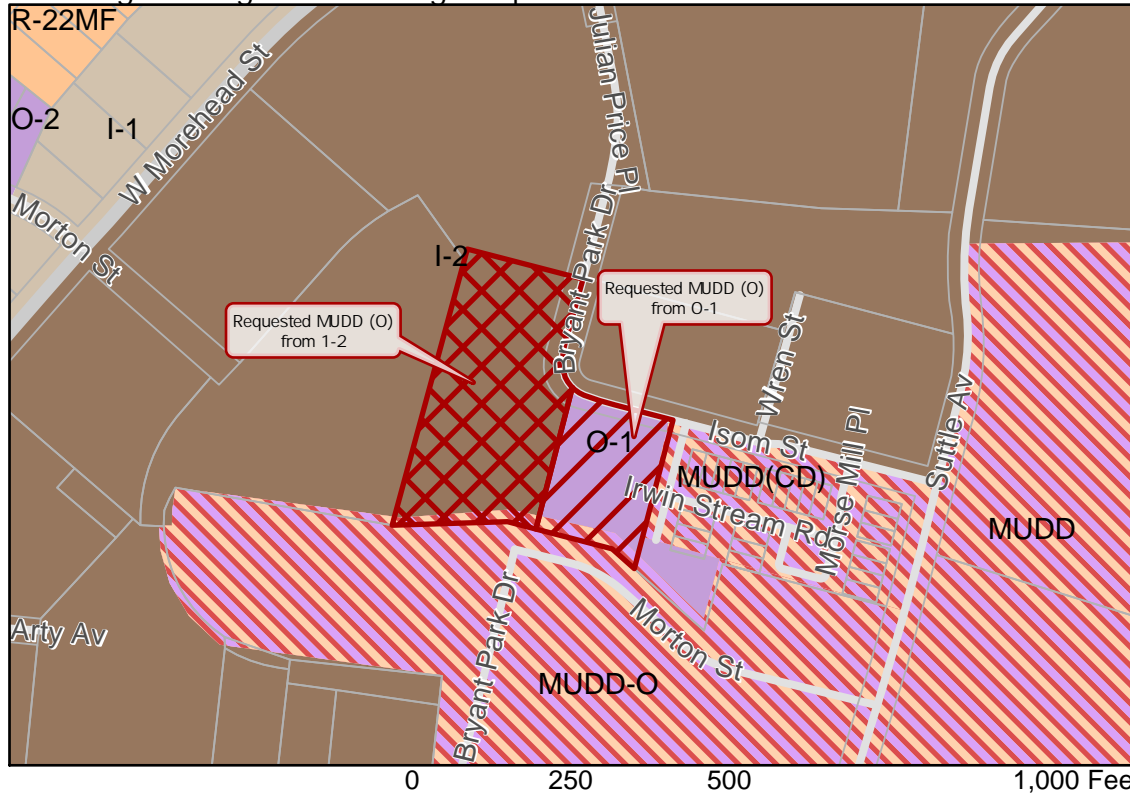
Rezoning Map



- 2019-053
- Inside City Limits
- Parcel
- Buildings
- Streams
- FEMA Flood Plain
- West Morehead
- City Council District
- 3-LaWana Mayfield



Existing Zoning & Rezoning Request



- Requested MUDD (O) from O-1
- Requested MUDD (O) from 1-2
- Zoning Classification
- Multi-Family
- Office
- Light Industrial
- General Industrial
- Mixed Use



Map Created 4/11/2019