

2019-090: Culp Road Materials, LLC

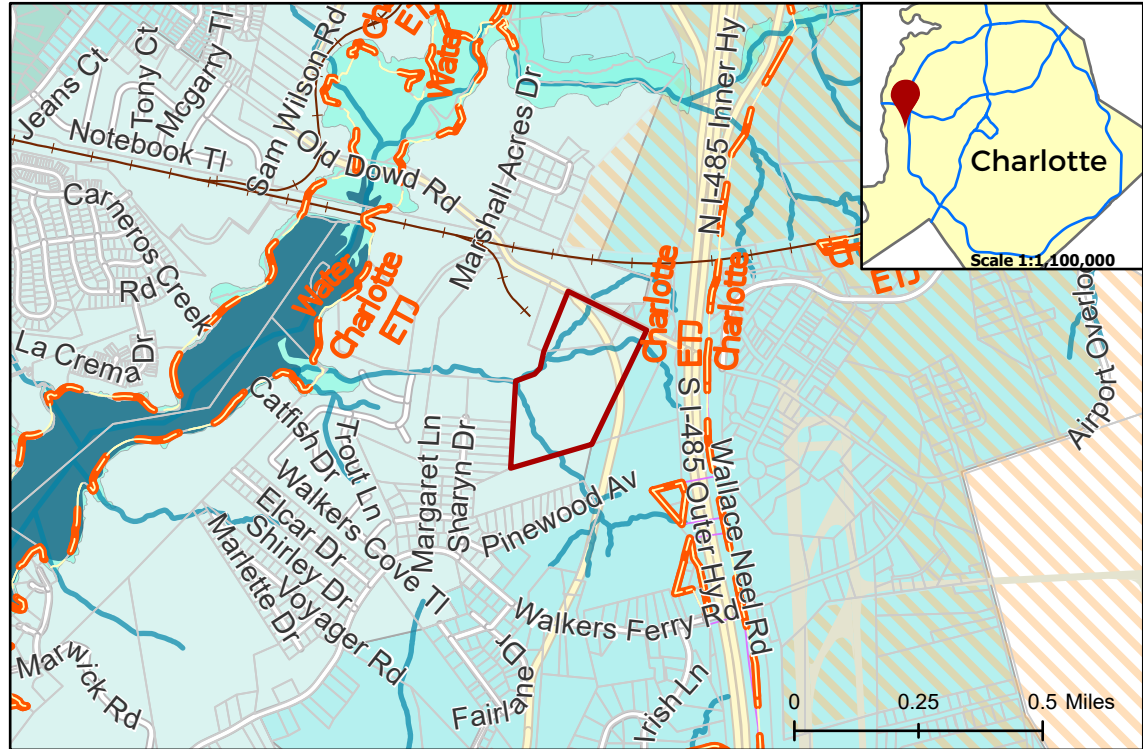
Current Zoning R-3 LLWCA (Single Family Residential, Lower Lake Wylie Critical Area)

R-MH LLWCA (Residential Manufactured Housing, Lower Lake Wylie Critical Area)

Requested Zoning I-2(CD) LLWCA (General Industrial, Conditional, Lower Lake Wylie Critical Area) with 5-year vested rights

Approximately 34.6 acres

Location of Requested Rezoning



Rezoning Map

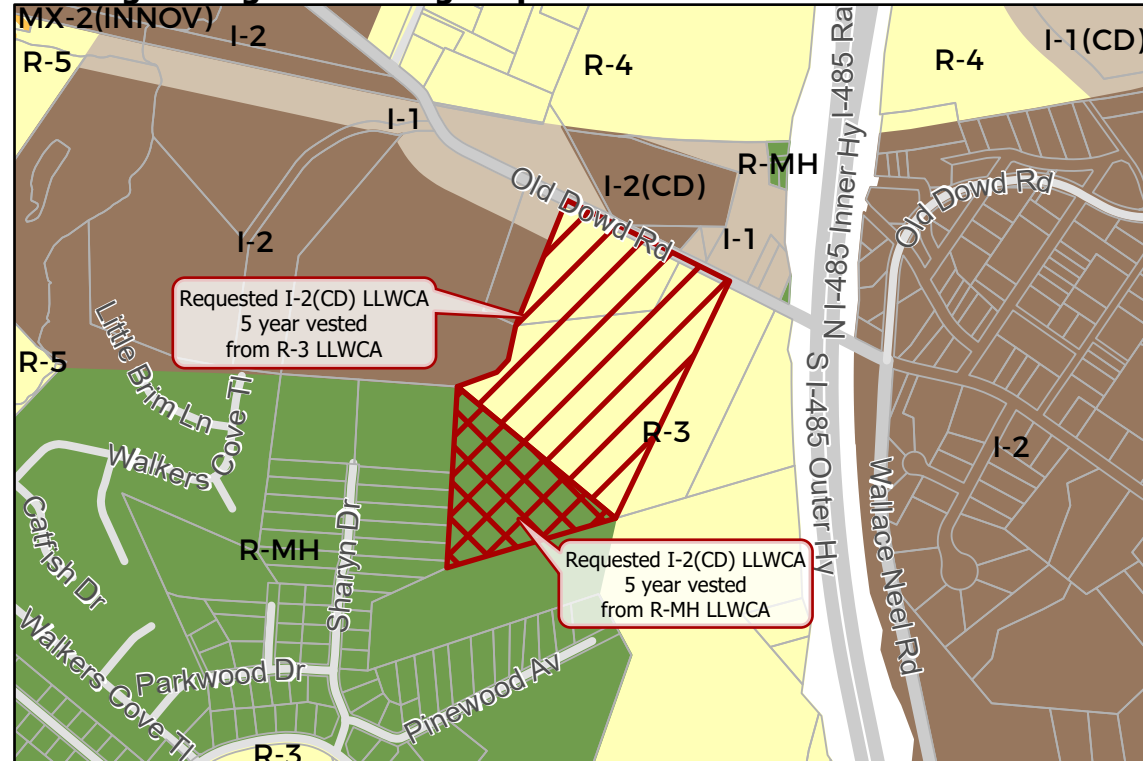


CHARLOTTE
PLANNING, DESIGN
& DEVELOPMENT

- 2019-090
 - Outside City Limits
 - Parcel
 - Railway
 - Streams
 - Airport
 - FEMA Flood Plain
 - Airport Noise Overlay
- Watershed Overlay**
- Lake Wylie - Critical Area
 - Lake Wylie - Protected Area
 - Lower Lake Wylie - Critical Area
 - Lower Lake Wylie - Protected Area



Existing Zoning & Rezoning Request



- Requested I-2(CD) LLWCA 5 year vested from R-3 LLWCA
 - Requested I-2(CD) LLWCA 5 year vested from R-MH LLWCA
- Zoning Classification**
- Single Family
 - Manufactured Home
 - Mixed Residential
 - Business
 - Light Industrial
 - General Industrial



Map Created 7/8/2019