

**2020-007: Erwin Capital**

**Current Zoning** B-1(CD) (Neighborhood Business, Conditional)

**Requested Zoning** B-1(CD) SPA (Neighborhood Business, Conditional, Site Plan Amendment)

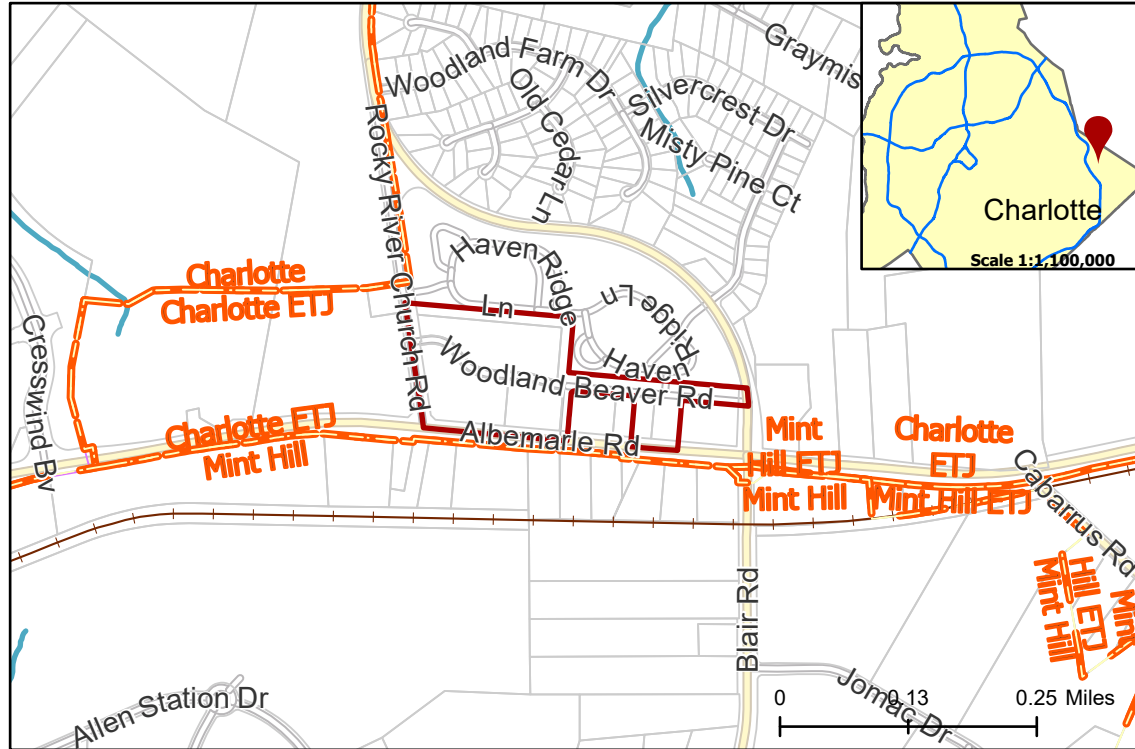
Approximately 13.211 acres

**Location of Requested Rezoning**

**Rezoning Map**



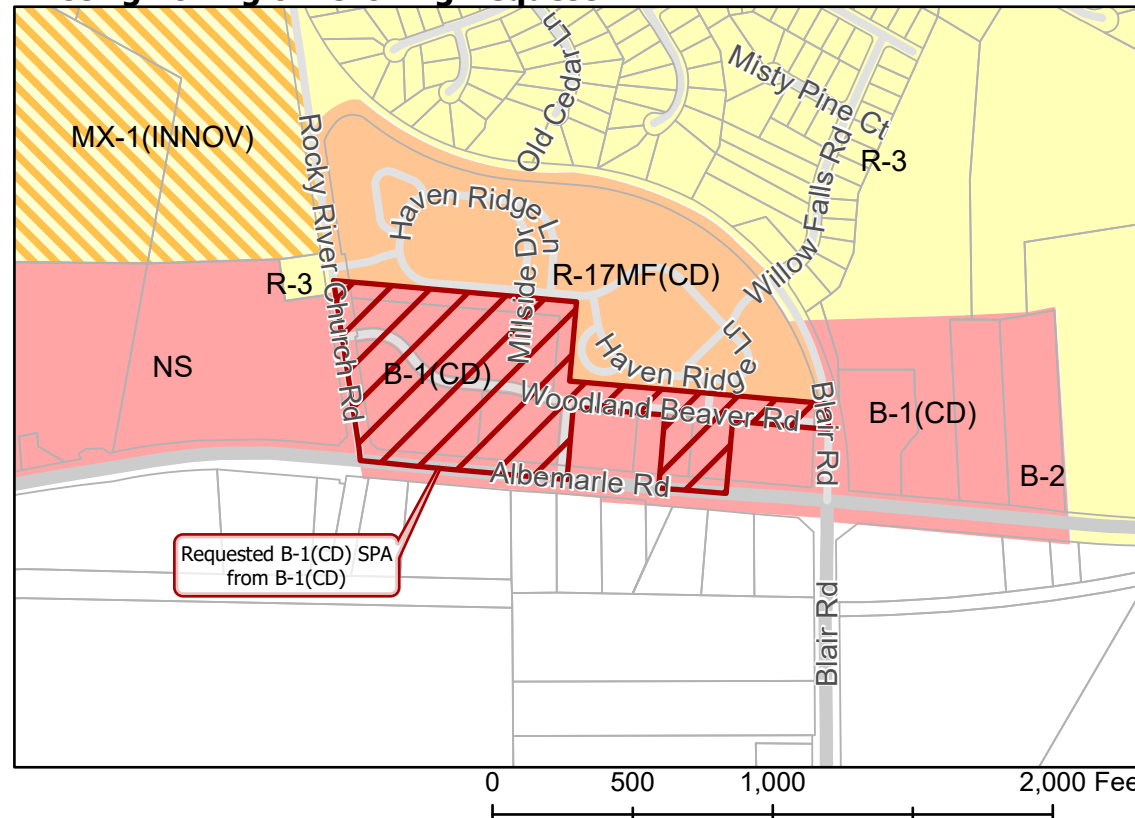
**CHARLOTTE**  
PLANNING, DESIGN  
& DEVELOPMENT



- 2020-007
- Outside City Limits
- Parcel
- Railway
- Streams



**Existing Zoning & Rezoning Request**



- Requested B-1(CD) SPA from B-1(CD)
- Zoning Classification**
- Single Family
  - Multi-Family
  - Mixed Residential
  - Business



Map Created 2/12/2020