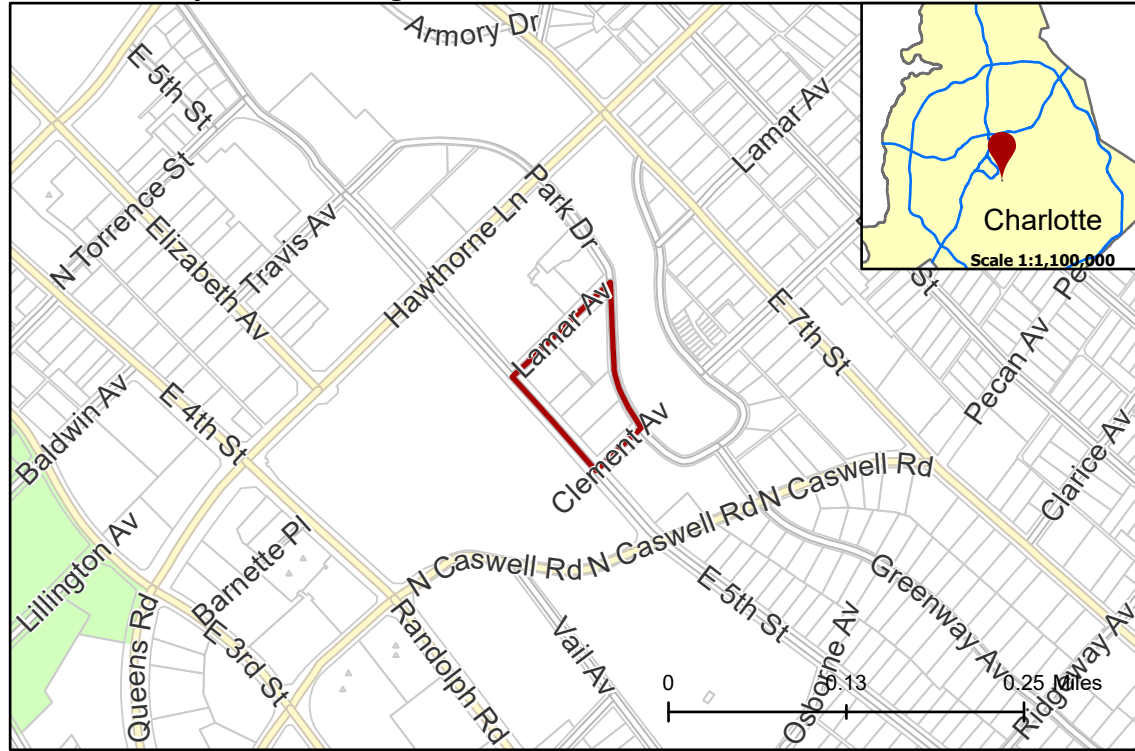


2020-083: The Keith Corporation

Current Zoning R-43MF (Multi-Family Residential), O-2 (Office)
Requested Zoning MUDD-O (Mixed Use Development, Optional)

Approximately 2.397 acres
Location of Requested Rezoning



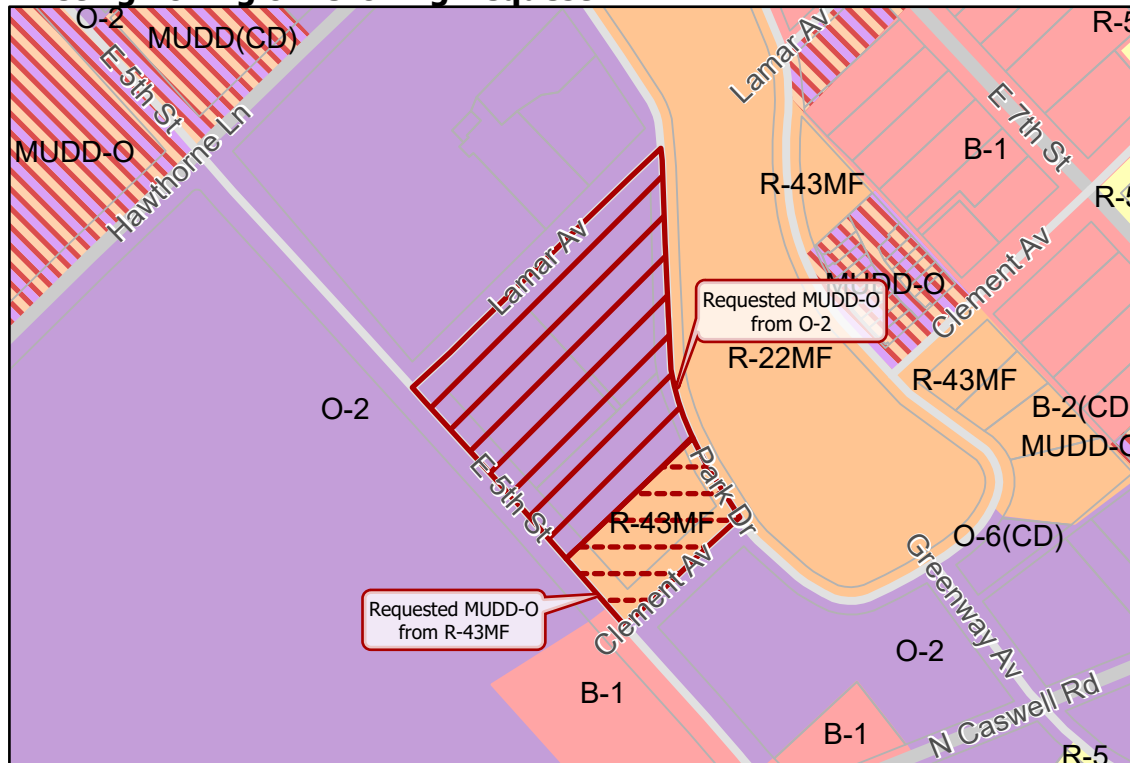
Rezoning Map



- Inside City Limits
- Parcel
- Railway
- Midtown Morehead Cherry
- City Council District**
- 1-Larken Egleston



Existing Zoning & Rezoning Request



- Requested MUDD-O from O-2
- Requested MUDD-O from R-43MF
- Zoning Classification**
- Single Family
- Multi-Family
- Office
- Business
- Mixed Use

0 250 500 1,000 Feet

N
 Map Created 5/14/2020