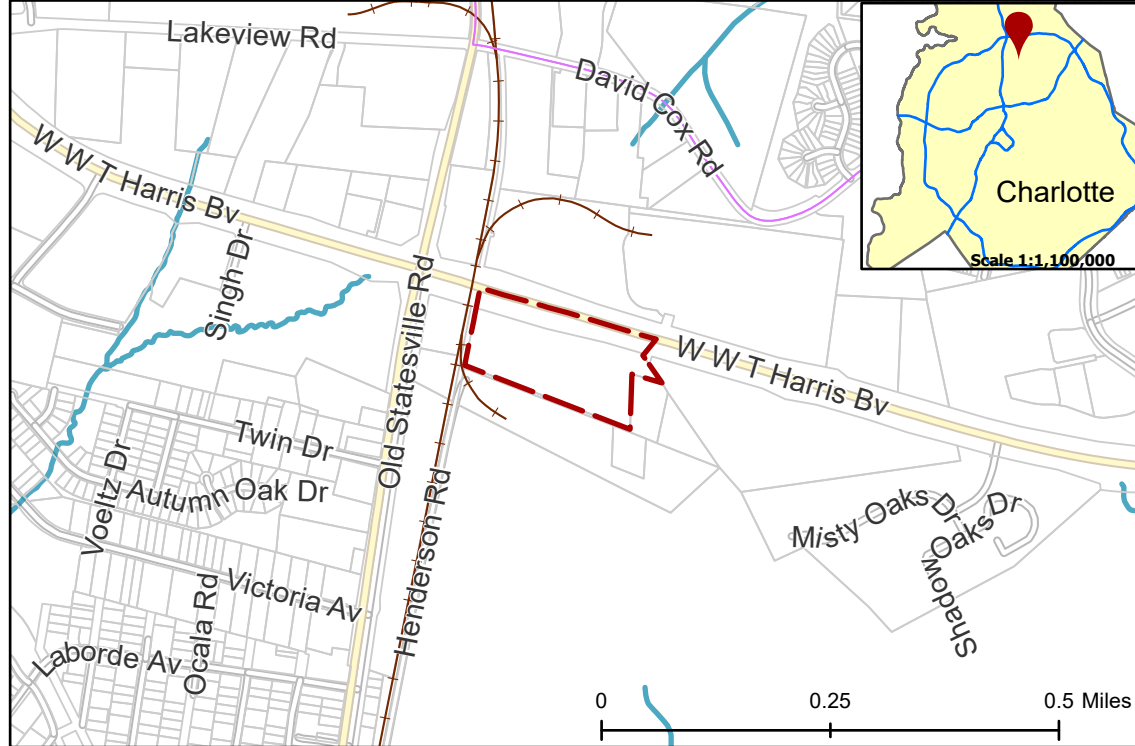


2020-136: Holly Springs Realty, LLC

Current Zoning I-1 (Light Industrial)
Requested Zoning I-2 (General Industrial)

Approximately 8.95 acres

Location of Requested Rezoning



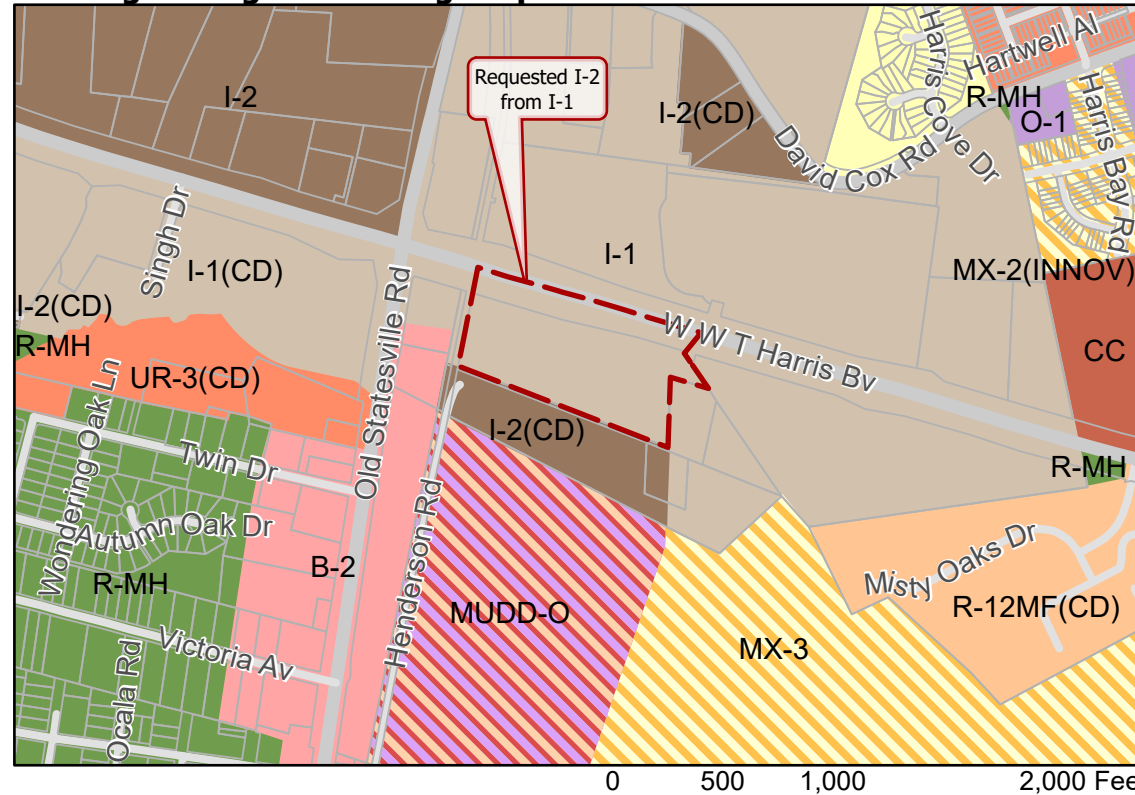
Rezoning Map



- 2020-136
- Inside City Limits
- Parcel
- Railway
- Streams
- City Council District**
- 2-Malcolm Graham



Existing Zoning & Rezoning Request



- Requested I-2 from I-1
- Zoning Classification**
- Single Family
- Manufactured Home
- Multi-Family
- Urban Residential
- Mixed Residential
- Office
- Business
- Commercial Center
- Light Industrial
- General Industrial
- Mixed Use



Map Created 9/15/2020