

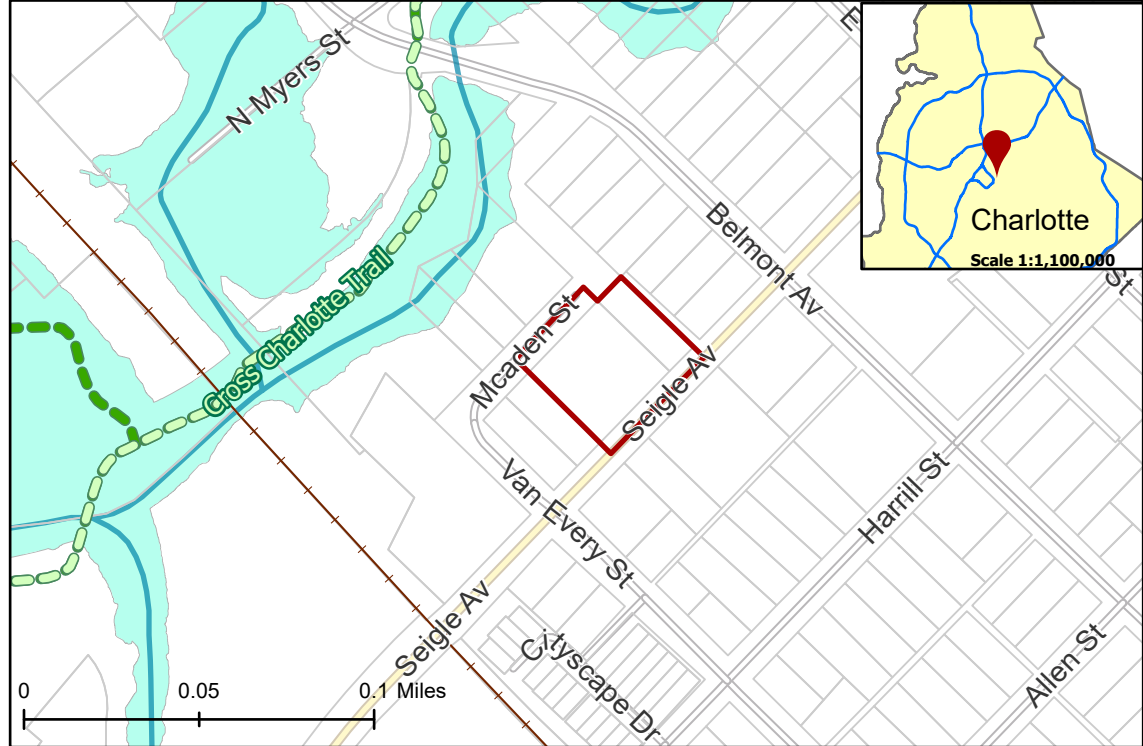
2020-178: Orsini Teresa M

Current Zoning MUDD-O (Mixed Use Development District, Optional), I-2 (General Industrial)

Requested Zoning MUDD-O, SPA (Mixed Use Development District, Optional, Site Plan Amendment)

Approximately 0.7 acres

Location of Requested Rezoning



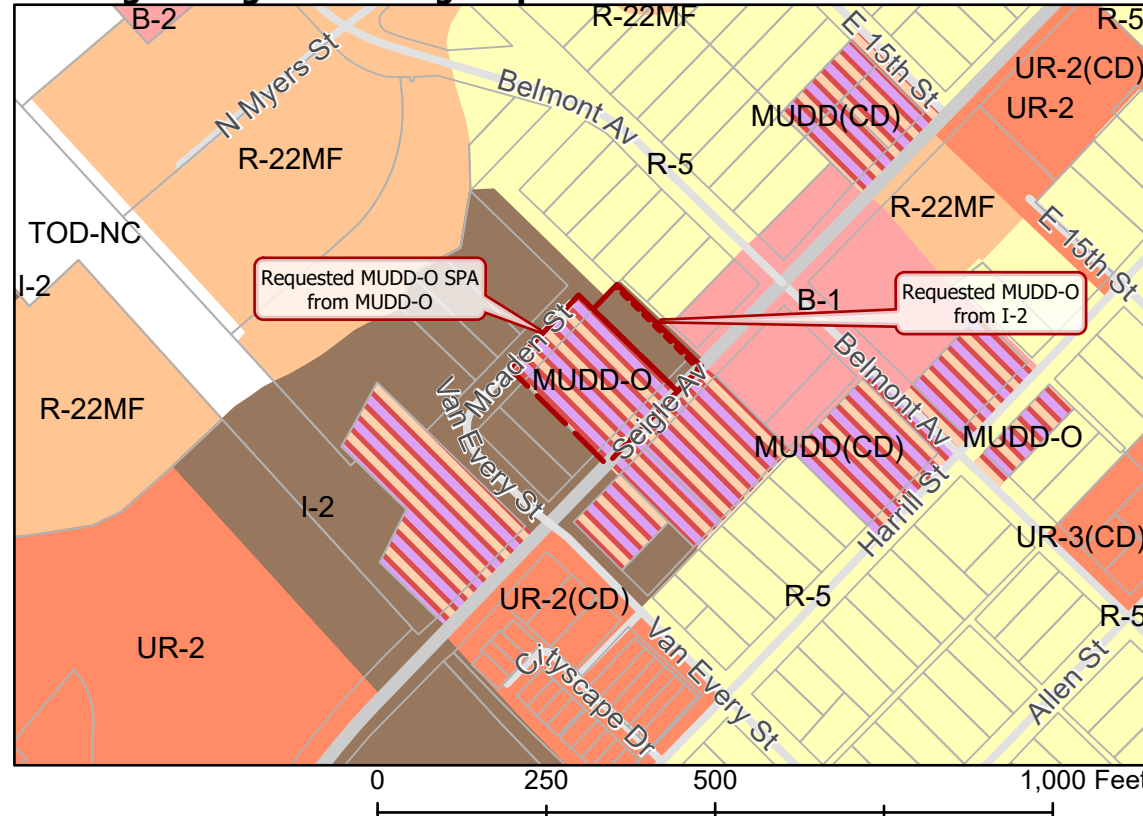
Rezoning Map



- 2020-178
- Inside City Limits
- Parcel
- Cross Charlotte Trail
- Greenway
- Railway
- Streams
- FEMA Flood Plain
- City Council District**
- 1-Larken Egleston



Existing Zoning & Rezoning Request



- Requested MUDD-O SPA from MUDD-O
- Requested MUDD-O SPA from I-2

Zoning Classification

- Single Family
- Multi-Family
- Urban Residential
- Business
- General Industrial
- Mixed Use



Map Created 11/23/2020