

# 2021-172: Browder Group Real Estate, LLC

# Rezoning Map



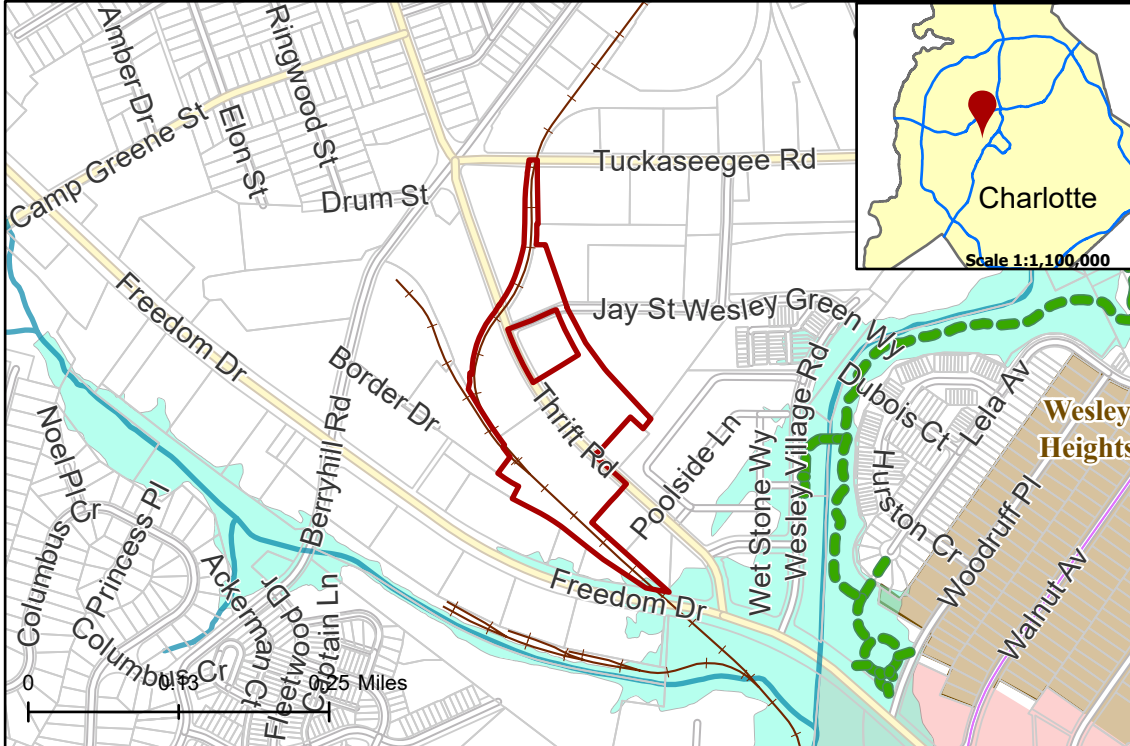
**CHARLOTTE**  
PLANNING, DESIGN & DEVELOPMENT

**Current Zoning** I-2 (General Industrial)

**Requested Zoning** MUDD-O (Mixed Use Development District, Optional)

Approximately 10.79 acres

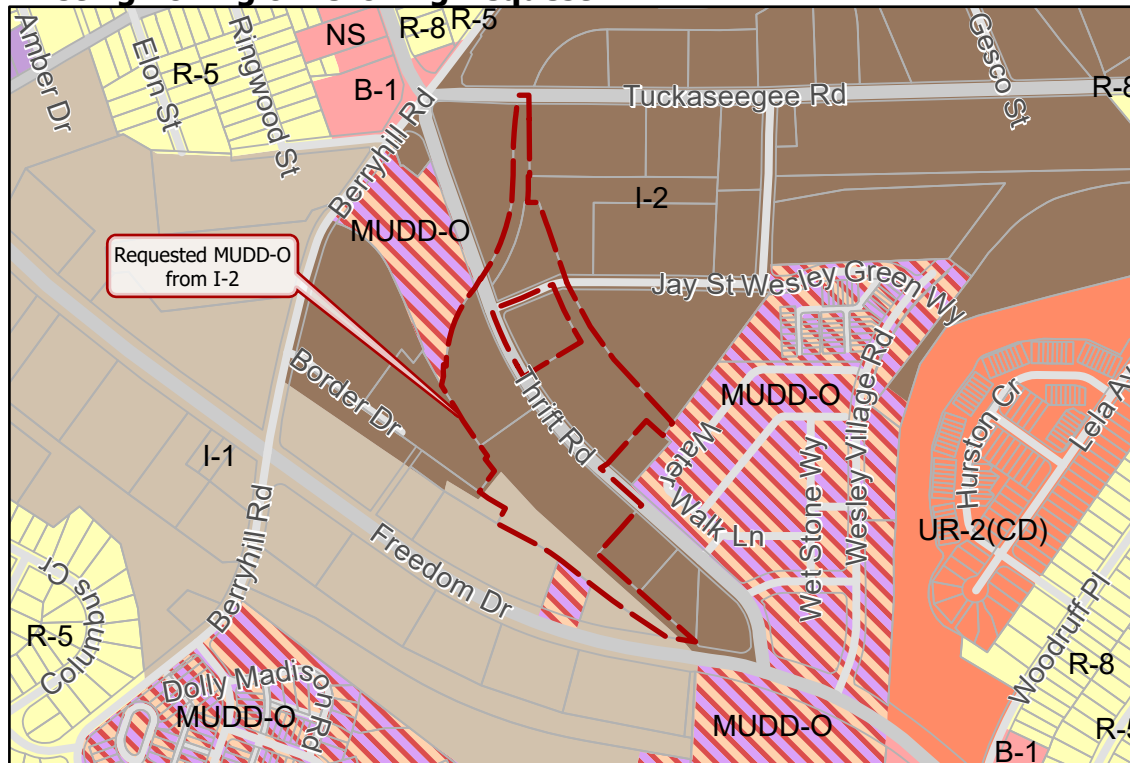
## Location of Requested Rezoning



- 2021-172
- Inside City Limits
- Parcel
- Greenway
- Railway
- Streams
- FEMA Flood Plain
- West Morehead
- Historic Districts
- City Council District**
- 3-Victoria Watlington



## Existing Zoning & Rezoning Request



- Requested MUDD-O from I-2
- Zoning Classification**
- Single Family
- Urban Residential
- Office
- Business
- Light Industrial
- General Industrial
- Mixed Use



Map Created 10/28/2021