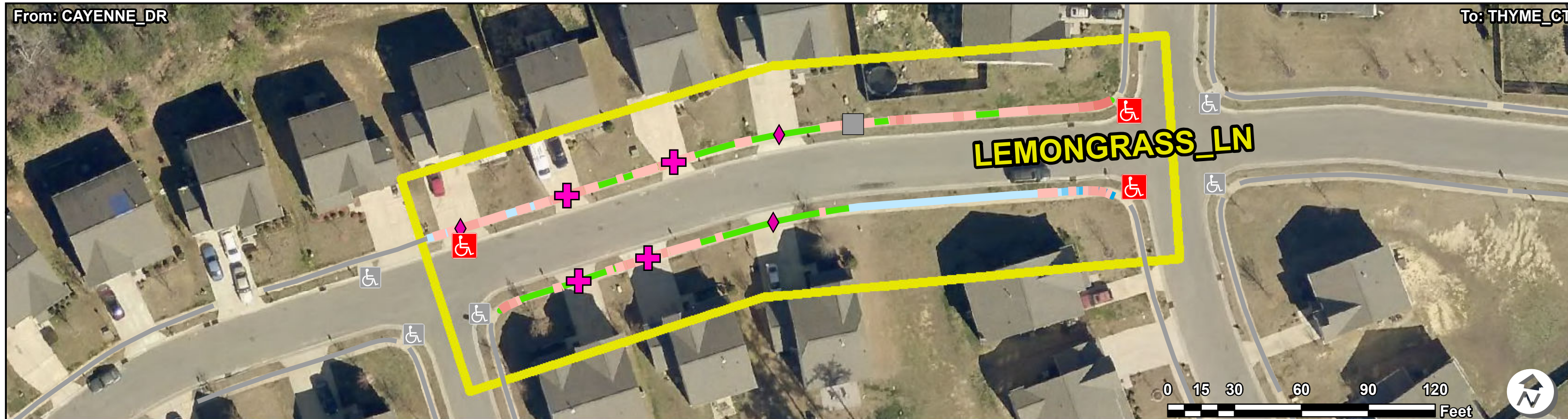


From: CAYENNE\_DR

To: THYME\_CT



**ADA Survey Summary**

**ADA Compliance Cost Estimate \***

**Intersection Inventory & Compliance Cost Estimate**

Item Description	Quantity
1 Heavings less than 1"	5 EA
2 Heavings 1" or greater	0 EA
3 Uneven Heavings	0 EA
4 Heaving Clusters	1.784 SY
5 Sidewalk Joint Gaps	0 EA
6 Miscellaneous Obstruction	0 EA
7 Missing Sidewalk Obstruction	0 EA
8 Other Obstruction	0 EA
9 Pole Post Hydrant Obstruction	0 EA
10 Ponding Obstruction	0 EA
11 Sidewalk Joint Obstruction	0 EA
12 Sign Obstruction	1 EA
13 Storm Grate Obstruction	0 EA
14 Transit Obstruction	0 EA
15 Traffic Obstruction	0 EA
16 Tree Obstruction	0 EA
17 Utility Obstruction	0 EA
18 Vegetation Obstruction - Low	0 EA
19 Vegetation Obstruction - Overhead	0 EA
20 Commercial Entrance	0 EA
21 Residential Entrance	7 EA
22 Total Sidewalk Length Assessed	593.529 LF
23 Average Sidewalk Width	48 IN
24 No Sidewalk on Block (Approx.)	0 LF
25 Missing Sidewalk Gaps (Approx.)	0 LF
26 Poor Surface Condition (Approx.)	0 LF
27 Buried Sidewalk (Approx.)	0 LF

Item Description	Quantity	Unit Price	Item Cost
1 Heavings less than 1"	1 EA	\$ 100.00	\$ 100.00
2 Heavings 1" or greater	0 EA	\$ 400.00	\$ 0.00
3 Uneven Heavings	0 EA	\$ 400.00	\$ 0.00
4 Heaving Clusters	1.784 SY	\$ 75.00	\$ 134.00
5 Sidewalk Joint Gaps	0 EA	\$ 200.00	\$ 0.00
6 Miscellaneous Obstruction	0 EA	\$ 1500.00	\$ 0.00
7 Missing Sidewalk Obstruction	0 EA	\$ 200.00	\$ 0.00
8 Other Obstruction	0 EA	\$ 500.00	\$ 0.00
9 Pole Post Hydrant Obstruction	0 EA	\$ 5000.00	\$ 0.00
10 Ponding Obstruction	0 EA	\$ 400.00	\$ 0.00
11 Sidewalk Joint Obstruction	0 EA	\$ 100.00	\$ 0.00
12 Sign Obstruction	1 EA	\$ 150.00	\$ 150.00
13 Storm Grate Obstruction	0 EA	\$700.00	\$ 0.00
14 Transit Obstruction	0 EA	\$500.00	\$ 0.00
15 Traffic Obstruction	0 EA	\$2000.00	\$ 0.00
16 Tree Obstruction	0 EA	\$500.00	\$ 0.00
17 Utility Obstruction	0 EA	\$1500.00	\$ 0.00
18 Vegetation Obstruction - Low	0 EA	\$150.00	\$ 0.00
19 Vegetation Obstruction - Overhead	0 EA	\$150.00	\$ 0.00
20 Commercial Entrance (within slope violation)	0 EA	\$ 5000.00	\$ 0.00
21 Residential Entrance (within slope violation)	4 EA	\$ 3000.00	\$ 12000.00
22 Running Slope Violations**	3.215 SY	\$ 75.00	\$ 241.00
23 Cross Slope Violations	84.641 SY	\$ 75.00	\$ 6348.00
24 Running and Cross Slope Violations	23.36 SY	\$ 75.00	\$ 1752.00
25 Missing Sidewalk Gaps (Approx.)	0 LF	\$ 41.67	\$ 0.00
26 Poor Surface Condition (Approx.)	0 LF	\$ 41.67	\$ 0.00
27 Buried Sidewalk (Approx.)	0 LF	\$ 41.67	\$ 0.00
<b>Sidewalk SubTotal:</b>			<b>\$ 20725.00</b>

Item Description	Total Count	Non Compliant Count	Cost
Curb Ramps	3	3	\$ 7900.00
Island Curb Cuts	0	0	\$ 0.00
Signal Push Buttons	0	0	\$ 0.00
Transit Stops	0	0	\$ 0.00
Railroad Crossings	0	0	\$ 0.00
Accessible Parking Spaces	0	0	\$ 0.00
<b>Intersection SubTotal:</b>			<b>\$ 7900.00</b>

**Corridor Total: \$ 28625.00**

- Curb Ramps - Compliant
- Curb Ramps - Non Compliant
- Island Curb Cuts - Compliant
- Island Curb Cuts - Non Compliant
- Signals - Compliant
- Signals - Non Compliant
- Transit Stops - Compliant
- Transit Stops - Non Compliant
- Railroad Crossings - Compliant
- Railroad Crossings - Non Compliant
- Accessible Parking - Compliant
- Accessible Parking - Non Compliant
- Curb Ramps - Adjacent
- Island Curb Cuts - Adjacent
- Signals - Adjacent
- Transit Stops - Adjacent
- Railroad Crossings - Adjacent
- Accessible Parking - Adjacent

- Heavings < 1" (Excluded)\*\*\*
  - Heavings ≥ 1" (Excluded)\*\*\*
  - Uneven Heaving (Excluded)\*\*\*
  - Heaving Clusters (Excluded)
  - Sidewalk Joint Gap (Excluded)\*\*\*
  - Miscellaneous Obstruction
  - Missing Sidewalk Obstruction
  - Other Obstruction
  - Pole Post Hydrant Obstruction
  - Ponding Obstruction
  - Sidewalk Joint Obstruction
  - Sign Obstruction
  - Storm Grate Obstruction
  - Transit Obstruction
  - Traffic Obstruction
  - Tree Obstruction
  - Utility Obstruction
  - Vegetation Obstruction - Low
  - Vegetation Obstruction - Overhead
  - Sidewalk Collection Path
  - Adjacent Sidewalk Collection Path
  - Buried Sidewalk
  - Sidewalk Not Surveyed
  - Missing Sidewalk Gap
  - No Sidewalk on Block
- Cross Slope**
- 2 - 3%
  - 3.01 - 4%
  - 4.01 - 5%
  - 5.01% - 6%
  - 6.01 - 7%
  - 7.01 - 8%
  - 8.01 - 9%
  - 9.01 - 10%
  - 10.01 - 12%
  - > 12%
- Running Slope**
- 5 - 8.33%
  - 8.34% - 10%
  - 10.01 - 12.5%
  - > 12.5%

\*Note: ADA pedestrian issues have been identified and quantified in the ADA Survey Summary. There are instances where multiple issues can be resolved with a single corrective measure. The ADA Compliance Cost Estimate reflects the best estimation of quantities and cost to resolve all identified ADA issues.  
\*\*Note: Additional investigation may be warranted when sidewalk running slope issues exist within the right-of-way.  
\*\*\*Note: Excluded items are violations that occur in areas with slope violations and have been excluded from the cost estimate.