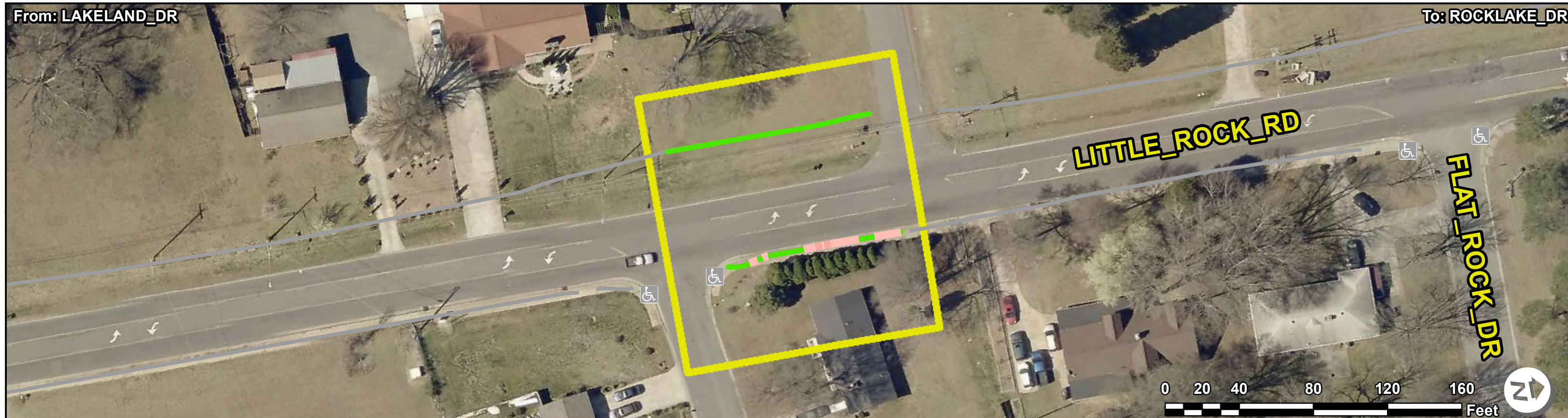


From: LAKELAND_DR

To: ROCKLAKE_DR



ADA Survey Summary

| Item Description | Quantity |
|--------------------------------------|------------|
| 1 Heavings less than 1" | 1 EA |
| 2 Heavings 1" or greater | 0 EA |
| 3 Uneven Heavings | 0 EA |
| 4 Heaving Clusters | 0 SY |
| 5 Sidewalk Joint Gaps | 0 EA |
| 6 Miscellaneous Obstruction | 0 EA |
| 7 Missing Sidewalk Obstruction | 0 EA |
| 8 Other Obstruction | 0 EA |
| 9 Pole Post Hydrant Obstruction | 0 EA |
| 10 Ponding Obstruction | 0 EA |
| 11 Sidewalk Joint Obstruction | 0 EA |
| 12 Sign Obstruction | 0 EA |
| 13 Storm Grate Obstruction | 0 EA |
| 14 Transit Obstruction | 0 EA |
| 15 Traffic Obstruction | 0 EA |
| 16 Tree Obstruction | 0 EA |
| 17 Utility Obstruction | 0 EA |
| 18 Vegetation Obstruction - Low | 0 EA |
| 19 Vegetation Obstruction - Overhead | 0 EA |
| 20 Commercial Entrance | 0 EA |
| 21 Residential Entrance | 0 EA |
| 22 Total Sidewalk Length Assessed | 206.033 LF |
| 23 Average Sidewalk Width | 68 IN |
| 24 No Sidewalk on Block (Approx.) | 0 LF |
| 25 Missing Sidewalk Gaps (Approx.) | 0 LF |
| 26 Poor Surface Condition (Approx.) | 0 LF |
| 27 Buried Sidewalk (Approx.) | 0 LF |

ADA Compliance Cost Estimate *

| Item Description | Quantity | Unit Price | Item Cost |
|--|-----------|------------|-------------------|
| 1 Heavings less than 1" | 1 EA | \$ 100.00 | \$ 100.00 |
| 2 Heavings 1" or greater | 0 EA | \$ 400.00 | \$ 0.00 |
| 3 Uneven Heavings | 0 EA | \$ 400.00 | \$ 0.00 |
| 4 Heaving Clusters | 0 SY | \$ 75.00 | \$ 0.00 |
| 5 Sidewalk Joint Gaps | 0 EA | \$ 200.00 | \$ 0.00 |
| 6 Miscellaneous Obstruction | 0 EA | \$ 1500.00 | \$ 0.00 |
| 7 Missing Sidewalk Obstruction | 0 EA | \$ 200.00 | \$ 0.00 |
| 8 Other Obstruction | 0 EA | \$ 500.00 | \$ 0.00 |
| 9 Pole Post Hydrant Obstruction | 0 EA | \$ 5000.00 | \$ 0.00 |
| 10 Ponding Obstruction | 0 EA | \$ 400.00 | \$ 0.00 |
| 11 Sidewalk Joint Obstruction | 0 EA | \$ 100.00 | \$ 0.00 |
| 12 Sign Obstruction | 0 EA | \$ 150.00 | \$ 0.00 |
| 13 Storm Grate Obstruction | 0 EA | \$700.00 | \$ 0.00 |
| 14 Transit Obstruction | 0 EA | \$500.00 | \$ 0.00 |
| 15 Traffic Obstruction | 0 EA | \$2000.00 | \$ 0.00 |
| 16 Tree Obstruction | 0 EA | \$500.00 | \$ 0.00 |
| 17 Utility Obstruction | 0 EA | \$1500.00 | \$ 0.00 |
| 18 Vegetation Obstruction - Low | 0 EA | \$150.00 | \$ 0.00 |
| 19 Vegetation Obstruction - Overhead | 0 EA | \$150.00 | \$ 0.00 |
| 20 Commercial Entrance (within slope violation) | 0 EA | \$ 5000.00 | \$ 0.00 |
| 21 Residential Entrance (within slope violation) | 0 EA | \$ 3000.00 | \$ 0.00 |
| 22 Running Slope Violations** | 0 SY | \$ 75.00 | \$ 0.00 |
| 23 Cross Slope Violations | 34.584 SY | \$ 75.00 | \$ 2594.00 |
| 24 Running and Cross Slope Violations | 0 SY | \$ 75.00 | \$ 0.00 |
| 25 Missing Sidewalk Gaps (Approx.) | 0 LF | \$ 41.67 | \$ 0.00 |
| 26 Poor Surface Condition (Approx.) | 0 LF | \$ 41.67 | \$ 0.00 |
| 27 Buried Sidewalk (Approx.) | 0 LF | \$ 41.67 | \$ 0.00 |
| Sidewalk SubTotal: | | | \$ 2694.00 |

Intersection Inventory & Compliance Cost Estimate

| Item Description | Total Count | Non Compliant Count | Cost |
|-------------------------------|-------------|---------------------|----------------|
| Curb Ramps | 0 | 0 | \$ 0.00 |
| Island Curb Cuts | 0 | 0 | \$ 0.00 |
| Signal Push Buttons | 0 | 0 | \$ 0.00 |
| Transit Stops | 0 | 0 | \$ 0.00 |
| Railroad Crossings | 0 | 0 | \$ 0.00 |
| Accessible Parking Spaces | 0 | 0 | \$ 0.00 |
| Intersection SubTotal: | | | \$ 0.00 |

Corridor Total: \$ 2694.00

- Curb Ramps - Compliant
- Curb Ramps - Non Compliant
- Island Curb Cuts - Compliant
- Island Curb Cuts - Non Compliant
- Signals - Compliant
- Signals - Non Compliant
- Transit Stops - Compliant
- Transit Stops - Non Compliant
- Railroad Crossings - Compliant
- Railroad Crossings - Non Compliant
- Accessible Parking - Compliant
- Accessible Parking - Non Compliant
- Curb Ramps - Adjacent
- Island Curb Cuts - Adjacent
- Signals - Adjacent
- Transit Stops - Adjacent
- Railroad Crossings - Adjacent
- Accessible Parking - Adjacent

- Heavings < 1" (Excluded)***
 - Heavings ≥ 1" (Excluded)***
 - Uneven Heaving (Excluded)***
 - Heaving Clusters (Excluded)
 - Sidewalk Joint Gap (Excluded)***
 - Miscellaneous Obstruction
 - Missing Sidewalk Obstruction
 - Other Obstruction
 - Pole Post Hydrant Obstruction
 - Ponding Obstruction
 - Sidewalk Joint Obstruction
 - Sign Obstruction
 - Storm Grate Obstruction
 - Transit Obstruction
 - Traffic Obstruction
 - Tree Obstruction
 - Utility Obstruction
 - Vegetation Obstruction - Low
 - Vegetation Obstruction - Overhead
 - Sidewalk Collection Path
 - Adjacent Sidewalk Collection Path
 - Buried Sidewalk
 - Sidewalk Not Surveyed
 - Missing Sidewalk Gap
 - No Sidewalk on Block
- Cross Slope**
- 2 - 3%
 - 3.01 - 4%
 - 4.01 - 5%
 - 5.01% - 6%
 - 6.01 - 7%
 - 7.01 - 8%
 - 8.01 - 9%
 - 9.01 - 10%
 - 10.01 - 12%
 - > 12%
- Running Slope**
- 5 - 8.33%
 - 8.34% - 10%
 - 10.01 - 12.5%
 - > 12.5%

*Note: ADA pedestrian issues have been identified and quantified in the ADA Survey Summary. There are instances where multiple issues can be resolved with a single corrective measure. The ADA Compliance Cost Estimate reflects the best estimation of quantities and cost to resolve all identified ADA issues.
**Note: Additional investigation may be warranted when sidewalk running slope issues exist within the right-of-way.
***Note: Excluded items are violations that occur in areas with slope violations and have been excluded from the cost estimate.