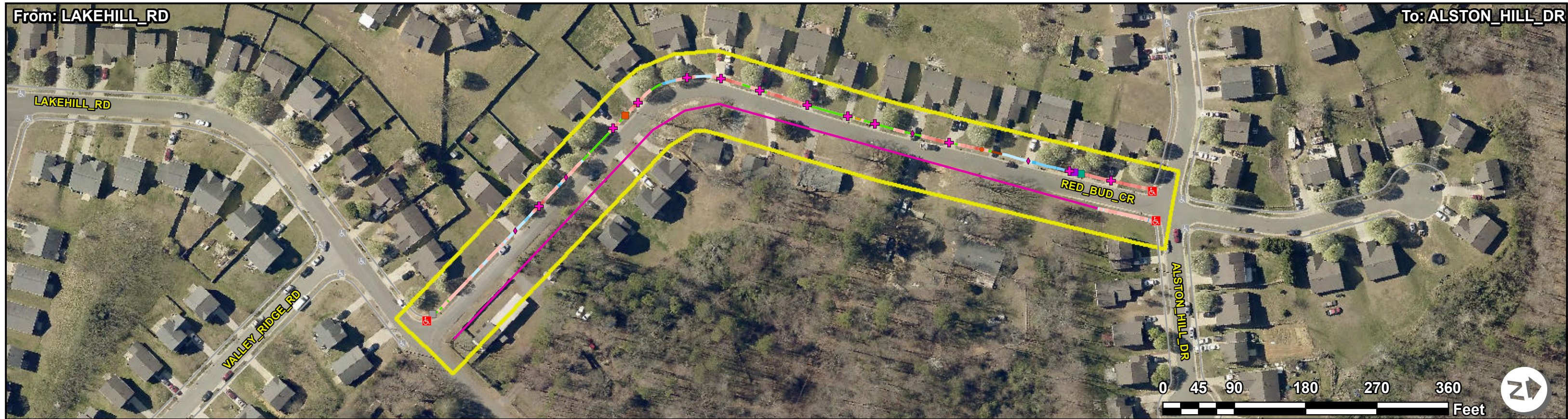


From: LAKEHILL_RD

To: ALSTON_HILL_DR



ADA Survey Summary

Item Description	Quantity
1 Heavings less than 1"	34 EA
2 Heavings 1" or greater	0 EA
3 Uneven Heavings	1 EA
4 Heaving Clusters	0 SY
5 Sidewalk Joint Gaps	0 EA
6 Miscellaneous Obstruction	1 EA
7 Missing Sidewalk Obstruction	0 EA
8 Other Obstruction	0 EA
9 Pole Post Hydrant Obstruction	1 EA
10 Ponding Obstruction	0 EA
11 Sidewalk Joint Obstruction	0 EA
12 Sign Obstruction	1 EA
13 Storm Grate Obstruction	0 EA
14 Transit Obstruction	0 EA
15 Traffic Obstruction	0 EA
16 Tree Obstruction	0 EA
17 Utility Obstruction	0 EA
18 Vegetation Obstruction - Low	0 EA
19 Vegetation Obstruction - Overhead	1 EA
20 Commercial Entrance	0 EA
21 Residential Entrance	16 EA
22 Total Sidewalk Length Assessed	1088.85 LF
23 Average Sidewalk Width	48 IN
24 No Sidewalk on Block (Approx.)	0 LF
25 Missing Sidewalk Gaps (Approx.)	949.541 LF
26 Poor Surface Condition (Approx.)	0 LF
27 Buried Sidewalk (Approx.)	8.006 LF

Item Description	Quantity	Unit Price	Item Cost
1 Heavings less than 1"	12 EA	\$ 100.00	\$ 1200.00
2 Heavings 1" or greater	0 EA	\$ 400.00	\$ 0.00
3 Uneven Heavings	0 EA	\$ 400.00	\$ 0.00
4 Heaving Clusters	0 SY	\$ 75.00	\$ 0.00
5 Sidewalk Joint Gaps	0 EA	\$ 200.00	\$ 0.00
6 Miscellaneous Obstruction	1 EA	\$ 1500.00	\$ 1500.00
7 Missing Sidewalk Obstruction	0 EA	\$ 200.00	\$ 0.00
8 Other Obstruction	0 EA	\$ 500.00	\$ 0.00
9 Pole Post Hydrant Obstruction	1 EA	\$ 5000.00	\$ 5000.00
10 Ponding Obstruction	0 EA	\$ 400.00	\$ 0.00
11 Sidewalk Joint Obstruction	0 EA	\$ 100.00	\$ 0.00
12 Sign Obstruction	1 EA	\$ 150.00	\$ 150.00
13 Storm Grate Obstruction	0 EA	\$ 700.00	\$ 0.00
14 Transit Obstruction	0 EA	\$ 500.00	\$ 0.00
15 Traffic Obstruction	0 EA	\$ 2000.00	\$ 0.00
16 Tree Obstruction	0 EA	\$ 500.00	\$ 0.00
17 Utility Obstruction	0 EA	\$ 1500.00	\$ 0.00
18 Vegetation Obstruction - Low	0 EA	\$ 150.00	\$ 0.00
19 Vegetation Obstruction - Overhead	1 EA	\$ 150.00	\$ 150.00
20 Commercial Entrance (within slope violation)	0 EA	\$ 5000.00	\$ 0.00
21 Residential Entrance (within slope violation)	12 EA	\$ 3000.00	\$ 36000.00
22 Running Slope Violations**	0 SY	\$ 75.00	\$ 0.00
23 Cross Slope Violations	105.72 SY	\$ 75.00	\$ 7929.00
24 Running and Cross Slope Violations	119.921 SY	\$ 75.00	\$ 8994.00
25 Missing Sidewalk Gaps (Approx.)	949.541 LF	\$ 41.67	\$ 39600.00
26 Poor Surface Condition (Approx.)	0 LF	\$ 41.67	\$ 0.00
27 Buried Sidewalk (Approx.)	8.006 LF	\$ 41.67	\$ 440.00
Sidewalk SubTotal:			\$ 60923.00

ADA Compliance Cost Estimate *

Intersection Inventory & Compliance Cost Estimate

Item Description	Total Count	Non Compliant Count	Cost
Curb Ramps	3	3	\$ 8250.00
Island Curb Cuts	0	0	\$ 0.00
Signal Push Buttons	0	0	\$ 0.00
Transit Stops	0	0	\$ 0.00
Railroad Crossings	0	0	\$ 0.00
Accessible Parking Spaces	0	0	\$ 0.00
Intersection SubTotal:			\$ 8250.00

Corridor Total: \$ 108773.00

- Curb Ramps - Compliant
- Curb Ramps - Non Compliant
- Island Curb Cuts - Compliant
- Island Curb Cuts - Non Compliant
- Signals - Compliant
- Signals - Non Compliant
- Transit Stops - Compliant
- Transit Stops - Non Compliant
- Railroad Crossings - Compliant
- Railroad Crossings - Non Compliant
- Accessible Parking - Compliant
- Accessible Parking - Non Compliant
- Curb Ramps - Adjacent
- Island Curb Cuts - Adjacent
- Signals - Adjacent
- Transit Stops - Adjacent
- Railroad Crossings - Adjacent
- Accessible Parking - Adjacent

- Heavings < 1" (Excluded)***
- Heavings ≥ 1" (Excluded)***
- Uneven Heaving (Excluded)***
- Heaving Clusters (Excluded)
- Sidewalk Joint Gap (Excluded)***
- Miscellaneous Obstruction
- Missing Sidewalk Obstruction
- Other Obstruction
- Pole Post Hydrant Obstruction
- Ponding Obstruction
- Sidewalk Joint Obstruction
- Sign Obstruction
- Storm Grate Obstruction
- Transit Obstruction
- Traffic Obstruction
- Tree Obstruction
- Utility Obstruction
- Vegetation Obstruction - Low
- Vegetation Obstruction - Overhead
- Sidewalk Collection Path
- Adjacent Sidewalk Collection Path
- Buried Sidewalk
- Sidewalk Not Surveyed
- Missing Sidewalk Gap
- No Sidewalk on Block
- Heavings < 1"
- Heavings ≥ 1"
- Uneven Heaving
- Heaving Clusters
- Sidewalk Joint Gap
- Commercial Entrance
- Residential Entrance
- Commercial Entrance (within slope violation)
- Residential Entrance (within slope violation)
- Cross Slope**
- 2 - 3%
- 3.01 - 4%
- 4.01 - 5%
- 5.01% - 6%
- 6.01 - 7%
- 7.01 - 8%
- 8.01 - 9%
- 9.01 - 10%
- 10.01 - 12%
- > 12%
- Running Slope**
- 5 - 8.33%
- 8.34% - 10%
- 10.01 - 12.5%
- > 12.5%

*Note: ADA pedestrian issues have been identified and quantified in the ADA Survey Summary. There are instances where multiple issues can be resolved with a single corrective measure. The ADA Compliance Cost Estimate reflects the best estimation of quantities and cost to resolve all identified ADA issues.
 **Note: Additional investigation may be warranted when sidewalk running slope issues exist within the right-of-way.
 ***Note: Excluded items are violations that occur in areas with slope violations and have been excluded from the cost estimate.