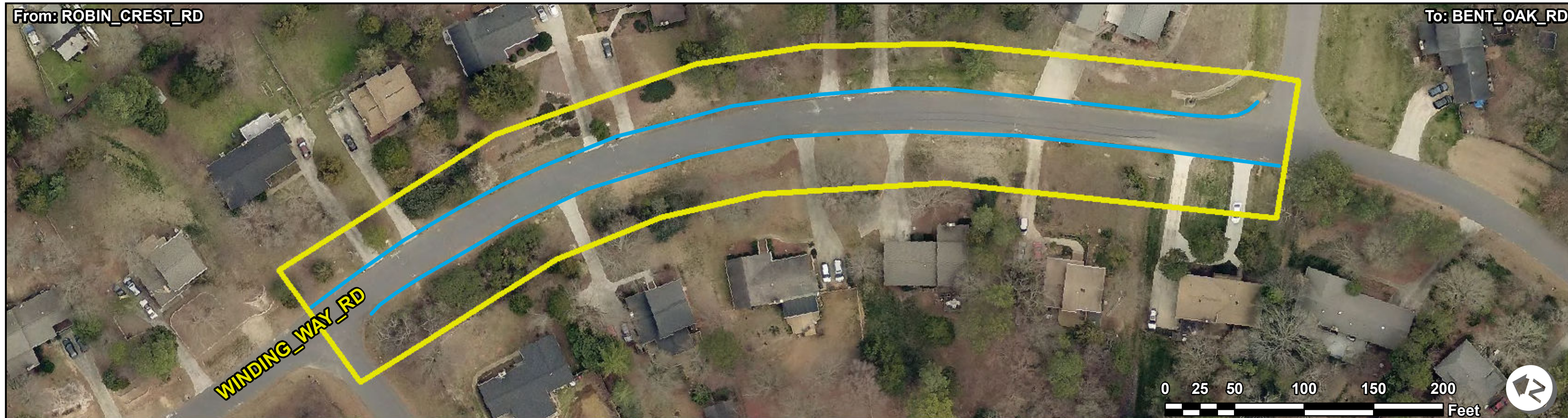


From: ROBIN\_CREST\_RD

To: BENT\_OAK\_RD



### ADA Survey Summary

Item Description	Quantity
1 Heavings less than 1"	0 EA
2 Heavings 1" or greater	0 EA
3 Uneven Heavings	0 EA
4 Heaving Clusters	0 SY
5 Sidewalk Joint Gaps	0 EA
6 Miscellaneous Obstruction	0 EA
7 Missing Sidewalk Obstruction	0 EA
8 Other Obstruction	0 EA
9 Pole Post Hydrant Obstruction	0 EA
10 Ponding Obstruction	0 EA
11 Sidewalk Joint Obstruction	0 EA
12 Sign Obstruction	0 EA
13 Storm Grate Obstruction	0 EA
14 Transit Obstruction	0 EA
15 Traffic Obstruction	0 EA
16 Tree Obstruction	0 EA
17 Utility Obstruction	0 EA
18 Vegetation Obstruction - Low	0 EA
19 Vegetation Obstruction - Overhead	0 EA
20 Commercial Entrance	0 EA
21 Residential Entrance	0 EA
22 Total Sidewalk Length Assessed	0 LF
23 Average Sidewalk Width	0 IN
24 No Sidewalk on Block (Approx.)	1404.946 LF
25 Missing Sidewalk Gaps (Approx.)	0 LF
26 Poor Surface Condition (Approx.)	0 LF
27 Buried Sidewalk (Approx.)	0 LF

### ADA Compliance Cost Estimate \*

Item Description	Quantity	Unit Price	Item Cost
1 Heavings less than 1"	0 EA	\$ 100.00	\$ 0.00
2 Heavings 1" or greater	0 EA	\$ 400.00	\$ 0.00
3 Uneven Heavings	0 EA	\$ 400.00	\$ 0.00
4 Heaving Clusters	0 SY	\$ 75.00	\$ 0.00
5 Sidewalk Joint Gaps	0 EA	\$ 200.00	\$ 0.00
6 Miscellaneous Obstruction	0 EA	\$ 1500.00	\$ 0.00
7 Missing Sidewalk Obstruction	0 EA	\$ 200.00	\$ 0.00
8 Other Obstruction	0 EA	\$ 500.00	\$ 0.00
9 Pole Post Hydrant Obstruction	0 EA	\$ 5000.00	\$ 0.00
10 Ponding Obstruction	0 EA	\$ 400.00	\$ 0.00
11 Sidewalk Joint Obstruction	0 EA	\$ 100.00	\$ 0.00
12 Sign Obstruction	0 EA	\$ 150.00	\$ 0.00
13 Storm Grate Obstruction	0 EA	\$ 700.00	\$ 0.00
14 Transit Obstruction	0 EA	\$ 500.00	\$ 0.00
15 Traffic Obstruction	0 EA	\$ 2000.00	\$ 0.00
16 Tree Obstruction	0 EA	\$ 500.00	\$ 0.00
17 Utility Obstruction	0 EA	\$ 1500.00	\$ 0.00
18 Vegetation Obstruction - Low	0 EA	\$ 150.00	\$ 0.00
19 Vegetation Obstruction - Overhead	0 EA	\$ 150.00	\$ 0.00
20 Commercial Entrance (within slope violation)	0 EA	\$ 5000.00	\$ 0.00
21 Residential Entrance (within slope violation)	0 EA	\$ 3000.00	\$ 0.00
22 Running Slope Violations**	0 SY	\$ 75.00	\$ 0.00
23 Cross Slope Violations	0 SY	\$ 75.00	\$ 0.00
24 Running and Cross Slope Violations	0 SY	\$ 75.00	\$ 0.00
25 Missing Sidewalk Gaps (Approx.)	0 LF	\$ 41.67	\$ 0.00
26 Poor Surface Condition (Approx.)	0 LF	\$ 41.67	\$ 0.00
27 Buried Sidewalk (Approx.)	0 LF	\$ 41.67	\$ 0.00
Sidewalk SubTotal:			\$ 0.00

### Intersection Inventory & Compliance Cost Estimate

Item Description	Total Count	Non Compliant Count	Cost
Curb Ramps	0	0	\$ 0.00
Island Curb Cuts	0	0	\$ 0.00
Signal Push Buttons	0	0	\$ 0.00
Transit Stops	0	0	\$ 0.00
Railroad Crossings	0	0	\$ 0.00
Accessible Parking Spaces	0	0	\$ 0.00
Intersection SubTotal:			\$ 0.00

### Corridor Total:

**\$ 0.00**

Curb Ramps - Compliant	Curb Ramps - Adjacent
Curb Ramps - Non Compliant	Island Curb Cuts - Adjacent
Island Curb Cuts - Compliant	Signals - Adjacent
Island Curb Cuts - Non Compliant	Transit Stops - Adjacent
Signals - Compliant	Railroad Crossings - Adjacent
Signals - Non Compliant	Accessible Parking - Adjacent
Transit Stops - Compliant	
Transit Stops - Non Compliant	
Railroad Crossings - Compliant	
Railroad Crossings - Non Compliant	
Accessible Parking - Compliant	
Accessible Parking - Non Compliant	

Heavings < 1" (Excluded)***	Heavings < 1"
Heavings ≥ 1" (Excluded)***	Heavings ≥ 1"
Uneven Heaving (Excluded)***	Uneven Heaving
Heaving Clusters (Excluded)	Heaving Clusters
Sidewalk Joint Gap (Excluded)***	Sidewalk Joint Gap
Miscellaneous Obstruction	Commercial Entrance
Missing Sidewalk Obstruction	Residential Entrance
Other Obstruction	Commercial Entrance (within slope violation)
Pole Post Hydrant Obstruction	Residential Entrance (within slope violation)
Ponding Obstruction	
Sidewalk Joint Obstruction	<b>Cross Slope</b>
Sign Obstruction	2 - 3%
Storm Grate Obstruction	7.01 - 8%
Transit Obstruction	3.01 - 4%
Traffic Obstruction	8.01 - 9%
Tree Obstruction	4.01 - 5%
Utility Obstruction	9.01 - 10%
Vegetation Obstruction - Low	5.01% - 6%
Vegetation Obstruction - Overhead	10.01 - 12%
Sidewalk Collection Path	6.01 - 7%
Adjacent Sidewalk Collection Path	> 12%
Buried Sidewalk	<b>Running Slope</b>
Sidewalk Not Surveyed	5 - 8.33%
Missing Sidewalk Gap	8.34% - 10%
No Sidewalk on Block	10.01 - 12.5%
	> 12.5%

\*Note: ADA pedestrian issues have been identified and quantified in the ADA Survey Summary. There are instances where multiple issues can be resolved with a single corrective measure. The ADA Compliance Cost Estimate reflects the best estimation of quantities and cost to resolve all identified ADA issues.  
 \*\*Note: Additional investigation may be warranted when sidewalk running slope issues exist within the right-of-way.  
 \*\*\*Note: Excluded items are violations that occur in areas with slope violations and have been excluded from the cost estimate.