

Access Compliance Report

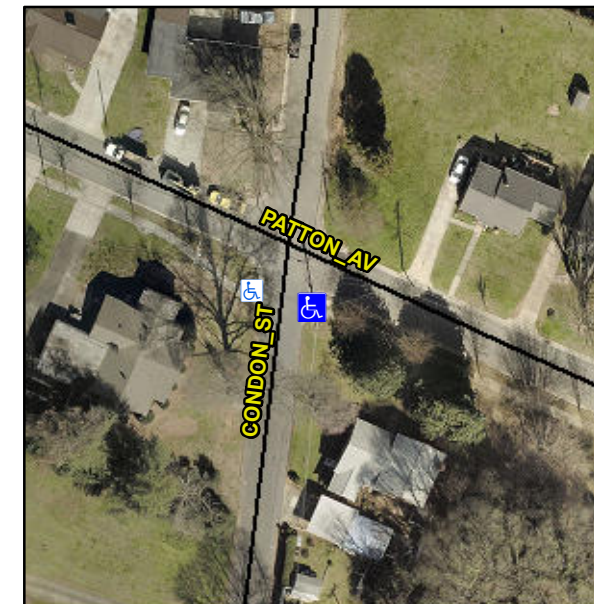
Public Rights-of-Way

(Curb Ramps)

Intersection ID: 9641	Main Street: CONDON_ST	Cross Street: PATTON_AV	Location: SE
ADA ID: 19CEFE36247E	Ramp Type: Directional1	Initial Pass/Fail: Pass	Overall Compliance: No
		Severity Score: 2.5	

Codes/Mitigation Info/Possible Solution

Field Measurements/Component Compliance



Possible Solutions:

Remove & Replace Entire Ramp.

Surveyor Notes:

N/A

PROW/ADA:

Not Found, R305.1.4, R305.2

Compliance	Description	Data	Compliance	Description	Data
N/A	Ramp Length (in)	65.0	Yes	Grade Break?	Yes
Yes	Ramp Width (in)	59.5	Yes	Grade Break Slope (%)	3.7
Yes	Ramp Slope (%)	2.9	Yes	Grade Break XSlope (%)	1.3
Yes	Ramp XSlope (%)	0.8			
Yes	Flare Type LT	N/A	Yes	Flare Type RT	N/A
N/A	Flare Slope LT (%)	N/A	N/A	Flare Slope RT (%)	N/A
N/A	Flare Traversable LT?	No	N/A	Flare Traversable RT?	No
Yes	Landing Length (in)	55.0	Yes	DWS Provided?	Yes
Yes	Landing Width (in)	61.0	Yes	DWS Contrast?	Yes
Yes	Landing Slope (%)	1.1	Yes	DWS Length (in)	24.0
Yes	Landing X Slope (%)	1.9	No	DWS Full Width?	No
N/A	Landing Curb? (Y/N)	No	Yes	DWS Offset LT (in)	25.0
N/A	Shared Landing?	No	No	DWS Offset RT (in)	19.0
Yes	Gutter Ponding?	No	Yes	Gutter Slope (%)	1.3
Yes	Gutter Lip Ht (in)	0.0	Yes	Gutter X Slope (%)	1.4
N/A	Painted X Walk1?	No		Road Slope (%)	4.9
	X Walk 1 Direction	To NW		Road X Slope (%)	1.0
	X Walk 1 Width (in)	N/A		Clear Space?	Yes
	X Walk 1 Slope (%)	4.9	N/A	Clear Space to XWalk (in)	N/A
	X Walk 1 X Slope (%)	1.0	Yes	Storm Grate/Utility Hazard?	No
N/A	Ramp inside XWalk1?	N/A		Storm Grate/Utility Type	
Yes	Any Obstructions?	No			N/A
	Obstruction Type		Yes	Surface Condition? (G/P)	Good
			N/A	Curb Slope (%)	21.1

Total Cost: \$ 1600.00

