

# Access Compliance Report

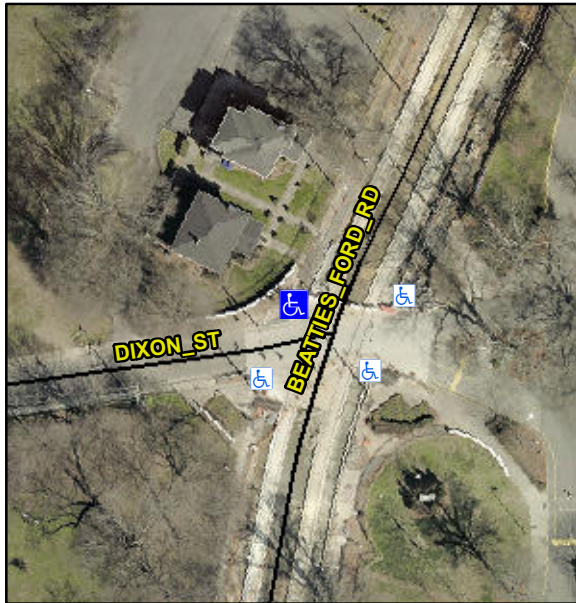
## Public Rights-of-Way

### (Curb Ramps)

|                        |                               |                         |                        |
|------------------------|-------------------------------|-------------------------|------------------------|
| Intersection ID: 10292 | Main Street: BEATTIES_FORD_RD | Cross Street: DIXON_ST  | Location: NW           |
| ADA ID: 507866921F29   | Ramp Type: PerpDiag           | Initial Pass/Fail: Fail | Overall Compliance: No |
|                        |                               | Severity Score: 40      |                        |

#### Codes/Mitigation Info/Possible Solution

#### Field Measurements/Component Compliance



Possible Solutions:

**Remove & Replace Curb Ramp With Two New Directional Ramps or Equivalent.**

Surveyor Notes:

**N/A**

PROW/ADA:

**Not Found, R304.2.2, R302.7**

|                         |                  |
|-------------------------|------------------|
| Street 1 Name           | DIXON ST         |
| Stop Condition-Street 2 | Signal           |
| Street 2 Name           | BEATTIES FORD RD |
| Stop Condition-Street 1 | Signal           |

Total Cost: \$ 3200.00

| Compliance | Description           | Data  | Compliance | Description                 | Data |
|------------|-----------------------|-------|------------|-----------------------------|------|
| N/A        | Ramp Length (in)      | 68.0  | No         | Ramp Slope (%)              | 15.1 |
| Yes        | Ramp Width (in)       | 109.0 | Yes        | Ramp XSlope (%)             | 0.6  |
| N/A        | Flare Type LT         | N/A   | N/A        | Flare Type RT               | N/A  |
| N/A        | Flare Slope LT (%)    | N/A   | N/A        | Flare Slope RT (%)          | N/A  |
| N/A        | Flare Traversable LT? | N/A   | N/A        | Flare Traversable RT?       | N/A  |
| N/A        | Landing Length (in)   | N/A   | N/A        | DWS Provided?               | N/A  |
| N/A        | Landing Width (in)    | N/A   | N/A        | DWS Contrast?               | N/A  |
| N/A        | Landing Slope (%)     | N/A   | N/A        | DWS Length (in)             | N/A  |
| N/A        | Landing X Slope (%)   | N/A   | N/A        | DWS Full Width?             | N/A  |
| N/A        | Landing Curb? (Y/N)   | N/A   | N/A        | DWS Offset (in)             | N/A  |
| N/A        | Shared Landing?       | N/A   |            |                             |      |
| N/A        | Gutter Ponding?       | N/A   | N/A        | Gutter Slope (%)            | N/A  |
| N/A        | Gutter Lip Ht (in)    | N/A   | N/A        | Gutter X Slope (%)          | N/A  |
| N/A        | Painted X Walk1?      | Yes   | N/A        | Painted X Walk2?            | No   |
|            | X Walk 1 Direction    | To SW |            | X Walk 2 Direction          | To E |
| N/A        | X Walk 1 Width (in)   | 101.0 | N/A        | X Walk 2 Width (in)         | N/A  |
|            | X Walk 1 Slope (%)    | 2.3   |            | X Walk 2 Slope (%)          | 7.0  |
|            | X Walk 1 X Slope (%)  | 2.9   |            | X Walk 2 X Slope (%)        | 0.3  |
| N/A        | Ramp inside XWalk1?   | Yes   | N/A        | Ramp inside XWalk2?         | N/A  |
|            | Road Slope (%)        | 1.8   | N/A        | Clear Space?                | N/A  |
|            | Road X Slope (%)      | 9.8   | N/A        | Clear Space to XWalk (in)   | N/A  |
| N/A        | Any Obstructions?     | N/A   | N/A        | Storm Grate/Utility Hazard? | N/A  |
|            | Obstruction Type      |       |            | Storm Grate/Utility Type    |      |
|            |                       | N/A   |            |                             | N/A  |
|            |                       | No    |            | Surface Condition? (G/P)    | Poor |

