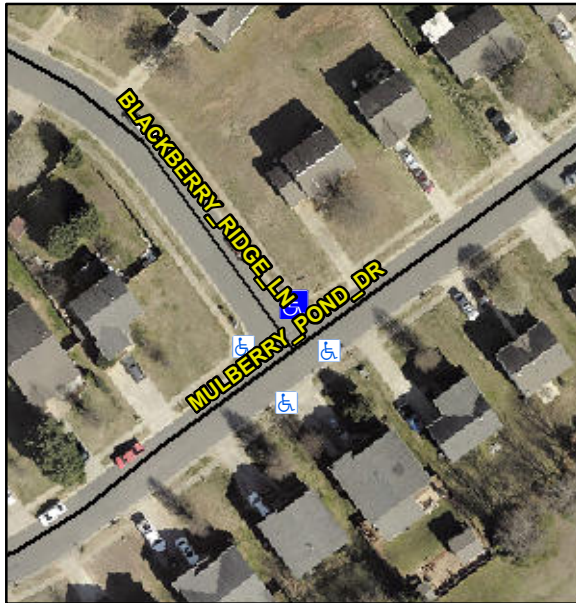


Access Compliance Report

Public Rights-of-Way

(Curb Ramps)

Intersection ID: 43514	Main Street: BLACKBERRY RIDGE LN	Cross Street: MULBERRY POND DR	Location: NE
ADA ID: 5396E7798103	Ramp Type: PerpDiag	Initial Pass/Fail: Pass	Overall Compliance: No
Codes/Mitigation Info/Possible Solution		Field Measurements/Component Compliance	
Severity Score: 2.75			



Possible Solutions:

Remove & Replace Curb Ramp With Two New Directional Ramps or Equivalent. Remove & Replace Gutter.

Surveyor Notes:

N/A

PROW/ADA:

Not Found, R304.5.3, R304.2.2-Perp, R304.3.2-Para, R305.1.4, R305.2

Compliance	Description	Data	Compliance	Description	Data
N/A	Ramp Length (in)	45.0	Yes	Ramp Slope (%)	5.3
Yes	Ramp Width (in)	50.0	No	Ramp XSlope (%)	3.7
N/A	Flare Type LT	Sloped	N/A	Flare Type RT	N/A
N/A	Flare Slope LT (%)	5.9	N/A	Flare Slope RT (%)	7.0
N/A	Flare Traversable LT?	No	N/A	Flare Traversable RT?	No
Yes	Landing Length (in)	51.0	Yes	DWS Provided?	Yes
Yes	Landing Width (in)	59.0	Yes	DWS Contrast?	Yes
No	Landing Slope (%)	3.2	Yes	DWS Length (in)	24.5
No	Landing X Slope (%)	5.4	No	DWS Full Width?	No
N/A	Landing Curb? (Y/N)	No	No	DWS Offset (in)	4.0
N/A	Shared Landing?	No			
Yes	Gutter Ponding?	No	Yes	Gutter Slope (%)	2.0
Yes	Gutter Lip Ht (in)	0.0	No	Gutter X Slope (%)	4.9
N/A	Painted X Walk1?	No	N/A	Painted X Walk2?	No
	X Walk 1 Direction	To SW		X Walk 2 Direction	To SE
N/A	X Walk 1 Width (in)	N/A	N/A	X Walk 2 Width (in)	N/A
	X Walk 1 Slope (%)	0.9		X Walk 2 Slope (%)	5.6
	X Walk 1 X Slope (%)	2.4		X Walk 2 X Slope (%)	0.4
N/A	Ramp inside XWalk1?	N/A	N/A	Ramp inside XWalk2?	N/A
	Road Slope (%)	3.8	N/A	Clear Space?	Yes
	Road X Slope (%)	2.7	N/A	Clear Space to XWalk (in)	N/A
Yes	Any Obstructions?	No	Yes	Storm Grate/Utility Hazard?	No
	Obstruction Type			Storm Grate/Utility Type	
		N/A			N/A
			Yes	Surface Condition? (G/P)	Good

Total Cost: \$ 3950.00

