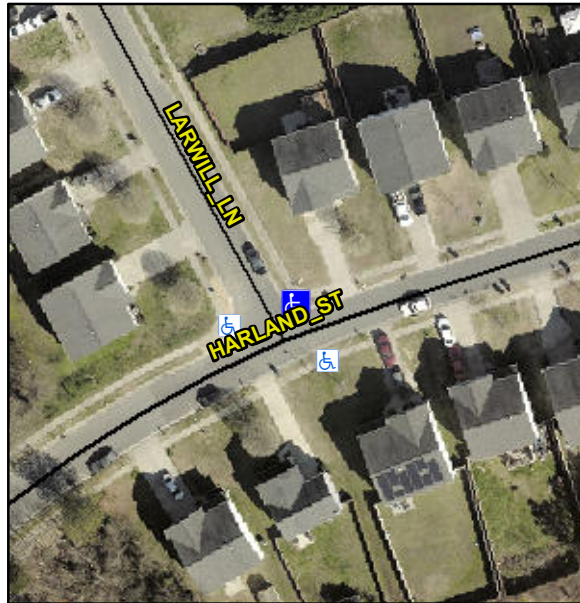


Intersection ID: 30106	Main Street: HARLAND_ST	Cross Street: LARWILL_LN	Location:	NE
ADA ID: 587DDC691510	Ramp Type: PerpDiag	Initial Pass/Fail: Fail	Overall Compliance: No	Severity Score: 21.25

Codes/Mitigation Info/Possible Solution	Field Measurements/Component Compliance
---	---



### Possible Solutions:

**Remove & Replace Curb Ramp With Two New Directional Ramps or Equivalent.**

Surveyor Notes:

**N/A**

PROW/ADA:

**Not Found, R304.5.1, R304.5.3**

Compliance	Description	Data	Compliance	Description	Data
N/A	Ramp Length (in)	47.0	Yes	Ramp Slope (%)	5.3
No	Ramp Width (in)	38.0	No	Ramp XSlope (%)	6.9
N/A	Flare Type LT	N/A	N/A	Flare Type RT	N/A
N/A	Flare Slope LT (%)	N/A	N/A	Flare Slope RT (%)	N/A
N/A	Flare Traversable LT?	N/A	N/A	Flare Traversable RT?	N/A
N/A	Landing Length (in)	N/A	N/A	DWS Provided?	N/A
N/A	Landing Width (in)	N/A	N/A	DWS Contrast?	N/A
N/A	Landing Slope (%)	N/A	N/A	DWS Length (in)	N/A
N/A	Landing X Slope (%)	N/A	N/A	DWS Full Width?	N/A
N/A	Landing Curb? (Y/N)	N/A	N/A	DWS Offset (in)	N/A
N/A	Shared Landing?	N/A			
N/A	Gutter Ponding?	N/A	N/A	Gutter Slope (%)	N/A
N/A	Gutter Lip Ht (in)	N/A	N/A	Gutter X Slope (%)	N/A
N/A	Painted X Walk1?	No	N/A	Painted X Walk2?	No
	X Walk 1 Direction	To W		X Walk 2 Direction	To S
N/A	X Walk 1 Width (in)	N/A	N/A	X Walk 2 Width (in)	N/A
	X Walk 1 Slope (%)	3.9		X Walk 2 Slope (%)	0.9
	X Walk 1 X Slope (%)	2.5		X Walk 2 X Slope (%)	4.5
N/A	Ramp inside XWalk1?	N/A	N/A	Ramp inside XWalk2?	N/A
	Road Slope (%)	5.7	N/A	Clear Space?	N/A
	Road X Slope (%)	2.3	N/A	Clear Space to XWalk (in)	N/A
N/A	Any Obstructions?	N/A	N/A	Storm Grate/Utility Hazard?	N/A
	Obstruction Type			Storm Grate/Utility Type	
		N/A			N/A
			Yes	Surface Condition? (G/P)	Good

Total Cost: \$ 3200.00

Street 1 Name	LARWILL LN
Stop Condition-Street 2	StopSign
Street 2 Name	HARLAND ST
Stop Condition-Street 1	None

