

Access Compliance Report

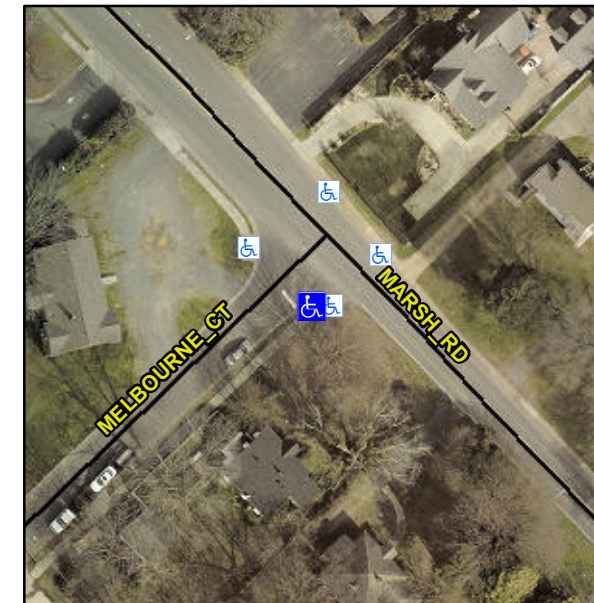
Public Rights-of-Way

(Curb Ramps)

Intersection ID: 15512	Main Street: MARSH_RD	Cross Street: MELBOURNE_CT	Location: S
ADA ID: 62D11FF7E3EE	Ramp Type: Combination2	Initial Pass/Fail: Fail	Overall Compliance: No
			Severity Score: 18.75

Codes/Mitigation Info/Possible Solution

Field Measurements/Component Compliance



Possible Solutions:

Remove & Replace Entire Ramp.

Surveyor Notes:

N/A

PROW/ADA:

Not Found, R304.5.1, R304.5.3

Total Cost:

\$ 1600.00

Compliance	Description	Data	Compliance	Description	Data
N/A	Ramp Length LT (in)	50.0	N/A	Ramp Length RT (in)	N/A
No	Ramp Width LT (in)	34.0	N/A	Ramp Width RT (in)	N/A
Yes	Ramp Slope LT (%)	5.4	N/A	Ramp Slope RT (%)	N/A
No	Ramp XSlope LT (%)	3.6	N/A	Ramp XSlope RT (%)	N/A
N/A	Ramp Length (in)	25.0	Yes	Ramp Slope (%)	5.6
Yes	Ramp Width (in)	48.0	No	Ramp XSlope (%)	3.6
N/A	Flare Type LT	N/A	N/A	Flare Type RT	N/A
N/A	Flare Slope LT (%)	N/A	N/A	Flare Slope RT (%)	N/A
N/A	Flare Traversable LT?	N/A	N/A	Flare Traversable RT?	N/A
N/A	Landing Length (in)	N/A	N/A	DWS Provided?	N/A
N/A	Landing Width (in)	N/A	N/A	DWS Contrast?	N/A
N/A	Landing Slope (%)	N/A	N/A	DWS Length (in)	N/A
N/A	Landing X Slope (%)	N/A	N/A	DWS Full Width?	N/A
N/A	Landing Curb? (Y/N)	N/A	N/A	DWS Offset (in)	N/A
N/A	Shared Landing?	N/A			
N/A	Gutter Ponding?	N/A	N/A	Gutter Slope (%)	N/A
N/A	Gutter Lip Ht (in)	N/A	N/A	Gutter X Slope (%)	N/A
N/A	Painted X Walk1?	No	N/A	Painted X Walk2?	N/A
	X Walk 1 Direction	To NW		X Walk 2 Direction	N/A
	X Walk 1 Width (in)	N/A		X Walk 2 Width (in)	N/A
	X Walk 1 Slope (%)	2.4		X Walk 2 Slope (%)	N/A
	X Walk 1 X Slope (%)	4.4		X Walk 2 X Slope (%)	N/A
N/A	Ramp inside XWalk1?	N/A	N/A	Ramp inside XWalk2?	N/A
	Road Slope (%)	N/A		Clear Space?	N/A
	Road X Slope (%)	N/A	N/A	Clear Space to XWalk (in)	N/A
			N/A	Any Obstruction?	N/A
				Obstruction Type	N/A
			N/A	Storm Grate/Utility Hazard?	N/A
				Storm Grate/Utility Type	N/A
					N/A
Yes	Surface Condition? (G/P)	Good			
	Curb Slope (%)	18.9			

Street 1 Name	StopSign
Stop Condition-Street 1	MELBOURNE CT
Street 2 Name	N/A
Stop Condition-Street 2	N/A

