

Access Compliance Report

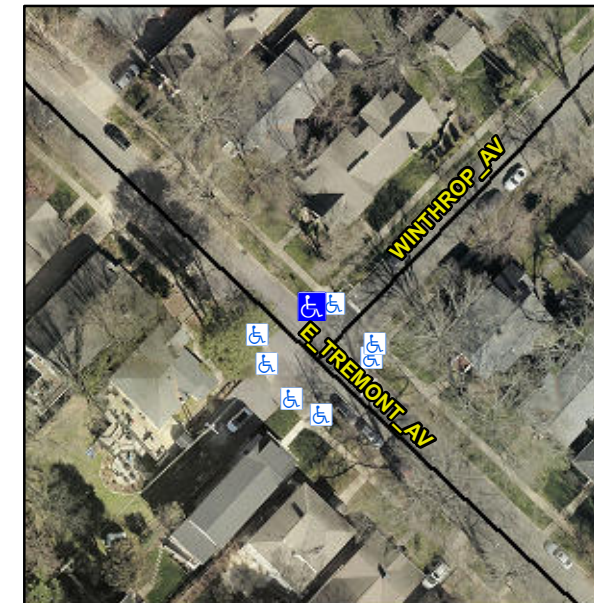
Public Rights-of-Way

(Curb Ramps)

Intersection ID: 14661	Main Street: E_TREMONT_AV	Cross Street: WINTHROP_AV	Location: N
ADA ID: 6CBB67025813	Ramp Type: Directional1	Initial Pass/Fail: Fail	Overall Compliance: No
			Severity Score: 13.75

Codes/Mitigation Info/Possible Solution

Field Measurements/Component Compliance



Possible Solutions:

Remove & Replace Entire Ramp.

Surveyor Notes:

N/A

PROW/ADA:

R304.2.2, R304.5.3

Compliance	Description	Data	Compliance	Description	Data
N/A	Ramp Length (in)	72.0	N/A	Grade Break?	N/A
Yes	Ramp Width (in)	48.0	N/A	Grade Break Slope (%)	0.0
No	Ramp Slope (%)	9.6	N/A	Grade Break XSlope (%)	0.0
No	Ramp XSlope (%)	2.1			
N/A	Flare Type LT	N/A	N/A	Flare Type RT	N/A
N/A	Flare Slope LT (%)	N/A	N/A	Flare Slope RT (%)	0.0
N/A	Flare Traversable LT?	N/A	N/A	Flare Traversable RT?	N/A
N/A	Landing Length (in)	0.0	N/A	DWS Provided?	N/A
N/A	Landing Width (in)	0.0	N/A	DWS Contrast?	N/A
N/A	Landing Slope (%)	0.0	N/A	DWS Length (in)	N/A
N/A	Landing X Slope (%)	0.0	N/A	DWS Full Width?	N/A
N/A	Landing Curb? (Y/N)	N/A	N/A	DWS Offset LT (in)	N/A
N/A	Shared Landing?	N/A	N/A	DWS Offset RT (in)	N/A
N/A	Gutter Ponding?	0.0	N/A	Gutter Slope (%)	N/A
N/A	Gutter Lip Ht (in)	1.0	N/A	Gutter X Slope (%)	N/A
N/A	Painted X Walk1?	No		Road Slope (%)	5.5
	X Walk 1 Direction	To SW		Road X Slope (%)	3.8
	X Walk 1 Width (in)	N/A		Clear Space?	N/A
	X Walk 1 Slope (%)	5.5	N/A	Clear Space to XWalk (in)	N/A
	X Walk 1 X Slope (%)	3.8	N/A	Storm Grate/Utility Hazard?	N/A
N/A	Ramp inside XWalk1?	N/A		Storm Grate/Utility Type	
N/A	Any Obstructions?	N/A			N/A
	Obstruction Type		Yes	Surface Condition? (G/P)	Good
			N/A	Curb Slope (%)	0.9

Total Cost: \$ 1600.00

Street 1 Name	E TREMONT AV
Stop Condition-Street 1	StopSign
Street 2 Name	N/A
Stop Condition-Street 2	N/A

