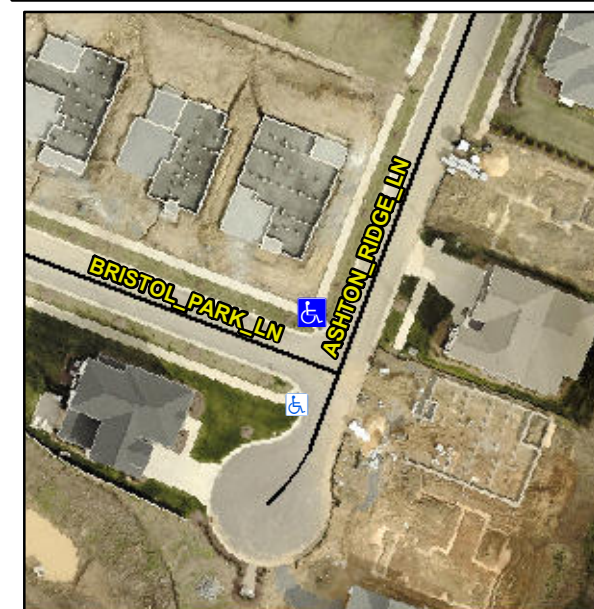


# Access Compliance Report

## Public Rights-of-Way

### (Curb Ramps)

Intersection ID: 54296	Main Street: BRISTOL_PARK_LN	Cross Street: ASHTON_RIDGE_LN	Location:	N
ADA ID: 878E2266ACD8	Ramp Type: PerpDiag	Initial Pass/Fail: Fail	Overall Compliance: No	Severity Score: 12.5
Codes/Mitigation Info/Possible Solution		Field Measurements/Component Compliance		



Possible Solutions:

**Remove & Replace Curb Ramp With Two New Directional Ramps or Equivalent.**

Surveyor Notes:

**N/A**

PROW/ADA:

**R304.5.3**

Total Cost:

**\$ 3200.00**

Compliance	Description	Data	Compliance	Description	Data
N/A	Ramp Length (in)	97.0	Yes	Ramp Slope (%)	5.6
Yes	Ramp Width (in)	60.0	No	Ramp XSlope (%)	6.2
N/A	Flare Type LT	N/A	N/A	Flare Type RT	N/A
N/A	Flare Slope LT (%)	N/A	N/A	Flare Slope RT (%)	N/A
N/A	Flare Traversable LT?	N/A	N/A	Flare Traversable RT?	N/A
N/A	Landing Length (in)	N/A	N/A	DWS Provided?	N/A
N/A	Landing Width (in)	N/A	N/A	DWS Contrast?	N/A
N/A	Landing Slope (%)	N/A	N/A	DWS Length (in)	N/A
N/A	Landing X Slope (%)	N/A	N/A	DWS Full Width?	N/A
N/A	Landing Curb? (Y/N)	N/A	N/A	DWS Offset (in)	N/A
N/A	Shared Landing?	N/A			
N/A	Gutter Ponding?	N/A	N/A	Gutter Slope (%)	N/A
N/A	Gutter Lip Ht (in)	N/A	N/A	Gutter X Slope (%)	N/A
N/A	Painted X Walk1?	No	N/A	Painted X Walk2?	No
	X Walk 1 Direction	To SW		X Walk 2 Direction	To SE
N/A	X Walk 1 Width (in)	N/A	N/A	X Walk 2 Width (in)	N/A
	X Walk 1 Slope (%)	1.6		X Walk 2 Slope (%)	5.8
	X Walk 1 X Slope (%)	3.8		X Walk 2 X Slope (%)	0.1
N/A	Ramp inside XWalk1?	N/A	N/A	Ramp inside XWalk2?	N/A
	Road Slope (%)	2.7	N/A	Clear Space?	N/A
	Road X Slope (%)	1.3	N/A	Clear Space to XWalk (in)	N/A
N/A	Any Obstructions?	N/A	N/A	Storm Grate/Utility Hazard?	N/A
	Obstruction Type			Storm Grate/Utility Type	
		N/A			N/A
			Yes	Surface Condition? (G/P)	Good

Street 1 Name **BRISTOL PARK LN**  
 Stop Condition-Street 2 **StopSign**  
 Street 2 Name **ASHTON RIDGE LN**  
 Stop Condition-Street 1 **None**

