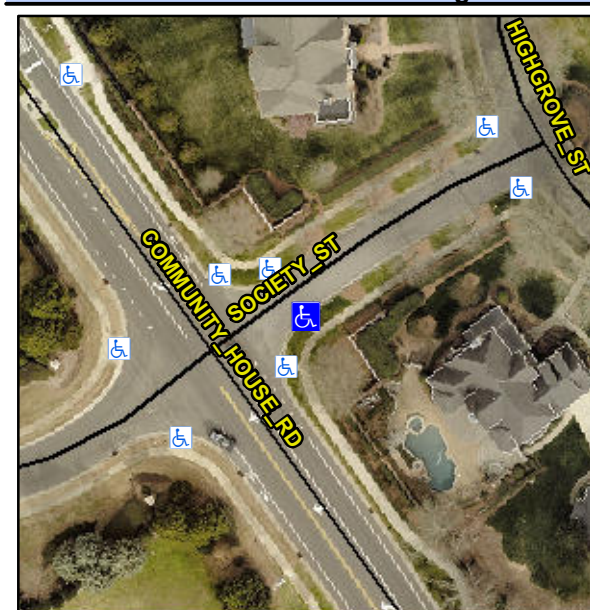


# Access Compliance Report

## Public Rights-of-Way

### (Curb Ramps)

Intersection ID: 28245	Main Street: SOCIETY_ST	Cross Street: COMMUNITY_HOUSE_RD	Location: E
ADA ID: 881A76EB2CB6	Ramp Type: Perp	Initial Pass/Fail: Fail	Overall Compliance: No
Severity Score: 12.5			
Codes/Mitigation Info/Possible Solution		Field Measurements/Component Compliance	



Possible Solutions:

**Remove & Replace Entire Ramp.**

Surveyor Notes:

**N/A**

PROW/ADA:

**R304.2.2**

Street 1 Name	<b>SOCIETY ST</b>
Stop Condition-Street 2	<b>StopSign</b>
Street 2 Name	<b>N/A</b>
Stop Condition-Street 1	<b>N/A</b>

Total Cost: \$ **1850.00**

Compliance	Description	Data	Compliance	Description	Data
N/A	Ramp Length (in)	<b>100.0</b>	No	Ramp Slope (%)	<b>11.4</b>
Yes	Ramp Width (in)	<b>54.0</b>	Yes	Ramp XSlope (%)	<b>1.9</b>
N/A	Flare Type LT	<b>N/A</b>	N/A	Flare Type RT	<b>N/A</b>
N/A	Flare Slope LT (%)	<b>N/A</b>	N/A	Flare Slope RT (%)	<b>N/A</b>
N/A	Flare Traversable LT?	<b>N/A</b>	N/A	Flare Traversable RT?	<b>N/A</b>
N/A	Landing Length (in)	<b>N/A</b>	N/A	DWS Provided?	<b>N/A</b>
N/A	Landing Width (in)	<b>N/A</b>	N/A	DWS Contrast?	<b>N/A</b>
N/A	Landing Slope (%)	<b>N/A</b>	N/A	DWS Length (in)	<b>N/A</b>
N/A	Landing X Slope (%)	<b>N/A</b>	N/A	DWS Full Width?	<b>N/A</b>
N/A	Landing Curb? (Y/N)	<b>N/A</b>	N/A	DWS Offset (in)	<b>N/A</b>
N/A	Shared Landing?	<b>N/A</b>			
N/A	Gutter Ponding?	<b>N/A</b>	N/A	Gutter Slope (%)	<b>N/A</b>
N/A	Gutter Lip Ht (in)	<b>N/A</b>	N/A	Gutter X Slope (%)	<b>N/A</b>
N/A	Painted X Walk1?	<b>No</b>	N/A	Painted X Walk2?	<b>N/A</b>
	X Walk 1 Direction	<b>To NW</b>		X Walk 2 Direction	<b>N/A</b>
N/A	X Walk 1 Width (in)	<b>N/A</b>	N/A	X Walk 2 Width (in)	<b>N/A</b>
	X Walk 1 Slope (%)	<b>1.9</b>		X Walk 2 Slope (%)	<b>N/A</b>
	X Walk 1 X Slope (%)	<b>2.5</b>		X Walk 2 X Slope (%)	<b>N/A</b>
N/A	Ramp inside XWalk1?	<b>N/A</b>	N/A	Ramp inside XWalk2?	<b>N/A</b>
	Road Slope (%)	<b>N/A</b>	N/A	Clear Space?	<b>N/A</b>
	Road X Slope (%)	<b>N/A</b>	N/A	Clear Space to XWalk (in)	<b>N/A</b>
N/A	Any Obstructions?	<b>N/A</b>	N/A	Storm Grate/Utility Hazard?	<b>N/A</b>
	Obstruction Type			Storm Grate/Utility Type	
		<b>N/A</b>			<b>N/A</b>
			Yes	Surface Condition? (G/P)	<b>Good</b>

