

Access Compliance Report

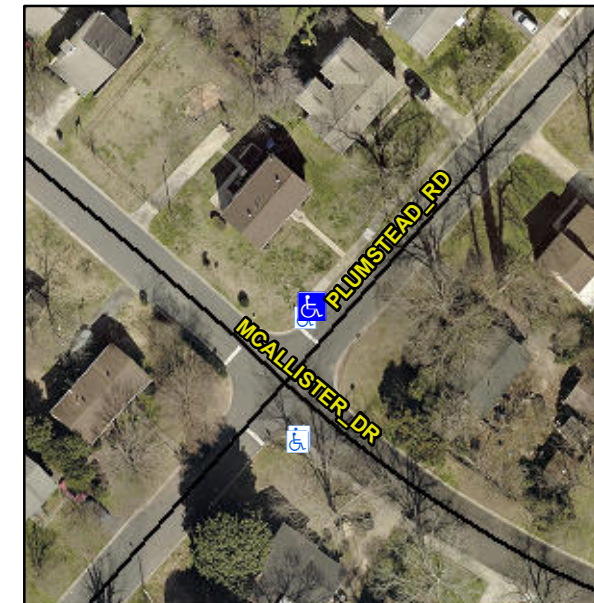
Public Rights-of-Way

(Curb Ramps)

| | | | | |
|-----------------------|---------------------------|-----------------------------|------------------------|--------------------|
| Intersection ID: 6956 | Main Street: PLUMSTEAD_RD | Cross Street: MCALLISTER_DR | Location: | N |
| ADA ID: 8B14BB257128 | Ramp Type: Combination1 | Initial Pass/Fail: Fail | Overall Compliance: No | Severity Score: 25 |

Codes/Mitigation Info/Possible Solution

Field Measurements/Component Compliance



Possible Solutions:

Remove & Replace Entire Ramp.

Surveyor Notes:

RP < 5%

PROW/ADA:

Not Found, R304.5.1, R304.5.3

| | |
|-------------------------|--------------|
| Street 1 Name | StopSign |
| Stop Condition-Street 1 | PLUMSTEAD RD |
| Street 2 Name | N/A |
| Stop Condition-Street 2 | N/A |

Total Cost: \$ 1800.00

| Compliance | Description | Data | Compliance | Description | Data |
|------------|-----------------------|------|------------|-----------------------------|------|
| N/A | Ramp Length LT (in) | N/A | N/A | Ramp Length RT (in) | 51.0 |
| N/A | Ramp Width LT (in) | N/A | Yes | Ramp Width RT (in) | 59.0 |
| N/A | Ramp Slope LT (%) | N/A | Yes | Ramp Slope RT (%) | 8.2 |
| N/A | Ramp XSlope LT (%) | N/A | Yes | Ramp XSlope RT (%) | 0.9 |
| N/A | Ramp Length (in) | 86.5 | Yes | Ramp Slope (%) | 3.8 |
| No | Ramp Width (in) | 34.0 | No | Ramp XSlope (%) | 14.7 |
| N/A | Flare Type LT | N/A | N/A | Flare Type RT | N/A |
| N/A | Flare Slope LT (%) | N/A | N/A | Flare Slope RT (%) | N/A |
| N/A | Flare Traversable LT? | N/A | N/A | Flare Traversable RT? | N/A |
| N/A | Landing Length (in) | N/A | N/A | DWS Provided? | N/A |
| N/A | Landing Width (in) | N/A | N/A | DWS Contrast? | N/A |
| N/A | Landing Slope (%) | N/A | N/A | DWS Length (in) | N/A |
| N/A | Landing X Slope (%) | N/A | N/A | DWS Full Width? | N/A |
| N/A | Landing Curb? (Y/N) | N/A | N/A | DWS Offset (in) | N/A |
| N/A | Shared Landing? | N/A | | | |
| N/A | Gutter Ponding? | N/A | N/A | Gutter Slope (%) | N/A |
| N/A | Gutter Lip Ht (in) | N/A | N/A | Gutter X Slope (%) | N/A |
| N/A | Painted X Walk1? | No | N/A | Painted X Walk2? | N/A |
| | X Walk 1 Direction | To S | | X Walk 2 Direction | N/A |
| | X Walk 1 Width (in) | N/A | | X Walk 2 Width (in) | N/A |
| | X Walk 1 Slope (%) | 9.0 | | X Walk 2 Slope (%) | N/A |
| | X Walk 1 X Slope (%) | 4.2 | | X Walk 2 X Slope (%) | N/A |
| N/A | Ramp inside XWalk1? | N/A | N/A | Ramp inside XWalk2? | N/A |
| | Road Slope (%) | N/A | | Clear Space? | N/A |
| | Road X Slope (%) | N/A | N/A | Clear Space to XWalk (in) | N/A |
| | | | N/A | Any Obstruction? | N/A |
| | | | | Obstruction Type | N/A |
| | | | N/A | Storm Grate/Utility Hazard? | N/A |
| | | | | Storm Grate/Utility Type | N/A |
| | | | Yes | Surface Condition? (G/P) | Good |
| | | | | Curb Slope (%) | 9.0 |

