

# Access Compliance Report

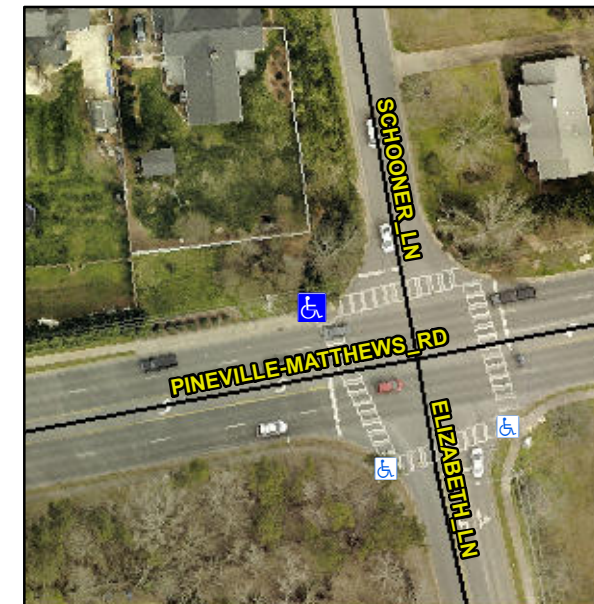
## Public Rights-of-Way

### (Curb Ramps)

Intersection ID: 23720	Main Street: ELIZABETH_LN	Cross Street: PINEVILLE-MATTHEWS_RD	Location: NW
ADA ID: 8F5B55CB132F	Ramp Type: Perpendicular Diagonal	Initial Pass/Fail: Fail	Overall Compliance: No
			Severity Score: 10

#### Codes/Mitigation Info/Possible Solution

#### Field Measurements/Component Compliance



Possible Solutions:

**Remove & Replace Curb Ramp With Two New Directional Ramps or Equivalent.**

Surveyor Notes:

**N/A**

PROW/ADA:

**Not Found, R304.5.1, R304.5.3**

Total Cost: \$ 3200.00

Compliance	Description	Data	Compliance	Description	Data
N/A	Ramp Length (in)	70.0	Yes	Ramp Slope (%)	5.5
No	Ramp Width (in)	47.5	No	Ramp XSlope (%)	2.1
N/A	Flare Type LT	N/A	N/A	Flare Type RT	N/A
N/A	Flare Slope LT (%)	N/A	N/A	Flare Slope RT (%)	N/A
N/A	Flare Traversable LT?	N/A	N/A	Flare Traversable RT?	N/A
N/A	Landing Length (in)	N/A	N/A	DWS Provided?	N/A
N/A	Landing Width (in)	N/A	N/A	DWS Contrast?	N/A
N/A	Landing Slope (%)	N/A	N/A	DWS Length (in)	N/A
N/A	Landing X Slope (%)	N/A	N/A	DWS Full Width?	N/A
N/A	Landing Curb? (Y/N)	N/A	N/A	DWS Offset (in)	N/A
N/A	Shared Landing?	N/A			
N/A	Gutter Ponding?	N/A	N/A	Gutter Slope (%)	N/A
N/A	Gutter Lip Ht (in)	N/A	N/A	Gutter X Slope (%)	N/A
N/A	Painted X Walk1?	Yes	N/A	Painted X Walk2?	Yes
	X Walk 1 Direction	To S		X Walk 2 Direction	To E
N/A	X Walk 1 Width (in)	101.0	N/A	X Walk 2 Width (in)	106.0
	X Walk 1 Slope (%)	1.1		X Walk 2 Slope (%)	0.2
	X Walk 1 X Slope (%)	2.0		X Walk 2 X Slope (%)	1.9
N/A	Ramp inside XWalk1?	Yes	N/A	Ramp inside XWalk2?	Yes
	Road Slope (%)	2.0	N/A	Clear Space?	N/A
	Road X Slope (%)	3.5	N/A	Clear Space to XWalk (in)	N/A
N/A	Any Obstructions?	N/A	N/A	Storm Grate/Utility Hazard?	N/A
	Obstruction Type			Storm Grate/Utility Type	
		N/A			N/A
			Yes	Surface Condition? (G/P)	Good

Street 1 Name PINEVILLE-MATTHEWS RD  
 Stop Condition-Street 2 Signal  
 Street 2 Name SCHOONER LN  
 Stop Condition-Street 1 Signal

