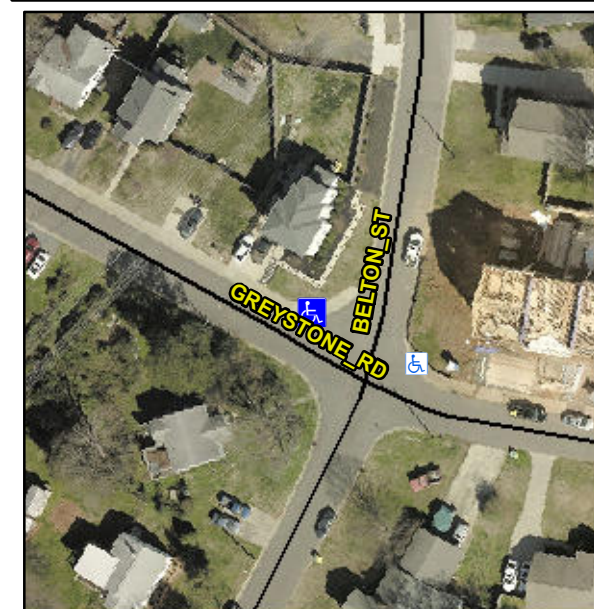


Access Compliance Report

Public Rights-of-Way

(Curb Ramps)

Intersection ID: 16012	Main Street: BELTON_ST	Cross Street: GREYSTONE_RD	Location: N
ADA ID: 989D6D89231D	Ramp Type: PerpDiag	Initial Pass/Fail: Pass	Overall Compliance: No
Severity Score: 10.25			
Codes/Mitigation Info/Possible Solution		Field Measurements/Component Compliance	



Possible Solutions:

Remove & Replace Curb Ramp With Two New Directional Ramps or Equivalent.

Surveyor Notes:

N/A

PROW/ADA:

Not Found, R304.5.3, R304.2.1, R304.2.2-Perp, R304.3.2-Para, R305.2

Total Cost: \$ 3200.00

Compliance	Description	Data	Compliance	Description	Data
N/A	Ramp Length (in)	61.0	Yes	Ramp Slope (%)	5.6
Yes	Ramp Width (in)	48.0	No	Ramp XSlope (%)	3.9
N/A	Flare Type LT	Sloped	N/A	Flare Type RT	N/A
N/A	Flare Slope LT (%)	5.6	Yes	Flare Slope RT (%)	9.2
N/A	Flare Traversable LT?	Yes	N/A	Flare Traversable RT?	Yes
No	Landing Length (in)	N/A	Yes	DWS Provided?	Yes
No	Landing Width (in)	N/A	Yes	DWS Contrast?	Yes
No	Landing Slope (%)	N/A	Yes	DWS Length (in)	24.5
No	Landing X Slope (%)	N/A	Yes	DWS Full Width?	Yes
N/A	Landing Curb? (Y/N)	No	No	DWS Offset (in)	4.0
N/A	Shared Landing?	N/A			
Yes	Gutter Ponding?	No	Yes	Gutter Slope (%)	2.9
Yes	Gutter Lip Ht (in)	0.0	Yes	Gutter X Slope (%)	1.7
N/A	Painted X Walk1?	No	N/A	Painted X Walk2?	No
	X Walk 1 Direction	To SW		X Walk 2 Direction	To SE
N/A	X Walk 1 Width (in)	N/A	N/A	X Walk 2 Width (in)	N/A
	X Walk 1 Slope (%)	0.5		X Walk 2 Slope (%)	2.8
	X Walk 1 X Slope (%)	2.5		X Walk 2 X Slope (%)	0.6
N/A	Ramp inside XWalk1?	N/A	N/A	Ramp inside XWalk2?	N/A
	Road Slope (%)	2.0	N/A	Clear Space?	Yes
	Road X Slope (%)	1.2	N/A	Clear Space to XWalk (in)	N/A
Yes	Any Obstructions?	No	Yes	Storm Grate/Utility Hazard?	No
	Obstruction Type			Storm Grate/Utility Type	
		N/A			N/A
			Yes	Surface Condition? (G/P)	Good

Street 1 Name GREYSTONE RD
 Stop Condition-Street 2 None
 Street 2 Name BELTON ST
 Stop Condition-Street 1 StopSign

