

Access Compliance Report

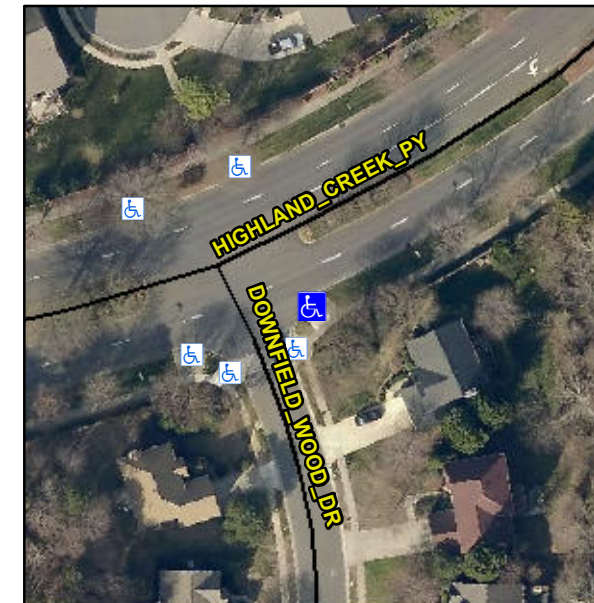
Public Rights-of-Way

(Curb Ramps)

Intersection ID: 2802	Main Street: DOWNFIELD_WOOD_DR	Cross Street: HIGHLAND_CREEK_PY	Location: SE
ADA ID: 9DE22B461AB6	Ramp Type: Perp	Initial Pass/Fail: Pass	Overall Compliance: No
		Severity Score: 7.75	

Codes/Mitigation Info/Possible Solution

Field Measurements/Component Compliance



Possible Solutions:

**Remove & Replace Entire Ramp.
Remove & Replace Gutter.**

Surveyor Notes:

N/A

PROW/ADA:

**R304.2.2-Perp, R304.3.2-Para,
R304.5.3, R305.1.4, R305.2, R304.5.4**

Total Cost: \$ 2600.00

Compliance	Description	Data	Compliance	Description	Data
N/A	Ramp Length (in)	141.0	Yes	Ramp Slope (%)	6.9
Yes	Ramp Width (in)	60.0	Yes	Ramp XSlope (%)	3.4
N/A	Flare Type LT	Sloped	N/A	Flare Type RT	N/A
N/A	Flare Slope LT (%)	1.2	Yes	Flare Slope RT (%)	8.5
N/A	Flare Traversable LT?	Yes	N/A	Flare Traversable RT?	Yes
Yes	Landing Length (in)	51.0	Yes	DWS Provided?	Yes
Yes	Landing Width (in)	55.5	Yes	DWS Contrast?	Yes
No	Landing Slope (%)	2.6	Yes	DWS Length (in)	24.0
No	Landing X Slope (%)	5.4	No	DWS Full Width?	No
N/A	Landing Curb? (Y/N)	No	No	DWS Offset (in)	3.5
N/A	Shared Landing?	Yes			
Yes	Gutter Ponding?	No	No	Gutter Slope (%)	7.7
Yes	Gutter Lip Ht (in)	0.0	Yes	Gutter X Slope (%)	2.8
N/A	Painted X Walk1?	No	N/A	Painted X Walk2?	N/A
	X Walk 1 Direction	To N		X Walk 2 Direction	N/A
N/A	X Walk 1 Width (in)	N/A	N/A	X Walk 2 Width (in)	N/A
	X Walk 1 Slope (%)	6.4		X Walk 2 Slope (%)	N/A
	X Walk 1 X Slope (%)	4.3		X Walk 2 X Slope (%)	N/A
N/A	Ramp inside XWalk1?	N/A	N/A	Ramp inside XWalk2?	N/A
	Road Slope (%)	N/A	N/A	Clear Space?	Yes
	Road X Slope (%)	N/A	N/A	Clear Space to XWalk (in)	N/A
Yes	Any Obstructions?	No	Yes	Storm Grate/Utility Hazard?	No
	Obstruction Type			Storm Grate/Utility Type	
		N/A			N/A
			Yes	Surface Condition? (G/P)	Good

Street 1 Name	HIGHLAND CREEK PY
Stop Condition-Street 2	None
Street 2 Name	N/A
Stop Condition-Street 1	N/A

