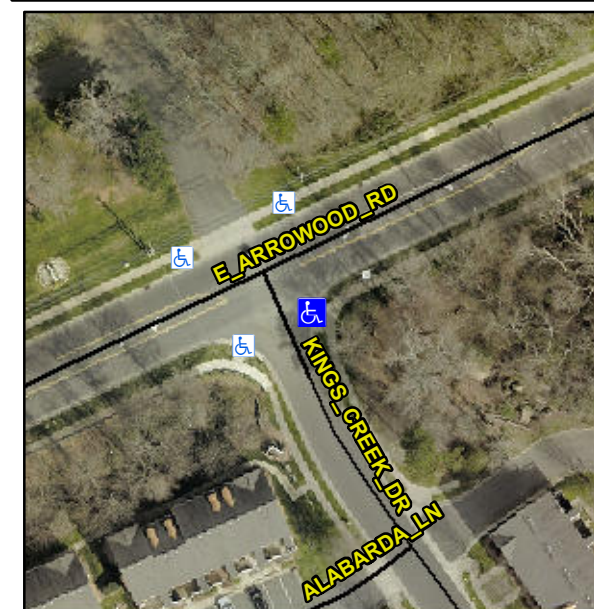


Access Compliance Report

Public Rights-of-Way

(Curb Ramps)

Intersection ID: 45699	Main Street: E_ARROWWOOD_RD	Cross Street: KINGS_CREEK_DR	Location: SE
ADA ID: A9786E282DFF	Ramp Type: PerpDiag	Initial Pass/Fail: Pass	Overall Compliance: No
Severity Score: 10			
Codes/Mitigation Info/Possible Solution		Field Measurements/Component Compliance	



Possible Solutions:

Remove & Replace Curb Ramp With Two New Directional Ramps or Equivalent.

Surveyor Notes:

N/A

PROW/ADA:

R304.2.1, R305

Total Cost: \$ 3200.00

Compliance	Description	Data	Compliance	Description	Data
N/A	Ramp Length (in)	59.0	Yes	Ramp Slope (%)	7.0
Yes	Ramp Width (in)	52.0	Yes	Ramp XSlope (%)	1.1
N/A	Flare Type LT	Sloped	N/A	Flare Type RT	N/A
N/A	Flare Slope LT (%)	5.2	Yes	Flare Slope RT (%)	5.1
N/A	Flare Traversable LT?	Yes	N/A	Flare Traversable RT?	Yes
Yes	Landing Length (in)	64.0	No	DWS Provided?	No
No	Landing Width (in)	44.0	N/A	DWS Contrast?	No
Yes	Landing Slope (%)	0.0	N/A	DWS Length (in)	N/A
Yes	Landing X Slope (%)	0.4	N/A	DWS Full Width?	No
N/A	Landing Curb? (Y/N)	No	N/A	DWS Offset (in)	N/A
N/A	Shared Landing?	No			
Yes	Gutter Ponding?	No	Yes	Gutter Slope (%)	1.5
Yes	Gutter Lip Ht (in)	0.0	Yes	Gutter X Slope (%)	0.8
N/A	Painted X Walk1?	No	N/A	Painted X Walk2?	No
	X Walk 1 Direction	To N		X Walk 2 Direction	To SW
N/A	X Walk 1 Width (in)	N/A	N/A	X Walk 2 Width (in)	N/A
	X Walk 1 Slope (%)	4.3		X Walk 2 Slope (%)	5.6
	X Walk 1 X Slope (%)	8.0		X Walk 2 X Slope (%)	4.5
N/A	Ramp inside XWalk1?	N/A	N/A	Ramp inside XWalk2?	N/A
	Road Slope (%)	0.7	N/A	Clear Space?	Yes
	Road X Slope (%)	8.9	N/A	Clear Space to XWalk (in)	N/A
Yes	Any Obstructions?	No	Yes	Storm Grate/Utility Hazard?	No
	Obstruction Type			Storm Grate/Utility Type	
		N/A			N/A
		Yes		Surface Condition? (G/P)	Good

