

Access Compliance Report

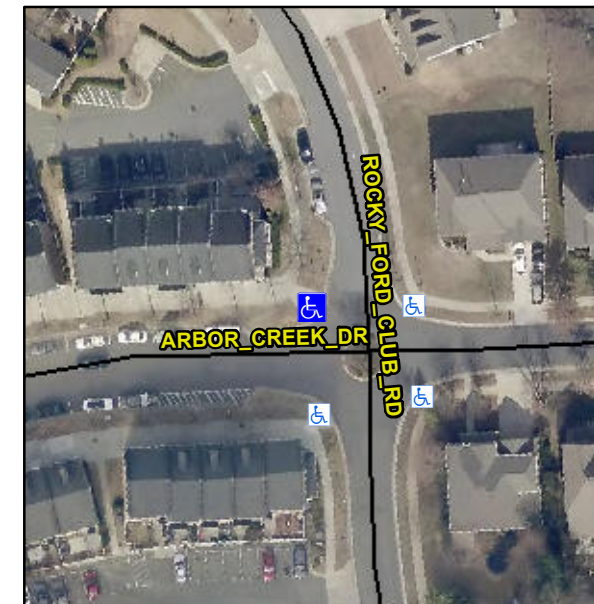
Public Rights-of-Way

(Curb Ramps)

| | | | |
|------------------------|---------------------------------|------------------------------|------------------------|
| Intersection ID: 46147 | Main Street: ROCKY_FORD_CLUB_RD | Cross Street: ARBOR_CREEK_DR | Location: NW |
| ADA ID: C93CB31146C5 | Ramp Type: PerpDiag | Initial Pass/Fail: Fail | Overall Compliance: No |
| | | Severity Score: 12.5 | |

Codes/Mitigation Info/Possible Solution

Field Measurements/Component Compliance



Possible Solutions:

Remove & Replace Curb Ramp With Two New Directional Ramps or Equivalent.

Surveyor Notes:

N/A

PROW/ADA:

N/A

Total Cost:

\$ 3200.00

| Compliance | Description | Data | Compliance | Description | Data |
|------------|-----------------------|-------|------------|-----------------------------|------|
| N/A | Ramp Length (in) | 193.0 | Yes | Ramp Slope (%) | 8.5 |
| Yes | Ramp Width (in) | 48.0 | Yes | Ramp XSlope (%) | 1.1 |
| N/A | Flare Type LT | N/A | N/A | Flare Type RT | N/A |
| N/A | Flare Slope LT (%) | N/A | N/A | Flare Slope RT (%) | N/A |
| N/A | Flare Traversable LT? | N/A | N/A | Flare Traversable RT? | N/A |
| N/A | Landing Length (in) | N/A | N/A | DWS Provided? | N/A |
| N/A | Landing Width (in) | N/A | N/A | DWS Contrast? | N/A |
| N/A | Landing Slope (%) | N/A | N/A | DWS Length (in) | N/A |
| N/A | Landing X Slope (%) | N/A | N/A | DWS Full Width? | N/A |
| N/A | Landing Curb? (Y/N) | N/A | N/A | DWS Offset (in) | N/A |
| N/A | Shared Landing? | N/A | | | |
| N/A | Gutter Ponding? | Yes | N/A | Gutter Slope (%) | N/A |
| N/A | Gutter Lip Ht (in) | N/A | N/A | Gutter X Slope (%) | N/A |
| N/A | Painted X Walk1? | No | N/A | Painted X Walk2? | No |
| | X Walk 1 Direction | To S | | X Walk 2 Direction | To E |
| N/A | X Walk 1 Width (in) | N/A | N/A | X Walk 2 Width (in) | N/A |
| | X Walk 1 Slope (%) | 1.1 | | X Walk 2 Slope (%) | 0.1 |
| | X Walk 1 X Slope (%) | 2.9 | | X Walk 2 X Slope (%) | 1.2 |
| N/A | Ramp inside XWalk1? | N/A | N/A | Ramp inside XWalk2? | N/A |
| | Road Slope (%) | 0.9 | N/A | Clear Space? | N/A |
| | Road X Slope (%) | 3.9 | N/A | Clear Space to XWalk (in) | N/A |
| N/A | Any Obstructions? | N/A | N/A | Storm Grate/Utility Hazard? | N/A |
| | Obstruction Type | | | Storm Grate/Utility Type | |
| | | N/A | | | N/A |
| | | Yes | | Surface Condition? (G/P) | Good |

