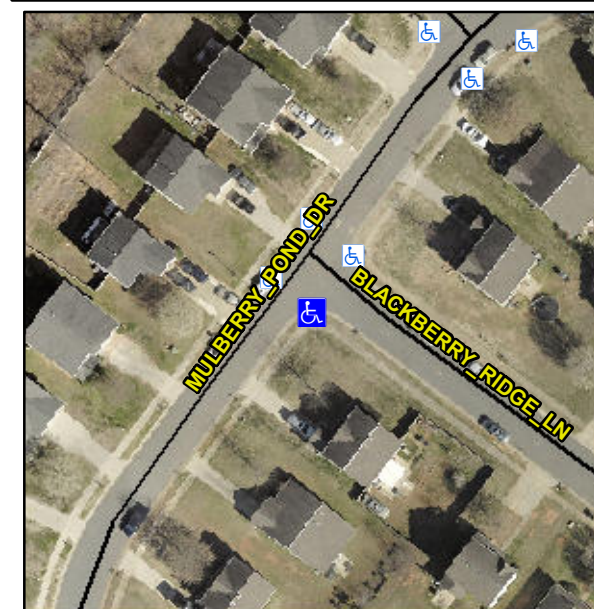


Access Compliance Report

Public Rights-of-Way

(Curb Ramps)

Intersection ID: 43513	Main Street: BLACKBERRY RIDGE LN	Cross Street: MULBERRY POND DR	Location: SW
ADA ID: D6B825D8D638	Ramp Type: PerpDiag	Initial Pass/Fail: Fail	Overall Compliance: No
Severity Score: 10			
Codes/Mitigation Info/Possible Solution		Field Measurements/Component Compliance	



Possible Solutions:

Remove & Replace Curb Ramp With Two New Directional Ramps or Equivalent.

Surveyor Notes:

N/A

PROW/ADA:

Not Found, R304.5.1, R304.5.3

Total Cost: \$ 3200.00

Compliance	Description	Data	Compliance	Description	Data
N/A	Ramp Length (in)	46.0	Yes	Ramp Slope (%)	6.0
No	Ramp Width (in)	40.5	No	Ramp XSlope (%)	3.0
N/A	Flare Type LT	N/A	N/A	Flare Type RT	N/A
N/A	Flare Slope LT (%)	N/A	N/A	Flare Slope RT (%)	N/A
N/A	Flare Traversable LT?	N/A	N/A	Flare Traversable RT?	N/A
N/A	Landing Length (in)	N/A	N/A	DWS Provided?	N/A
N/A	Landing Width (in)	N/A	N/A	DWS Contrast?	N/A
N/A	Landing Slope (%)	N/A	N/A	DWS Length (in)	N/A
N/A	Landing X Slope (%)	N/A	N/A	DWS Full Width?	N/A
N/A	Landing Curb? (Y/N)	N/A	N/A	DWS Offset (in)	N/A
N/A	Shared Landing?	N/A			
N/A	Gutter Ponding?	N/A	N/A	Gutter Slope (%)	N/A
N/A	Gutter Lip Ht (in)	N/A	N/A	Gutter X Slope (%)	N/A
N/A	Painted X Walk1?	No	N/A	Painted X Walk2?	No
	X Walk 1 Direction	To NE		X Walk 2 Direction	To NW
N/A	X Walk 1 Width (in)	N/A	N/A	X Walk 2 Width (in)	N/A
	X Walk 1 Slope (%)	0.4		X Walk 2 Slope (%)	1.7
	X Walk 1 X Slope (%)	0.7		X Walk 2 X Slope (%)	1.3
N/A	Ramp inside XWalk1?	N/A	N/A	Ramp inside XWalk2?	N/A
	Road Slope (%)	1.3	N/A	Clear Space?	N/A
	Road X Slope (%)	1.6	N/A	Clear Space to XWalk (in)	N/A
N/A	Any Obstructions?	N/A	N/A	Storm Grate/Utility Hazard?	N/A
	Obstruction Type			Storm Grate/Utility Type	
		N/A			N/A
			Yes	Surface Condition? (G/P)	Good

Street 1 Name **BLACKBERRY RIDGE LN**
 Stop Condition-Street 2 **StopSign**
 Street 2 Name **MULBERRY POND DR**
 Stop Condition-Street 1 **None**

